



EQUIPMENT SCHEDULE			
MARK	EQUIPMENT	MANUFACTURER	MODEL #
8	CHAR. GRILL W/ STAND (ON CASTERS)	SOUTHBEND	P52N-CC
9	GRIDDLE W/ STAND (ON CASTERS)	WELLS MANUFACTURING	WG-30486
10	35 LB. FRYERS (ON CASTERS)	PITCO FRIALATOR	5614

OWNER IS RESPONSIBLE TO VERIFY ALL EQUIPMENT SPECIFICATIONS & TYPES PRIOR TO PURCHASE AND INSTALLATION. GC TO COORDINATE ALL EQUIPMENT & CONNECTIONS W/ OWNER PRIOR TO PURCHASE & INSTALLATION.

**NOTES:**

- ALL FOOD SERVICE/KITCHEN EQUIPMENT TO BE UL-LABELED, CLASSIFIED FOR SANITATION & MUST COMPLY WITH LOCAL STATE BUILDING CODES.

**GENERAL NOTES**

- EXISTING GAS PIPING TO NOT BEING USED TO BE REMOVED.
- USE EXISTING ROOF PENETRATIONS IF POSSIBLE.

GAS LOAD TABLE	
<b>LOW PRESSURE</b>	<b>HIGH PRESSURE</b>
PRESSURE DROP: 0.5 IN.W.C.	ATMOS. PRESSURE: 14.6954 PSIA
STEEL (SCHD. 40)	Pt. 1 PSIG
LENGTH: 10 FT	STEEL (SCHD. 40)
FITTINGS FACTOR: 1.2	LENGTH: 10 FT
EQUIVALENT TOTAL LENGTH: 152 FT.	FITTINGS FACTOR: 1.2
CAPACITY OF PIPES IN MBH	EQUIVALENT TOTAL LENGTH: 152 FT.
1/2" 45	CAPACITY OF PIPES IN MBH
3/4" 88	1/2" 394
1" 168	3/4" 823
1-1/4" 345	1" 1550
1-1/2" 516	1-1/4" 3165
2" 894	1-1/2" 4785
2-1/2" 1565	
3" 2802	

**NOTE:**  
 GAS PIPING IS SIZED FOR 2PSI. CONTRACTOR SHALL PROVIDE AN ALTERNATE BID FOR LOW PRESSURE PIPING IF HIGH PRESSURE IS NOT AVAILABLE. CONTRACTOR SHALL VERIFY THE AVAILABILITY OF 2PSI SERVICE BEFORE ANY WORK HAS BEGUN AND NOTIFY ARCHITECT IN WRITING OF AVAILABLE SERVICE.

COMBINED GAS LOAD SUMMARY	
8	80 MBH
9	100 MBH
10	110 MBH
10	110 MBH
10	110 MBH
10	110 MBH
GWH-1	198 MBH
GWH-2	198 MBH
GWH-3	198 MBH
KSP-1	206.61 MBH
RTU-1	180 MBH
RTU-2	120 MBH
<b>1615.61 MBH TOTAL</b>	

**CONSTRUCTION NOTES**

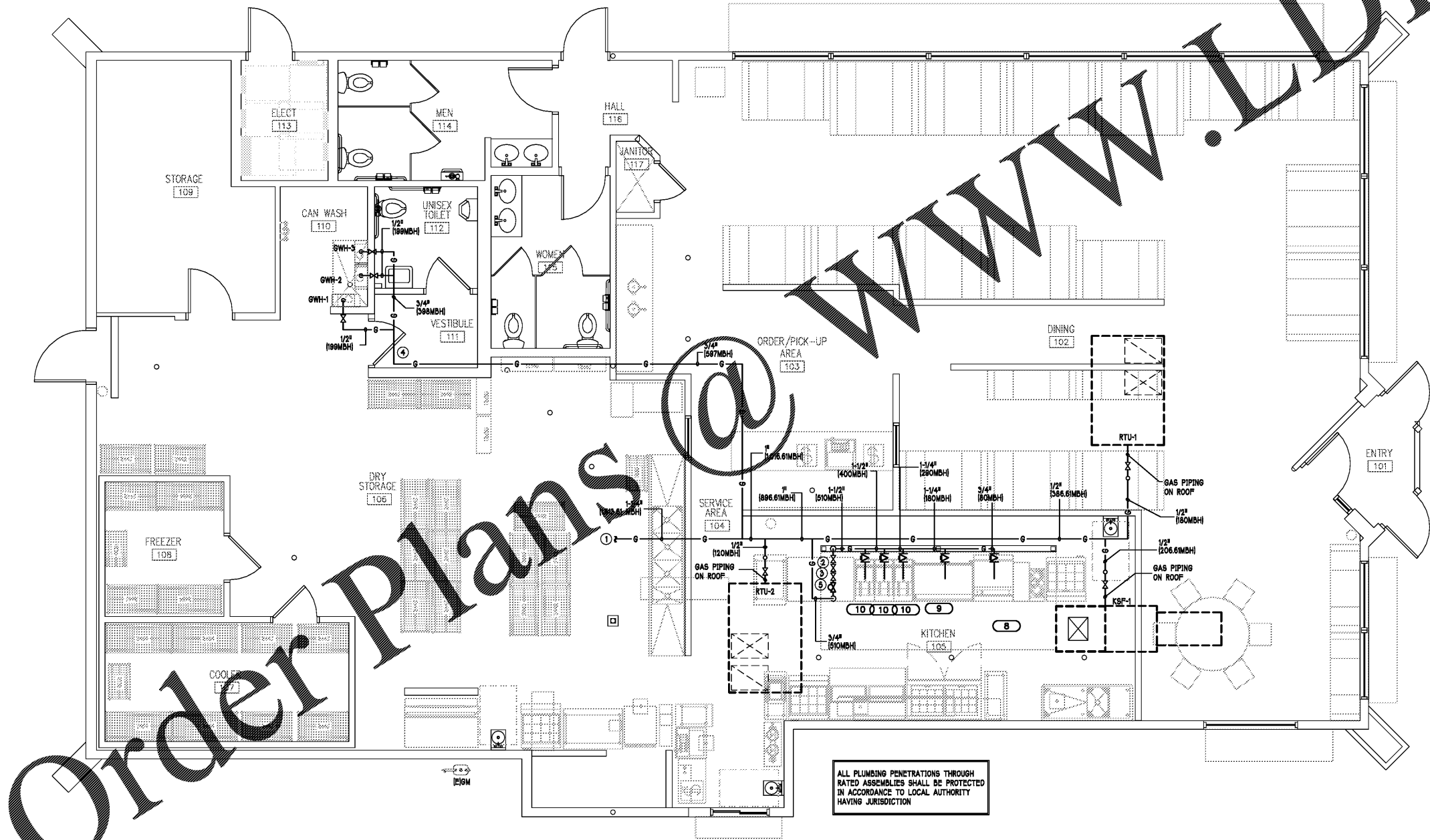
- VERIFY TOTAL DEVELOPED LENGTH OF PIPING AND SERVICE PRESSURE BEFORE STARTING WORK. PIPING IS SIZED FOR 1615.61 MBH AT 2 PSI AT APPROXIMATE TOTAL DEVELOPED LENGTH OF 110 FEET. NOTIFY ENGINEER IF LENGTH TO FURTHEST FIXTURE IS GREATER THAN 10 FT.
- GAS LINE FEEDING GAS COOKING EQUIPMENT UNDER HOOD. PROVIDE EACH PIECE OF GAS FIRED EQUIPMENT WITH A SEPARATE SHUT-OFF AND VENT LIMITING PRESSURE REGULATOR AS REQUIRED.
- PROVIDE SOLENOID VALVE AND INTERLOCK WITH HOOD FIRE SUPPRESSION SYSTEM TO SHUT-OFF GAS SUPPLY UPON ANY ALARM. PROVIDE MANUAL RESET RELAY IN ACCESSIBLE LOCATION. VERIFY LOCATIONS OF GAS STUB-OUTS WITH EQUIPMENT PRIOR TO INSTALLATION.
- GAS LINE TO NEW GAS FIRED WATER HEATERS. PROVIDE A SHUT-OFF AND VENT LIMITING PRESSURE REGULATOR AS REQUIRED.
- NEW GAS PRESSURE REGULATOR AT GAS LINE THAT IS ROUTED UNDER THE HOOD TO REDUCE THE LINE PRESSURE UNDER THE HOOD FROM 2 PSI TO 1/2 PSI.

**NOTE:** GAS PIPING TO BE ROUTED ABOVE THE CEILING.

GAS PIPING LEGEND	
	GAS PIPING
	GAS BALL VALVE
	GAS PRESSURE REGULATOR
	PIPE UP
	PIPE DOWN
	GAS METER (EXISTING)

**NOTES:**

- SUPPORT STEEL PIPE AT MAXIMUM OF 6'-0" O.C. FOR 1/2".
- SUPPORT STEEL PIPE AT MAXIMUM OF 8'-0" O.C. FOR 3/4" & 1".
- SUPPORT STEEL PIPE AT MAXIMUM OF 10'-0" O.C. FOR 1-1/4" & LARGER.
- CONTRACTOR TO VERIFY ALL EXISTING PIPING IS SIZED FOR 2 PSI AND MEETS THE VALUES LISTED BELOW FROM THE IFGC AND NFPA 54 TABLES.



ALL PLUMBING PENETRATIONS THROUGH RATED ASSEMBLIES SHALL BE PROTECTED IN ACCORDANCE TO LOCAL AUTHORITY HAVING JURISDICTION

PROVIDE GAS REGULATOR AT EACH PIECE OF GAS-FIRED EQUIPMENT TO PROVIDE PRESSURE TO UNIT AS REQUIRED BY MANUFACTURER

**1** GAS PIPING PLAN  
 P4 1/4"=1'-0"

Order Plans @