

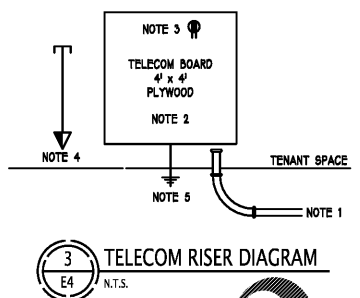
**COOK OUT MACON**  
 155 Tom Hill Sr. Blvd  
 Macon GA 31210

Mk	Date	Description
		Revisions

**ELECTRICAL PANEL SCHEDULE, RISER & DETAILS**

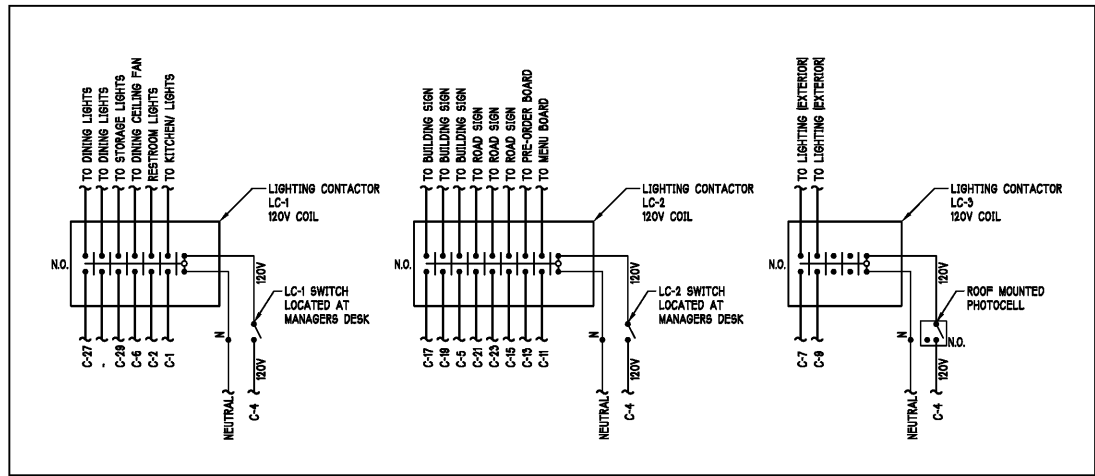
Date: 08-24-17  
 Drawn By: VOA  
 Check By: DRP  
 Job No.: 17-061-000  
 Sheet:

**E4**

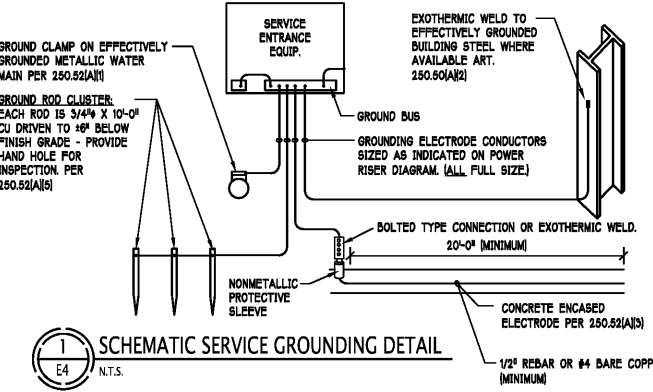


**TELECOM RISER NOTES**

- CONDUIT PROVIDED UNDER LAB CONDITIONS INDICATED BY TELECOM CONSULTANT FIELD ENGINEER.
- 3/4" FINISH GRADE PLYWOOD BOARD PAINTED WITH FLAME RETARDANT PAINT, MOUNT 24" OFF TO BOTTOM OF BOARD.
- DUPLEX RECEPTACLE ON A DEDICATED CIRCUIT FOR TELEPHONE AND OTHER COMMUNICATION EQUIPMENT.
- 3/4" CONDUIT ABOVE ACCESSIBLE CEILING.
- 8# CU GROUND TO SERVICE GROUND BAR WITH ADEQUATE SLACK FOR GROUNDING OF TELECOM EQUIPMENT.



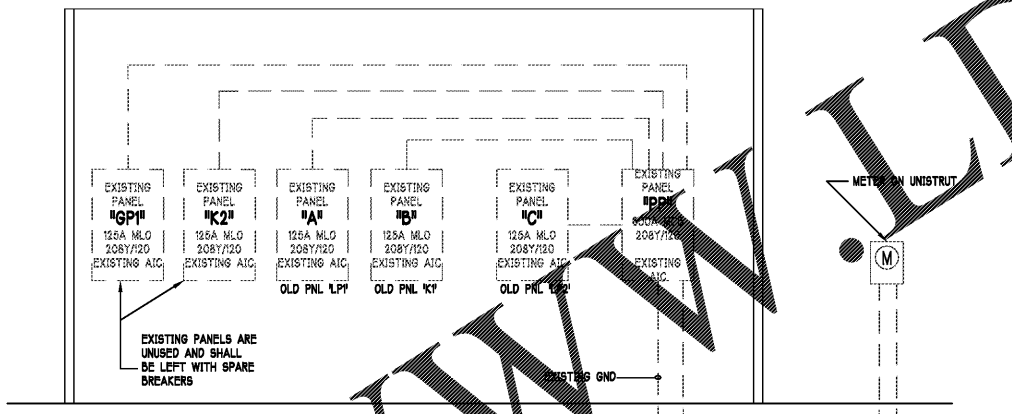
**2 LIGHTING CONTACTOR CONTROL DETAIL**  
 N.T.S.



**GROUNDING DETAIL NOTES**

- GROUNDING ELECTRODES SHALL BE PROVIDED IN ACCORDANCE WITH NEC 250.52(A).
- GROUNDING ELECTRODES SHALL BE INSTALLED IN ACCORDANCE WITH NEC 250.53.
- WITHOUT EXCEPTION, SUPPLEMENTAL GROUNDING ELECTRODES SHALL ALWAYS BE INSTALLED.

NOT ALL ELECTRODES MAY BE PRESENT ON-SITE, THEREFORE NOT ALL ELECTRODES ON THIS SCHEMATIC DIAGRAM MAY APPLY.



**LOAD SUMMARY**

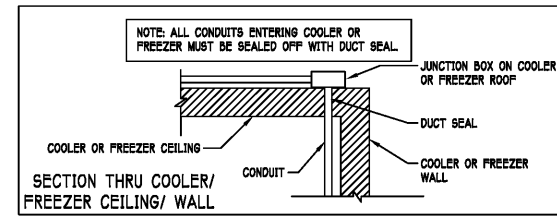
LIGHTS	6.4	20.8
HVAC	33.4	33.4
RECEPT.	6.0	6.0
EQUIP.	72.4	72.4
WTR. HTR.	2.5	3.1
KTT. EQ.	3.7	6.8
<b>TOTAL</b>	<b>160.8</b>	<b>144.8</b>

DEMAND KVA: 144.8  
 DEMAND AMPS: 402.2

EXISTING PANEL: PP		3-PHASE/4-WIRE SURFACE			
- DESCRIPTION -		PHASE	WIRE SIZE	CONDUCTOR	DESCRIPT.
SPARE	4	3	3	8	RTU-1 MCA: 41.5 A MOPP: 50A
SPARE	3	3	11	8	RTU-2 MCA: 48.8A MOPP: 60A
SPARE	3	3	17	18	GREASE HEATER
PANEL A	3	1	125	25	PANEL C
PANEL B	3	1	125	27	EXISTING PANEL
SPARE	1	-	33	3	SPACE
SPARE	1	-	50	3	SPACE
SPARE	1	-	37	3	SPACE
SPARE	1	-	50	3	SPACE
SPARE	1	-	41	3	SPACE

**TOTAL CONNECTED KVA: 146.2**  
**DEMAND KVA: 144.8**  
**DEMAND AMPS: 402.2**

PC/PC - PHOTOCELL ON, PHOTOCELL OFF  
 PC/OFF - PHOTOCELL ON, TIMELOCK OFF  
 SB - PROVIDE SWITCH RATED BREAKER  
 ST - SHUNT TRIP



**4 COOLER/FREEZER PENETRATION DETAIL**  
 N.T.S.

**RISER LEGEND**

- NEW
- - - - - EXISTING

**A/C NOTE:**  
 E.C. SHALL COORDINATE WITH UTILITY COMPANY AND DETERMINE THE MAXIMUM FAULT CURRENT OF THE TRANSFORMER SERVING THIS EQUIPMENT. IF MAXIMUM FAULT CURRENT IS GREATER THAN THE RATINGS OF THE EQUIPMENT SHOWN ON THE PLANS, THE E.C. SHALL CONTACT THE ENGINEER IMMEDIATELY FOR DIRECTION.

**FEEDER SCHEDULE**

STANDARD FUSE OR C/B SIZE	FEEDER WIRE - #SETS (COND. SIZE, EQU. GND, COND. SIZE) CONDUCTOR TYPE: THHN - DRY; THWN - WET			
	COPPER WIRE		ALUMINUM WIRE#	
	SEG	SEG	SEG	SEG
30	1 (4 #10, #10G 3/4"PC)	1 (4 #8, #8G 3/4"PC)		
35	1 (4 #8, #10G 3/4"PC)	1 (4 #6, #6G PC)		
40	1 (4 #6, #10G 3/4"PC)	1 (4 #4, #6G PC)		
45	1 (4 #6, #10G PC)	1 (4 #4, #6G 1-1/4"PC)		
50	1 (4 #6, #10G PC)	1 (4 #4, #6G 1-1/4"PC)		
60	1 (4 #4, #10G 1-1/4"PC)	1 (4 #4, #6G 1-1/4"PC)		
70	1 (4 #4, #6G 1-1/4"PC)	1 (4 #2, #6G 1-1/4"PC)		
80	1 (4 #4, #6G 1-1/4"PC)	1 (4 #1, #6G 1-1/2"PC)		
90	1 (4 #2, #6G 1-1/4"PC)	1 (4 #1/0, #6G 2"PC)		
100	1 (4 #2, #6G 1-1/2"PC)	(#6) 1 (4 #1/0, #6G 2"PC)	(#6)	
110	1 (4 #2, #6G 1-1/2"PC)	(#8) 1 (4 #1/0, #4G 2"PC)	(#2)	
125	1 (4 #1, #6G 1-1/2"PC)	(#6) 1 (4 #2/0, #4G 2"PC)	(#4)	
150	1 (4 #1/0, #6G 2"PC)	(#6) 1 (4 #3/0, #4G 2"PC)	(#4)	
175	1 (4 #2/0, #6G 2"PC)	(#4) 1 (4 #4/0, #4G 2-1/2"PC)	(#2)	
200	1 (4 #3/0, #6G 2"PC)	(#4) 1 (4 #50MCM, #4G 2-1/2"PC)	(#2)	
225	1 (4 #4/0, #4G 2-1/2"PC)	(#2) 1 (4 #50MCM, #2G 3"PC)	(#1/0)	
250	1 (4 #250MCM, #4G 2-1/2"PC)	(#2) 1 (4 #550MCM, #2G 3"PC)	(#1/0)	
300	1 (4 #550MCM, #4G 3"PC)	(#2) 1 (4 #550MCM, #1/0G 3"PC)	(#1/0)	
350	2 (4 #2/0, #6G 2"PC)	(#2) 2 (4 #1/0, #6G 2-1/2"PC)	(#1/0)	
400	2 (4 #3/0, #6G 2"PC)	(#2) 2 (4 #1/0, #6G 2-1/2"PC)	(#1/0)	
450	2 (4 #4/0, #6G 2-1/2"PC)	(#1/0) 2 (4 #50MCM, #2G 3"PC)	(#3/0)	
500	2 (4 #250MCM, #2G 2-1/2"PC)	(#1/0) 2 (4 #550MCM, #1/0G 3"PC)	(#3/0)	
600	1 (4 #550MCM, #1G 3"PC)	(#1/0) 2 (4 #500MCM, #2/0G 3"PC)	(#4/0)	

**FEEDER SCHEDULE NOTES**

- FEEDER SIZES LISTED MAY NOT BE USED IN PROJECT RISER DIAGRAM.
- ELECTRICAL CONTRACTOR TO VERIFY CONDUIT SIZE REQUIRED IF WIRE TYPES OTHER THAN THHN ARE LISTED ABOVE AND USED. REFER TO APPLICABLE VERSION OF THE N.E.C.
- CONDUIT OTHER THAN EMT IS REQUIRED BASE BID ON NEXT TRADE SIZE ABOVE THAT IS LISTED.
- SEE NOTES SERVICE ENTRANCE GROUND.

\* E.C. SHALL VERIFY WITH THE AUTHORITY HAVING JURISDICTION AND THE UTILITY COMPANY THAT ALUMINUM CONDUCTORS ARE ACCEPTABLE FOR USE AS TRANSFORMER SECONDARIES AND FEEDER CIRCUITS.

**EXISTING PANEL: B**

- DESCRIPTION -		PHASE	WIRE SIZE	CONDUCTOR	DESCRIPT.
ST KP-1 FLA: 6.2A	3	12	20	3	TEA BREWER
SHUNT TRIP	1	-	-	7	TEA BREWER
ST KP-2 FLA: 9.5A	3	12	20	11	TEA BREWER
SHUNT TRIP	1	-	-	31	HEAT TRACE
ST ST	1	12	20	18	MILKSHAKE MACHINE RIGHT
SHUNT TRIP	1	-	-	17	SPARE
ST ST	1	12	20	18	MILKSHAKE MACHINE LEFT
SHUNT TRIP	1	-	-	33	SPARE
ST ST	1	12	20	37	DRINK MIXER
SHUNT TRIP	1	-	-	37	DRINK MIXER
ST ST	1	12	20	38	QUESADILLA GRILL
SHUNT TRIP	1	-	-	37	SPARE
ST ST	1	12	20	41	MONITOR
SHUNT TRIP	1	-	-	41	SPARE

**TOTAL CONNECTED KVA: 41.2**  
**DEMAND KVA: 36.3**  
**DEMAND AMPS: 100.8**

**EXISTING PANEL: C**

- DESCRIPTION -		PHASE	WIRE SIZE	CONDUCTOR	DESCRIPT.
ST KP-1 FLA: 6.2A	3	12	20	3	BUN WARMER
SHUNT TRIP	1	-	-	7	TEA BREWER
ST KP-2 FLA: 9.5A	3	12	20	11	TEA BREWER
SHUNT TRIP	1	-	-	31	HEAT TRACE
ST ST	1	12	20	18	MILKSHAKE MACHINE RIGHT
SHUNT TRIP	1	-	-	17	SPARE
ST ST	1	12	20	18	MILKSHAKE MACHINE LEFT
SHUNT TRIP	1	-	-	33	SPARE
ST ST	1	12	20	37	DRINK MIXER
SHUNT TRIP	1	-	-	37	DRINK MIXER
ST ST	1	12	20	38	QUESADILLA GRILL
SHUNT TRIP	1	-	-	37	SPARE
ST ST	1	12	20	41	MONITOR
SHUNT TRIP	1	-	-	41	SPARE

**TOTAL CONNECTED KVA: 36.8**  
**DEMAND KVA: 38.7**  
**DEMAND AMPS: 107.5**

PC/PC - PHOTOCELL ON, PHOTOCELL OFF  
 PC/OFF - PHOTOCELL ON, TIMELOCK OFF  
 SB - PROVIDE SWITCH RATED BREAKER  
 ST - SHUNT TRIP