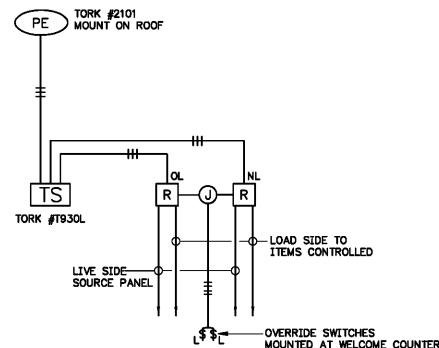


DATE PLOTTED: SEPTEMBER 21, 2017 PLOTTED BY: STEVE AT 09:22
 V:\7086002\DWG\09-21-17 AT 09:09 - STEVE SHEET SIZE: 24.0x36.0 SCALE: 1/2"=1'
 V:\7086002\DWG\09-21-17 AT 09:22 - STEVE SHEET SIZE: 24.0x36.0 SCALE: 1/2"=1'
 © COPYRIGHT LAMRENCE L. CORLEY, THESE DRAWINGS & FILES ARE INSTRUMENTS OF SERVICE, ARE, AND SHALL REMAIN THE SOLE PROPERTY OF THE ARCHITECT. THEY ARE NOT TO BE REPRODUCED IN ANY FORM WITHOUT WRITTEN CONSENT OF THE ARCHITECT.

LUMINAIRE NOTES

- LAMP TYPES AND DESCRIPTION
 - FLUORESCENT: T-8, 48" RAPID START, 3500 DEGREES K, 80 CRI.
 - INCANDESCENT: MEDIUM BASE, A19.
 - METAL HALIDE: BT-28, MODUL BASE 3200 DEGREE K, COATED.
 - FLUORESCENT: PL LAMP, 3200 DEGREE K.
 - FLUORESCENT: T-5, 3500 DEGREE K.
 - INCANDESCENT: CANDELABRA BASE, CA10.
 - INCANDESCENT: QUARTZ/HALOGEN, T4 MINI-CAN., FROSTED.
 - INCANDESCENT: MEDIUM BASE, PAR 38, FLOOD.
 - INCANDESCENT: MEDIUM BASE, R20, FLOOD.
 - FLUORESCENT: T-8, U-BENT RAPID START, 3500 DEGREE K., 80 CRI.
 - FLUORESCENT: QUAD, 4 PIN, 3500 DEGREE K., 80 CRI, GX24-Q3.
 - FLUORESCENT: TWIN TUBE, 3500 DEGREE K., 80 CRI, GX23.
 - METAL HALIDE: ED-17 MEDIUM BASE, COATED, 3200 DEGREE K., OPEN REFLECTOR RATED.
 - FLUORESCENT: T-8 - 38" RAPID START, 3500 DEGREE K, 80 CRI.
 - FLUORESCENT: T-12 BI-PIN, 48" LENGTH, BLACK LIGHT.
 - INCANDESCENT: MEDIUM PRONG BASE, QUARTZ/HALOGEN, PAR 56, WIDE FLOOD.
 - LED: MULTI-LAMP ENGINE, 3500 DEGREES KELVIN.
- FURNISH PROPER LAMP FOR REFLECTOR ASSEMBLY SPECIFIED AS RECOMMENDED BY LUMINAIRE MANUFACTURER.
- FLUORESCENT AND H.I.D. BALLASTS SHALL BE FUSED WITH APPROVED DUAL ELEMENT FUSE.
- CONTRACTOR SHALL VERIFY EXACT TYPE CEILING BEING FURNISHED AND SUPPLY BASIC LUMINAIRES SPECIFIED IN APPROPRIATE CONFIGURATION FOR CEILING TO BE FURNISHED.
- FURNISH FLUORESCENT LUMINAIRES WITH JOINING PLATES, END CAPS, CANOPIES, MOUNTING HARDWARE, ETC. AS REQUIRED FOR COMPLETE INSTALLATION.
- LUMINAIRE MOUNTING AND SUSPENSION SHALL BE AS APPROVED BY ENGINEER AND NO COMBUSTIBLE MATERIALS SHALL BE USED.
- EXIT LIGHTS SHALL BE TWO CIRCUIT EXCEPT STANDBY BATTERY TYPE ONE CIRCUIT, VERIFY EXACT COLOR REQUIRED WITH LOCAL AUTHORITY AND FURNISH AS REQUIRED. FURNISH DIRECTIONAL ARROWS AS INDICATED.
- PROVIDE DEVICES FOR SECURING LUMINAIRE TO CEILING GRID TO COMPLY WITH ARTICLE 410-19C OF THE 1993 NATIONAL ELECTRICAL CODE FOR ALL LAY-IN TYPE LUMINAIRES. BENT TAP TYPE NOT ACCEPTABLE.
- LIFE SAFETY EMERGENCY LIGHTING SHALL BE PROVIDED WITH FLUORESCENT EMERGENCY BATTERY BALLAST UNIT CAPABLE OF POWERING ONE LAMP, FULL OUTPUT FOR 90 MINUTES. ACCEPTABLE MANUFACTURER: BODINE NO. B30
- CONTRACTOR SHALL PROVIDE ALL MOUNTING HARDWARE, BRACKETS AND CONNECTORS REQUIRED FOR COMPLETE LAMPER INSTALLATION.



WIRING DIAGRAM
OUTSIDE LIGHTING
NO SCALE

LUMINAIRE SCHEDULE

MARK	LAMP QTY / WATTAGE / TYPE	DESCRIPTION	MARK	LAMP QTY / WATTAGE / TYPE	DESCRIPTION
PLA	2 / 320 / c	PARKING LOT LIGHTING STANDARD, TWIN SHOE BOX LUMINAIRE WITH TYPE III DISTRIBUTION, MOUNTED ATOP 30" DIA ALUMINUM POLE, DARK BRONZE FINISH, 208V.	BA	1 / 65 / b	SURFACE WALL MOUNTED INCANDESCENT FIXTURE GLASS GLOBE, DIE CAST ALUMINUM GUARD, CAST WALL MOUNTING WITH JUNCTION BOX, ENCLOSED AND GASKETED, MOUNT ABOVE DOOR, PROVIDE BLACK CONE WHERE NOTED, 120V.; RAL NO. VP W8100 GG 75B
PTA	1 / 175 / c	LUMINAIRE - LITHONIA NO. KSF2-320M-R3-208-SP04-DF-CR POLE - LITHONIA NO. SSA 25 50 SBOS HHC DM19	DA	1 / 100 / b	RECESSED QUARTZ DOWN LIGHT, 6" DIAMETER CLEAR CONE, WIDE DISTRIBUTION, SLOPE CEILING ADAPTER, 120V.; PRESCOLITE NO. INC 6250 T4 FL ST6 T4/6 TRG WT SCABD
RH	AS FURNISHED	POST TOP MOUNTED METAL HALIDE LANTERN STYLE, ACRYLIC LENS, TYPE III DISTRIBUTION, CAST ALUMINUM HOUSING, 3" TENON, BLACK FINISH, STRAIGHT ROUND 1 1/2" POLE WITH DECORATIVE BASE, 120V.	DB	1 / 400 / g	RECESSED QUARTZ DOWN LIGHT, 6" DIAMETER CLEAR CONE, MEDIUM DISTRIBUTION, SLOPE CEILING ADAPTER, 120V.; PRESCOLITE NO. INC 8400 T4 MD STB T4/6 TRG WT SCABO
SHA	2 / 42 / k	LUMINAIRE - COOPER NO. TRD 175M MH 120 3F BZ POLE - COOPER NO. WA3 14-5-2-RS-5-BZ	EM	AS FURNISHED	PENDANT MOUNTED EMERGENCY LIGHT, SELF-CONTAINED BATTERY UNIT, LITHONIA NO. INDX 1254 H2012S SEL ELA INDX CM2
SHB	1 / 100 / m	REMOTE EMERGENCY HEAD, WALL MOUNT. DUAL-LITE NO. EXT-050625	FA	2 / 32 / a	SURFACE MOUNTED FLUORESCENT STRIP, 4' LENGTH, WIRE GUARD, PROVIDE SELF-CONTAINED EMERGENCY BATTERY PACK WHERE 'E' IS NOTED NEXT TO LUMINAIRE SYMBOL ON PLANS, 120V.; COLUMBIA NO. CS4-232-EBLH 120-GMF-120-GMF LITHONIA NO. C232 120 GEB10 GMF WILLIAMS NO. 78-4-2320C-GMF-(1)-E2320C-120
TA	- / 250 / h	SURFACE MOUNTED METAL HALIDE LIGHT, 13" DIAMETER, WHITE FINISH, CAST METAL HOUSING, SIDE CONDUIT ENTRY, 120V.; LITHONIA NO. VGRIC 100M 120 DWHG SF QRS	FB	2 / 32 / a	SURFACE MOUNTED FLUORESCENT STRIP, 4' LENGTH, ACRYLIC LENS, WHITE END CAPS, PROVIDE SELF-CONTAINED EMERGENCY BATTERY PACK WHERE 'E' IS NOTED NEXT TO LUMINAIRE SYMBOL ON PLANS, 120V.; LITHONIA NO. ZVC-252-120-GEB10
UC	1 / 25 / n	SURFACE MOUNTED INCANDESCENT TRACK, 2 CIRCUIT, ADJUSTABLE HEAD, WHITE FINISH FOR LAY-IN CEILING, BLACK FINISH IN YOUTH ASSEMBLY, PROVIDE VARYING PENDANT LENGTH, 120V.; LITHONIA NO. L218-RNDB-P1	FC	1 / 25 / n	SURFACE MOUNTED FLUORESCENT STRIP, 4' LENGTH, WIRE GUARD, MOUNT ABOVE DOOR, 120V.; LITHONIA NO. C12-120 GEB10 GMF WGLUN WST
WA	1 / 32 / k	SURFACE MOUNTED FLUORESCENT UNDER CABINET LIGHT, 36" LENGTH, WHITE ACRYLIC LENS, WHITE METAL HOUSING, 120V.; LITHONIA NO. UC8 25 120 DUC836	FDA	2 / 42 / k	RECESSED FLUORESCENT DOWN LIGHT, 9" DIAMETER APERTURE, U.L. DAMP LOCATION, PROVIDE SELF-CONTAINED EMERGENCY BATTERY PACK WHERE 'E' IS NOTED NEXT TO LUMINAIRE MARK, PROVIDE SLOPE CEILING ADAPTER, 120V.; PRESCOLITE NO. CFT-942-HEB-STF902H-WT-B24
WB	1 / 32 / k	DURIMABLE, 120V.; PROVIDE ALLOWANCE OF \$350.00 PER LUMINAIRE.	FDB	1 / 70 / k	RECESSED FLUORESCENT DOWN LIGHT, 6" DIAMETER APERTURE, PROVIDE SELF-CONTAINED EMERGENCY BATTERY PACK WHERE 'E' IS NOTED NEXT TO LUMINAIRE MARK, 120V.; PRESCOLITE NO. CFT-632-EB-STF602
WFA	1 / 42 / k	WALL MOUNTED FLUORESCENT VANITY LIGHT, MOUNT AT 6"-10" AFF, 120V.; PROVIDE ALLOWANCE OF \$400.00 PER LUMINAIRE.	FDC	1 / 70 / k	RECESSED FLUORESCENT DOWN LIGHT, OPEN 10" DIAMETER REFLECTOR, NARROW DISTRIBUTION, CLEAR SEMI-SPECULAR CONE, WHITE FLANGE, PROVIDE SELF-CONTAINED EMERGENCY BATTERY PACK WHERE 'E' IS NOTED NEXT TO LUMINAIRE MARK, 120V.; OMEGA NO. OM10 70PLT ND-CSS-FF-EM-FZ120-120
WFB	2 / 42 / k	SURFACE MOUNTED INCANDESCENT PERIOD STYLE WALL SCONCE, 12" X 32", CLEAR PANELS, CAST ALUMINUM, SCROLL ARM, BLACK FINISH, MOUNT 6"-8" AFF, 120V.; PROGRESS LIGHTING NO. PS673-108 (BLACK FINISH)	FDD	1 / 32 / d	RECESSED FLUORESCENT DOWN LIGHT, 4" DIAMETER APERTURE, PROVIDE SELF-CONTAINED EMERGENCY BATTERY PACK WHERE 'E' IS NOTED NEXT TO LUMINAIRE MARK, 120V.; LITHONIA NO.
WFC	1 / 42 / k	SURFACE MOUNTED FLUORESCENT WALL BRACKET, HALF ROUND SHAPE, 18" X 7" X 9"D., UP AND DOWN LIGHT, EMERGENCY BATTERY BACK-UP WHERE 'E' IS NOTED NEXT TO LUMINAIRE MARK, U.L. WET LABEL, 120V.; LITHONIA NO. WSR 2/42TRT MDUS 120 DTL 2ELED GMF WLU WST	FDE	2 / 32 / a	RECESSED FLUORESCENT DOWN LIGHT, 9" DIAMETER APERTURE, U.L. DAMP LOCATION, PROVIDE SELF-CONTAINED EMERGENCY BATTERY PACK WHERE 'E' IS NOTED NEXT TO LUMINAIRE MARK, 120V.; PRESCOLITE NO. CFT-932-HEB-STF902H-WT-B24
WHA	1 / 320 / c	SURFACE MOUNTED METAL HALIDE SECURITY LIGHT, 18" X 9" X 14" DIE-CAST HOUSING, 18" MOUNTING HEIGHT, BRONZE FINISH, 120V.; LITHONIA NO. WSM 42 TRT MD 120 GMF S8ST	FTA	2 / 32 / a	RECESSED FLUORESCENT LENSED TROFFER, 2 X 4 LAY-IN, STATIC FLUSH STEEL DOOR WITH 0.125" ACRYLIC LENS, PROVIDE SELF-CONTAINED EMERGENCY BATTERY PACK WHERE 'E' IS NOTED NEXT TO LUMINAIRE MARK ON PLANS, 120V.; COLUMBIA NO. 5PS24-232G-FSA12.125-EBLH120-GMF LITHONIA NO. 2SPG 232 A12125 120 GEB10 GMF WILLIAMS NO. 506-524-2320C-SWKA125-GMF-(1)-E2320C-120
WSA	1 / 70 / m	IN GROUND UP LIGHT, ADJUSTABLE LAMP, ALUMINUM CONSTRUCTION, U.L. WET LABEL, DAMP LOCATION, BRONZE FINISH, 120V.; LUMIERE NO. 3000 A RD MIP2000 FL NSL 120 BZ TRL	FFB	3 / 32 / a	RECESSED FLUORESCENT LENSED TROFFER, 2 X 4 LAY-IN, STATIC FLUSH STEEL DOOR WITH 0.125" ACRYLIC LENS, PROVIDE SELF-CONTAINED EMERGENCY BATTERY PACK WHERE 'E' IS NOTED NEXT TO LUMINAIRE MARK ON PLANS, 120V.; COLUMBIA NO. 5PS24-232G-FSA12.125-EBLH120-GMF LITHONIA NO. 2SPG 232 A12125 120 GEB10X2 GMF WILLIAMS NO. 506-524-2320C-SWKA125-GMF-(2)-E2320C-120
XC	AS FURNISHED	CEILING MOUNTED EXIT SIGN, STENCIL FACE, LED LAMPS, CAST ALUMINUM, PROVIDE SELF-CONTAINED EMERGENCY BATTERY BACK-UP, 120V.; DUAL-LITE NO. SESR WEI	FTC	4 / 32 / a	RECESSED FLUORESCENT LENSED TROFFER, 2 X 4 LAY-IN, STATIC FLUSH STEEL DOOR WITH 0.125" ACRYLIC LENS, PROVIDE SELF-CONTAINED EMERGENCY BATTERY PACK WHERE 'E' IS NOTED NEXT TO LUMINAIRE MARK ON PLANS, 120V.; COLUMBIA NO. 5PS24-432G-FSA12.125-EBLH120-GMF LITHONIA NO. 2SPG 432 A12125 120 GEB10X2 GMF WILLIAMS NO. 506-524-4320C-SWKA125-GMF-(2)-E2320C-120
XBD	AS FURNISHED	CEILING MOUNTED LED EXIT SIGN, DOUBLE FACE, SELF-CONTAINED BATTERY UNIT, 120V.; DUAL-LITE NO. SCDR WEI	FTD	3 / 32 / a	RECESSED FLUORESCENT LENSED AND GASKETED TROFFER, 2 X 4 LAY-IN, STATIC FLUSH STEEL DOOR WITH 0.125" ACRYLIC LENS, PROVIDE SELF-CONTAINED EMERGENCY BATTERY PACK WHERE 'E' IS NOTED NEXT TO LUMINAIRE MARK ON PLANS, 120V.; COLUMBIA NO. WT 24 332 G FA A12.125 3E U GMF LITHONIA NO. 2WRT G 332 A12125 120 GEB10 GMF
XW	AS FURNISHED	SURFACE WALL MOUNTED LED EXIT SIGN, SINGLE FACE, RED, EMERGENCY BATTERY BACK-UP, 120V.; DUAL-LITE NO. SESR WEI	FTE	2 / 31 / j	RECESSED FLUORESCENT LENSED TROFFER, 2 X 2 LAY-IN, STATIC FLUSH DOOR WITH 0.125" ACRYLIC LENS, PROVIDE SELF-CONTAINED EMERGENCY BATTERY PACK WHERE 'E' IS NOTED NEXT TO LUMINAIRE MAR ON PLANS, 120V.; LITHONIA NO.
XWN	AS FURNISHED	SURFACE WALL MOUNTED LED EXIT SIGN WITH DUAL HEADS, SINGLE FACE, RED, EMERGENCY BATTERY BACK-UP, 120V.; DUAL-LITE NO. HCX U RW-03L-RC12	HA	1 / 42 / k	RECESSED FLUORESCENT LENSED DOWN LIGHT, 6" DIAMETER, REGRESSED ACRYLIC LENS, U.L. WET LABEL, 120V.; GOTHAM NO. LGFLP 1/42TRT 6DFR 120 GMF
			PA	1 / 50 / l	PENDANT MOUNTED INCANDESCENT, GLASS SHADE, CORD PENDANT, 120V.; PROVIDE ALLOWANCE OF \$375.00 PER LUMINAIRE
			PB	1 / 250 / g	PENDANT MOUNTED QUARTZ CYLINDER, 6" DIAMETER, 16" L. CYLINDER, BLACK FINISH, 120V.; PRESCOLITE NO. T4C8P 250 MCR BL
			PC	- / - / -	DECORATIVE PENDANT LIGHT, PROVIDE ALLOWANCE OF \$1,500.00 PER LUMINAIRE EXCLUDING LABOR TO INSTALL

SET
Staub Engineering Inc.
2524 Valleydale Road,
Birmingham, Alabama 35244
Ph 205-981-8300 Fax 205-981-8397
Email: staub@staubeng.com



Corley Timothy Sweeney McCormac
ARCHITECTS, INC.
THREE RIVERCHASE OFFICE PLAZA / SUITE 024 / HOOPER, ALABAMA 35244
T 205.443.3720 F 205.443.3790 W csmarchitects.com

LUMINAIRE SCHEDULE & NOTES
08-30-17
1904
ALABAMA

FIRST BAPTIST CHURCH
CHILDREN'S ADDITION
HAYDEN,
REVISED:

Order Plans @