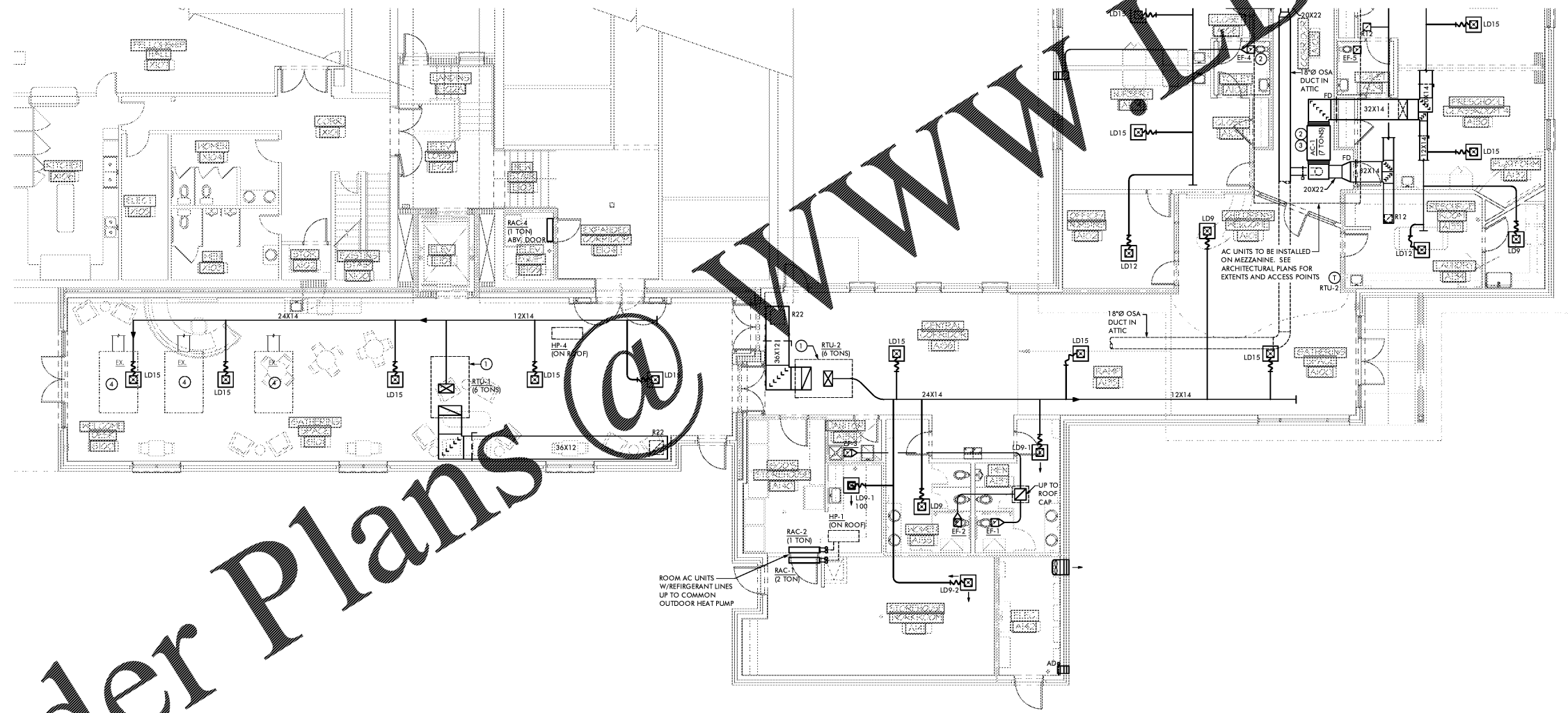


30 AUG 2017 10:43:17 AM C:\projects\1904-FBC-Hayden\1904-SD_A020-A120 Phase One.dwg PLOTED BY: mgriffin

Order Plans

WWW.DILine.com



PARTIAL FLOOR PLAN - HVAC NEW WORK

SCALE: 1/8" = 1'-0"

HVAC PLAN NOTES (THIS PLAN ONLY):

- 1 ROOFTOP AC UNIT W/ELECTRIC COOLING GAS HEAT AND ROOF CURB.
- 2 CEILING MOUNTED EXHAUST FAN. DUCT EXHAUST TO 8X8 BRICK VENT.
- 3 HORIZONTAL GAS FURNACE W/DX COOLING COIL MOUNTED ON MEZZANINE.
- 4 EXISTING PACKAGED AC UNIT TO BE RELOCATED FROM GROUND TO NEW ROOF. VERIFY OPERATION BEFORE AND AFTER RELOCATION. EXTEND DUCT AS REQUIRED TO MAKE NEW CONNECTION.



WHITAKER & RAWSON, LLC
 3333 Old Montgomery Hwy
 Suite 103 Mark Harris Bldg
 Birmingham, AL 35209
 www.whitakerandrawson.com
 Mechanical: Doug Rawson
 Direct Line: (205) 949-5118
 Plumbing: Erik Harwig
 Direct Line: (205) 949-5107
 W&R PROJECT NUMBER: 17180

FIRST BAPTIST CHURCH

PARTIAL FLOOR PLAN
 HVAC NEW WORK

01-08-17

1904-030

ALABAMA

HAYDEN,

M200A

Corley Timothy Sweeney McCormac
 C T S M A R C H I T E C T S I N C
 THREE RIVERCHASE OFFICE PLAZA / SUITE 124 / HOOPER, ALABAMA 35244
 T 205-443-3720 F 205-443-3720 W ctstmrchitects.com