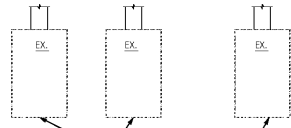
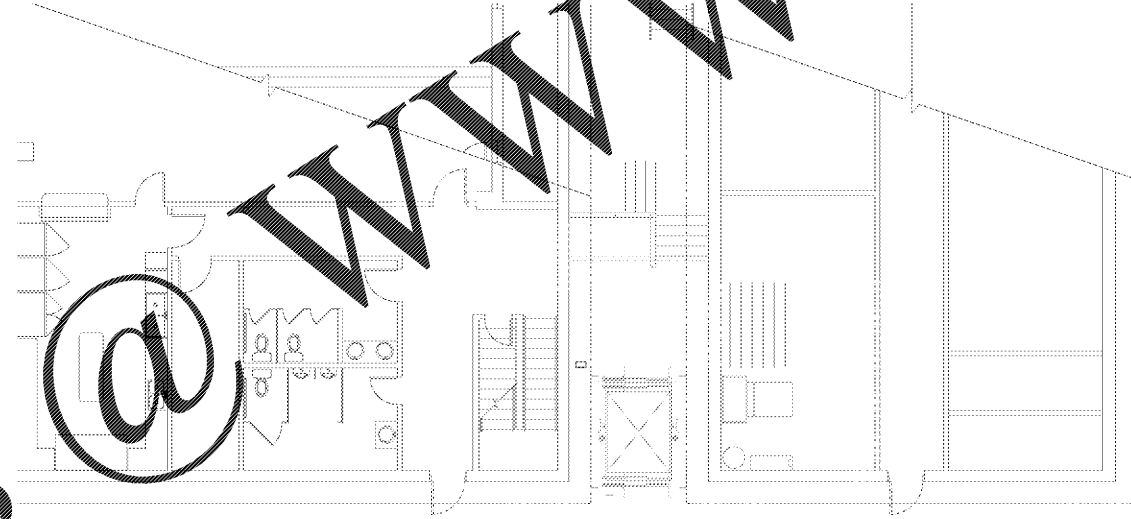


30 AUG 2017 3:00 PM [BY: mgriffin] [PLOT] [PROJECT: D:\projects\1904 FBC Hayden\1904-SD\_A020-A120 Phase One.dwg] [SCALE: 1/8" = 1'-0"] [DATE: 08/30/17] [TIME: 15:00:00] [USER: mgriffin] [HOST: PLOT01]

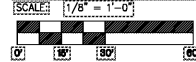
# Order Plans



RELOCATE EXISTING  
MECHANICAL UNITS.  
EXTEND DUCT AS  
REQUIRED. VERIFY  
OPERATION BEFORE &  
AFTER RELOCATION.



**PARTIAL FLOOR PLAN - HVAC DEMOLITION**



WWW.LDILine.com



**WHITAKER & RAWSON, LLC**  
3333 Old Montgomery Hwy  
Suite 103 Mark Harris Bldg  
Birmingham, AL 35209  
www.whitakerandrawson.com  
Mechanical: Doug Rawson  
Direct Line: (205) 949-5118  
Plumbing: Erik Hartwig  
Direct Line: (205) 949-5107  
W&R PROJECT NUMBER: 17180

**M100**

**FIRST BAPTIST CHURCH**

REVISED:

ALABAMA

01-08-17  
1904-030

**PARTIAL FLOOR PLAN  
HVAC DEMOLITION**

**Corley Timothy Sweeney McCormac**  
**CTSM ARCHITECTS, INC.**  
THREE RIVERCHASE OFFICE PLAZA / SUITE 124 / HOOVER, ALABAMA 35244  
T 205-443-3720 F 205-443-3790 W ctsmarchitects.com

