

PLOTTED BY: jmcormac 18 SEP 2017 1:04:50 PM PROJECT: \projects\1904-FBC-Hayden\1904-SDV-A610.dwg
 C:\PROGRAMS\2016_CAD\ARCHITECTURE\FILES\ASSEMBLY\DOOR_SCHEDULE\DOOR_SCHEDULE.dwg
 09-29-17 1904 ALABAMA

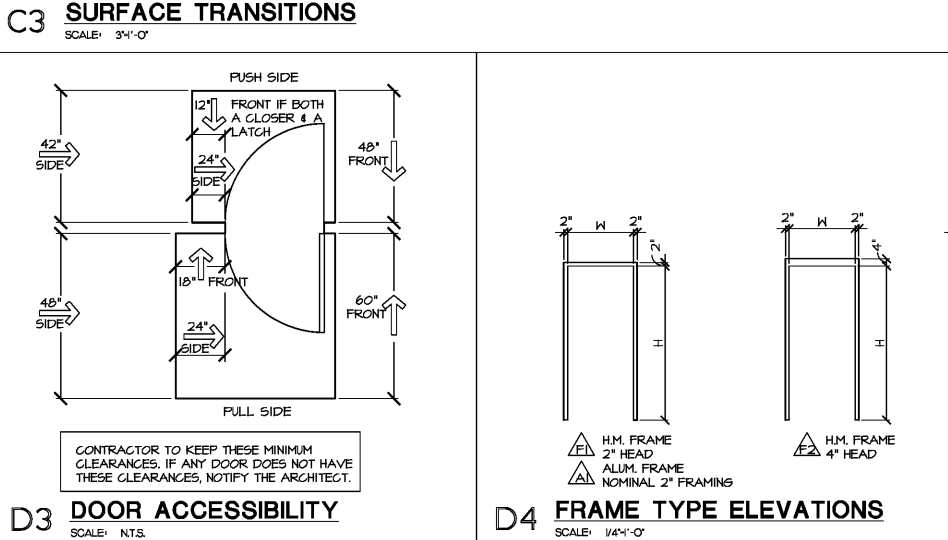
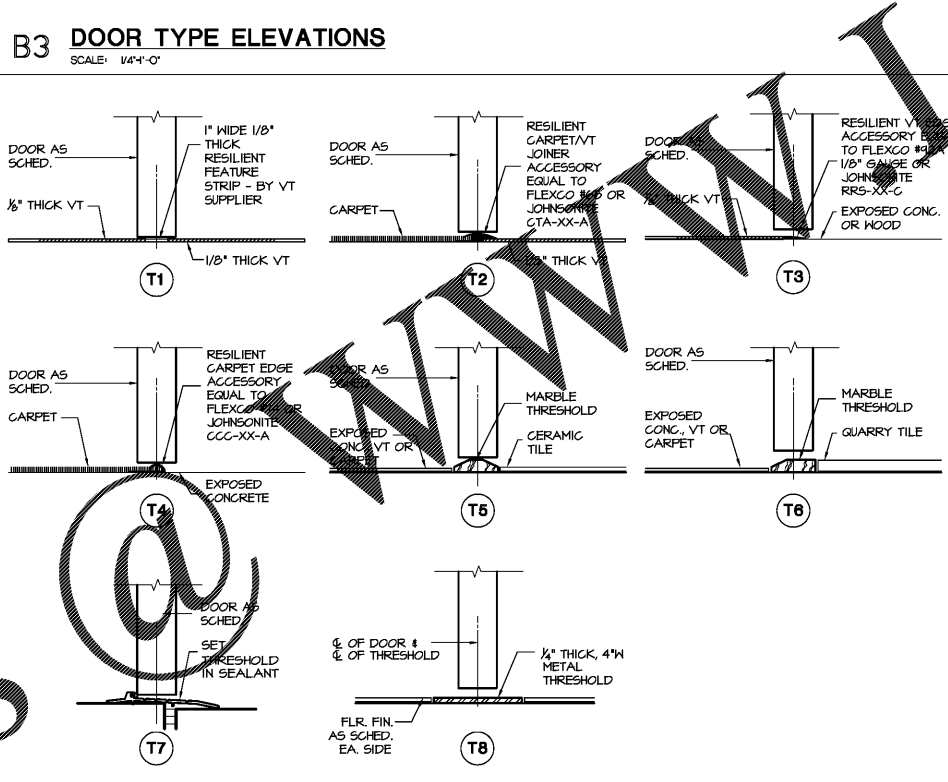
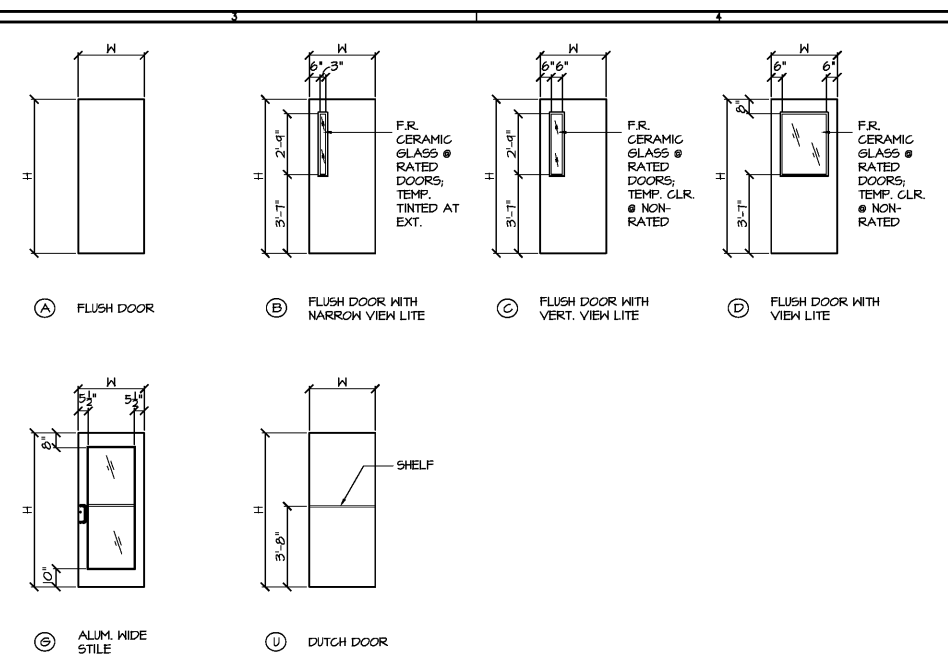
DOOR SCHEDULE LEGEND

SYMBOL	FIELD	DEFINITION
101	ROOM NUMBER	NUMBER OF ROOM WHERE DOOR OCCURS; REFER TO 1/8" SCALE PLANS
A	MARK	DOOR LETTER; REFER TO 1/8" SCALE PLANS; DOOR NUMBER CORRESPONDS TO ROOM NUMBER THAT THE DOOR SYMBOL IS LOCATED WITHIN
A	TYPE	FLUSH DOOR
B	TYPE	FLUSH DOOR W/ 3" x 33" VIEW LITE IN METAL FRAME; BOTTOM OF LITE 43" A.F.F.
C	TYPE	FLUSH DOOR W/ 6" x 33" VIEW LITE IN METAL FRAME; BOTTOM OF LITE 43" A.F.F.
D	TYPE	FLUSH DOOR W/ 33" VIEW LITE 6" IN FROM EACH DOOR EDGE IN METAL FRAME; BOTTOM OF LITE 43" A.F.F.; 8" TOP RAIL
E	TYPE	FLUSH DOOR W/ VIEW LITE 6" IN FROM EACH DOOR EDGE IN METAL FRAME; BOTTOM OF LITE 12" A.F.F. CROSS STILE LOCATED BETWEEN 36" & 43" A.F.F.; 8" TOP RAIL TRUE DIVIDED LITE MUNTINS WHERE SHOWN
F	TYPE	FLUSH DOOR W/ FULL HT. VIEW LITE 6" IN FROM EACH DOOR EDGE IN METAL FRAME; BOTTOM OF LITE 12" A.F.F.; 8" TOP RAIL, TRUE DIVIDED LITE MUNTINS WHERE SHOWN
G	TYPE	ALUMINUM STOREFRONT ENTRANCE DOOR W/ 10" BOTTOM RAIL AND 8" TOP RAIL, SIDE STILES 5" BOTTOM RAIL, 8" CROSS RAIL AND 5" TOP RAIL, SIDE STILES 3 1/2"
H	TYPE	ALUMINUM STOREFRONT ENTRANCE DOOR W/ 10" BOTTOM RAIL, 8" CROSS RAIL AND 5" TOP RAIL, SIDE STILES 3 1/2"
J	TYPE	ALUMINUM STOREFRONT ENTRANCE DOOR W/ 10" BOTTOM RAIL, 6" CROSS RAIL AND 8" TOP RAIL; SIDE STILES 5 1/2"; TRUE DIVIDED LITE MUNTIN INSERTS
K	TYPE	FLUSH DOOR W/ 24" LOUVER 6" FROM EACH EDGE OF DOOR; BOTTOM 12" A.F.F.
L	TYPE	FLUSH DOOR W/ LOUVER 6" IN FROM EACH EDGE OF DOOR; 12" BOTTOM RAIL, 6" CROSS RAIL, 8" TOP RAIL
M	TYPE	FLUSH DOOR W/ ACOUSTICAL RATINGS OF 53 STC MINIMUM
N	TYPE	FLUSH DOOR W/ APPLIED MOLDING TO SIMULATE RAIL & STILE DOOR EA. SIDE; 33" VIEW LITE 6" IN FROM ADJACENT DOOR EDGES IN METAL FRAME; BOTTOM OF LITE 3"-1" A.F.F.; 8" TOP RAIL
P	TYPE	STILE & RAIL DOOR
R	TYPE	ACCORDION FOLDING PARTITION DOOR
S	TYPE	DOOR IN OPERABLE WALL PANELS TO MATCH CONSTR. OF WALL PANELS
T	TYPE	FULL TEMPERED GLASS DOOR
U	TYPE	DUTCH DOOR W/ SHELF AT 44" A.F.F.
V	TYPE	FLUSH DOOR W/ FULL LOUVER, 6" IN FROM EACH EDGE OF DOOR
N	TYPE	CHAIN LINK FENCE GATE
X	TYPE	EXISTING DOOR
Y	TYPE	FOLDING ACCESS STAIR
Z	TYPE	1/2 FLUSH DOOR 3'-6"; SET IN PARTIAL HEIGHT SOUND BOOTH GUARDRAIL
HM	M/F	MATERIAL - HOLLOW METAL
SC	M/F	MATERIAL - SOLID CORE WOOD
HC	M/F	MATERIAL - HOLLOW CORE WOOD
AL	M/F	MATERIAL - ALUMINUM
OP	M/F	MATERIAL - OPERABLE WALL
GH	M/F	MATERIAL - ALUMINUM CLAD WOOD
CS	M/F	MATERIAL - STAINLESS STEEL
C	M/F	FINISH - CLEAR SEALED
EP	M/F	FINISH - EPOXY PAINT
S	M/F	FINISH - STAINED AND SEALED
P	M/F	FINISH - PAINT
A	M/F	FINISH - ANODIZED
K	M/F	FINISH - KYNAR (BY STOREFRONT MANFR)
V	M/F	FINISH - VINYL
L	M/F	FINISH - PLASTIC LAMINATE
3'-0" x 7'-0" x 1-3/4"	SIZE	WIDTH x HEIGHT x THICKNESS OF DOOR IN FEET AND INCHES
H	GLAZ	1/4" CLEAR, POLISHED WIRE GLASS IN APPROVED METAL FRAME
TC	GLAZ	1/4" THICK TEMPERED, CLEAR GLASS
TT	GLAZ	1/4" TEMPERED, TINTED GLASS
NC	GLAZ	5/8" INSULATED CLEAR GLASS, TEMPERED WHERE REQ.
NT	GLAZ	1" INSULATED TINTED GLASS, TEMPERED WHERE REQUIRED
FC	GLAZ	1/4" THICK FIRE RATED CERAMIC GLASS - "FIREGLASS 20"
PC	GLAZ	1/2" POLYCARBONATE GLASS (BULLET RESISTANT)
OW	GLAZ	1/4" THICK ONE-WAY TEMPERED GLASS
F2	FRAME	FRAME TYPE NUMBER (INDICATES HOLLOW METAL FRAME); REFER TO FRAME ELEVATIONS
A2	FRAME	FRAME TYPE LETTER (INDICATES ALUMINUM FRAME); REFER TO FRAME ELEVATIONS
X	FRAME	EXISTING FRAME; REPAIR & REFINISH
X	HEAD, JAMB, SILL	EXISTING HEAD, JAMB OR SILL DETAIL; REPAIR & REFINISH
H2	HEAD, JAMB, SILL	HEAD, JAMB OR SILL DETAIL REFERENCE; REFER TO DETAIL SHEET
X	HDWE	EXISTING HARDWARE; REFURBISH AS REQUIRED
4	HDWE	HARDWARE SET NUMBER; SEE HARDWARE SCHEDULE
--	LABEL	NO FIRE RATING REQUIRED
20	LABEL	1/3 HOUR FIRE RATED ASSEMBLY
20C	LABEL	DOOR W/ CERTIFICATION LETTER INDICATING CONSTR. IS SIMILAR TO 20 MINUTE FIRE RATED ASSEMBLY
45	LABEL	3/4 HOUR FIRE RATED ASSEMBLY (EXTERIOR EXPOSURE)
45E	LABEL	3/4 HOUR FIRE RATED ASSEMBLY (EXTERIOR EXPOSURE)
60	LABEL	1 HOUR FIRE RATED ASSEMBLY, 450° TEMPERATURE RATING WHERE USED IN STAIRS OR EXIT PASSAGES
40	LABEL	1-1/2 HOUR FIRE RATED ASSEMBLY, 450° TEMPERATURE RATING WHERE USED IN STAIRS OR EXIT PASSAGES
180	LABEL	3 HOUR FIRE RATED ASSEMBLY
X	REMARKS	EXISTING DOOR, FRAME AND HARDWARE
1	REMARKS	SEE DOOR SCHEDULE REMARKS LIST FOR UNIQUE NOTE

GENERAL DOOR NOTES

IT IS THE INTENT OF THE CONTRACT DOCUMENTS TO PROVIDE FOR A COMPLETE INSTALLATION OF ALL DOORS, DOOR VIEW WINDOWS, SIDELIGHTS, FRAMES, HARDWARE, ETC. AS REQUIRED. CONTRACTOR SHALL INSTALL ALL ITEMS AS INDICATED AND AS RECOMMENDED BY ANS/DI, NAAMM, AND UL AND THE REQUIREMENTS OF THE TESTING AGENCY FOR RATED OPENINGS. PROVIDE ALL MATERIALS, LABOR, EQUIPMENT, ACCESSORIES, ANCHORS, ATTACHMENT, CONNECTIONS, ETC. REQUIRED FOR A COMPLETE AND OPERABLE INSTALLATION.

- GENERAL - REFER ALSO TO GENERAL NOTES ON SHEET 6102 FOR ADDITIONAL INFORMATION.
- DETAILS - DOOR TYPES, DETAIL NUMBERS AND FRAME TYPE LETTERS REFER TO ELEVATIONS ON A610. DOOR DETAILS REFER TO SHEET A611.
- FRAMES - ALL DOOR FRAMES SHALL BE OF GALVANIZED, COLD-ROLLED STEEL WITH MITERED AND WELDED CORNER JOINTS FULL LENGTH OF JOINTS. GRIND ALL WELDS SMOOTH. EXTERIOR FRAMES SHALL BE 14 GAUGE S-10 GALVANIZED AND INTERIOR FRAMES SHALL BE 16 GAUGE A-60 GALVANIZED, UNLESS NOTED OTHERWISE. PROVIDE BAKED-ON PRIME COAT ALL SURFACES.
- DOORS - ALL DOORS SHALL BE 1-3/4" THICK, UNLESS NOTED OTHERWISE. ALL RATED DOORS SHALL BEAR AN ACCEPTED TESTING AGENCY LABEL WITH REQUIRED RATINGS INDICATED. DO NOT ALLOW LABELS TO BE PAINTED OVER, REMOVED OR OTHERWISE DAMAGED.
- FRAME LABELS - DOOR FRAMES FOR RATED DOORS SHALL BEAR ACCEPTED TESTING AGENCY LABEL COMPARABLE WITH THE DOOR RATING REQUIREMENT.
- JAMB ANCHORS - EACH JAMB SHALL HAVE A MINIMUM OF 4 ANCHORS PER JAMB, SECURELY TIED TO THE DOUBLE STUD JAMB AT EACH SIDE OF DOOR, OR TO THE MASONRY OR CONCRETE WALL EACH SIDE OF THE FRAME.
- SILENCERS - ALL FRAMES SHALL HAVE A MINIMUM OF 3 SILENCERS AT EACH STRIKE SIDE OF THE FRAME. PAIRS OF DOORS OR DOUBLE ESSESS DOORS SHALL HAVE A MINIMUM OF 2 SILENCERS AT THE HEAD OF THE FRAME. DELETE SILENCERS AT DOORS HAVING FULL WEATHERSTRIPPING OR ACOUSTICAL SEALS. INSTALL SILENCERS AFTER DOOR AND FRAME HAS BEEN INSTALLED, PAINTED, FINISHED AND ALLOWED TO CURE.
- GROUT - ALL FRAMES IN METAL STUD CONSTRUCTION SHALL HAVE FRAME ANCHORS SPOT GROUTED. ALL FRAMES IN MASONRY OR CONCRETE WALLS SHALL HAVE FRAMES GROUTED SOLID. APPLY BITUMINOUS PAINT TO INSIDE OF ALL FRAMES REQUIRED TO BE GROUTED SOLID.
- SEALANT - SEAL ALL FRAMES CONTINUOUS AT EACH JAMB AND ACROSS HEAD, BOTH SIDES OF FRAME. WHERE FLOORING OR BASE IS SCRIBED TO FRAME, SEAL CONTINUOUS AT JUNCTION.
- LOUVERS - INSTALL LOUVERS IN DOORS AS SHOWN OR SCHEDULED AND AS INDICATED ON MECHANICAL DRAWINGS. VERIFY SIZE REQUIREMENT WITH MECHANICAL DRAWINGS PRIOR TO DOOR FABRICATION. DO NOT INSTALL LOUVERS ON RATED DOORS. LOUVERS AT EXTERIOR DOORS SHALL BE WEATHER-RESISTANT TYPE.
- TRANSITION STRIPS - PROVIDE FLOOR TRANSITION STRIPS UNDER ALL NON-RATED DOORS WHERE ADJACENT FLOORS ARE AT DIFFERENT LEVELS AND WHERE ADJACENT FLOOR FINISHES ARE OF DIFFERENT MATERIALS, UNLESS NOTED OTHERWISE. TRANSITION STRIPS SHALL BE SELECTED BY ARCHITECT AND SHALL BE 1/2" MAXIMUM THICKNESS.
- NON-COMBUSTIBLE SILLS - PROVIDE 1/4" THICK FLAT STAINLESS STEEL THRESHOLD PLATES ON ALL DOORS OF 3 HOUR RATINGS. RECESS PLATES SO THAT TOP IS FLUSH WITH FLOOR FINISH EACH SIDE OF THRESHOLD AND MAXIMUM 3/8" TO BOTTOM OF DOOR.
- UNDERCUTS - PROVIDE UNDERCUTS ON DOORS ONLY WHERE SHOWN ON MECHANICAL DRAWINGS. UNDERCUTS SHALL BE 3/4" MAXIMUM FROM BOTTOM EDGE OF DOOR TO CONCRETE SLAB OR 1/2" MAXIMUM TO CLASS 2 FLOOR FINISH.
- VIEW WINDOWS - INSTALL AT LOCATIONS INDICATED. ALL VIEW WINDOW FRAMES SHALL BE APPROVED METAL THRU-BOLTED CONSTRUCTION, UNLESS NOTED OTHERWISE. USE RATED METAL FRAMES WITH 1/4" WIRE GLASS IN ALL RATED DOORS. PAINT ALL VIEW WINDOW FRAMES TO MATCH DOOR FRAMES UNLESS NOTED OTHERWISE.



DOOR SCHEDULE

ROOM NO.	ROOM NAME	DOOR		DOOR SIZE (H x W x T)	GLAZE	FRAME		DETAILS			OPENING	
		MARK	TYPE			TYPE	M/F	HEAD	JAMB	SILL	HOME	LABEL
FIRST FLOOR - CHILDREN'S ADDITION												
A100	GATHERING SPACE	A100	H	AL/K	(2) 3'-0" x 7'-0" x 1-3/4"	NT	A2	AL/K		TT	9.2	
A102	OFFICE/NURSING	A102	D	SC/S	3'-0" x 7'-0" x 1-3/4"	FC	FI	HMP	HI	JL	T2	4.2
A102	OFFICE/NURSING	A102A	A	SC/S	3'-0" x 7'-0" x 1-3/4"	--	FI	HMP	HI	JL	--	4.1
A103	CORRIDOR	A103	D	SC/S	3'-0" x 7'-0" x 1-3/4"	TC	FI	HMP	HI	JL	--	4.1
A103	CORRIDOR	A103A	C	SC/S	(2) 3'-0" x 7'-0" x 1-3/4"	TC	FI	HMP	HI	JL	--	7.2
A104	NURSERY	A104	U	SC/S	3'-0" x 7'-0" x 1-3/4"	FC	FI	HMP	HI	JL	TT	5.5
A105	CLOSET	A105	A	SC/S	3'-0" x 7'-0" x 1-3/4"	--	FI	HMP	HI	JL	--	5.5
A106	TOILET	A106	A	SC/S	3'-0" x 7'-0" x 1-3/4"	--	FI	HMP	HI	JL	TS	3.1
A106	TOILET	A106A	A	SC/S	3'-0" x 7'-0" x 1-3/4"	--	FI	HMP	HI	JL	TS	3.1
A107	PRESCHOOL CLASSROOM 1	A107	C	SC/S	3'-0" x 7'-0" x 1-3/4"	FC	FI	HMP	HI	JL	TT	5.5
A108	CLOSET	A108	A	SC/S	3'-0" x 7'-0" x 1-3/4"	--	FI	HMP	HI	JL	TT	2.3
A109	INTERIM CHILD. CLASSRM 1	A109	C	SC/S	3'-0" x 7'-0" x 1-3/4"	FC	FI	HMP	HI	JL	TT	5.2
A110	CLOSET	A110	A	SC/S	3'-0" x 7'-0" x 1-3/4"	--	FI	HMP	HI	JL	TT	2.3
A111	TOILET	A111	A	SC/S	3'-0" x 7'-0" x 1-3/4"	--	FI	HMP	HI	JL	TS	3.3
A111	TOILET	A111A	A	SC/S	3'-0" x 7'-0" x 1-3/4"	--	FI	HMP	HI	JL	TS	3.3
A112	INTERIM CHILD. CLASSRM 2	A112	C	SC/S	3'-0" x 7'-0" x 1-3/4"	FC	FI	HMP	HI	JL	TT	5.2
A113	CLOSET	A113	A	SC/S	3'-0" x 7'-0" x 1-3/4"	--	FI	HMP	HI	JL	TT	2.1
A114	CORRIDOR	A114	C	HMP	3'-0" x 7'-0" x 1-3/4"	NT	HMP				TT	7.5
A114	CORRIDOR	A114A	C	HMP	3'-0" x 7'-0" x 1-3/4"	--	FI	HMP	HI	JL	TT	7.5
A116	MEN	A116	A	SC/S	3'-0" x 7'-0" x 1-3/4"	--	FI	HMP	HI	JL	TS	3.2
A117	WOMEN	A117	A	SC/S	3'-0" x 7'-0" x 1-3/4"	--	FI	HMP	HI	JL	TS	3.2
A118	PREP ROOM	A118	C	SC/S	3'-0" x 7'-0" x 1-3/4"	FC	FI	HMP	HI	JL	TT	5.2
A118	PREP ROOM	A118A	A	SC/S	3'-0" x 7'-0" x 1-3/4"	--	FI	HMP	HI	JL	TT	5.4
A119	PREP ROOM	A119	C	SC/P	(4) 3'-0" x 4'-0" x 1-3/8"	--	HMP				10J	5.4
A119	STORAGE	A119	A	SC/S	3'-0" x 7'-0" x 1-3/4"	--	FI	HMP	HI	JL	TT	5.4
A120	M.P. INDOOR PLAY	A120	D	SC/S	(2) 3'-0" x 7'-0" x 1-3/4"	FC	FI	HMP	HI	JL	TT	7.2
A120	M.P. INDOOR PLAY	A120A	A	HMP	3'-0" x 7'-0" x 1-3/4"	--	FI	HMP	HI	JL	TT	7.5
A122	INTERIM CHILD. CLASSRM 3	A122	C	SC/S	3'-0" x 7'-0" x 1-3/4"	FC	FI	HMP	HI	JL	TT	5.2
A123	CLOSET	A123	A	SC/S	3'-0" x 7'-0" x 1-3/4"	--	FI	HMP	HI	JL	TT	2.1
A123	TOILET	A123A	A	SC/S	3'-0" x 7'-0" x 1-3/4"	--	FI	HMP	HI	JL	TS	3.3
A124	TOILET	A124A	A	SC/S	3'-0" x 7'-0" x 1-3/4"	--	FI	HMP	HI	JL	TS	3.3
A125	PRESCHOOL CLASSROOM 2	A125	C	SC/S	3'-0" x 7'-0" x 1-3/4"	FC	FI	HMP	HI	JL	TT	5.2
A126	CLOSET	A126	A	SC/S	3'-0" x 7'-0" x 1-3/4"	--	FI	HMP	HI	JL	TT	2.1
A127	PRESCHOOL CLASSROOM 3	A127	C	SC/S	3'-0" x 7'-0" x 1-3/4"	FC	FI	HMP	HI	JL	TT	5.2
A128	CLOSET	A128	A	SC/S	3'-0" x 7'-0" x 1-3/4"	--	FI	HMP	HI	JL	TT	2.3
A129	TOILET	A129A	A	SC/S	3'-0" x 7'-0" x 1-3/4"	--	FI	HMP	HI	JL	TS	3.1
A129	TOILET	A129A	A	SC/S	3'-0" x 7'-0" x 1-3/4"	--	FI	HMP	HI	JL	TS	3.1
A130	PRESCHOOL CLASSROOM 4	A130	C	SC/S	3'-0" x 7'-0" x 1-3/4"	FC	FI	HMP	HI	JL	TT	5.2
A131	CLOSET	A131	A	SC/S	3'-0" x 7'-0" x 1-3/4"	--	FI	HMP	HI	JL	TT	2.3
A131	RESOURCE ROOM	A131	C	SC/S	3'-0" x 7'-0" x 1-3/4"	FC	FI	HMP	HI	JL	TT	5.2
A134	LAUNDRY	A134	A	SC/S	3'-0" x 7'-0" x 1-3/4"	--	FI	HMP	HI	JL	TT	2.1
A136	CENTRAL CORRIDOR	A136	D	HMP	3'-0" x 7'-0" x 1-3/4"	NT	FI	HMP			TT	7.5
A137	MEN	A137	A	SC/S	3'-0" x 7'-0" x 1-3/4"	--	FI	HMP	HI	JL	TS	2.2
A138	WOMEN	A138	A	SC/S	3'-0" x 7'-0" x 1-3/4"	--	FI	HMP	HI	JL	TS	2.2
A139	JANITOR	A139	A	SC/S	3'-0" x 7'-0" x 1-3/4"	--	FI	HMP	HI	JL	TS	5.7
A140	GOD'S STOREHOUSE	A140	A	SC/S	3'-6" x 7'-0" x 1-3/4"	--	FI	HMP	HI	JL	TS	9.5
A140	GOD'S STOREHOUSE	A140A	A	SC/S	3'-6" x 7'-0" x 1-3/4"	--	FI	HMP	HI	JL	--	9.6
A141	STOREHOUSE WORKROOM	A141	C	HMP	3'-6" x 7'-0" x 1-3/4"	NT	FI	HMP			TT	8.1
A142	ELECTRICAL	A142	A	HMP	3'-6" x 7'-0" x 1-3/4"	--	FI	HMP			TT	7.3
FIRST FLOOR - ELEVATOR ADDITION												
E102	ELEVATOR LOBBY	E102	B	SC/S	(2) 3'-0" x 7'-0" x 1-3/4"	FC	F2	HMP			TS	7.4
E102	ELEVATOR LOBBY	E102A	D	HMP	3'-0" x 7'-0" x 1-3/4"	NT	F2	HMP			TT	8.1
E103	ELEVATOR EQUIP.	E103	A	SC/S	3'-0" x 7'-0" x 1-3/4"	--	FI	HMP	HI	JL	TS	6.2
FIRST FLOOR - GATHERING SPACE ADDITION												
G101	GATHERING SPACE	G100	H	AL/K	(2) 3'-0" x 7'-0" x 1-3/4"	NT	A2	AL/K		TT	9.2	
G101	GATHERING SPACE	G101	H	AL/K	3'-6" x 7'-0" x 1-3/4"	NT	A1	AL/K		TT	9.1	
G101	GATHERING SPACE	G101A	A	HMP	(2) 3'-0" x 7'-0" x 1-3/4"	--	FI	HMP	HI	JL	TS	7.4
G101	GATHERING SPACE	G101B	A	HMP	(2) 3'-0" x 7'-0" x 1-3/4"	--	FI	HMP	HI	JL	TS	7.6
G101	GATHERING SPACE	G101C	A	HMP	(2) 3'-0" x 7'-0" x 1-3/4"	--	FI	HMP	HI	JL	TS	7.6
FIRST FLOOR - EXISTING BUILDING												
X102	STORAGE	X102	A	SC/P	3'-0" x 7'-0" x 1-3/4"	--	FI	HMP	HI	JL	--	5.1
X												