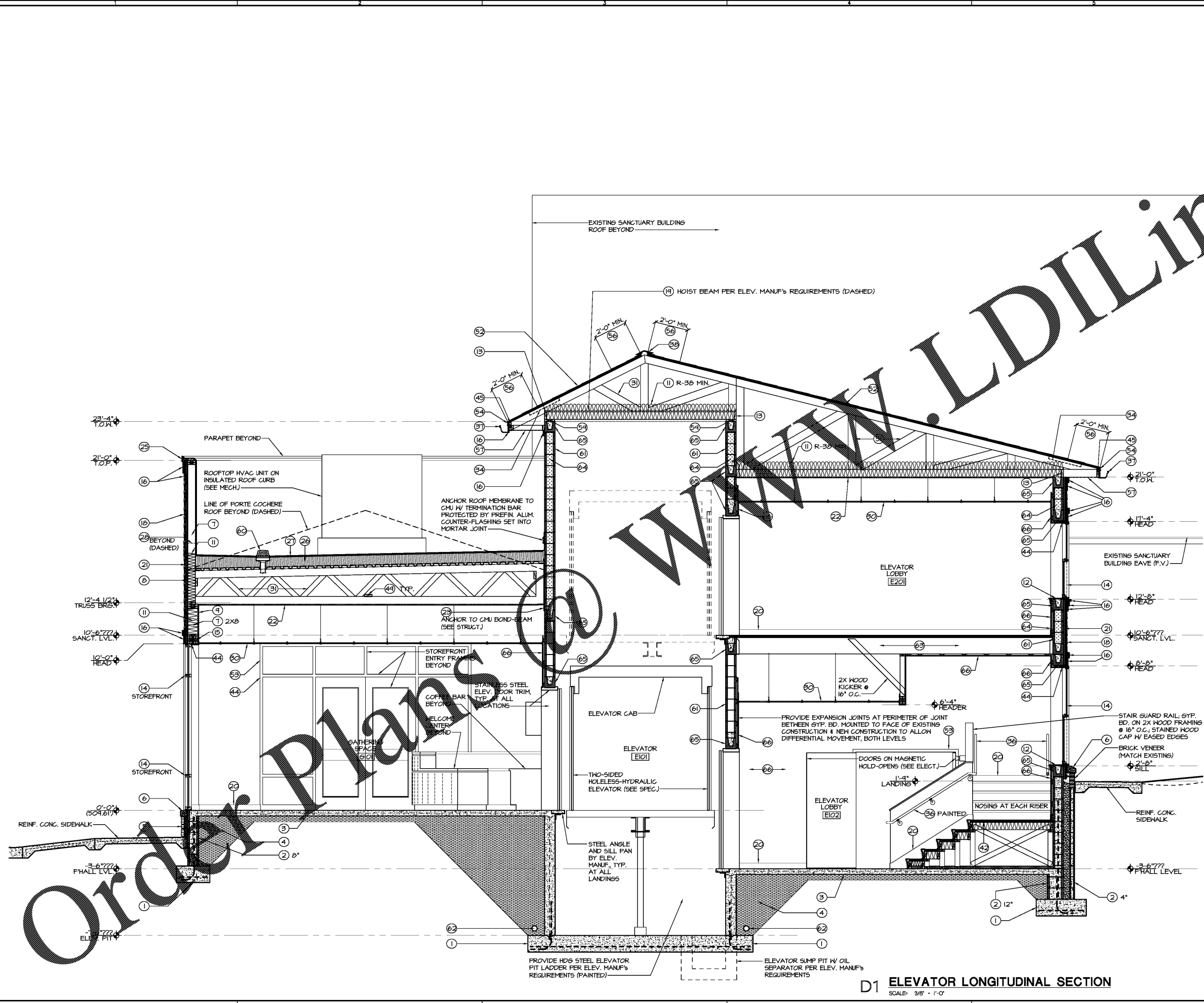


21 SEP 2017 1:04:50 PM 1904-SDV4210.dwg BFC: mgr/ffn PLOTTED BY: mgr/ffn



- ### SECTION KEYNOTES
- 1 REINFORCED CONCRETE FOOTING (SEE STRUCT.)
  - 2 REINFORCED CMU FOOTING WALL
  - 3 REINFORCED CONCRETE SLAB ON VAPOR BARRIER
  - 4 COMPACTED GRANULAR FILL ON FILTER FABRIC
  - 5 MANUFACTURED STONE VENEER ON GALVANIZED METAL LATH WITH RAIN SCREEN ON TWO LAYERS OF 30# FELT (BALD)
  - 6 CAST STONE WATER TABLE WITH FLASHING INTEGRATED DRAIN EDGE
  - 7 2x6 P.T. WOOD FRAMING @ 16" O.C.
  - 8 1" EXTERIOR STRUCTURAL PLYWOOD SHEATHING ON FACE OF WOOD FRAMING (SEE STRUCT.)
  - 9 5/8" EXTERIOR GYPSUM SHEATHING
  - 10 GALVANIZED METAL SCREED
  - 11 FIBERGLASS BATT INSULATION
  - 12 FINISHED WOOD SILL
  - 13 P.T. WOOD NAILER
  - 14 WINDOW AS SCHEDULED (PRICE AS COMMERCIAL SINGLE-HUNG WINDOW W/ INSECT SCREEN)
  - 15 BRICK FRAMING HEADER
  - 16 FIBER CEMENT TRIM
  - 17 STARTER FLASHING
  - 18 FIBER CEMENT CLADDING
  - 19 STEEL BEAM (SEE STRUCT.)
  - 20 BASE AS SCHEDULED
  - 21 1" POLYISOCYANURATE RIGID INSULATION BOARD W/ VAPOR-PERMEABLE BUILDING WRAP ON FACE OF INSULATION
  - 22 5/8" INTERIOR GYPSUM BOARD (FIRE-RATED ON UNDERSIDE OF ROOF/FLOOR FRAMING)
  - 23 GALVANIZED STEEL ANGLE (SEE STRUCT.)
  - 24 PREFIN. ALUM. STARTER FLASHING W/ P.T. WOOD STARTER STRIP
  - 25 PREFINISHED ALUMINUM SNAP-ON FASCIA TRIM
  - 26 POLY ISO. ROOF INSULATION ON GALVANIZED METAL DECKING (SEE STRUCT.)
  - 27 FULLY-ADHERED ROOF MEMBRANE ON 1/2" GYPSUM COVER BOARD
  - 28 PREFINISHED THRU-WALL SCUFFER
  - 29 PREFINISHED ALUMINUM DOWNEPOUT
  - 30 LAY-IN CEILING AS SCHEDULED
  - 31 PREFABRICATED WOOD TRUSS @ 24" O.C. (SEE STRUCT.)
  - 32 2X WOOD FLOOR JOISTS @ 16" O.C. (SEE STRUCT.)
  - 33 ARCHITECTURAL WOODWORK (PLASTIC LAMINATED ON PARTICLE BOARD SUBSTRATE EXCEPT @ NET CONDITIONS WHERE WATER-RESISTANT MDF TO BE PROVIDED)
  - 34 ATTIC Baffles ANCHORED TO ADJACENT TRUSSES/FRAMING
  - 35 GUARD RAIL
  - 36 HAND RAIL
  - 37 PREFIN. ALUM. GUTTER
  - 38 PREFAB. RIDGE VENT ASSEMBLY; LEAVE 2" GAP, MIN. IN ROOF DECKING AT ROOF RIDGE
  - 39 ALUMINUM THRESHOLD AS SCHEDULED
  - 40 ISOLATION JOINT W/ SEALANT
  - 41 1 1/2" @ HANDRAIL ON WALL BRACKETS @ 5'-0", MAX.
  - 42 3/4" T&G PLYWOOD DECKING SCREWED & GLUED TO FRAMING
  - 43 WOOD TRIM APRON (PAINTED)
  - 44 SEAL EDGE/PERIMETER
  - 45 P.T. WOOD SUB-FASCIA
  - 46 LVL BEAM (SEE STRUCT.)
  - 47 BRICK VENEER
  - 48 THRU-WALL FLASHING
  - 49 CONTINUOUS LATERAL BRACING (SEE STRUCT.)
  - 50 BOLLARD AS SCHEDULED
  - 51 1" STRUCTURAL INSULATED SHEATHING
  - 52 ARCHITECTURAL ASPHALT SHINGLES ON ROOF UNDERLAYMENT ON T&G P.T. ROOF DECKING
  - 53 DOOR AND FRAME AS SCHEDULED
  - 54 PREFINISHED ALUMINUM DRIP EDGE
  - 55 PARAPET GAP W/ INTEGRAL FIRE BARRIER & EXPANSION JOINT
  - 56 SELF ADHERED UNDERLAYMENT
  - 57 FIBER CEMENT SOFFIT PANELS SECURED TO FRAMING (VENTED)
  - 58 F.R. WOOD BLOCKING / NAILERS ANCHORED IN PLACE
  - 59 ANCHOR SILL PLATE TO CONCRETE SLAB W/ "J" BOLTS @ 32" O.C. MAX. (SEE STRUCT.)
  - 60 ROOF DRAIN ASSEMBLY
  - 61 CMU AS SCHEDULED
  - 62 FOOTING DRAIN (PERFORATED HDPE PIPE (IN FILTER SOCK); CONNECT TO STORM PIPING)
  - 63 WOOD LVL FLOOR JOIST @ 12" O.C. (SEE STRUCT.)
  - 64 FOAM INSULATION
  - 65 REINFORCED CMU BOND BEAM/INTEL (SEE STRUCT.)
  - 66 3/8" GYP. BD. ON 3/8" MTL. FURRING CHANNEL @ 16" O.C.

**D1 ELEVATOR LONGITUDINAL SECTION**  
SCALE: 3/8" = 1'-0"

**SCHEMATIC DESIGN - FOR PRICING ONLY - Not for Construction**

**Corley Timothy Sweeney McCormac**  
 ARCHITECTS, INC.  
 THREE RIVERCHASE OFFICE PLAZA / SUITE 124 / HOOPER, ALABAMA 35244  
 T 205.443.3790 W ctsmarchitects.com

**FIRST BAPTIST CHURCH**  
**CHILDREN'S ADDITION**  
 HAYDEN, ALABAMA  
 09-29-17 1904  
 REVISED:

**A215**