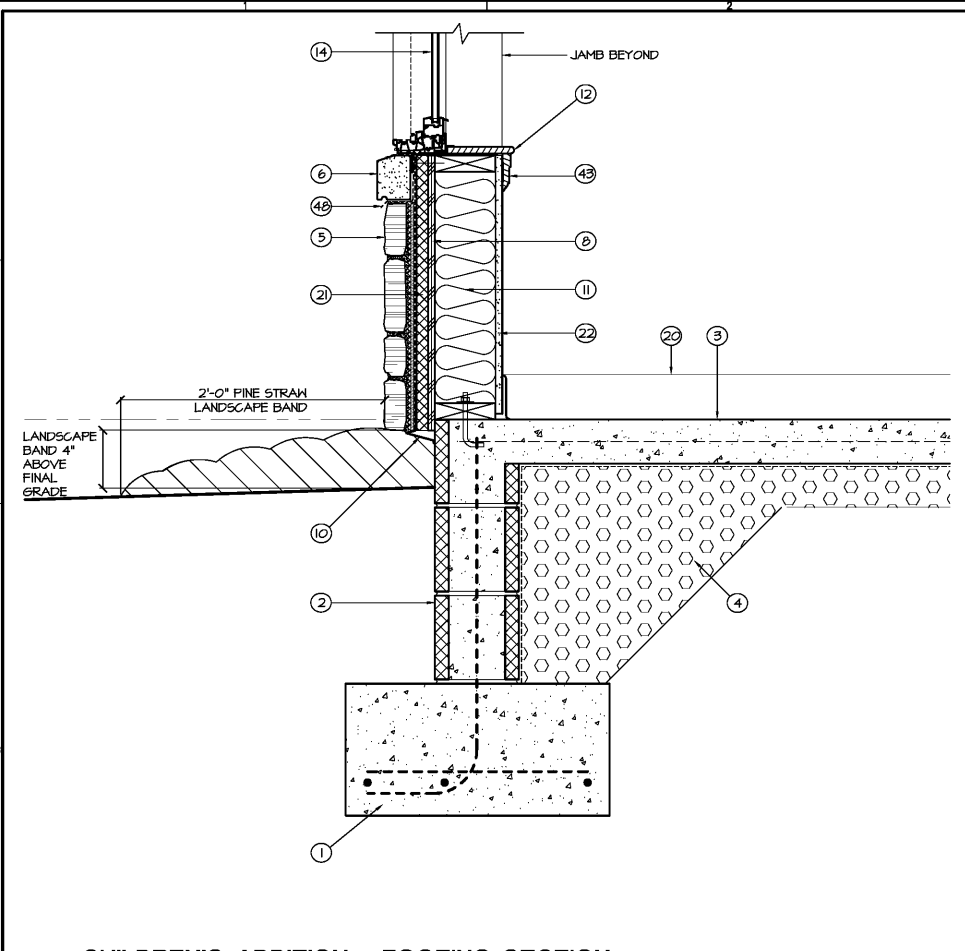
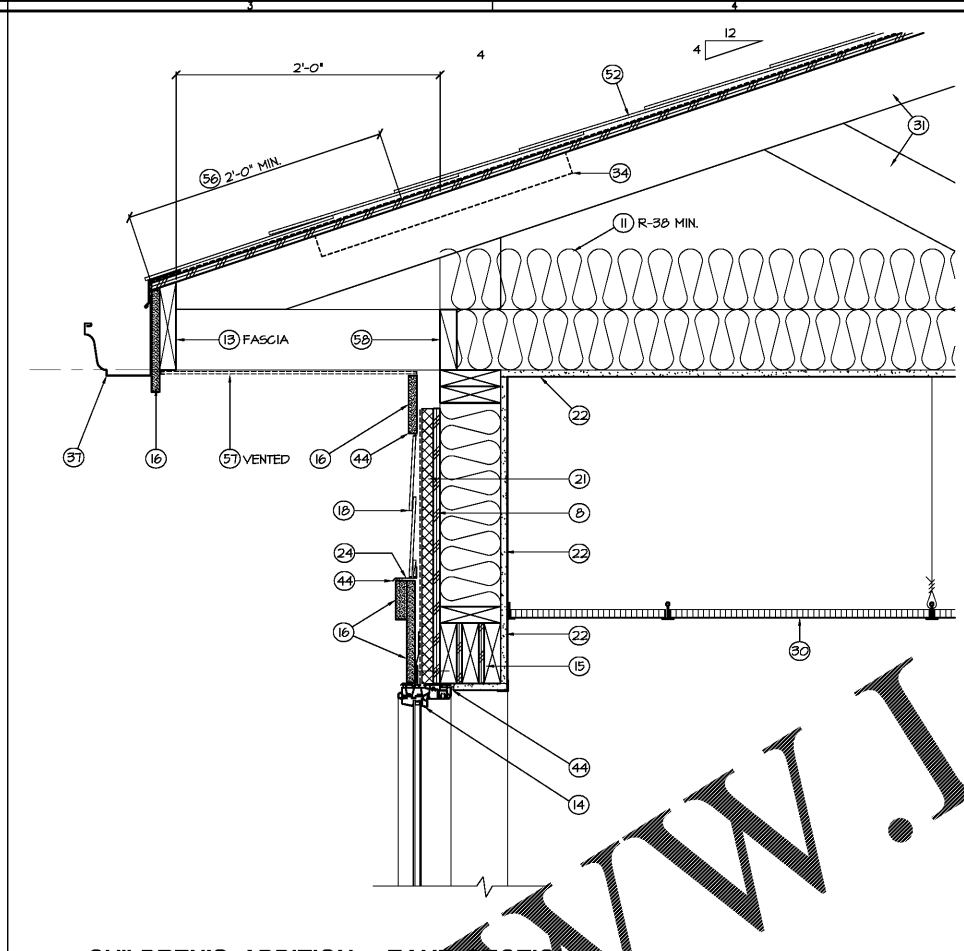


PLOTTED BY: mgriffin 21 SEP 2017 \projects\1904-FBC-Hayden\1904-SD\A210.dwg
 © copyright 2017, CSM ARCHITECTS, INC. THESE DRAWINGS / FILES ARE INSTRUMENTS OF SERVICE AND SHALL REMAIN THE SOLE PROPERTY OF THE ARCHITECT. THEY ARE NOT TO BE REPRODUCED IN ANY FORM WITHOUT WRITTEN CONSENT OF THE ARCHITECT.



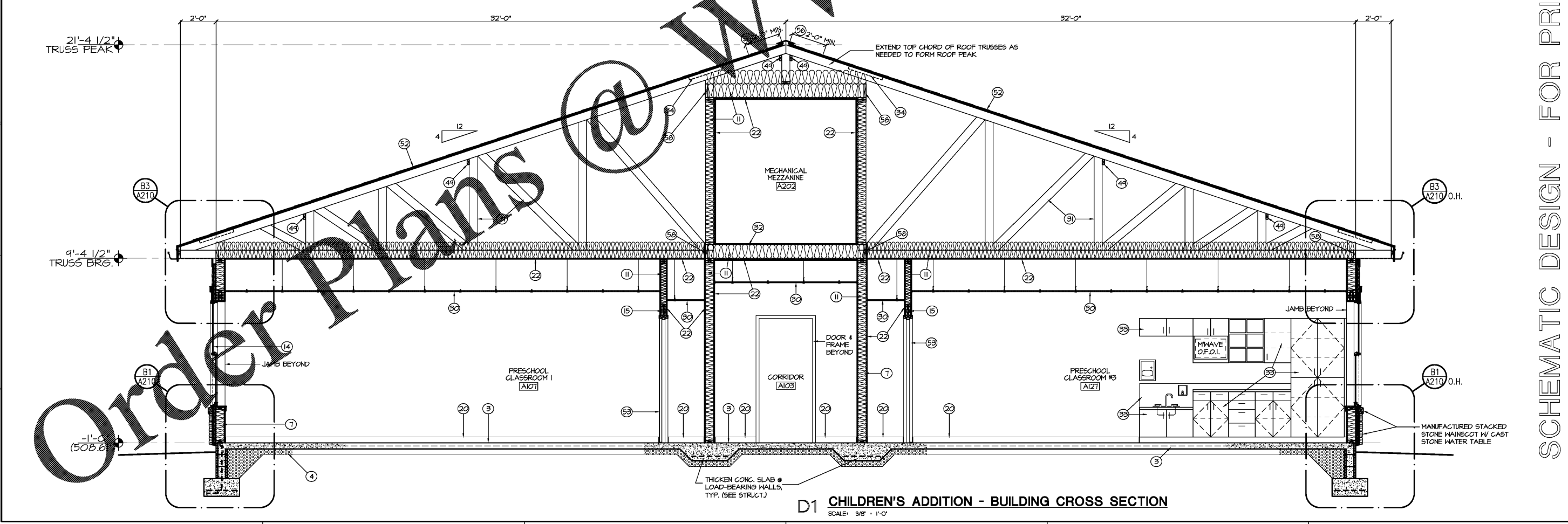
B1 CHILDREN'S ADDITION - FOOTING SECTION
SCALE: 1/2" = 1'-0"



B3 CHILDREN'S ADDITION - EAVE SECTION
SCALE: 1/2" = 1'-0"

SECTION KEYNOTES

| | |
|---|--|
| <p>1 REINFORCED CONCRETE FOOTING (SEE STRUCT.)</p> <p>2 REINFORCED CMU FOOTING WALL</p> <p>3 REINFORCED CONCRETE SLAB ON VAPOR BARRIER</p> <p>4 COMPACTED GRANULAR FILL ON FILTER FABRIC</p> <p>5 MANUFACTURED STONE VENEER ON GALVANIZED METAL LATH ON RAIN SCREEN ON TWO LAYERS OF 30# FELT (DASHED)</p> <p>6 CAST STONE WATER TABLE WITH FLASHING & INTEGRAL DRIP EDGE</p> <p>7 2x6 P.T. WOOD FRAMING @ 16" O.C.</p> <p>8 1/2" EXTERIOR STRUCTURAL PLYWOOD SHEATHING ON FACE OF WOOD FRAMING (SEE STRUCT.)</p> <p>9 5/8" EXTERIOR GYPSUM SHEATHING</p> <p>10 GALVANIZED METAL SCREEN</p> <p>11 FIBERGLASS BATT INSULATION</p> <p>12 PAINTED WOOD SILL</p> <p>13 P.T. WOOD NAILER</p> <p>14 WINDOW AS SCHEDULED (PRICE AS COMMERCIAL SINGLE-HUNG WINDOW W/ INSECT SCREEN)</p> <p>15 BUILT-UP FRAMING HEADER</p> <p>16 FIBER CEMENT TRIM</p> <p>17 STARTER FLASHING</p> <p>18 FIBER CEMENT CLADDING</p> <p>19 STEEL BEAM (SEE STRUCT.)</p> <p>20 BASE AS SCHEDULED</p> <p>21 1" POLYISOCYANURATE RIGID INSULATION BOARD W/ VAPOR PERMEABLE BARRIER HRAF ON FACE OF INSULATION</p> <p>22 5/8" INTERIOR GYPSUM BOARD (FIRE-RATED ON UNDERSIDE OF ROOF/FLOOR FINISHING)</p> <p>23 GALVANIZED STEEL ANGLE (SEE STRUCT.)</p> <p>24 PREFIN. ALUM. STAMPER FLASHING W/ P.T. WOOD STARTER STRIP</p> <p>25 PREFINISHED ALUMINUM SNAP-ON FASCIA TRIM</p> <p>26 POLYISO. ROOF INSULATION ON GALVANIZED METAL DECKING (SEE STRUCT.)</p> <p>27 FULLY WATERED ROOF MEMBRANE ON 3/8" GYPSUM COVER BOARD</p> <p>28 PREFINISHED THRU-HALL SCUPPER</p> <p>29 PREFINISHED ALUMINUM DOWNSPOUT</p> <p>30 LAY-IN CEILING AS SCHEDULED</p> <p>31 PREFABRICATED WOOD TRUSS @ 24" O.C. (SEE STRUCT.)</p> <p>32 2X WOOD FLOOR JOISTS @ 16" O.C. (SEE STRUCT.)</p> <p>33 ARCHITECTURAL WOODWORK (PLASTIC LAMINATED ON PARTICLE BOARD SUBSTRATE EXCEPT @ MET CONDITIONS WHERE WATER-RESISTANT MDF TO BE PROVIDED)</p> <p>34 ATTIC BAFFLES ANCHORED TO ADJACENT TRUSSES/FRAMING</p> <p>35 GUARD RAIL</p> <p>36 HAND RAIL</p> <p>37 PREFIN. ALUM. GUTTER</p> | <p>38 PREFAB. RIDGE VENT ASSEMBLY; LEAVE 2" GAP, MIN. IN ROOF DECKING AT ROOF RIDGE</p> <p>39 ALUMINUM THRESHOLD AS SCHEDULED</p> <p>40 ISOLATION JOINT W/ SEALANT</p> <p>41 1 1/2" Ø HANDRAIL ON WALL BRACKETS @ 5'-0" MAX.</p> <p>42 3/4" T&G PLYWOOD DECKING SCREWED & GLUED TO FRAMING</p> <p>43 WOOD TRIM AFFRON (PAINTED)</p> <p>44 SEAL EDGE/PERIMETER</p> <p>45 P.T. WOOD SUB-FASCIA</p> <p>46 LVL BEAM (SEE STRUCT.)</p> <p>47 BRICK VENEER</p> <p>48 THRU-WALL FLASHING</p> <p>49 CONTINUOUS LATERAL BRACING (SEE STRUCT.)</p> <p>50 BOLT AS SCHEDULED</p> <p>51 1" STRUCTURAL INSULATED SHEATHING</p> <p>52 ARCHITECTURAL ASPHALT SHINGLES ON ROOF UNDERLAYMENT ON 1/2" P.T. OF DECKING</p> <p>53 WINDOW FRAME AS SCHEDULED</p> <p>54 PREFINISHED ALUMINUM DRIP EDGE</p> <p>55 PARAPET GAP W/ INTEGRAL FIRE BARRIER & EXPANSION JOINT</p> <p>56 SELF ADHERED UNDERLAYMENT</p> <p>57 FIBER CEMENT SOFFIT PANELS SECURED TO FRAMING (VENTED)</p> <p>58 FR. WOOD BLOCKING / NAILERS ANCHORED IN PLACE</p> <p>59 ANCHOR SILL PLATE TO CONCRETE SLAB W/ "J" BOLTS @ 32" MAX. (SEE STRUCT.)</p> <p>60 ROOF DRAIN ASSEMBLY</p> <p>61 CMU AS SCHEDULED</p> <p>62 FOOTING DRAIN (PERFORATED HDPE PIPE (IN FILTER SOCK), CONNECT TO STORM PIPING)</p> <p>63 WOOD LVL FLOOR JOIST @ 12" O.C. (SEE STRUCT.)</p> <p>64 FOAM INSULATION</p> <p>65 REINFORCED CMU BOND BEAM/INTEL. (SEE STRUCT.)</p> <p>66 3/8" GYP. BD. ON 3/4" MTL. FURRING CHANNEL @ 16" O.C.</p> |
|---|--|



D1 CHILDREN'S ADDITION - BUILDING CROSS SECTION
SCALE: 3/8" = 1'-0"

SCHEMATIC DESIGN - FOR PRICING ONLY - Not for Construction
CHILDREN'S ADDITION BUILDING CROSS SECTION
 Corley Timothy Sweeney McCormac
 C T S M A R C H I T E C T S , I N C.
 THREE RIVERCHASE OFFICE PLAZA / SUITE 124 / HOOVER, ALABAMA 35244
 F 205.443.3790 W ctsmarchitects.com
 ALABAMA
 09-29-17
 1904
FIRST BAPTIST CHURCH
CHILDREN'S ADDITION
 HAYDEN.
 REVISED:
A210