

TIMECLOCK SCHEDULE				
NO.	LABEL AS SHOWN	MANUFACTURER	HOTLINE	CONTACT
T81	ALL LIGHTING	TORX	120V 2P	20A 120V 9PDT

SETTING NOTES  
INDOOR 1 DAY,  
24 HR  
NOTES: 1

NOTES:  
1. CONTRACTOR SHALL SUPPLY 98403 OVERRIDE SWITCH SET AT 2 HOUR OVERRIDE.

### ADA NOTE

LIGHT SWITCHES, ELECTRICAL OUTLETS, AND OTHER ENVIRONMENTAL CONTROLS SHALL HAVE OPERABLE PARTS TO THE CONTROLS LOCATED NO HIGHER THAN 48" AND NO LOWER THAN 15".

### NOTE

CONTRACTORS SHALL FIELD VERIFY ALL EXISTING CONDITIONS PRIOR TO SUBMITTING THEIR BID. ANY CHANGES REQUIRED DUE TO INCORRECT EXISTING INFORMATION WILL BE THE CONTRACTOR'S RESPONSIBILITY.

ALL EQUIPMENT SHALL BE UNDERWRITER'S LABORATORIES, INC. LABELS (UL) LISTED.

NO COMBUSTIBLE MATERIALS SHALL BE INSTALLED IN THE CEILING PLenum. ALL EQUIPMENT AND MATERIALS INSTALLED IN THE PLenum CEILING AREAS SHALL BE APPROVED FOR THE PURPOSE BY UL AND THE APPLICABLE CODE AUTHORITY.

NO CONDUITS SHALL BE INSTALLED IN THE FLOOR SLAB, SAW CUTTING THE SECOND LEVEL FLOOR SLAB IS PROHIBITED. ONLY CORE-DRILLING IS PERMITTED WITH THE PERMISSION OF THE LANDLORD. CONDUIT ON THE FIRST LEVEL SLAB SHALL BE ROUTED UNDERGROUND AND NOT IN THE SLAB.

PROVIDE ALL TEMPORARY WIRING AS REQUIRED WITHIN THE PREMISES. PROVIDE ALL REQUIRED SERVICES, PANELS, DISCONNECT MEANS, TRANSFORMERS AND OVERCURRENT PROTECTION. COMMON AREA OUTLETS, PANELS, ETC. SHALL NOT BE USED FOR TENANT TEMPORARY WIRING. PROVIDE TEMPORARY WIRING WITH GROUND FAULT PROTECTION AS REQUIRED BY CODE AND LOCAL JURISDICTIONAL AUTHORITY.

### KEYED NOTES

- EXIT LIGHTS, UNLESS NOTED OTHERWISE MOUNT ON WALL AT 12'-0" WHEN CEILING IS NOT PRESENT OR CEILING IS GREATER THAN 12'-0" IN HEIGHT. WHEN CEILING IS 12'-0" OR LESS IN HEIGHT, MOUNT ON CEILING CENTERED ABOVE DOOR OPENING. CONNECT TO UN-SWITCHED LEG OF CIRCUIT.
- EMERGENCY/NIGHT LIGHTS ARE SHOWN HATCHED. CONNECT TO UN-SWITCHED LEG OF LIGHTING CIRCUITS SERVING ADJACENT AREAS AS SHOWN ON DRAWINGS. DO NOT SWITCH. (TYP.)
- AUDIO SPEAKER SYSTEMS: REFER TO AUDIO/VISUAL SCHEDULE ON SHEET E21 FOR SPEAKER SPECIFICATION.
- STORE SIGN: SEE ARCH. DRAWINGS FOR ELEVATION. PROVIDE DISCONNECTING MEANS AS REQUIRED. CONTROLLED BY TIME CLOCK.
- LIGHT FIXTURE AT CASH WRAP CENTER PORTION BY MILLWORK FIXTURE CONTRACTOR SWITCH WITH 'N' FIXTURES.
- NEW SWITCH BANK: PROVIDE A LIGHTING SWITCH FOR EACH LIGHTING CIRCUIT AS REQUIRED. ENGRAVE NAMEPLATE AS FOLLOWS: SALES LTG. 1, SALES LTG. 2, DISPLAY LTG., STOCKROOM LTG. SEE SWITCH BANK DETAIL.
- PRODUCE BI-LEVEL SWITCHING BY SWITCHING EVERY OTHER LUMINAIRE IN A CHECKER BOARD PATTERN. 50% ON '9a' AND 50% ON '9b', TYP.
- A TOTAL OF THREE 'P' FIXTURES ARE MOUNTED IN EACH SHELVING UNIT. REFER TO ARCHITECTURAL ELEVATIONS AND DETAILS FOR MOUNTING.
- PROVIDE 900W CURRENT LIMITER DEVICE FOR TRACK LIGHTING. INSTALL AT THE BEGINNING OF THE TRACK LIGHTING CIRCUITRY. INSTALL PER MANUFACTURER'S RECOMMENDATIONS.
- PROVIDE 900W CURRENT LIMITER DEVICE FOR TRACK LIGHTING. INSTALL AT THE BEGINNING OF THE TRACK LIGHTING CIRCUITRY. INSTALL PER MANUFACTURER'S RECOMMENDATIONS.

### LIGHT FIXTURE SCHEDULE

MARK	MANUFACTURER	CATALOG NO.	NO.	LAMP TYPE	VOLTS	WATTS/LUMINAIRE	MOUNTING	ACCESS & NOTES
A	PHILIPS DAYBRITE	T82-UNV-11-EB (GEN) (DYB)	1	PHILIPS 1478/48-35202 IF 10/1 (46831-4)	120	14	CHAIN	12,3,7,8
B	AMERLUX	PROD-4U-20-LED-E-BT-24-TL1-120-3000 (GEN) (A*0)	1	LED (INCLUDED)	120	40	TRACK	A,1,8,1
C	AMERLUX	HORNET-HP-H-A4-18-LED-E-BT-11-120-FL-CRISP (GEN) (A*0)	1	LED (INCLUDED)	120	18	TRACK	A,1,8,1
D	PHILIPS LIGHTOLIER	N82-UNV-11-EB (GEN) (DYB)	1	PHILIPS 1478/48-35202 IF 10/1 (46831-4)	120	14	CLOUD	12,3,6,8
EM	EXITRONIX	LED-30 (GEN) (EX)	2	LED (INCLUDED)	120	22	WALL/EMERG.	12,3,8,9
J	TEXAS FLUORESCENTS	VAN-211-MV-8U-C (GEN) (T*0)	2	PHILIPS 8578/24-35202 IF 10/1 (45202-3)	120	11	WALL	12,8
K	8PKCAR	CH23-B11-UNV-AR130-MATT BLACK (GEN) (8*1)	1	PHILIPS 10578/36-35202 IF 10/1 (45202-2)	120	10.5	WALL	12,3,4,8,10
L	NITONE	8663RP (GEN) (BRN)	1	TOP LED 3A127K	120	25	RECESSED	12,8
M	AMERLUX	HDL-HP-R-A4-18-LED-120 HDL-HP-R-A4-M85-MPL-CRISP (GEN) (A*0)	1	LED (INCLUDED)	120	18	RECESSED	
N	HI-LITE MFG. CO./INC	H-C9U-96-CLR-1-21H-8YC (GEN) (HL)	1	FEIT A18/LED	120	10	PENDANT	12,3,8
P	SOLAIS	C8-36-D-30K-1200	3	LED (INCLUDED)	120	42	SURFACE	12,3,8
R	PHILIPS DAYBRITE	2LP3GA-23U6-33AL-UNV-11-EB (GEN) (DYB)	1	PHILIPS 16578/24-35202 IF 6/1 (45202-1)	120	31	RECESSED	12,3,8
T	PHILIPS DAYBRITE	T82-UNV-11-EB-850V (GEN) (DYB)	1	PHILIPS 1478/48-35202 IF 10/1 (46831-4)	120	14	HANGERS	12,3,7,8
X	EXITRONIX	VEX-U-8P-18-BL (90 MINUTE BATTERY BACK-UP)	1	LED (INCLUDED)	120	3	SURFACE	1,8,9
Z	PHILIPS DAYBRITE	2LP3GA-23U6-R-33AL-UNV-11-EB-85 (GEN) (DYB)	1	PHILIPS 16578/24-35202 IF 6/1 (45202-1)	120	31	RECESSED	12,3,8,9

### ELECTRICAL SYMBOLS (NOT ALL SYMBOLS USED)

SYMBOL	DESCRIPTION	SYMBOL	DESCRIPTION
[Symbol]	RECESSED 2'X2' LAY-IN CENTER INDICATES TYPE, CROSS-HATCHED INDICATES NIGHT LIGHT	[Symbol]	WIRING CONCEALED IN CEILING OR WALL
[Symbol]	CHAIN HANGING LETTER INDICATES TYPE, CROSS-HATCHED INDICATES NIGHT LIGHT	[Symbol]	WIRING CONCEALED IN FLOOR
[Symbol]	EMERGENCY FIXTURE LETTER INDICATES TYPE	[Symbol]	CEILING MOUNTED/WALL MOUNTED/FLOOR MOUNTED
[Symbol]	RECESSED DOWNLIGHT, LETTER INDICATES TYPE	[Symbol]	DUPLEX RECEPTACLE 3W/2A/125V GROUNDING TYPE
[Symbol]	TRACK LIGHTING, LETTER INDICATES TYPE, LETTER INDICATES AIMING, IF ANY	[Symbol]	CEILING MOUNTED/WALL MOUNTED/FLOOR MOUNTED
[Symbol]	TRACK MOUNTED FLUORESCENT LIGHTING, LETTER INDICATES TYPE	[Symbol]	QUADRUPLEX RECEPTACLE 3W/2A/125V GROUNDING TYPE
[Symbol]	EXIT SIGN WALL-MOUNTED/CEILING MOUNTED, LETTER INDICATES TYPE, DIRECTIONAL ARROWS AS SHOWN	[Symbol]	DUPLEX RECEPTACLE
[Symbol]	SINGLE POLE TOGGLE SWITCH: 20A, 120/277V	[Symbol]	ABOVE COUNTER/GROUND FAULT INTERRUPTER
[Symbol]	JUNCTION BOX	[Symbol]	DUPLEX RECEPTACLE/BELOW DRAWER/ISOLATED GFI
[Symbol]	HOMERUN TO PANELBOARD AS NOTED. ONE CIRCUIT PER ARROWHEAD. CIRCUIT NUMBERS SHOWN NEAR ARROWHEAD 20A BREAKER EACH CIRCUIT UNLESS NOTED. ONE CONDUIT PER HOMERUN, SIZE AS REQUIRED. #2 CU W/INSULATION UNLESS NOTED. NEUTRAL AND GROUND FOR EACH HOMERUN	[Symbol]	TELEPHONE/DATA OUTLET
[Symbol]		[Symbol]	DISCONNECT SWITCH, 30A UNLESS NOTED FUSIBLE IF FUSE DESCRIPTION IS SHOWN. VOLTAGE RATING AND NUMBER OF POLES AS REQUIRED
[Symbol]		[Symbol]	THERMOSTAT
[Symbol]		[Symbol]	AUDIO SPEAKER
[Symbol]		[Symbol]	FIRE ALARM STROBE
[Symbol]		[Symbol]	FIRE ALARM HORN STROBE
[Symbol]		[Symbol]	DUCT MOUNTED SMOKE DETECTOR
[Symbol]		[Symbol]	SMOKE DETECTOR
[Symbol]		[Symbol]	FIRE ALARM PULL STATION
[Symbol]		[Symbol]	OCCUPANCY SENSOR

- ACCESSORIES:  
A. ALL NECESSARY LITESPAN BRAND TRACK 6004BK, 6048BK, 6048BK, 1680, AND 1681 - PROVIDED BY GENESCO AND INSTALLED BY GENERAL CONTRACTOR.
- NOTES:  
1. THERE SHALL BE NO SUBSTITUTIONS FOR DESIGNATED FIXTURE TYPES. FIXTURES SHALL BE SUBMITTED EXACTLY AS SPECIFIED ON SCHEDULE.  
2. THERE SHALL BE NO SUBSTITUTIONS FOR DESIGNATED LAMP TYPES.  
3. DESIGNATED FIXTURES SHALL HAVE ENERGY SAVING BALLASTS.  
4. PAINT FIXTURE TO MATCH WALL COORDINATE WITH ARCHITECTURAL SHEETS.  
5. FIXTURE SHALL BE SUSPENDED TO A HEIGHT OF 8'-0". SHALL PROVIDE 1/2" RIGID CONDUIT STEEL REQUIRED.  
6. LAMPS SHALL HAVE GEL BEVELED RECESSED CEILING PANEL ISOMETRIC.  
7. SUSPEND FIXTURE TO 18" ABOVE TOP STOCKROOM SHELVING. REFER TO ARCHITECTURAL SHEETS FOR SHELVING HEIGHT.  
8. FIXTURES SHALL BE PROVIDED BY GENESCO AND INSTALLED BY GENERAL CONTRACTOR.  
9. FIXTURES WITH EMERGENCY BATTERY AND BALLAST AS REQUIRED BY MANUFACTURER.  
10. REFER TO ARCHITECTURAL FIXTURE DETAIL FOR MOUNTING.  
11. REFERENCE ARCHITECTURAL SHEETS FOR MOUNTING.  
12. PROVIDE COLORED LAMPS (BLUE, GREEN, YELLOW, RED, ORANGE) IN A RANDOM PATTERN. RE: ARCHITECTURAL RCP FOR MORE INFORMATION.  
13. PROVIDE ONE SOLAIS (19-50MV480P) POWER SUPPLY PER SECTION OF WALL SHELVING. CONTRACTOR TO PROVIDE CONDUIT AND PLUGS AS REQUIRED. RE: ARCHITECTURAL DRAWINGS.  
14. WHEN EXISTING FIXTURE IS CERAMIC METAL HALIDE, USE LED, RETRO FIT KIT.

Architect:

Kevin L. Cooper Architect

316 South 1st Street  
Rogers, AR 72756  
(479) 633-8181 fax (479) 633-9204

Engineer/Other:



**CORE STATES GROUP**  
1700 Industrial Dr.  
Rogers, AR 72756  
Phone (479) 986-4400  
Fax (479) 986-4401

Owner:

**GENESCO**



GENESCO CONSTRUCTION DIVISION  
GENESCO PARK, SUITE 604  
P.O. BOX 731  
NASHVILLE, TENNESSEE 37202-0731  
615-367-7003 FAX: 615-367-7845

Project:

**JOURNEYS**

SPACE # 1540  
WESTLAND MALL

HIALEAH, FLORIDA

Sheet Contents:  
LIGHTING PLAN

Drawing Date:

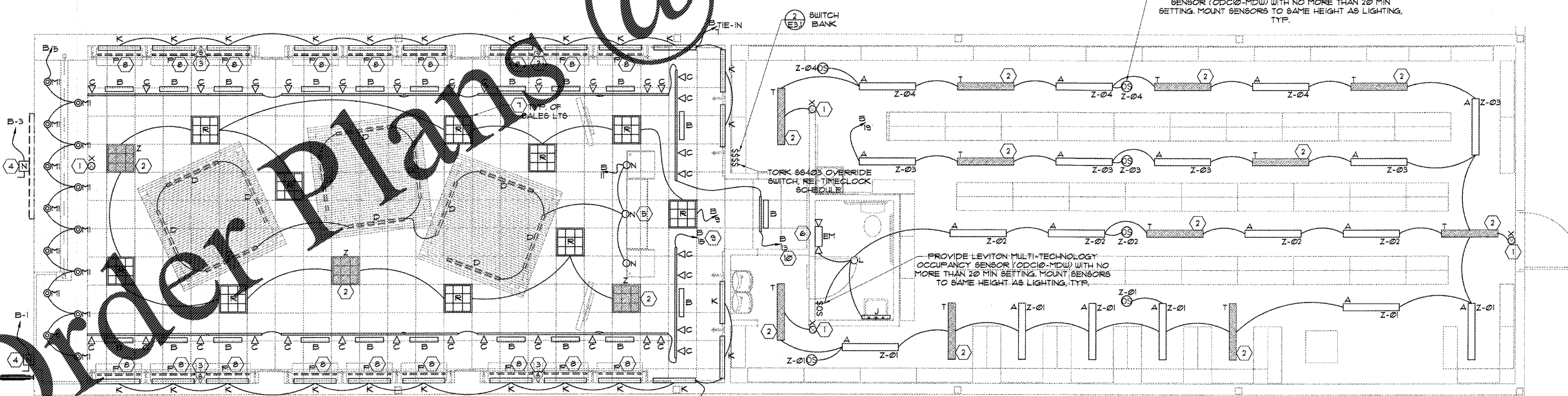
Drawn By: MRS  
Checked By: ASW  
Revisions:

Date: 03/08/2017

E1.1

Copyright © 2017

Order Plans @



1 LIGHTING PLAN  
1/4" = 1'-0"