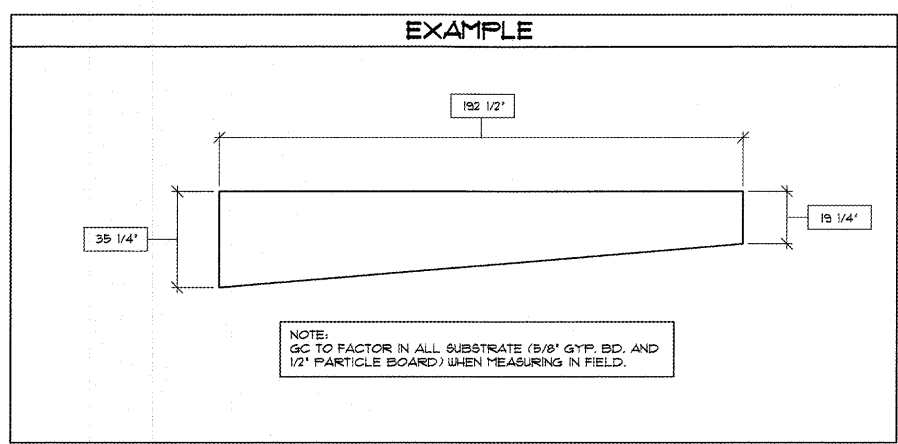


**JOURNEYS**  
 ↓ ↑

AFTER EMAILING THE COMPLETED 'MOZ' PANEL VERIFICATION SHEET TO [contactus@resourcedesign.net](mailto:contactus@resourcedesign.net), PLEASE CALL (479-633-8181 x204) TO CONFIRM THAT EMAIL WAS RECEIVED BY RESOURCE DESIGN.

Kevin L. Cooper Architect  
 FL LICENSE #AR-0017120  
 316 South 1st Street  
 Rogers, AR 72756  
 (479) 633-8181 fax (479) 633-9204

Engineer/Other:



**FIELD VERIFICATION WORK SHEET**

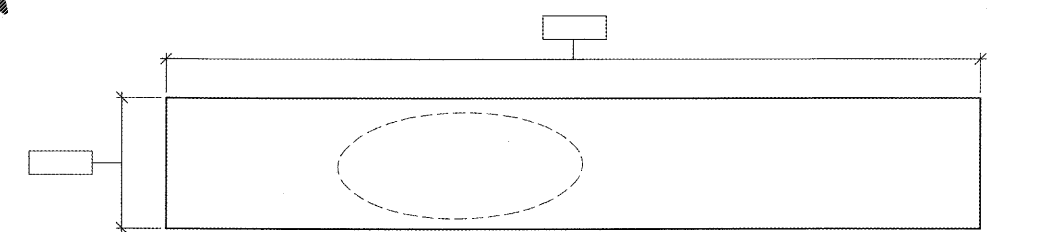
1. GENERAL CONTRACTOR TO FIELD VERIFY ALL STOREFRONT PANEL DIMENSIONS AS INDICATED BELOW. CONTACT ARCHITECT PRIOR TO MEASURING TO DISCUSS THE PROCESS.
2. IF THE PANEL CONFIGURATION DIFFERS SIGNIFICANTLY FROM WHAT IS INDICATED, CONTACT ARCHITECT BEFORE PROCEEDING.
3. IN ADDITION TO 'JPG' PHOTOS OF THIS SHEET, PLEASE PROVIDE PHOTOS OF THE STOREFRONT (BOTH MALL AND SALES AREA SIDES).
4. UPON COMPLETION OF ALL FIELD VERIFIED DIMENSIONS, RETURN THIS DOCUMENT (VIA SCANNED "PDF") TO RESOURCE DESIGN: [contactus@resourcedesign.net](mailto:contactus@resourcedesign.net) (479-633-8181 X204)
5. AFTER EMAILING THE COMPLETED 'MOZ' PANEL VERIFICATION SHEET TO [contactus@resourcedesign.net](mailto:contactus@resourcedesign.net), PLEASE CALL (AT NUMBER ABOVE) TO CONFIRM THAT EMAIL WAS RECEIVED BY RESOURCE DESIGN.

GENESCO STORE #: JY-1451  
 CONTRACTOR:  
 PHONE:  
 FIELD VERIFIED BY:  
 DATE:

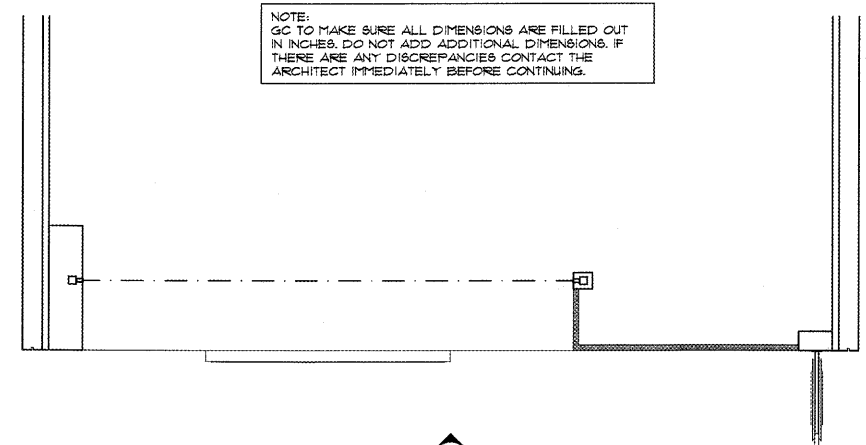
NOTE:  
 PLEASE MAKE SURE THIS INFO IS FILLED OUT COMPLETELY

SPACE #1540 LEVEL 1/2  
 WESTLAND MALL  
 HIALEAH, FLORIDA

**WWW.LDILine.com**



2 STOREFRONT ELEVATION 3/8"=1'-0"



1 BULKHEAD PLAN 3/8"=1'-0"

**Order Plans @**

Owner:

**GENESCO**



GENESCO CONSTRUCTION DIVISION  
 GENESCO PARK, SUITE 604  
 P.O. BOX 731  
 NASHVILLE, TENNESSEE 37202-0731  
 615-367-7003 FAX: 615-367-7845

Project:

**JOURNEYS**  
 ↓ ↑

SPACE # 1540  
 WESTLAND  
 MALL

HIALEAH,  
 FLORIDA

Sheet Contents:  
**MOZ PANELS**

Drawing Data:

Drawn By: JTU  
 Checked By: KLC  
 Revisions:

Dwg Name: GJO-16-231 e2.dwg  
 Date: 08-08-17  
 Sheet: 10 of 14

**A5.3**

Copyright © 2017