

Order Plans

@ WWW.DIline.com

METAL PANEL COLOR LEGEND

	TANGERINE 'A' (MP-1)
	LILAC (PURPLE) (MP-2)
	SAGE (GREEN) (MP-3)

STOREFRONT METAL PANEL COLOR LEGEND

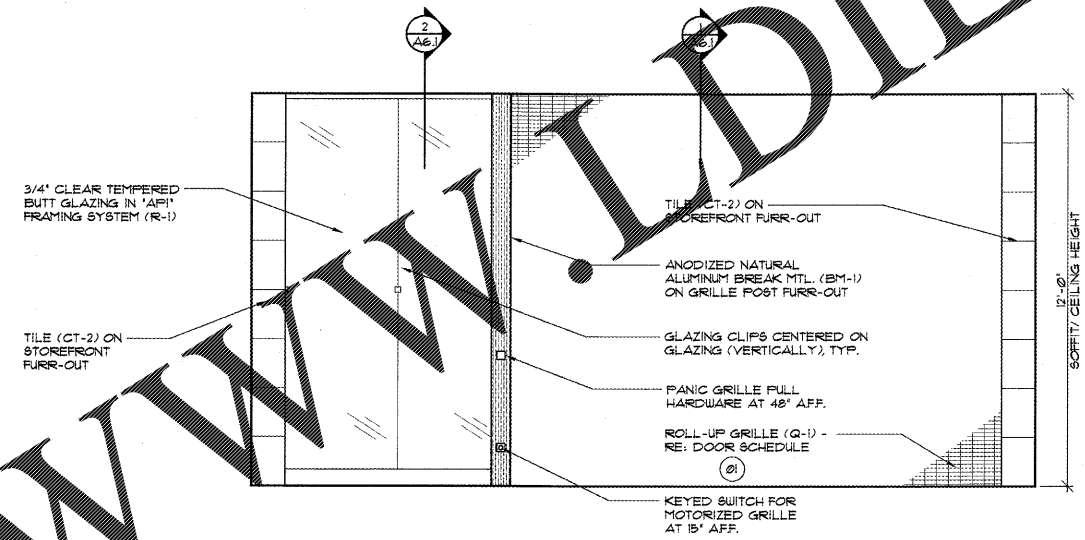
'A' PANELS	TANGERINE 'A' (MP-1)
'B' PANELS	LILAC (MP-2)
'C' PANELS	SAGE (MP-3)
'D' PANELS	TANGERINE 'A' (MP-1)
'E' PANELS	LILAC (MP-2)
'F' PANELS	SAGE (MP-3)
'G' PANELS	TANGERINE 'A' (MP-1)

NOTE:
REFER TO WORK SHEET A5.3 FOR FIELD VERIFIED MOZ PANEL SIZE AND LOG.

NOTE:
GENERAL CONTRACTOR TO BEGIN MOZ METAL PANEL INSTALLATION AT CENTERLINE OF STOREFRONT TYPICAL - DO NOT START AT EDGES.

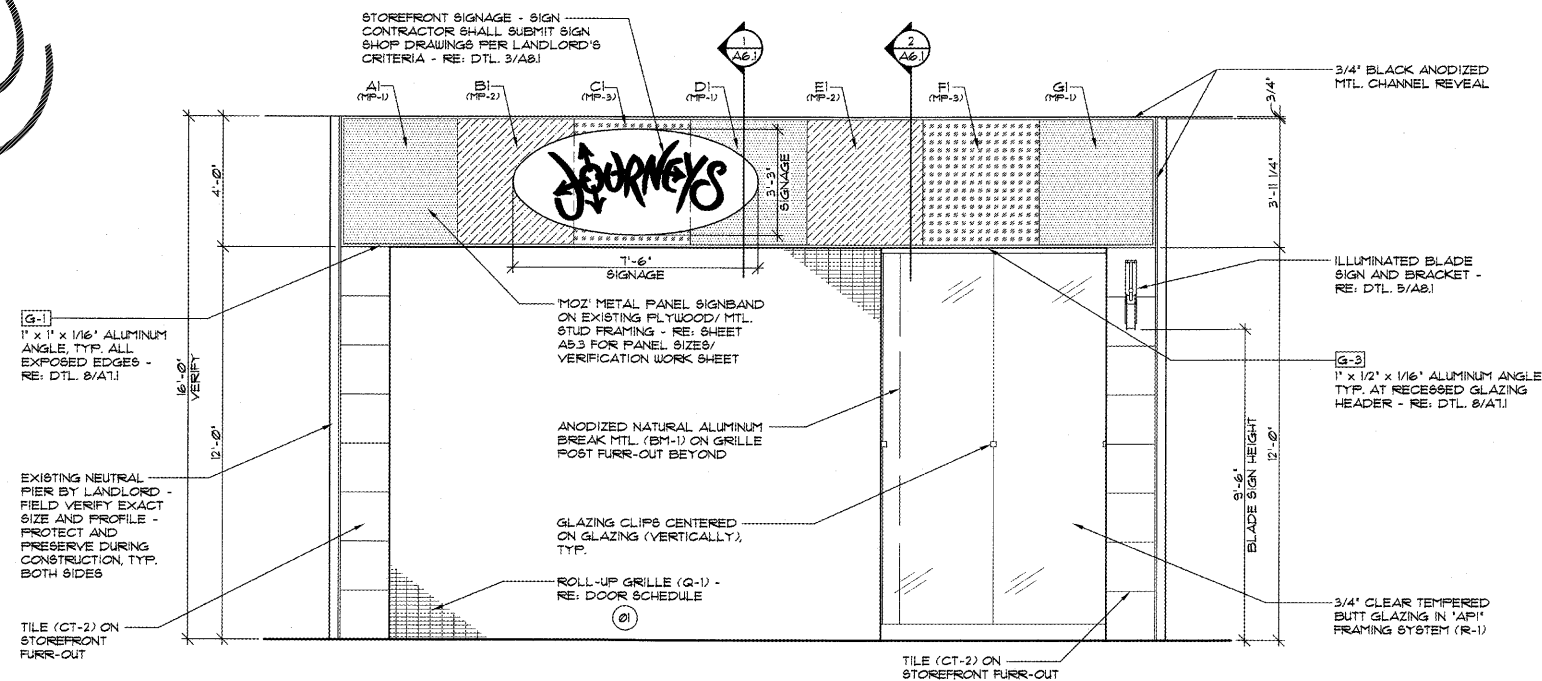
ALL STOREFRONT FINISHES SHALL HAVE A MIN. CLASS 1 FLAME SPREAD RATING. MOZ' METAL PANELS ARE NON-COMBUSTIBLE.

NOTE:
CONTRACTOR SHALL GRIND SMOOTH ALL SHARP EDGES ON WIRE GRID PANELS.



2 INTERIOR ELEVATION

3/8"=1'-0"



1 STOREFRONT ELEVATION

3/8"=1'-0"

Architect:
Kevin L. Cooper Architect
FL LICENSE #AR-0017120
316 South 1st Street
Rogers, AR 72756
(479) 633-8181 fax (479) 633-9204

Engineer/Other:

Owner:
GENESCO
GENESCO CONSTRUCTION DIVISION
GENESCO PARK, SUITE 604
P.O. BOX 731
NASHVILLE, TENNESSEE 37202-0731
615-367-7003 FAX: 615-367-7845

Project:
JOURNEYS
SPACE # 1540
WESTLAND MALL
HIALEAH, FLORIDA
Sheet Contents:
STOREFRONT / INTERIOR ELEVATIONS

Drawing Data:
Drawn By: JTW
Checked By: KLC
Revisions:
Dwg Name: GJO-16-231.edwg
Date: 08-08-11
Sheet: 8 of 14

A5.1

Copyright © 2011