

### LIGHTING FIXTURE SCHEDULE

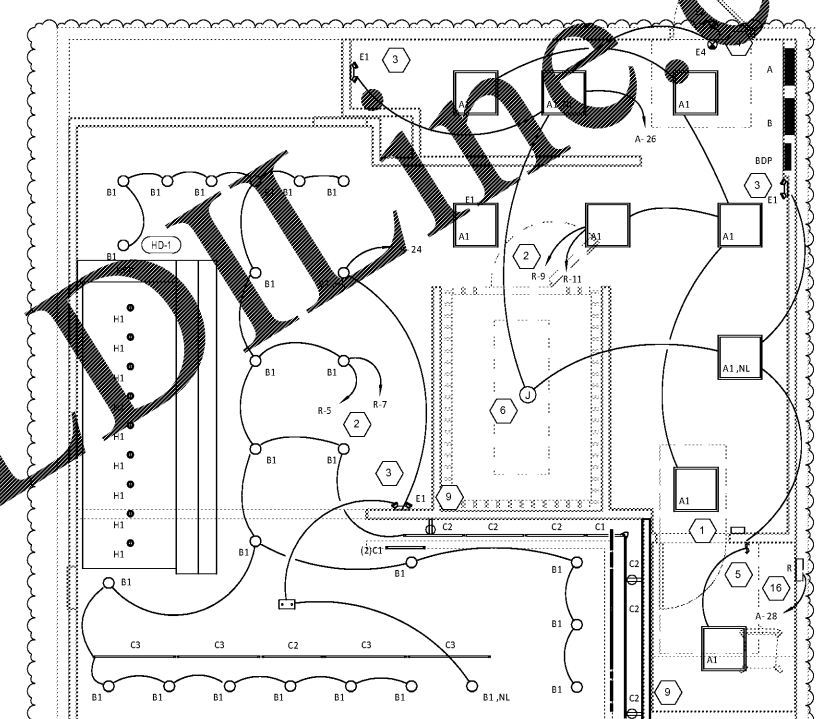
TAG	QUANTITY	TYPE	MOUNT	FURNISHED BY	INSTALLED BY	MANUFACTURER	MODEL	LAMP(S)	VOLTS	WATTS	SPECIAL REQUIREMENTS
A1	9	2x2 LENSED TROFFER	LAY-IN	TLG	GC	CRESCENT	22G6417FSA1B4YK3	(4)F017/830/ECO	120	68	
B1	26	RECESSED 6IN CAN LIGHT	CEILING	TLG	GC	NORA LIGHTING	NHC 6G24ATFL with NTM-57W/M1 Trim	(1) 17W ECOSTORY ECO-PAR38C-17-GU24-27K-25D LED [25'-2700K] W/ GU 24 BASE	120	17	
B2	8	RECESSED 6IN CAN LIGHT	CEILING	TLG	GC	NORA LIGHTING	NHP264EL-NA79C		120	26	
C0	2	LOW PROFILE LED - 1 FT	SURFACE	TLG	GC	HERA LIGHTING	EL/LED/12/WW	INTEGRAL 3000K LED	120	5	FURNISHED WITH COVERS, CONNECTORS, AND ONE HARDWIRE BOX OR CORD/PLUG PER SECTION
C1	4	LOW PROFILE LED - 2 FT	SURFACE	TLG	GC	HERA LIGHTING	EL/LED/22/WW	INTEGRAL 3000K LED	120	9	FURNISHED WITH COVERS, CONNECTORS, AND ONE HARDWIRE BOX OR CORD/PLUG PER SECTION
C2	11	LOW PROFILE LED - 3 FT	SURFACE	TLG	GC	HERA LIGHTING	EL/LED/34/WW	INTEGRAL 3000K LED	120	12	FURNISHED WITH COVERS, CONNECTORS, AND ONE HARDWIRE BOX OR CORD/PLUG PER SECTION
C3	7	LOW PROFILE LED - 4 FT	SURFACE	TLG	GC	HERA LIGHTING	EL/LED/46/WW	INTEGRAL 3000K LED	120	15	FURNISHED WITH COVERS, CONNECTORS, AND ONE HARDWIRE BOX OR CORD/PLUG PER SECTION
C4	12	LOW PROFILE LED - 5 FT	SURFACE	TLG	GC	HERA LIGHTING	EL/LED/59/WW	INTEGRAL 3000K LED	120	18	FURNISHED WITH COVERS, CONNECTORS, AND ONE HARDWIRE BOX OR CORD/PLUG PER SECTION
C7	2	LED CHANNEL LIGHT	SURFACE	TLG	GC	PARADIGM LED	PL-AMC-1715 W/ OPAL LENS AND END CAPS	PL-FLEXSR590-WWW-INT-3000K	120	50	FURNISHED W/ REMOTE MOUNTED DIMMABLE 24V LED DRIVER SIZED FOR CONNECTED LOAD. SEE PLAN FOR LENGTHS.
E1	3	EMERGENCY LIGHT - DUAL HEAD	VARIOUS	TLG	GC	EXITRONIX	LED-90	(2) SPECIAL LED	120	2	90 MINUTE BATTERY BACKUP
E2	4	EXTERIOR REMOTE EMERGENCY LIGHT	VARIOUS	TLG	GC	EXITRONIX	CLED-BL WP WITH PMC 8-1 MOUNTING PLATE	(1) SPECIAL LED	4	1	LOW VOLTAGE REMOTE EMERGENCY LIGHT POWERED BY REMOTE-CAPABLE EXIT SIGN
E4	3	WHITE EXIT SIGN W/ RED LETTERS	VARIOUS	TLG	GC	EXITRONIX	VEX-BP-WB-WH-R6	(1) SPECIAL LED	120	4	90 MINUTE BATTERY BACKUP; FURNISHED WITH UNIVERSAL MOUNT, REMOTE CAPABLE
E7	7	EMERGENCY LIGHT HOOD LIGHT	VARIOUS	TLG	GC	DUAL-LITE	EV2	(2) 1W INTEGRAL LED	120	1	90 MINUTE BATTERY BACKUP
H1	9	HOOD LIGHT	SURFACE	THS/TLG	GC	FURNISHED WITH HOOD		(1) CFZ3EL/MIM/8Z7	120	23	INSTALL LAMP FURNISHED SEPARATELY BY LIGHTING SUPPLIER

#### LIGHTING FIXTURE SCHEDULE NOTES

- FLOURESCENT LAMPS NOT INCLUDED WITH THE FIXTURE ARE TO BE MANUFACTURED BY SYLVANIA UNLESS OTHERWISE NOTED. PHILIPS FLOURESCENT LAMPS WILL BE AN ACCEPTABLE ALTERNATE.
- SEE THE ARCHITECTURAL REFLECTED CEILING PLAN FOR EXACT LIGHT LOCATIONS.
- SEE THE ARCHITECTURAL LIGHTING DETAILS FOR FIXTURE CONSTRUCTION DETAILS.

#### ABBREVIATIONS

- AFF ABOVE FINISHED FLOOR  
 AFG ABOVE FINISHED GRADE  
 C CONDUIT  
 G GROUND  
 GFCI GROUND FAULT CIRCUIT INTERRUPT  
 IG ISOLATED-GROUND  
 JB JUNCTION BOX  
 NL NIGHT LIGHT  
 S SURFACE MOUNTED  
 WP WEATHERPROOF
- CO2AS TENANT'S CO2 ALARM SUPPLIER  
 GC GENERAL CONTRACTOR  
 HES TENANT'S HVAC EQUIPMENT SUPPLIER  
 TAB TENANT'S TEST AND BALANCE VENDOR  
 TCC TENANT'S CABLING CONTRACTOR  
 KES TENANT'S KITCHEN EQUIPMENT SUPPLIER  
 HS TENANT'S HOOD SUPPLIER  
 TLS TENANT'S LIGHT/LAMP SUPPLIER  
 TMB TENANT'S MENU BOARD SUPPLIER  
 TMS TENANT'S MILLWORK SUPPLIER  
 TP TENANT'S PHONE SUPPLIER  
 TRS TENANT'S RAILING SUPPLIER  
 TSV TENANT'S SIGN VENDOR  
 WCS TENANT'S WALK-IN COOLER SUPPLIER



#### PLAN NOTES

- INSTALL LIGHTING CONTROL MODULE LCD DIGITAL SWITCH.
- CONNECT LIGHTING CIRCUIT TO RELAY CIRCUITS SHOWN THROUGH RELAY PANEL. ALTERNATE FIXTURES BETWEEN RELAY CIRCUITS SHOWN TO ACHIEVE BE LEVEL LIGHTING CONTROL.
- WALL MOUNT THE EMERGENCY LIGHT FIXTURE AT 48" BELOW THE CEILING UNLESS NOTED OTHERWISE.
- VERIFY MOUNTING HEIGHT OF EXIT SIGN PRIOR TO INSTALL. EXIT SIGN MUST BE VISIBLE FROM AREA SERVED AFTER BUILDING SYSTEMS HAVE BEEN INSTALLED.
- PROVIDE DOUBLE-POLE SINGLE-THROW SWITCH FOR CONTROL OF OFFICE LIGHT AND RESTROOM EXHAUST FAN.
- INSTALL LIGHT FIXTURES FURNISHED WITH THE WALK-IN COOLER. PROVIDE UNSWITCHED CONDUIT FOR LIGHTING CIRCUIT TO WALK-IN COOLER LIGHT FIXTURE BOX AND FROM LIGHT FIXTURES TO EXTERIOR AND EXTERIOR CONDUITS WHERE THEY PASS THROUGH THE WALK-IN COOLER ENVELOPE TO THE NEC.
- PROVIDE (2) 1" CONDUITS FOR UNDER-SHELF LIGHTING AS SHOWN. CONNECT TO SWITCHED LEG OF THE KITCHEN LIGHTING CIRCUIT. SEE DIMMING SCHEDULE SHEET E300 FOR RECEPTACLE LOCATIONS, HEIGHTS, AND INSTALL RECEPTACLES IN A HORIZONTAL ORIENTATION.
- INSTALL RECEPTACLE AS SHOWN ON THE ARCHITECTURAL RCP PER THE ARCHITECTURAL INSTRUMENT DETAIL TYPICAL.
- INSTALL WALL MOUNTED OCCUPANCY SENSOR FURNISHED BY LIGHTING SUPPLIER. ADJUST OCCUPANCY SENSOR TO PROVIDE AUTOMATIC OFF OPERATION WITH A FIXED TIMER OF 30 MINUTES AND WITH BOTH THE PASSIVE INFRARED AND ULTRASONIC SENSORS ENABLED.
- INSTALL LIGHTING CONTROL SYSTEM PER DETAIL Z7H5 SHEET.
- INSTALL LED DRIVER FURNISHED WITH THE LED STRIP LIGHTS CONCEALED BELOW THE BEVERAGE COUNTER AND CIRCUITED AS SHOWN. PROVIDE LOW VOLTAGE WIRING FROM LED DRIVER TO THE TWO C7 LIGHT FIXTURES IN THE PANEL WALL SYSTEM AS SHOWN. SEE ARCHITECTURAL DETAILS FOR MOUNTING LOCATIONS FOR THE TWO C7 LIGHT FIXTURES.

#### ELECTRICAL GENERAL NOTES

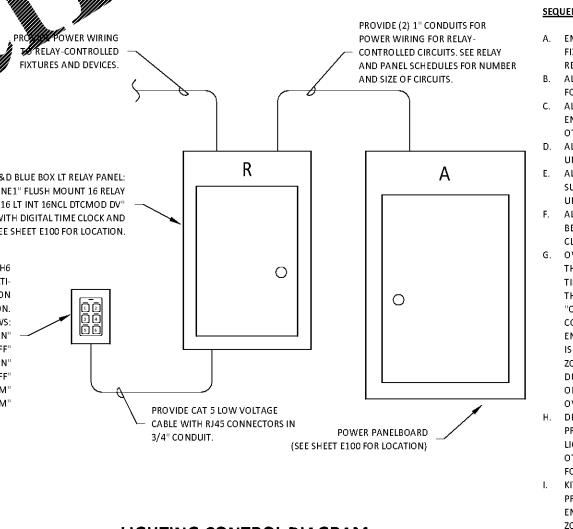
- GENERAL NOTES APPLY TO ELECTRICAL SHEETS.
- ELECTRICAL WORK SHALL BE DONE IN ACCORDANCE WITH THE ELECTRICAL CODE AND IN ACCORDANCE WITH THE AUTHORITY HAVING JURISDICTION. SEE SHEET A000 FOR THE PREVAILING LIGHTING CODES.
- WIRING SHALL BE (2) #12, #12 G IN 3/4" C UNLESS NOTED OTHERWISE.
- INDIVIDUAL CONDUIT HOME RUNS SHOWN SHALL NOT BE CONSOLIDATED.
- CIRCUIT EMERGENCY EGRESS LIGHTS, ILLUMINATED EXIT SIGNS, AND NIGHT LIGHTS AHEAD OF LOCAL SWITCHING.
- INSTALL WALL SWITCHES AT 48" AFF TO CENTER OF SWITCH AND RECEPTACLES AT 18" AFF TO CENTER OF RECEPTACLE UNLESS NOTED OTHERWISE.
- INSTALL CONDUIT CONCEALED ABOVE THE CEILING, IN WALLS, OR IN RACEWAYS.
- PROVIDE 1" CONDUIT WITH PULL STRING FROM EACH J-BOX FOR TELEPHONE OR DATA JACKS TO ABOVE OFFICE CEILING. SEE MATERIAL SCHEDULE FOR ALLOWABLE CONDUIT MATERIALS. PROVIDE CONDUITS WITH MINIMAL ELBOWS AND TERMINATE CONDUITS ABOVE OFFICE CEILING WITH CONDUIT BUSHING.
- THE TERM "FURNISH" MEANS SUPPLY AND DELIVER TO THE PROJECT SITE. READY FOR UNLOADING, UNPACKING, ASSEMBLY, INSTALLATION, AND SIMILAR OPERATIONS. THE TERM "INSTALL" DESCRIBES THE OPERATIONS AT THE PROJECT SITE INCLUDING THE ACTUAL UNLOADING, UNPACKING, ASSEMBLY, ERECTING, PROTECTING, ANCHORING, APPLYING, WORKING TO DIMENSION, FINISHING, CURING, FINISHING, CLEANING, AND SIMILAR OPERATIONS. THE TERM "PROVIDE" MEANS TO FURNISH AND INSTALL, COMPLETELY READY FOR THE INTENDED USE.
- DIMENSIONS SHOWN IN ELECTRICAL ELEVATIONS ARE FROM THE WALL-FRAMING UNLESS NOTED OTHERWISE.
- PROVIDE LABELING CALLED FOR IN THE ELECTRICAL DRAWINGS AND UNGRAVED PNEUMATIC PLATES.

#### LIGHTING SYMBOLS

- CONDUIT CONCEALED ABOVE THE CEILING, IN A WALL, OR IN A RACEWAY
- CONDUIT CONCEALED BELOW THE SLAB
- HOME RUN TO PANELBOARD AND CIRCUIT NUMBER SHOWN
- PLAN NOTE: SEE PLAN NOTES LISTED ON THE SAME SHEET FOR NOTE MEANING
- DISCONNECT SWITCH:  
 X = SWITCH RATING  
 Y = FUSE SIZE (N = NON FUSED)  
 Z = NUMBER OF POLES
- JUNCTION BOX
- ELECTRIC PANELBOARD
- GENERAL PURPOSE 1-POLE SWITCH
- MANUAL STARTER WITH PILOT LIGHT
- OCCUPANCY SENSOR ACTIVATED WALL SWITCH (HUBBELL LHM151W - LIGHT-HAWK PIR & US SINGLE CIRCUIT, WHITE)
- NEMA 5-20R DUPLEX RECEPTACLE
- LIGHTING CONTROL MODULE
- MASTER RELAY PANEL

#### MASTER RELAY PANEL SCHEDULE

RELAY NUMBER	CONTROL	DESCRIPTION	LOAD (WATTS)	PANEL CIR.	DIMMING CONTROL
R-1	TIMECLOCK	DINING	361 W	A 22	N/A
R-3	TIMECLOCK	DINING	361 W	A 22	N/A
R-5	TIMECLOCK	KITCHEN	459 W	A 24	N/A
R-7	TIMECLOCK	KITCHEN FAN	187 W	A 24	N/A
R-9	TIMECLOCK	KITCHEN BOH	136 W	A 26	N/A
R-11	TIMECLOCK	KITCHEN BOH	172 W	A 26	N/A
R-13	TIMECLOCK	DINING	361 W	A 22	N/A
R-2	TIMECLOCK	RESTROOM	150 W	A 10	N/A
R-4	TIMECLOCK / PHOTOCELL	SIGNAGE	150 W	A 30	N/A
R-6	TIMECLOCK / PHOTOCELL	SIGNAGE	150 W	A 30	N/A
R-8	SPARE				
R-10	SPARE				
R-12	SPARE				
R-14	SPARE				
R-16	SPARE				



#### SEQUENCE OF OPERATIONS

- EMERGENCY LIGHT FIXTURES, EXIT SIGNS, LOCALLY SWITCHED FIXTURES, AND FIXTURES DESIGNATED AS NIGHT LIGHTS ARE NOT CONTROLLED THROUGH THE RELAY PANEL.
- ALL TIMES NOTED SHALL BE LOCAL TIME AND SHALL AUTOMATICALLY ADJUST FOR DAYLIGHT SAVING'S TIME, IF APPLICABLE.
- ALL KITCHEN LIGHTING CIRCUITS AND RESTROOM EXHAUST FAN CIRCUIT SHALL BE ENERGIZED FROM 7:00AM UNTIL MIDNIGHT AND SHALL BE DE-ENERGIZED AT OTHER TIMES.
- ALL DINING ROOM LIGHTING CIRCUITS SHALL BE ENERGIZED FROM 10:00AM UNTIL MIDNIGHT AND SHALL BE DE-ENERGIZED AT OTHER TIMES.
- ALL SIGNAGE CIRCUITS SHALL BE ENERGIZED FROM ONE (1) HOUR BEFORE SUNSET (AS DETERMINED BY THE RELAY PANEL'S ASTRONOMICAL TIME CLOCK) UNTIL 10:00PM AND SHALL BE DE-ENERGIZED AT OTHER TIMES.
- ALL EXTERIOR LIGHTING CIRCUITS SHALL BE ENERGIZED FROM ONE (1) HOUR BEFORE SUNSET (AS DETERMINED BY THE RELAY PANEL'S ASTRONOMICAL TIME CLOCK) UNTIL MIDNIGHT AND SHALL BE DE-ENERGIZED AT OTHER TIMES.
- OVERRIDES: WHEN ONE OF THE OVERRIDE BUTTONS IS PRESSED (BUTTONS 1-4) THE SYSTEM WILL GO INTO OVERRIDE MODE FOR ONE (1) HOUR, AFTER WHICH TIME THE SYSTEM WILL RETURN TO ITS REGULAR PROGRAM. DURING THIS TIME THE CORRESPONDING LAMP WILL ILLUMINATE ON THE OVERRIDE BUTTON. IF AN "ON" BUTTON IS PRESSED THEN ALL OF THE CONTROLLED FIXTURES IN THE CORRESPONDING ZONE (INTERIOR OR EXTERIOR/SIGNAGE) WILL REMAIN ENERGIZED FOR THE DURATION OF THE OVERRIDE PERIOD. IF AN "OFF" BUTTON IS PRESSED THEN ALL OF THE CONTROLLED FIXTURES IN THE CORRESPONDING ZONE (INTERIOR OR EXTERIOR/SIGNAGE) WILL REMAIN DE-ENERGIZED FOR THE DURATION OF THE OVERRIDE PERIOD. PRESSED AN OVERRIDE BUTTON FOR ONE OF THE ZONES (INTERIOR OR EXTERIOR/SIGNAGE) WILL CANCEL ANY PREVIOUS OVERRIDES FOR THAT ZONE.
- DINING DIMMING: WHEN THE DINING ROOM DIMMING BUTTON (BUTTON 5) IS PRESSED HALF OF THE LIGHTING CIRCUITS IN THE DINING ZONE AND ANY LIGHTING CIRCUITS IN THE DAYLIGHT ZONE SHALL BE DE-ENERGIZED AND THE OTHER HALF OF THE LIGHTING CIRCUITS IN THE DINING ZONE WILL BE ENERGIZED FOR A DURATION OF ONE (1) HOUR.
- KITCHEN DIMMING: WHEN THE KITCHEN DIMMING BUTTON (BUTTON 6) IS PRESSED HALF OF THE LIGHTING CIRCUITS IN THE KITCHEN ZONE SHALL BE DE-ENERGIZED AND THE OTHER HALF OF THE LIGHTING CIRCUITS IN THE KITCHEN ZONE WILL BE ENERGIZED FOR A DURATION OF ONE (1) HOUR.

COPYRIGHT 2017  
 THIS DRAWING IS AN INSTRUMENT OF SERVICE AND AS SUCH REMAINS THE PROPERTY OF CHIPOTLE MEXICAN GRILL, INC. PERMISSION FOR USE OF THIS DOCUMENT IS LIMITED AND CAN BE EXTENDED ONLY BY WRITTEN AGREEMENT WITH CHIPOTLE MEXICAN GRILL, INC.



STORE NO.: 3007  
**PURCELLVILLE**  
 Berlin Turnpike and West Colonial Highway  
 Purcellville, VA 20132

Drawn:	Checked:
FC	RTJ

Project No: 1601065

Revisions:

No.	Date	Description
1	08-24-2017	Owner Revisions

#### ELECTRICAL LIGHTING PLAN

E100

Date of Last Print: 12.19.2016

Order Plans @ www.national-engineering.com