



7885 Madison Road
 Columbus, Ohio 43230
 Phone: (614) 751-9610
 Fax: (614) 552-5240
 Contact: Mike Chapman
 (614) 595-9543
 mchapman@nationalengineering.com

Copyright 2017
 This drawing is an instrument of service and as such remains the property of Chipotle Mexican Grill, Inc. Permission for use of this document is limited and can be extended only by written agreement with Chipotle Mexican Grill, Inc.



CHIPOTLE MEXICAN GRILL, INC.
 1465 WINWOOD SQUARE, SUITE 500
 DENVER, COLORADO 80202
 TELEPHONE: (303) 595-4000
 FAX: (303) 595-4004
 INTERNET: WWW.CHIPOTLE.COM

STORE NO.: 3007
 PURCELLVILLE
 Berlin Turnpike and West Colonial Highway
 Purcellville, VA 20132

Issue Record:
 12.19.2016 Permit Set

Revisions:

Drawn: RTJ
 Checked: RTJ

Project No.: 1601065

Contents:

PLUMBING PLAN WATER & GAS

P100

Date of Last Print: 12.19.2016

PLAN NOTES

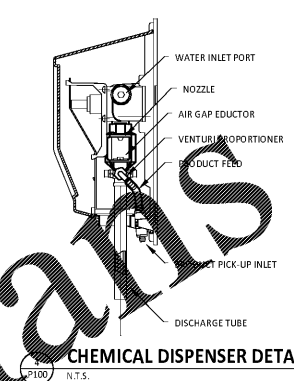
1. CONNECT TO THE EXISTING 2" DOMESTIC WATER SERVICE.
2. PROVIDE 1/2" FILTERED WATER TO THE BAG-IN-BOX SODA CARBONATOR AT 102" AFF. SODA CARBONATOR SHALL HAVE AN INTEGRAL ASSE, 1022-RATED CARBONATED BEVERAGE BACKFLOW PREVENTION DEVICE.
3. PROVIDE WATER HEATER DWH-1 PER DETAIL 1/P300.
4. PROVIDE WATER FILTERS MOUNTED TO WALL PER DETAIL 11/P300. PROVIDE 1/2" SUPPLY PIPES FROM FILTERS TO ICE MAKER AND SODA CARBONATOR AS SHOWN.
5. PROVIDE 1/2" FILTERED WATER TO THE ICE MAKER AT 56" AFF. FINAL CONNECTION TO ICE MAKER SHALL BE A MINIMUM OF 1/2".
6. PROVIDE DOMESTIC WATER ROUGH-INS FOR THE MOP BASIN FAUCET AT 36" AFF. PROVIDE DOMESTIC WATER ROUGH-INS FOR THE CHEMICAL DISPENSER FAUCET (HB-1) AT 64" AFF DIRECTLY ABOVE THE MOP BASIN FAUCET. SEE ARCHITECTURAL ELEVATION FOR DETAIL.
7. CONNECT TO THE EXISTING GAS METER.
8. PROVIDE GAS CONNECTIONS TO THE COOKING EQUIPMENT PER DETAIL 2/P300.
9. SUPPORT THE GAS PIPE ON THE ROOF PER DETAIL 5/P300. WOOD BLOCKING IS NOT AN ACCEPTABLE METHOD OF SUPPORTING THE GAS PIPE.
10. PROVIDE ACCESSIBLE LINE SIZED GAS VALVE, DIRT LEG, AND UNION AT GAS CONNECTION TO THE EQUIPMENT. REFER TO ARCHITECTURAL DRAWINGS FOR PAINTING OF INTERIOR AND EXTERIOR EXPOSED GAS PIPE.
11. PROVIDE DOMESTIC WATER ROUGH-INS FOR THE CHEMICAL DISPENSER FAUCET (HB-1) AT 52" AFF. SEE ARCHITECTURAL ELEVATION FOR DETAIL.
12. PROVIDE DOMESTIC WATER ROUGH-INS FOR THE VICTORY WASH DISPENSER FAUCET (HB-2) AT 52" AFF. SEE ARCHITECTURAL ELEVATION FOR DETAIL.
13. PROVIDE ROUGH-INS TO RESTROOM HAND SINKS AS SHOWN IN DETAIL 3/P300.
14. PROVIDE KITCHEN EQUIPMENT GAS SHUTOFF 6" BELOW THE CEILING PER DETAIL 12/P300.
15. CONNECT CHEMICAL DISPENSER TO HB-1. CHEMICAL DISPENSER HAS AN INTEGRAL AIR GAP AS IS SHOWN IN DETAIL 4/THIS SHEET.
16. PROVIDE ASSE 1016/1070 POINT-OF-USE THERMOSTATIC MIXING VALVE, WATTS LFUSG-B, ON WATER SUPPLY TO KITCHEN HAND SINKS. PROVIDE ANGLE STOP BELOW SINK, FASTEN MIXING VALVE TO WALL, AND MAKE FINAL CONNECTION FROM ANGLE STOPS TO MIXING VALVE AND FROM MIXING VALVE TO FAUCET USING BRAIDED STAINLESS STEEL HOSE. ADJUST MIXING VALVE FOR A DISCHARGE TEMPERATURE OF APPROXIMATELY 110° F.
17. PROVIDE ACCESSIBLE VALVE IN WATER SUPPLY TO FIXTURE AS SHOWN.
18. PROVIDE WATER HAMMER ARRESTOR ON WATER SUPPLY PIPE TO WATER CLOSET.
19. HOLD EXPOSED DOMESTIC WATER PIPES TIGHT TO THE DECK AND TIGHT TO THE DEMISING WALL AS SHOWN. PAINT THE PIPE INSULATION TO MATCH THE ROOF DECK.
20. PROVIDE DOMESTIC WATER PIPES ABOVE THE RESTROOMS BELOW THE TOP OF THE PLYWOOD BOX ELEMENT UNLESS NOTED OTHERWISE.
21. PROVIDE AN ACCESSIBLE MAIN DOMESTIC WATER SHUTOFF VALVE ABOVE LAY-IN CEILING AS SHOWN. VALVE SHALL BE 12" ABOVE THE TOP OF THE LAY-IN CEILING. PERMANENTLY INSTALL THE "WATER SHUTOFF" SIGN TO THE CEILING GRID BELOW THE VALVE.
22. PROVIDE GAS CONNECTION TO THE RICE COOKER PER DETAIL 9/P300.
23. PROVIDE GAS ROUGH-IN TO FRYER BEHIND RICE COOKER TABLE SO THAT VALVES AND DIRT LEG ARE ACCESSIBLE ONCE FRYER IS SECURED INTO PLACE.
24. COOKING EQUIPMENT WILL OPERATE ON PROPANE GAS. PROVIDE APPROPRIATE EQUIPMENT.
25. WATER HEATER WILL OPERATE ON PROPANE GAS. PROVIDE APPROPRIATE EQUIPMENT.
26. MECHANICAL EQUIPMENT ON ROOF WILL OPERATE ON PROPANE GAS. PROVIDE APPROPRIATE EQUIPMENT.

CONNECTED PROPANE LOAD

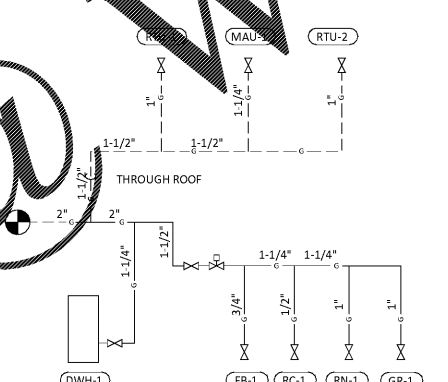
FIXTURE	TAG	MBH	EQUIVALENT LENGTH FROM METER [FT]
GAS TANK-TYPE WATER HEATER	DWH-1	199	35
FRYER	FB-1	95	60
GRIDDLE	GR-1	107	65
MAKEUP AIR UNIT	MAU-1	225	75
RICE COOKER	RC-1	35	35
RANGE	RN-1	192	120
ROOFTOP UNIT	RTU-1	120	100
ROOFTOP UNIT	RTU-2	180	100
Grand total		1153	MAX

NOTES:

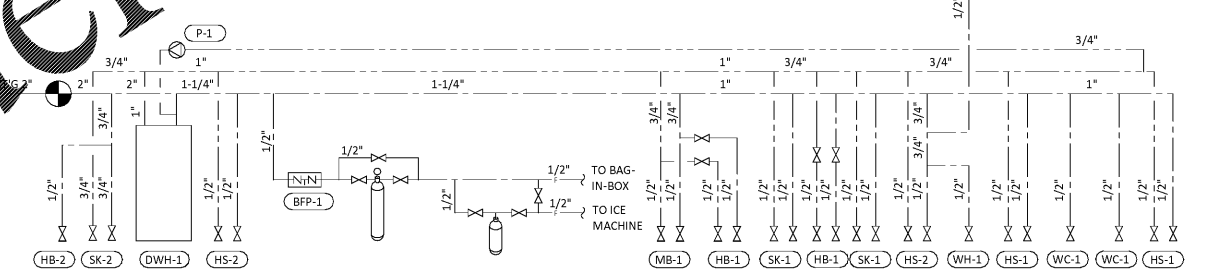
1. PRESSURE REQUIRED AFTER METER TO BE 1/2" W.C.
2. DISTANCES ARE APPROXIMATE



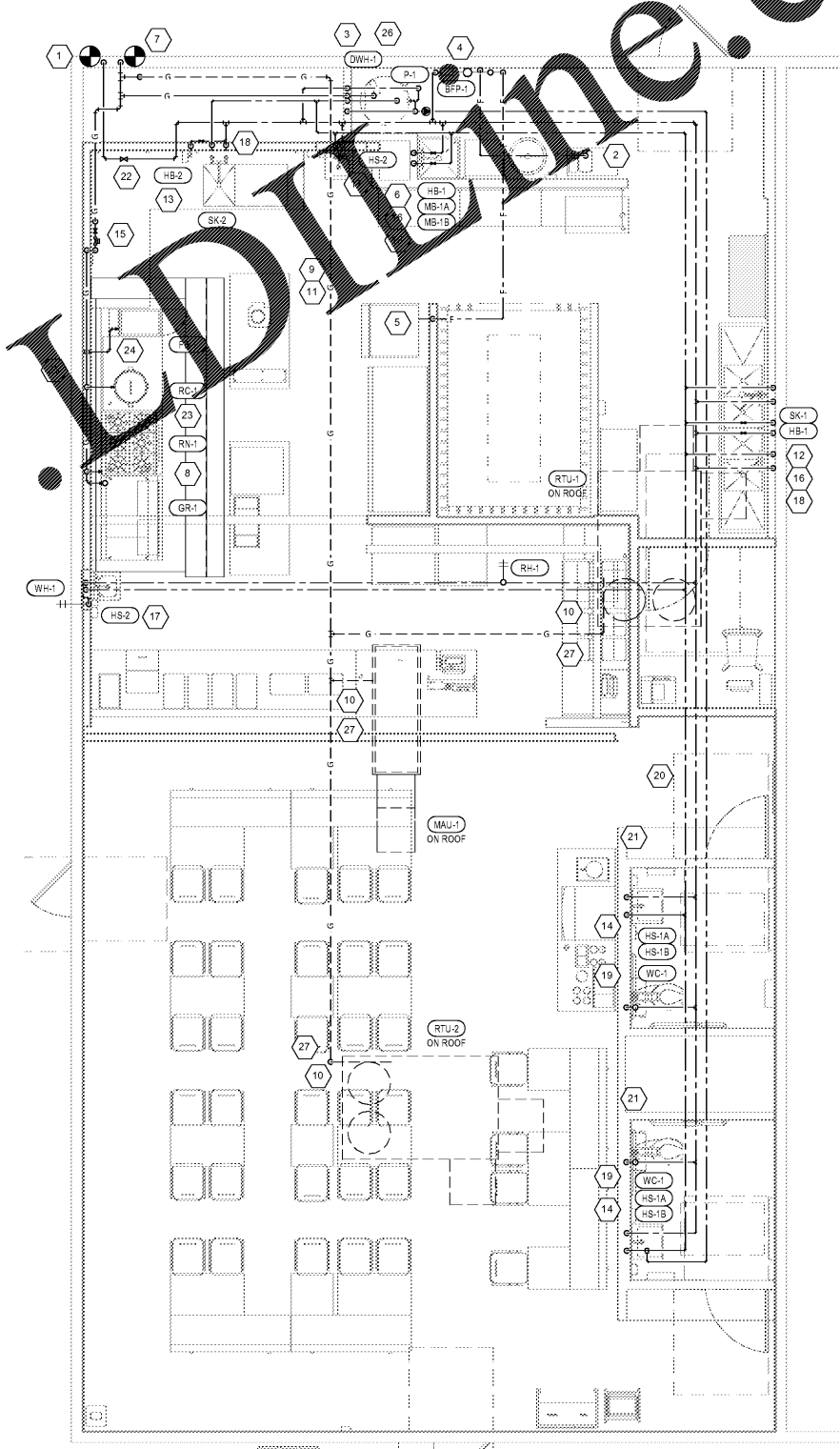
CHEMICAL DISPENSER DETAIL
 P100 N.T.S.



GAS DISTRIBUTION DIAGRAM
 P100 N.T.S.



PLUMBING SUPPLY DIAGRAM
 P100 N.T.S.



PLUMBING SUPPLY PLAN
 P100 1/4" = 1'-0"

Order Plans @ www.lorddine.com