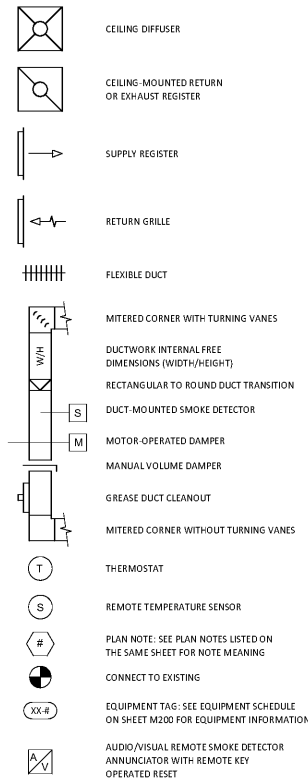


HVAC SYMBOLS



ABBREVIATIONS

AF	ABOVE FINISHED FLOOR
AG	ABOVE FINISHED GRADE
CD	CEILING DIFFUSER
CU	CONDENSING UNIT
EF	EXHAUST FAN
ER	EXHAUST REGISTER
EXT-G	EXISTING
HD	HOOD
MUA	MAKEUP AIR UNIT
OBD	BLADE DAMPER
RG	RETURN GRILLE
RTU	ROOFTOP UNIT
SR	SUPPLY REGISTER
VSC	VARIABLE SPEED CONTROL
COZAS	TENANT'S CO2 ALARM SUPPLIER
GC	GENERAL CONTRACTOR
HES	TENANT'S HVAC EQUIPMENT SUPPLIER
TAB	TENANT'S TEST AND BALANCE VENDOR
TCC	TENANT'S CABLING CONTRACTOR
KES	TENANT'S KITCHEN EQUIPMENT SUPPLIER
HS	TENANT'S HOOD SUPPLIER
TLS	TENANT'S LIGHT/LAMP SUPPLIER
TMB	TENANT'S MENU BOARD SUPPLIER
TMS	TENANT'S MILLWORK SUPPLIER
TP	TENANT'S PHONE SUPPLIER
TSS	TENANT'S SALES SUPPLIER
TSV	TENANT'S SIGN VENDOR
WCS	TENANT'S WALK-IN COOLER SUPPLIER

MATERIAL SCHEDULE

CATEGORY	APPLICATION	ALLOWABLE MATERIAL
DUCT	EXPOSED SUPPLY	RECT. LINED OR ROUND AS SHOWN, PAINTED TO MATCH ROOF DECK
	EXPOSED RETURN	RECT. LINED OR ROUND AS SHOWN, PAINTED TO MATCH ROOF DECK
	EXPOSED GEN. EXHAUST	RECTANGULAR, PAINTED TO MATCH ROOF DECK
DUCT	CONCEALED SUPPLY	RECT. OR ROUND AS SHOWN, LINED OR INSULATED
	CONCEALED RETURN	RECT. OR ROUND AS SHOWN, LINED OR INSULATED
	CONCEALED, GEN. EXHAUST	RECT. OR ROUND AS SHOWN
DUCT	CONCEALED, TYPE I HOOD EXHAUST	RECTANGULAR 16 GA. BLACK IRON W/ WRAP OR UL 1578 FACTORY-MANUFACTURED DUCT W/ WRAP (SUBMIT SHOP DRAWINGS FOR FACTORY-MANUFACTURED DUCT PRIOR TO ORDERING FOR APPROVAL)

GRILLS, REGISTERS, AND DIFFUSERS SCHEDULE

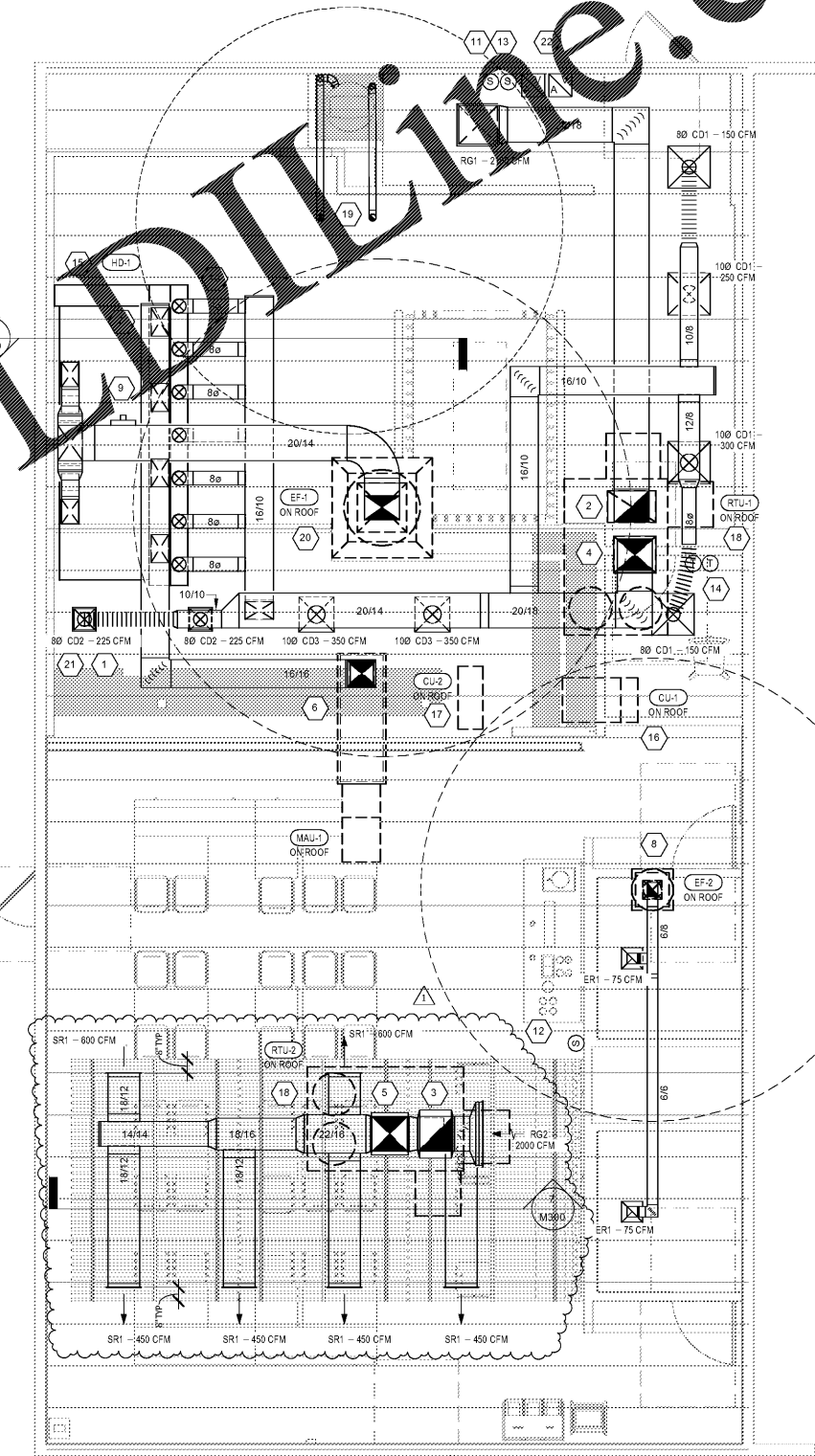
TAG	FURNISHED BY	INSTALLED BY	MANUFACTURER	MODEL	DESCRIPTION	SIZE	MATERIAL	FINISH	MOUNTING	NOTES
CD1	GC	GC	NAILOR	4320A TYPE L	PERFORATED CEILING DIFFUSER	FACE: 24" x 24" NECK: VARIES	ALUMINUM	WHITE	LAY-IN CEILING	PROVIDE INTEGRAL OBD
CD2	GC	GC	NAILOR	4320A Type S	PERFORATED CEILING DIFFUSER	FACE: 12" x 12" NECK: 8"Ø	ALUMINUM	WHITE	Ceiling	Provide integral OBD, Remove 4-way deflector
CD3	GC	GC	NAILOR	4320A Type S	PERFORATED CEILING DIFFUSER	FACE: 20" x 20" NECK: VARIES	ALUMINUM	WHITE	CEILING	PROVIDE INTEGRAL OBD
ER1	GC	GC	NAILOR	4330R TYPE S	PERFORATED CEILING EXHAUST	FACE: 12" X 12" NECK: 6" X 6"	ALUMINUM	WHITE	GYP CEILING	PROVIDE INTEGRAL OBD
RG1	GC	GC	NAILOR	4330R TYPE L	PERFORATED CEILING RETURN	FACE: 24" x 24" NECK: 22" x 22"	ALUMINUM	WHITE	LAY-IN CEILING	
RG2	GC	GC	NAILOR	51FH	0° FIXED BLADE RETURN GRILLE	NECK: 36" x 18"	ALUMINUM	WHITE	WALL	
SR1	GC	GC	NAILOR	51DH	DOUBLE DEFLECTION SUPPLY REGISTER	NECK: 18" x 12"	ALUMINUM	MILL	DUCT	PROVIDE INTEGRAL OBD

HVAC GENERAL NOTES

- A GENERAL NOTES APPLY TO HVAC SHEETS.
- B WORK SHALL COMPLY WITH STATE AND LOCAL CODE REQUIREMENTS AS APPROVED AND AMENDED BY THE AUTHORITY HAVING JURISDICTION, INCLUDING APPLICABLE SECTIONS OF NFPA, THE MECHANICAL CODE, AND ANY INTERIM AMENDMENTS AT THE TIME OF THE PROPOSAL. PURCHASE PERMITS ASSOCIATED WITH THE WORK. OBTAIN INSPECTIONS REQUIRED BY CODE. SEE SHEET ADD04 FOR THE PREVAILING CODES.
- C CONTRACTOR AND SUBCONTRACTORS SHALL REVIEW A COMPLETE SET OF THE CONSTRUCTION DOCUMENTS.
- D COORDINATE WORK WITH THE WORK OF OTHER TRADES, EQUIPMENT FURNISHED BY OTHERS, REQUIREMENTS OF THE OWNER, AND OF THE EXISTING CONDITIONS AT THE PROJECT SITE.
- E DRAWINGS FOR THE MECHANICAL WORK ARE DIAGRAMMATIC, SHOWING THE GENERAL LOCATION, TYPE, LAYOUT, AND EQUIPMENT REQUIRED. THE DRAWING SHALL NOT BE SCALED FOR EXACT MEASUREMENTS; REFER TO ARCHITECTURAL DRAWINGS FOR DIMENSIONS. REFER TO MANUFACTURER'S STANDARD INSTALLATION DRAWINGS FOR EQUIPMENT CONNECTIONS AND INSTALLATION REQUIREMENTS. PROVIDE DUCTWORK, CONNECTIONS, OFFSETS, ACCESSORIES, AND MATERIALS NECESSARY FOR A COMPLETE SYSTEM.
- F DUCT DIMENSIONS ON PLANS INDICATE DIMENSIONS OF INTERNAL FREE AREA.
- G PERFORATED CEILING DIFFUSERS SHALL BE 4-WAY UNLESS NOTED OTHERWISE.
- H COORDINATE ROOF WORK WITH THE OWNER'S CONSTRUCTION MANAGER PRIOR TO CONSTRUCTION.
- I UNLESS NOTED OTHERWISE RECTANGULAR DUCT ELBOWS GREATER THAN 45° SHALL BE MITERED ELBOWS WITH DOUBLE THICKNESS TURNING VANES AND RECTANGULAR DUCT ELBOWS 45° OR LESS SHALL BE RADIUSSED ELBOWS WITH AN INSIDE RADIUS OF AT LEAST 1/2 THE WIDTH OF THE DUCT.
- J REPLACE AIR FILTERS WITH NEW, CLEAN MERV 8 AIR FILTERS AT TURNOVER.
- K THE TERM "FURNISH" MEANS SUPPLY AND DELIVER TO THE PROJECT SITE, READY FOR UNLOADING, UNPACKING, ASSEMBLY, INSTALLATION, AND SIMILAR OPERATIONS. THE TERM "INSTALL" DESCRIBES THE OPERATIONS AT THE PROJECT SITE INCLUDING THE ACTUAL UNLOADING, UNPACKING, ASSEMBLY, ERECTING, PLACING, ANCHORING, APPLYING, WORKING TO DIMENSION, FINISHING, CURING, PROTECTING, CLEANING, AND SIMILAR OPERATIONS. THE TERM "PROVIDE" MEANS TO FURNISH AND INSTALL, COMPLETE AND READY FOR THE INTENDED USE.
- L PROVIDE LABELING CALLED FOR IN THE HVAC DRAWINGS USING ENGRAVED PHENOLIC PLATES.

PLAN NOTES

- 1 SEE ARCHITECTURAL REFLECTED CEILING PLAN FOR CEILING MOUNTED EQUIPMENT LOCATION. TYPICAL 20/18 DUCT UP FOR TRANSITION TO RTU-1 RETURN CONNECTION IN ROOF CURB. RTU-1 SHALL HAVE AN INTEGRAL SMOKE DETECTOR MOUNTED IN THE RETURN AIR STREAM. INTERLOCK SMOKE DETECTOR TO RTU-1 OPERATION.
- 2 20/20 DUCT UP FOR TRANSITION TO RTU-2 RETURN CONNECTION IN ROOF CURB. RTU-2 SHALL HAVE AN INTEGRAL SMOKE DETECTOR MOUNTED IN THE RETURN AIR STREAM. INTERLOCK SMOKE DETECTOR TO RTU-2 OPERATION.
- 3 20/18 DUCT UP FROM BUILDING SUPPLY THROUGH ROOF. TRANSITION TO RTU-1 SUPPLY CONNECTION IN ROOF CURB.
- 4 20/20 DUCT UP FROM BUILDING SUPPLY TO RTU-2 SUPPLY CONNECTION. TRANSITION IN ROOF CURB.
- 5 16/16 DUCT UP THROUGH ROOF. TRANSITION TO MAU-1 SUPPLY CONNECTION IN ROOF CURB.
- 6 10/14 DUCTS UP FROM HOOD TO 20/14 DUCT THROUGH ROOF TO EF-1 COMPLIANT WITH NFPA 96.
- 7 PROVIDE RADIUSSED ELBOWS WITH AN INSIDE RADIUS OF 0.5W AT ELBOWS IN GREASE DUCT.
- 8 8/6 DUCT UP THROUGH ROOF TO EF-2.
- 9 16/10 DUCT DOWN TO MAKEUP AIR PSP DUCT CONNECTION. TRANSITION TO SUPPLY PLenum OPENING. SIZE, TYPICAL FOR 4.
- 10 8" DIA. DUCT DOWN TO AC PSP DUCT CONNECTION. TRANSITION TO SUPPLY PLenum OPENING. SIZE, TYPICAL. CAP UNSEAL DUCT CONNECTIONS.
- 11 INSTALL REMOTE TEMPERATURE SENSOR FOR RTU-1 AT THIS LOCATION 60" AFF. COORDINATE LOCATION WITH EQUIPMENT. INSTALL INSIDE INSULATED BOX.
- 12 INSTALL REMOTE TEMPERATURE SENSOR FOR RTU-2 AT THIS LOCATION 60" AFF. COORDINATE LOCATION WITH EQUIPMENT AND WALL MOUNTED ARTWORK.
- 13 INSTALL REMOTE TEMPERATURE SENSOR FOR HOOD HD-1 AT THIS LOCATION 6" AFF. COORDINATE LOCATION WITH EQUIPMENT. PROVIDE 2" INSULATION. INSTALL THERMISTOR SENSOR TO TEMPERATURE SENSOR TO HOOD CONTROL PANEL. INSTALL INSULATED BOX.
- 14 INSTALL "LIGHTSTAY" THERMOSTAT FOR RTU-1 AND RTU-2 AT THIS LOCATION 6" AFF. COORDINATE WITH ELECTRICAL SWITCHING IN THIS AREA AND EXTEND TO THE REMOTE TEMPERATURE SENSORS AND ROOFTOP UNIT. LABEL EACH THERMOSTAT ACCORDING TO THE THERMOSTAT LOCATION WITH WALL MOUNTED EQUIPMENT THAT THERMOSTATS ARE NOT BLOCKED BY SHELVING, COAT RACKS OR DOORS.
- 15 INSTALL KITCHEN HOOD AND SUPPORT HOOD PER MANUFACTURER'S INSTALLATION INSTRUCTIONS. HOOD ACCORDING TO THE REQUIREMENTS OF ITS LISTING. IN COMPLIANCE WITH NFPA 96, THE BUILDING CODE, AND ANY OTHER APPLICABLE JURISDICTION, HOOD SHALL HAVE AN INTEGRAL DUCT COLLAR TEMPERATURE SENSOR TO AUTOMATICALLY ENERGIZE THE EXHAUST AND MAKEUP AIR FANS IF COOKING TEMPERATURE IS DETECTED. EXHAUST DUCT SYSTEM TO BE WELDED OR FACTORY-MANUFACTURED WATER AND AIR RESISTANT. INSTALL CLEANOUTS PER CODE AND AS SHOWN. INSTALL HOOD PER DETAILS 4, AND 5/M300. CHIPOTLE WILL PROVIDE AN INDEPENDENT TESTING AGENCY FOR TESTING THE INTEGRITY OF THE GREASE DUCT SYSTEM.
- 16 INSTALL REMOTE CONDENSING UNIT FOR WALK-IN COOLER ON ROOF. INSTALL REFRIGERANT LINE SET, THERMOSTATIC EXPANSION VALVE, SOLENOID VALVE, TEMPERATURE CONTROL, SIGHT GLASS, FILTER DRIER, PRESSURE CONTROL, LOW AMBIENT CONTROLS, AND WEATHERPROOF HOUSING. TRAP AND SLOPE REFRIGERANT LINES PER MANUFACTURER'S RECOMMENDATIONS. INSTALLATION SHALL COMPLY WITH ASHRAE/ANSI STANDARD 15. INSTALL THE REFRIGERANT LINE SET UNDER THE ROOF DECK TO WITHIN 3" OF THE CONDENSING UNIT. CUT 2, 1/2" HOLE IN WALK-IN COOLER ROOF FOR REFRIGERANT LINE SET AND SEAL PER THE COOLER MANUFACTURER'S INSTALLATION INSTRUCTIONS AFTER LINE SET IS INSTALLED.
- 17 INSTALL REMOTE CONDENSER FOR ICE MACHINE ON ROOF. INSTALL REFRIGERANT LINE SET, THERMOSTATIC EXPANSION VALVE, SOLENOID VALVE, TEMPERATURE CONTROL, SIGHT GLASS, FILTER DRIER, PRESSURE CONTROL, LOW AMBIENT CONTROLS, AND WEATHERPROOF HOUSING. TRAP AND SLOPE REFRIGERANT LINES PER MANUFACTURER'S RECOMMENDATIONS. INSTALLATION SHALL COMPLY WITH ASHRAE/ANSI STANDARD 15. INSTALL THE REFRIGERANT LINE SET UNDER THE ROOF DECK TO WITHIN 3" OF THE REMOTE CONDENSER. IF REFRIGERANT PIPING TO ICE MAKER IS EXPOSED TO PUBLIC VIEW CONCEAL WITHIN A STAINLESS STEEL SHROUD AS SHOWN IN THE ARCHITECTURAL DRAWINGS.
- 18 INSTALL ROOFTOP EQUIPMENT PER MANUFACTURER'S INSTALLATION INSTRUCTIONS.
- 19 PROVIDE WATER HEATER COMBUSTION AIR AND FLUE VENTS THROUGH THE ROOF PER DETAIL 1/P300. MAINTAIN 10" MINIMUM SEPARATION BETWEEN FLUE VENT AND VENTILATION AIR INTAKES. TERMINATE PER THE WATER HEATER MANUFACTURER'S INSTALLATION INSTRUCTIONS.
- 20 INSTALL EXHAUST FAN EF-1 PER DETAIL 6/M300. INSTALL GREASE VIROGUARD SYSTEM FURNISHED BY CHIPOTLE ON EXHAUST FAN, EF-1.
- 21 PROVIDE SUPPLY DIFFUSER CONNECTION TO SUPPLY SYSTEM PER DETAIL 1/M300. TYPICAL.
- 22 PROVIDE AUDIO/VISUAL REMOTE SMOKE DETECTOR ANNUNCIATOR WITH REMOTE KEY OPERATED RESET. WIRE A UNIT BACK TO EACH SMOKE DETECTOR. MOUNT UNIT 60" AFF. TYPICAL.
- 23 NOT USED.



HVAC FLOOR PLAN
1/4" = 1'-0"

NATIONAL ENGINEERING
 7880 Madison Road
 Columbus, Ohio 43230
 Phone: (614) 751-9610
 Fax: (614) 552-5240
 Contact: Mike Chapman
 (614) 595-9543
 mchapman@nationalengineering.com

CHIPOTLE MEXICAN GRILL, INC.
 1400 WINDY HILLS, SUITE 500
 DENVER, COLORADO 80202
 TELEPHONE: 1800-999-8000
 FAX: 1303-586-9004
 INTERNET: WWW.CHIPOTLE.COM

STORE NO.: 3007
 PURCELLVILLE
 Berlin Turnpike and West Colonial
 Highway
 Purcellville, VA 20132

Issue Number	Date	Description
1	12.19.2016	Permit Set
2		
3		
4		
5		
6		
7		
8		
9		
10		
11		
12		
13		
14		
15		
16		
17		
18		
19		
20		
21		
22		
23		
24		
25		
26		
27		
28		
29		
30		

Drawn: _____ Checked: _____
 FC RTJ
 Project No.: 1601065
 Contents: HVAC PLAN