

FINISH LEGEND

FLOOR FINISHES		WALL BASE FINISHES		WALL FINISHES		CEILING/DECK FINISHES	
LGD. #		LGD. #		LGD. #		LGD. #	
F1	POLISHED CONCRETE	B1	BLACK RUBBER, COVELESS	P1	NOT USED	C1	OPEN TO STRUCTURE, UNPAINTED
F2	QUARRY TILE	B2	QUARRY TILE	P2	FIBERGLASS REINFORCED PANELS (SMOOTH FINISH)	C2	WOOD SLAT CEILING SYSTEM
F3	NOT USED	B3	BLACK RUBBER, COVE	P3	GYP BD; PAINT "THIN ICE"; SATIN FINISH ABOVE 5'-0" AFF	C3	GYP BD; PAINT "MOONLIT SNOW"
F4	SEALED CONCRETE			P4	GYP BD; PAINT "THIN ICE"; SEMI-GLOSS BELOW 5'-0" AFF	C4	ZX4 VINYL-FACED LAY-IN
F5	RESINOUS FLOORING			P5	CERAMIC TILE	C5	NOT USED
				P6	FIBERGLASS REINFORCED PANELS (PEBBLED FINISH)	C6	NOT USED
				P7	DIAMOND PLATE TO 48" AFF		
				P8	GYP BD; PAINT "AUTUMN RIDGE" BEHIND SLAT WALL		
				P9	WOOD SLAT WALL SYSTEM		
				P10	NOT USED		

ROOM FINISH SCHEDULE

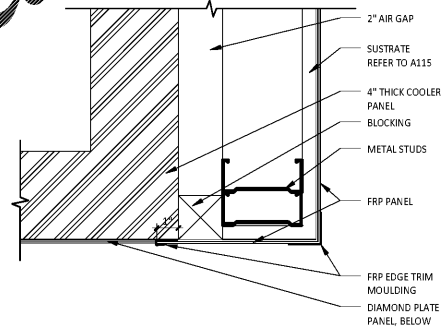
ROOM #	ROOM NAME	FLOOR FINISH	BASE FINISH	WALL FINISH	CEILING FINISH	CEILING HEIGHT	REMARKS
101	DINING	F1	B1	SEE 1/A120	C1/C2/C3	STR/±10'-0"	REFER TO INTERIOR ELEVATIONS AND SPECIFICATION SHEETS
102	UTENSIL	F1	B1	SEE 1/A120	C5	-	REFER TO INTERIOR ELEVATIONS AND SPECIFICATION SHEETS
103	PASSAGE	F1	B1	SEE 1/A120	C3	-	REFER TO INTERIOR ELEVATIONS AND SPECIFICATION SHEETS
104	P.O.S.	F2	B2	SEE 1/A120	C3	±9'-0"	REFER TO INTERIOR ELEVATIONS AND SPECIFICATION SHEETS
105	ORDERING	F1	B1	SEE 1/A120	C1/C3	STR / ±9'-0"	REFER TO INTERIOR ELEVATIONS AND SPECIFICATION SHEETS
106	SERVING	F2	B2	SEE 1/A120	C3	±9'-0"	REFER TO INTERIOR ELEVATIONS AND SPECIFICATION SHEETS
107	COOKING	F2	B2	SEE 1/A120	C3	±9'-0"	REFER TO INTERIOR ELEVATIONS AND SPECIFICATION SHEETS
108	KITCHEN	F2	B2	SEE 1/A120	C4	10'-0"	REFER TO INTERIOR ELEVATIONS AND SPECIFICATION SHEETS
109	OFFICE	F2	B2	SEE 1/A120	C4	9'-0"	REFER TO INTERIOR ELEVATIONS AND SPECIFICATION SHEETS
110	WALK-IN COOLER	F3	B2	SEE 1/A120	STR	STR	REFER TO INTERIOR ELEVATIONS AND SPECIFICATION SHEETS
111	MEN'S	F5	B3	SEE 1/A120	C3	8'-0"	REFER TO INTERIOR ELEVATIONS AND SPECIFICATION SHEETS
112	WOMEN'S	F5	B3	SEE 1/A120	C3	8'-0"	REFER TO INTERIOR ELEVATIONS AND SPECIFICATION SHEETS
113	FAX ORDER MAKE LINE	F2	B2	SEE 1/A120	C3	±9'-0"	REFER TO INTERIOR ELEVATIONS AND SPECIFICATION SHEETS

GENERAL NOTES

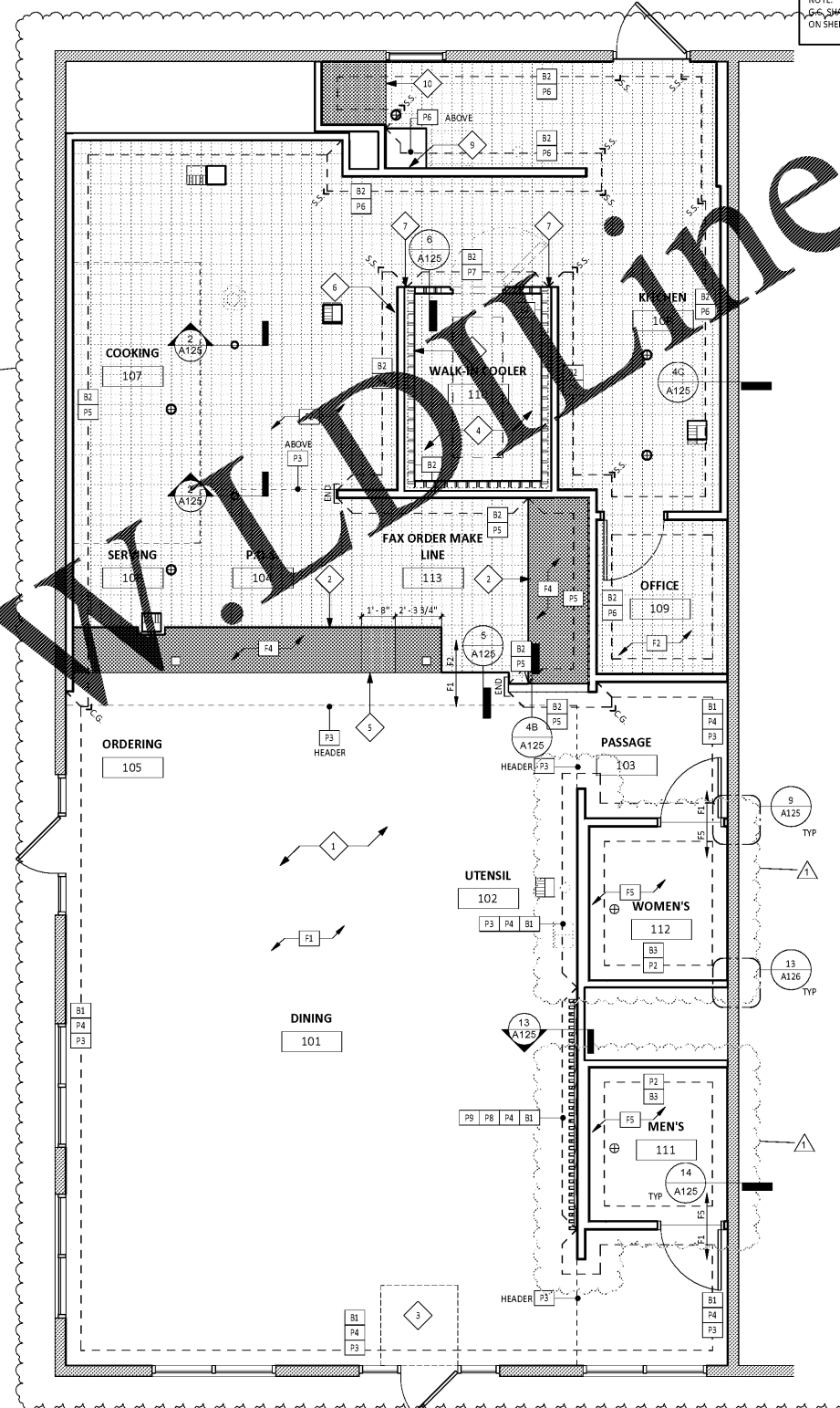
- REFER TO SHEET A125 AND A126 FOR ALL TYP. FINISH DETAILS
- THE FOLLOWING SYMBOLS ARE USED TO DENOTE END CAPS & CORNER GUARDS:
 - = CORNER GUARD - REFER TO 5/A126 AND 9/A126
 - = PROVIDE 1-1/2" X 1-1/2" STAINLESS STEEL CORNER GUARD - REFER TO 4D/A125 AND 4E/A125
 - = PROVIDE END GUARD - REFER TO 10/A126
- GC SHALL PROVIDE STAINLESS STEEL BASE AT ALL OUTSIDE QUARRY TILE CORNERS - REFER TO SPECIFICATIONS, 4D/A125, AND 4E/A125 FOR DETAILS.
- REFER TO INTERIOR ELEVATIONS FOR ADDITIONAL INFORMATION ON FINISH LOCATIONS

FINISH PLAN KEYNOTES

- CONCRETE FLOOR TO BE POLISHED - REFER TO SPEC.
- FINISH SIDES OF CURBS WITH QUARRY TILE
- WALK-OFF MAT - INSTALL PER MANUFACTURER'S INSTRUCTIONS; REFER TO 12/A125
- INTERIOR & EXTERIOR FINISHES OF WALK-IN COOLER ARE EMBOSSED STL. AS FURNISHED BY MANUF.
- PROVIDE QUARRY TILE ON TOP OF CURB FOR SMART SAFE. PROVIDE BULLNOSE TILE TO LAP OVER TOP CUT EDGE OF BASE TILE. REFER TO SHEET 3/A125
- G.C. TO PROVIDE 38 GA. STAINLESS STL. SHROUD AROUND EXPOSED REFRIGERATION LINES AT ICE MAKER
- FRP CLOSURE AT COOLER AIR GAP. REFER TO 2/A120
- COOLER WALL PANELS AS PROVIDED BY THE COOLER MANUFACTURER HAVE A 26-GAUGE COATED AND EMBOSSED STEEL FINISH
- PROVIDE STAINLESS STEEL ON WALL - REFER TO 7/A125
- CONCRETE CURB FOR WATER HEATER - APPLY QUARRY TILE TO THE TOP AND SIDES OF THE CURB. REFER TO 3/A125



2 A120
DETAIL @ WALK-IN COOLER
3" = 1'-0"

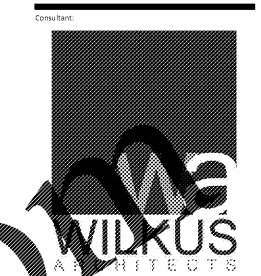


1 A120
FINISHES PLAN
1/4" = 1'-0"

ALL WALLS RECEIVING QUARRY TILE SHALL HAVE A WATERPROOFING MEMBRANE INSTALLED

NOTE: PROVIDE STAINLESS STL. QUARRY TILE BASE @ ALL OUTSIDE CORNERS - REFER TO SPEC.

NOTE: GC SHALL REVIEW RESPONSIBILITY MATRIX ON SHEET A001 PRIOR TO CONSTRUCTION



15 North Arroyo North, 1st Floor, N.J. 08243
Phone: 952.944.8965 www.wilkusarch.com

EXPRES 12-31-17

SIGNATURE
30 August, 2017
DATE

COPYRIGHT 2013
THIS DRAWING IS AN INSTRUMENT OF SERVICE AND AS SUCH REMAINS THE PROPERTY OF CHIPOTLE MEXICAN GRILL, INC. PERMISSION FOR USE OF THIS DOCUMENT IS LIMITED AND CAN BE EXTENDED ONLY BY WRITTEN AGREEMENT WITH CHIPOTLE MEXICAN GRILL, INC.



CHIPOTLE MEXICAN GRILL, INC.
1410 WYNDGROVE STREET, SUITE 500
DENVER, COLORADO 80202
TELEPHONE: (303) 595-4000
FAX: (303) 595-4004
INTERNET: WWW.CHIPOTLE.COM

STORE NO.: 3007
Purcellville
1200 Wolf Rock Drive, Suite 130
Purcellville, VA 20132

Issue Record
12-15-16 Permit Set

Revisions:
03-06-17 OWNER COMMENTS
08-23-17 CHIPOTLE COMMENTS

Drawn: D. Austin
Checked: M. Wilkus

Project No.
2016-0424

Contents:
Finish Plan

A120

Order Plans @