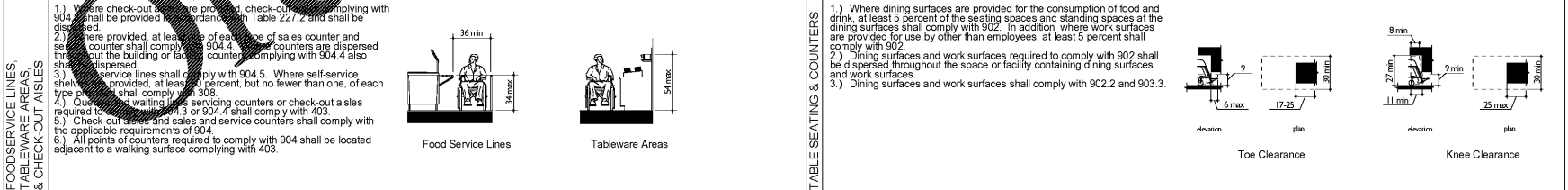
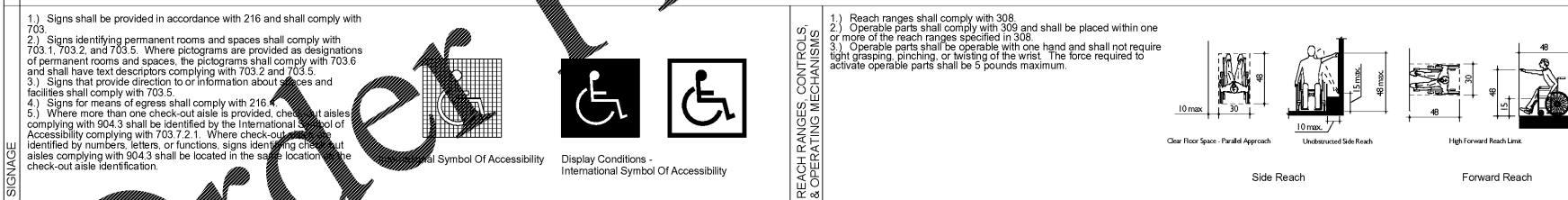
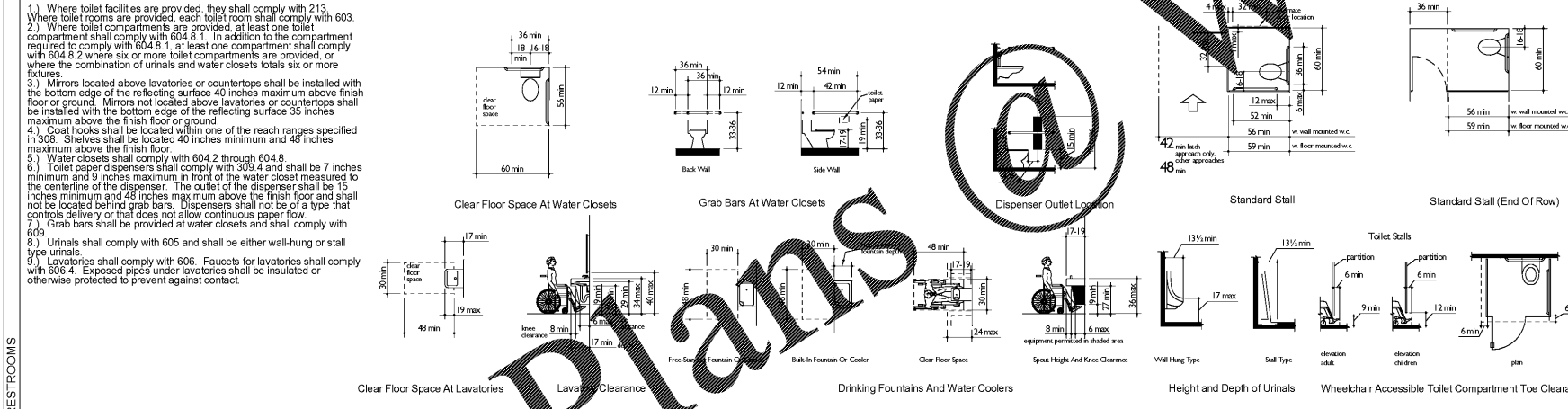
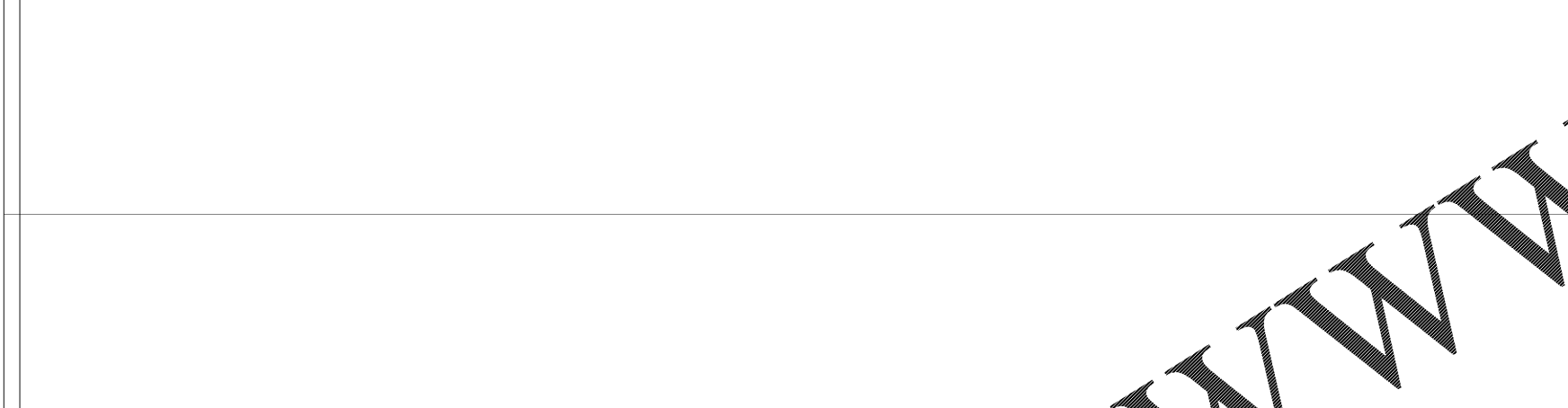
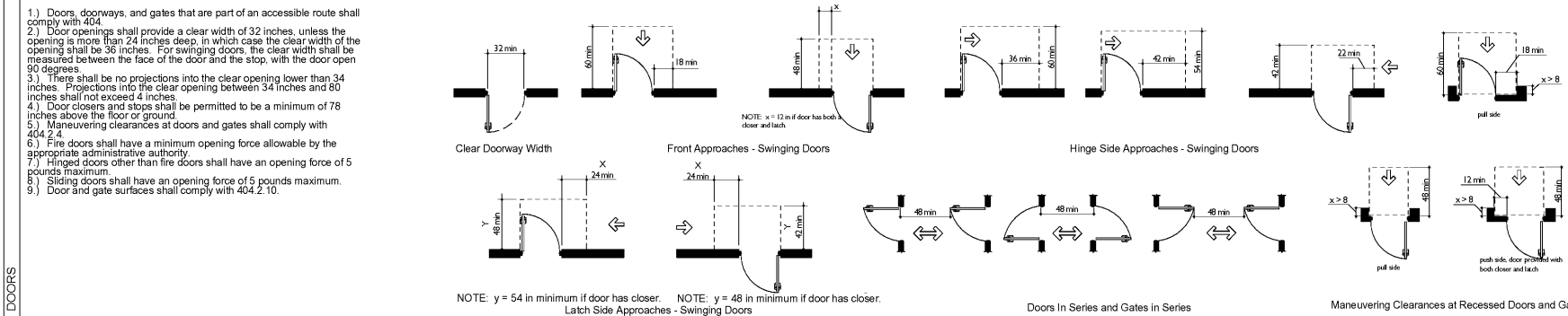
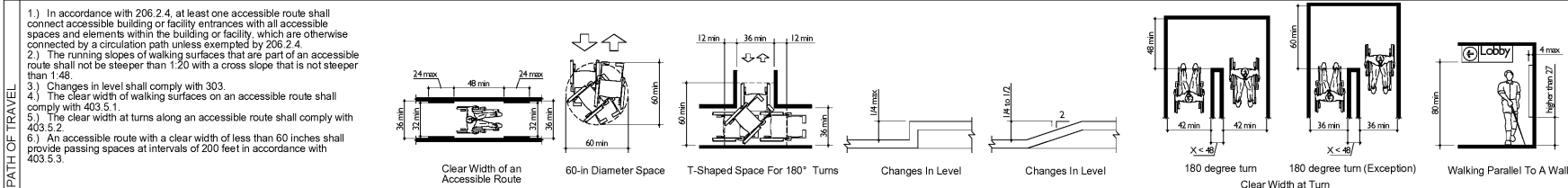


A.D.A.A.G. INTERIOR ACCESSIBILITY COMPONENTS

THIS TENANT SPACE IS REQUIRED TO BE ACCESSIBLE AS SET FORTH IN THE AMERICANS WITH DISABILITIES ACT OF 2010. MAINTAIN COMPLIANCE WITH ALL APPLICABLE REQUIREMENTS OF THE ACT AND ITS ACCESSIBILITY GUIDELINES (A.D.A.), (A.D.A.A.G.).

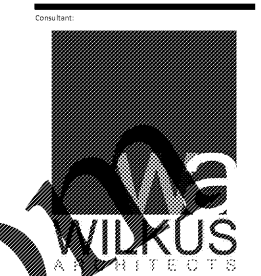


ADDITIONAL ACCESSIBILITY COMPONENTS

IN ADDITION TO ALL A.D.A./A.D.A.A.G. REQUIREMENTS, THIS FACILITY SHALL MEET THE REQUIREMENTS OF THE LOCAL JURISDICTION FOR ACCESSIBILITY AS LISTED BELOW.

* WHERE INFORMATION LISTED/SHOWN IN THIS SECTION CONFLICTS WITH THE A.D.A.A.G. INTERIOR ACCESSIBILITY COMPONENTS, THE MORE RESTRICTIVE OF THE TWO REQUIREMENTS SHALL BE FOLLOWED.

2009 I.C.C./A.N.S.I. A117.1 - ACCESSIBLE AND USABLE BUILDINGS AND FACILITIES
 THE REQUIREMENTS OF THE 2009 I.C.C./A.N.S.I. A117.1 CODE SHALL APPLY TO THIS FACILITY. SOME SPECIFIC REQUIREMENTS DIFFERING WITH THOSE IN A.D.A.A.G. ARE LISTED BELOW.



15 North Riverside North, 1st Floor, N.W. 58243
 Phone: 952.944.5960 | www.wilkusarch.com

DATE: 30 August, 2017

EXPIRES 12-31-17

CHIPOTLE MEXICAN GRILL, INC.
 1402 WYNDGATE STREET, SUITE 500
 DENVER, COLORADO 80202
 TELEPHONE: (303) 595-4000
 FAX: (303) 595-4004
 INTERNET: WWW.CHIPOTLE.COM

STORE NO.: 3007
 Purcellville
 1200 Wolf Rock Drive, Suite 130
 Purcellville, VA 20132

Revisions:
 1 03-06-17 OWNER COMMENTS
 2 08-23-17 CHIPOTLE COMMENTS

Drawn: D. Austin
 Checked: M. Wilkus

Project No: 2016-0424

Accessibility Requirements

A002

WWW.LDILine.com