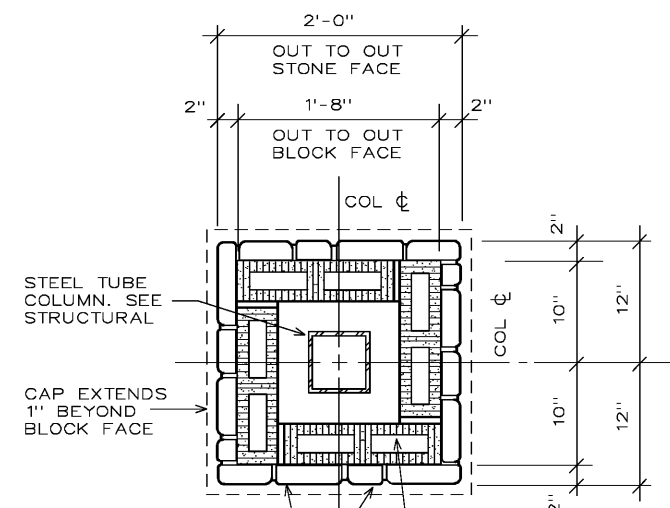
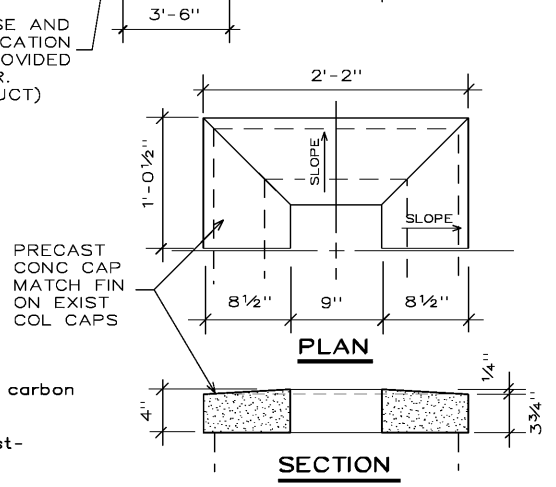


**UPPER COLUMN DETAIL**  
 3/4" = 1'-0" (A2.1)



**LOWER COLUMN DETAIL**  
 3/4" = 1'-0" (A2.1)



**COLUMN CAP DETAIL**  
 3/4" = 1'-0" (A2.1)

**OUTLINE TECHNICAL SPECIFICATIONS**

- DIVISION 1 - GENERAL CONDITIONS PROVIDED BY THE OWNER  
 DIVISION 2 - SITE WORK PROVIDED BY OWNER  
 DIVISION 3 - CONCRETE  
 1. REINFORCING - ASTM A615, grade 60.  
 2. CONCRETE - 3,000 PSI at 28 days in both pavilion floor and walkway slab with natural sand and fine aggregate where shown on drawings. Light broom finish on all concrete surfaces.  
 3. WELDED WIRE FABRIC - ASTM A185, 6"x6" - 1.4/1.4. (Or FiberMesh)  
 4. VAPOR BARRIER - 6 mil polyethylene.  
 5. JOINTS - Provide saw cut control joints as shown on drawings.  
 DIVISION 4 - MASONRY  
 CONCRETE MASONRY UNITS - Concrete masonry units shall be hollow, load bearing units ASTM C-90 grade N-1 with a net strength of 2000 PSI and f'm of 1350 PSI.  
 2. MOTAR - Mortar shall comply with ASTM C-270 (type M or S)

**FLOOR PLAN**

3/16" = 1'-0"

**DIVISION 5 - METALS**

- STRUCTURAL STEEL - ASTM A36 unless otherwise shown.
- PLATES - ASTM A36. Painted black.
- STEEL TUBE - ASTM A 501, Grade B.
- MISCELLANEOUS STEEL - Mild Steel
- BOLTS, NUTS, WASHERS - ASTM A325 or A490 high strength carbon steel.
- PAINTING - Shop coat all miscellaneous steel shapes with fast-dry, rust inhibiting metal primer.

GRILL BASE AND EXACT LOCATION TO BE PROVIDED BY OWNER. (SEE STRUCT)

<b>NEW PICNIC PAVILION</b>		17116
<b>FOR DELLINGER PARK</b>		<b>A2.1</b>
<b>CARTERSVILLE, GA</b>		09/01/17
FLOOR PLAN & DETAILS		