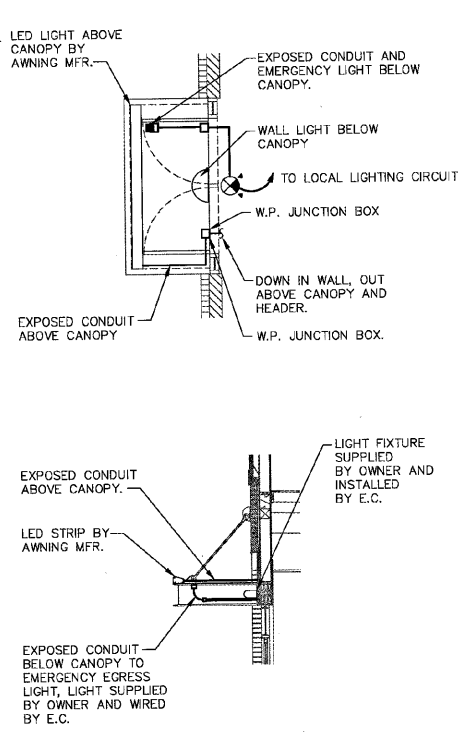
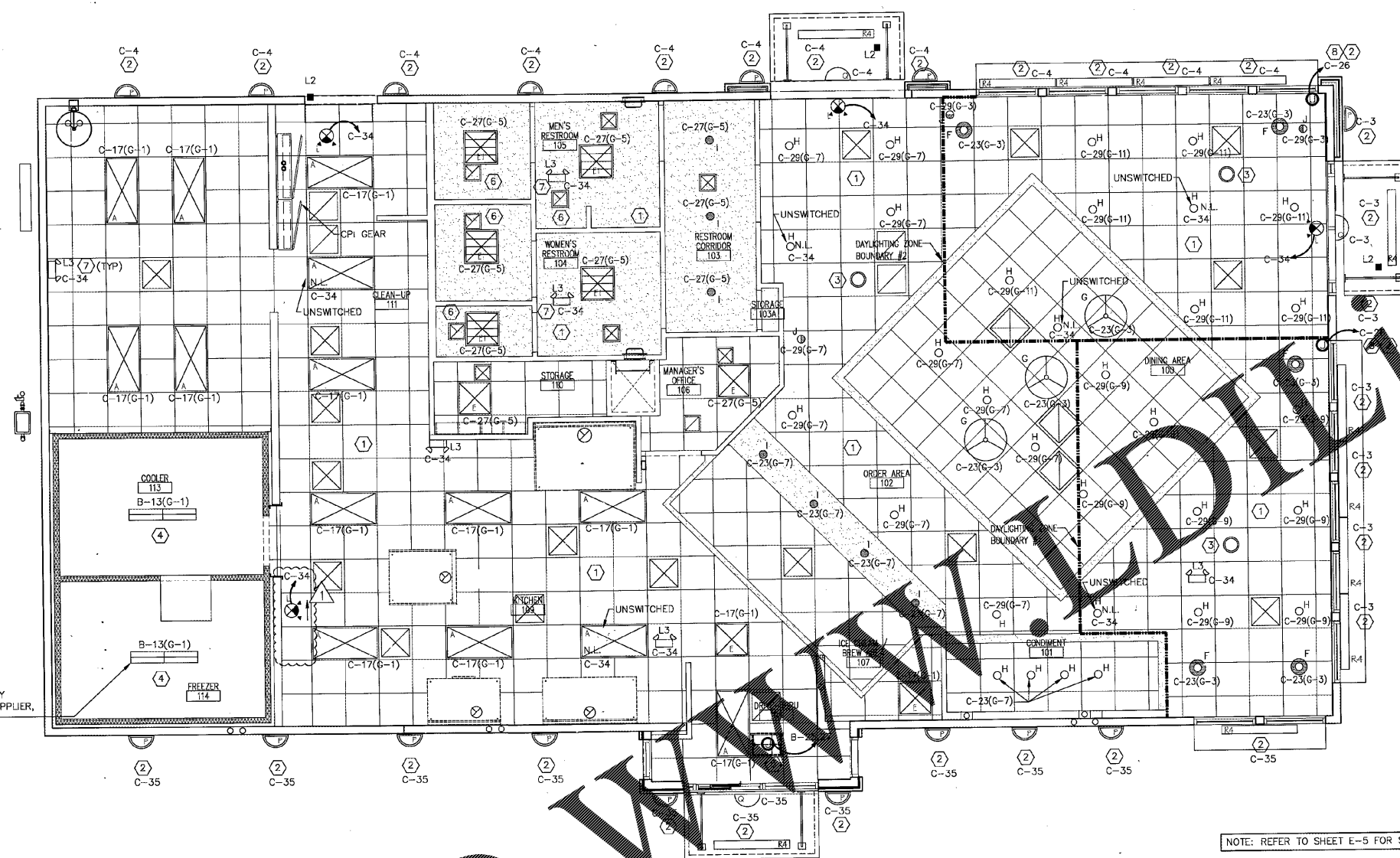


INRPP
 ARCHITECTS & ENGINEERS
 3005 CARRINGTON MILL BLVD., SUITE 105
 MORRISVILLE, NORTH CAROLINA 27560
 PH: 919 544 9399
 FAX: 919 544 9399
 A DIVISION OF LMHT ASSOCIATES

CERTIFICATE OF REGISTRATION
 STATE OF NORTH CAROLINA
 PROFESSIONAL ENGINEER
 LICENSE NO. 10028
 EXPIRES 12/31/2017

Hardee's
 CHARACTERS & TRADITIONS
 HARDEE'S TAKE PROTOTYPE
 143 CHURCH STREET
 BATESBURG-LEESVILLE, SOUTH CAROLINA 29804



NOTE:
 E.C. SHALL VERIFY LIGHTING IS IN ACCORDANCE WITH
 SODHEC REGULATION 61-26 SECTION 6-303.11 REGARDING
 LIGHTING INTENSITY. E.C. SHALL ADJUST LIGHTING AS
 NECESSARY TO MEET REQUIREMENTS.

NOTE:
 EXTERIOR LIGHTING SHALL BE CONTAINED IN CUT-OFF
 TYPE LUMINAIRES AND SHALL BE DIRECTED IN TOWARD
 THE PROPERTY SO AS NOT TO CREATE LIGHT TRESPASS
 ON TO ADJACENT PROPERTIES.

NOTE: REFER TO SHEET E-5 FOR SITE LIGHTING.

SCALE: 1/4"=1'-0" 1

LIGHTING PLAN

INTERIOR			
MARK	SYMBOL	MODEL#	DESCRIPTION
A	LED	LJT24-40MLG-FSA12-EU	2x4 LED LENS TROFFER, 4000K
E	LED	LJT22-40MLG-FSA12-EU	2x2 LED LENS TROFFER, 4000K
E1		LJT22-40MLG-FSA12-EU-GFK22	TYPE E1 2x2 LED TROFFER WITH FLANGE KIT FOR HARD CEILING (USE AS REQUIRED)
F		23425/ALU-OP WITH LED LAMP	HELIX PENDANT LIGHT
F LED	NOT USED		
G		CYLINDER PENDANT LIGHT LCKE-WG-30BLED-BS-GEN3	LARGE DRUM PENDANT WITH 18" HIGH X 30" DIA. SHADE WITH (3) LED LAMPS PROVIDED BY SECURITY LIGHTING
H	LED	SL6LED1K-35K-WH/DBXQL	6" RECESSED LED DOWN LIGHT, 12 WATT, 1000 LUMEN WITH WHITE TRIM
I	LED	SL6LED1K-35K-WH/P187TG	6" RECESSED LED DOWN LIGHT, 12 WATT, 1000 LUMEN WITH WHITE TRIM FOR USE WITH DRYWALL CEILING APPLICATION
J	LED	SL6LED1K-35K-WH/DBXQL	6" RECESS LED WALL WASH LIGHT, 12 WATT, 1000 LUMEN WITH WHITE TRIM
L		CCRRCB	COMBO EXIT LED LIGHT, BLACK WITH RED LETTERING, UNIVERSAL FACE, WITH REMOTE CAPABILITIES
ORS			DOUBLE REMOTE EGRESS EMERGENCY LED LIGHT, WHITE, TO BE POWERED OFF CCRRCB
L3		CCRRCB	EMERGENCY EGRESS FIXTURE WITH BATTERY PACK

EXTERIOR			
MARK	SYMBOL	MODEL#	DESCRIPTION
P		RWSC-72L-5K-UD-U-BK	EXTERIOR WALL SCONCE, UP/DOWN LIGHT, RADIUS, BLACK, 25 WATT LED
Q		RWSC-36L-5K-DO-U-BK	EXTERIOR WALL SCONCE, DOWN LIGHT ONLY, RADIUS, BLACK, 14 WATT LED
R4			AWNING UPLIGHT ONLY LAMP - LED - FURNISHED WITH AWNING

LIGHT FIXTURE SCHEDULE (CONTD)

SCALE: 3 N.T.S.

LIGHT ZONE SCHEDULE		
LIGHT ZONE	LIGHT CIRCUIT	LOCATION SERVED
G-1	C-17	KITCHEN/STORAGE AREAS/WALK-INS
C-3	C-23/C-29	DINING
G-5	C-27	OFFICE/TOILETS/TOILET EXHAUST FANS
G-7	C-23	SALES/DINING
G-7	C-29	DINING
G-9	C-29	DINING - DAYLIGHT ZONE #1
C-11	C-29	DINING - DAYLIGHT ZONE #2

LIGHTING CONTROL PANEL PROVIDED WITH PILOT LIGHT OVERRIDE SWITCHES FOR EACH LIGHTING ZONE MOUNTED ON THE FACE OF THE CPI GEAR.

- NOTES:
- ALL STANDARD AND EMERGENCY LIGHTING FIXTURES ARE INCLUDED WITH HED LIGHTING PACKAGE. CONTRACTOR IS RESPONSIBLE FOR STORAGE, CARE, AND INSTALLATION OF LIGHTING FIXTURES WHEN THEY ARRIVE AT SITE. CONTACT HED EQUIPMENT SALES REP IF ANY QUESTIONS.
 - WIRE THRU BUILDING CONTROL PANEL. VERIFY REQUIREMENTS WITH OWNER.
 - COORDINATE WITH AUDIO SYSTEM INSTALLER FOR SPEAKER REQUIREMENTS.
 - WIRE THRU INTEGRATED CONTROL PANEL. VERIFY EXACT REQUIREMENTS WITH OWNER.
 - J-BOX ABOVE CEILING FOR FLUSH CEILING MOUNTED 2.0KW ELECTRIC HEATER. (208V-1P). UNIT COMES W/ BUILT-IN DISCONNECT SWITCH.
 - RESTROOM EXHAUST FAN TO BE CONTROLLED BY LIGHTING GROUP G-5
 - CONNECT ALL EMERGENCY AND EXIT LIGHTS TO LOCAL LIGHTING CIRCUIT AHEAD OF ANY SWITCH PER NEC 700.12F. CIRCUIT WITH 1/2" CONDUIT, 2 #12.
 - J-BOX FOR CANOPY MOUNTED SIGN LIGHTING. NUMBER OF LUMINAIRES IS DIAGRAMMATIC. E.C. SHALL VERIFY EXACT REQUIREMENTS AND COORDINATE ROUGH-IN AND INSTALLATION WITH GENERAL CONTRACTOR AND SIGN VENDOR. INSTALLATION SHALL COMPLY WITH NEC 600.6 SEE ELEVATIONS ON SHEETS A-5 AND A-6 FOR ADDITIONAL INFORMATION.

LIGHT FIXTURE SCHEDULE

SCALE: 2 N.T.S.

LIGHTING SWITCH SCHEDULE

SCALE: 4 N.T.S.

LIGHTING NOTES

SCALE: 5 N.T.S.

NO.	REVISIONS	DATE
1	DESCRIPTION	5/7/2017
2	COORDINATION	

LIGHTING PLAN	
DRAWN BY: VEG	CHECKED BY: DRS
APPROVED BY: VEG	DATE: 2-28-17

CKE SITE ID:
 DATE: 2-28-17
 SHEET NUMBER: **E2**