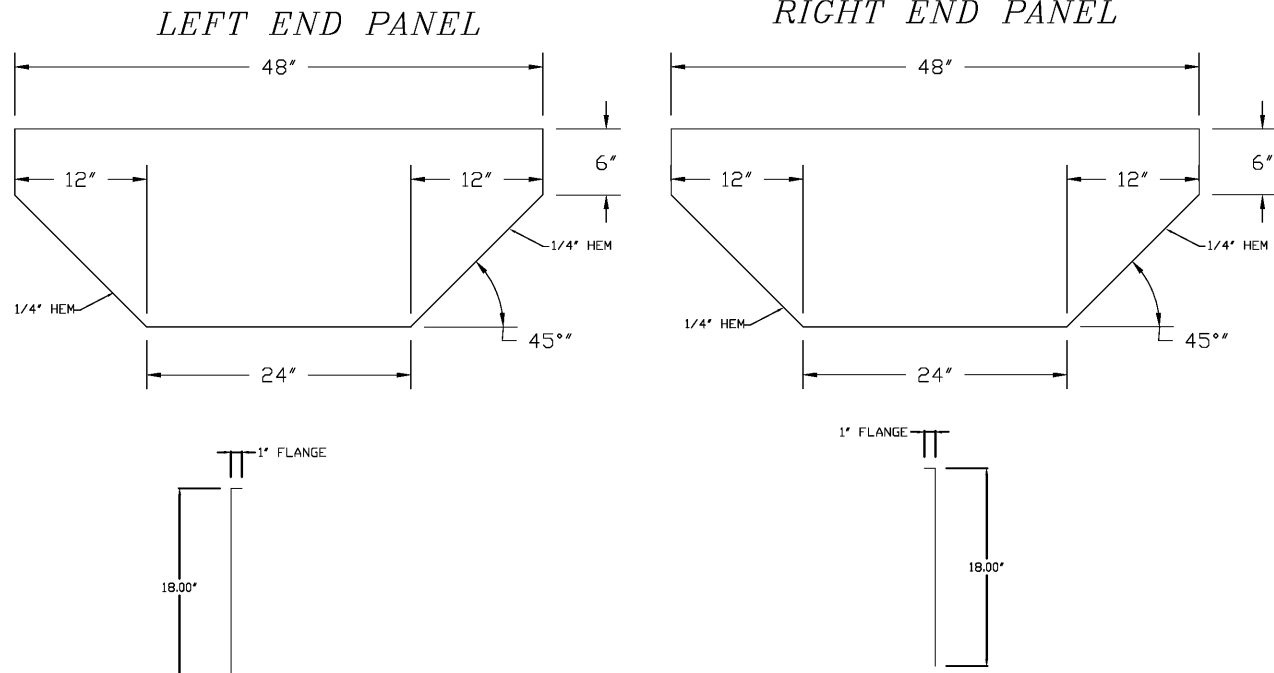
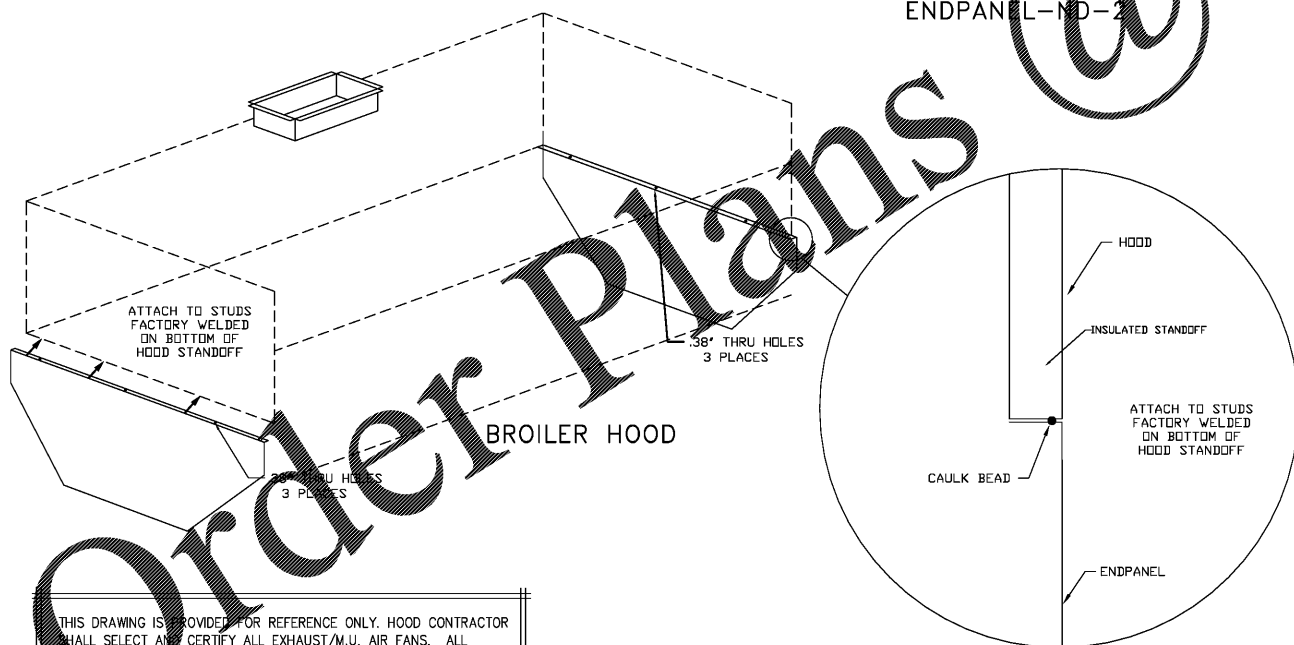


BROILER HOOD END PANELS



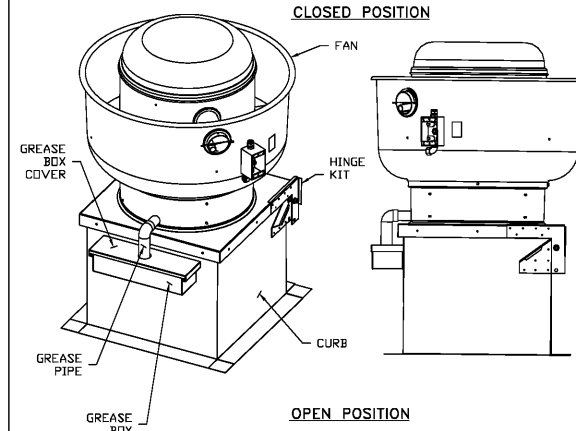
DO NOT INCLUDE 90 DEGREE BEND FOR WALL ATTACHMENT

END PANELS INSTALL FLUSH WITH OUTSIDE OF THE BROILER HOOD ON THE INSULATED END STANDOFFS



THIS DRAWING IS PROVIDED FOR REFERENCE ONLY. HOOD CONTRACTOR SHALL SELECT AND CERTIFY ALL EXHAUST/M.U. AIR FANS. ALL SYSTEMS SHALL MEET ALL APPLICABLE REQUIREMENTS OF STATE AND FEDERAL CODES AND OTHER REQUIREMENTS AS SHOWN IN DESIGN.

GREASE BOX INSTALLATION



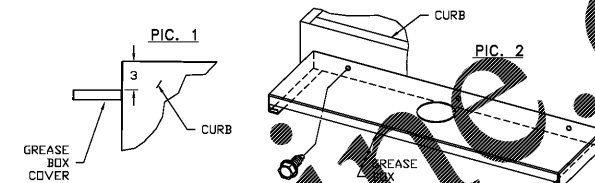
PARTS INCLUDED

- GREASE BOX
- GREASE BOX COVER
- GREASE PIPE
- SHEET METAL SCREWS
- 3 - LONG (3/4" LG.)

GREASE BOX FIELD INSTALLATION

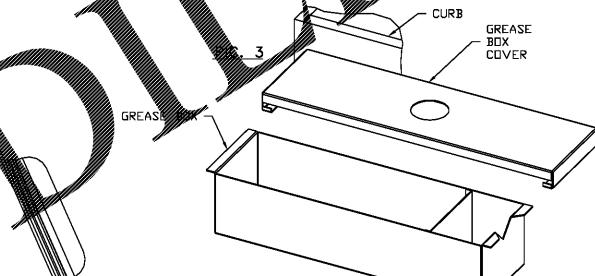
STEP 1)

ATTACH GREASE BOX COVER TO THE CURB, HOLD 3" DIMENSION AS SHOWN ON PIC. 1. SCREW GREASE BOX COVER TO CURB USING (3) LONG (3/4" LG.) SCREWS AS SHOWN ON PIC. 2.



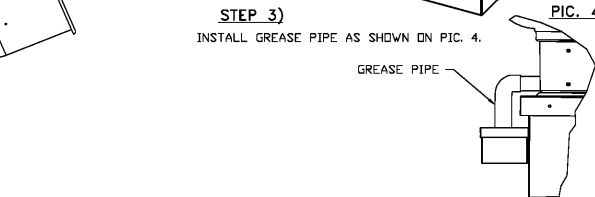
STEP 2)

ATTACH GREASE BOX TO GREASE BOX COVER, SLIDE AND DROP. AS SHOWN ON PIC. 3.

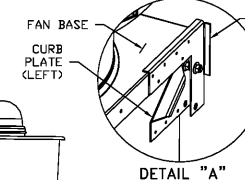
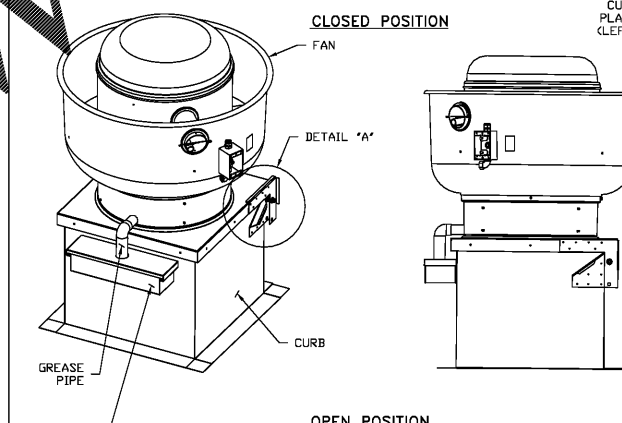


STEP 3)

INSTALL GREASE PIPE AS SHOWN ON PIC. 4.



HINGE KIT INSTALLATION



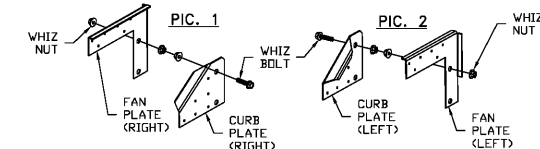
PARTS INCLUDED

- 2 - FAN PLATES (LEFT & RIGHT)
- 2 - CURB PLATES (LEFT & RIGHT)
- 2 - WHIZ BOLTS
- 6 - WHIZ NUTS
- SHEET METAL SCREWS
- 24 - # 14 X 3/4" SCREWS

HINGE KIT FIELD INSTALLATION

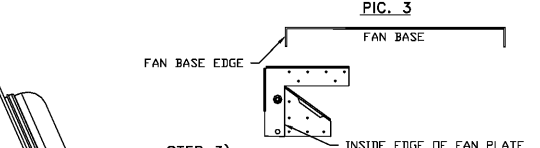
STEP 1)

ASSEMBLE FAN PLATE WITH CURB PLATE AS SHOWN ON PIC. 1 AND PIC. 2 (IF PARTS ARE NOT ASSEMBLED).



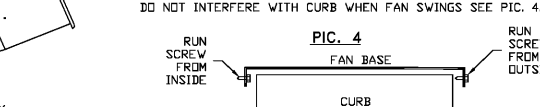
STEP 2)

SEE DETAIL "A" FOR POSITIONING FAN PLATE ON FAN BASE. LINE UP FAN BASE EDGE TO INSIDE EDGE OF FAN PLATE AS SHOWN ON PIC. 3.



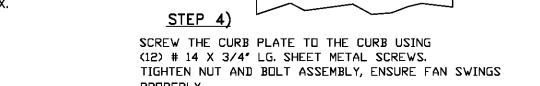
STEP 3)

SCREW THE FAN PLATE TO THE FAN BASE USING (12) # 14 X 3/4" LG. SHEET METAL SCREWS. NOTE: IF THE SCREWS HIT THE CURB, THEN RUN THE SCREWS FROM INSIDE THE FAN BASE, ALWAYS BE SURE THAT SCREWS DO NOT INTERFERE WITH CURB WHEN FAN SWINGS SEE PIC. 4.



STEP 4)

SCREW THE CURB PLATE TO THE CURB USING (12) # 14 X 3/4" LG. SHEET METAL SCREWS. TIGHTEN NUT AND BOLT ASSEMBLY, ENSURE FAN SWINGS PROPERLY.



REVISIONS	
NO.	DESCRIPTION

CAPTIVE
National Accounts
417 North St. Logansport, IN 46947 PHONE: (859) 534-4822 FAX: (874) 722-7213 EMAIL: dan@captiveline.com

HARDEE'S T31-MT 4F BATESBURG/LEESVILLE SC
BATESBURG/LEESVILLE, SC

DATE: 2/24/2017
DWG.#: 2933344
DRAWN BY: RDR
SCALE: 3/4" = 1'-0"
MASTER DRAWING
SHEET NO. 6

NRD Project # 16399
Captiveline Restaurant Consultants
143 Church Street
Batesburg, SC 29006
Phone: 803.584.9200
Fax: 803.584.9209
A Division of Captiveline Associates

REVISIONS

NO.	DESCRIPTION	DATE

HARDEE'S T24KE PROTOTYPE
143 Church Street
Batesburg, SC 29006

HOOD DETAILS

NO.	DESCRIPTION	DATE

CHECKED BY: []
APPROVED BY: []
DATE: 2-28-17
SHEET NUMBER: H6