

Hardee's Restaurant
 A CHRYSLER & FENNER RESTAURANT
 2500 CARROLLWOOD MILL RD. SUITE 100
 MEADOWSVILLE, NORTH CAROLINA 27040
 PH: 919 598 7252 Fax: 919 584 9289
 A Division of L&L Associates

Hardee's
 CHAMBERLAIN, MISSISSIPPI

Hardee's
 HARDEE'S T24KE PROTOTYPE
 143 CHURCH STREET
 BATESBURG-LEESVILLE, SOUTH CAROLINA, 29094

NO.	REVISIONS DESCRIPTION	DATE

DRAWN BY: CHECKED BY: CHECKED APPROVED BY:
--

CHEK SITE ID:
 DATE: 2-28-17

SHEET NUMBER: **H1**

HOOD INFORMATION - Job#293344

HOOD NO.	TAG	MODEL	LENGTH	MAX. COOKING TEMP.	TOTAL EXH. CFM	EXHAUST PLENUM RISER(S)				S.P.	HOOD CONSTRUCTION	HOOD CONFIG.	
						WIDTH	LENG.	HEIGHT	DIA.			CFM	END TO END
1	BROILER	4830 ND-2	3' 1.00'	600 Deg.	660		4'	8'	660	-0.450'	430 SS Where Exposed	ALONE	ALONE
2	BLODGETT OVEN	4824 ND-2	5' 10.00'	450 Deg.	900		4'	10'	900	-0.294'	430 SS Where Exposed	ALONE	ALONE
3	GRIDDLE	3347 BD-2	4' 4.00'	450 Deg.	650		4'	8'	650	-0.333'	430 SS Where Exposed	ALONE	ALONE
4	FRYER	3347 BD-2	5' 7.00'	450 Deg.	838		4'	10'	838	-0.293'	430 SS Where Exposed	ALONE	ALONE

HOOD INFORMATION

HOOD NO.	TAG	TYPE	FILTER(S)				LIGHT(S)			UTILITY CABINET(S)			FIRE SYSTEM PIPING	HOOD HANGING WGT
			QTY.	HEIGHT	LENGTH	EFFICIENCY @ 9 MICRONS	QTY.	TYPE	WIRE GUARD	LOCATION	SIZE	FIRE SYSTEM		
1	BROILER	Captrate Solo Filter	2	20"	16"	93% See Filter Spec.	0						YES	237 LBS
2	BLODGETT OVEN	SS Baffle with Handles	4	16"	16"	30%	0						YES	248 LBS
3	GRIDDLE	SS Baffle with Handles	3	16"	16"	30%	0						YES	178 LBS
4	FRYER	SS Baffle with Handles	4	16"	16"	30%	0						YES	207 LBS

HOOD OPTIONS

HOOD NO.	TAG	OPTION
1	BROILER	FIELD WRAPPER 2.00' High Front, Left, Right, Back
		RIGHT END PANEL 48" Top Width, 24" Bottom Width, 18" High 430 SS
		LEFT END PANEL 48" Top Width, 24" Bottom Width, 18" High 430 SS
		LEFT END STANDOFF (FINISHED) 1" Wide 48" Long Insulated
2	BLODGETT OVEN	RIGHT END STANDOFF (FINISHED) 1" Wide 48" Long Insulated
		INSULATION FOR BACK OF HOOD
		FIELD WRAPPER 18.00" High Front, Left, Right
		RIGHT QUARTER END PANEL 23" Top Width, 0" Bottom Width, 23" High 430 SS
3	GRIDDLE	LEFT QUARTER END PANEL 23" Top Width, 0" Bottom Width, 23" High 430 SS
		INSULATION FOR BACK OF HOOD
		GFCI DUPLEX OUTLET, 20A 125V - Hood Front Right - Horizontal - Dist from End: 12.00 Dist from Bottom: 6.00
		TIMER BRACKET 16.00" Long - 2" Center to bottom distance
4	FRYER	FIELD WRAPPER 18.00" High Front, Left, Right
		RIGHT QUARTER END PANEL 23" Top Width, 0" Bottom Width, 23" High 430 SS
		LEFT QUARTER END PANEL 23" Top Width, 0" Bottom Width, 23" High 430 SS
		INSULATION FOR BACK OF HOOD

CAPTIVE-AIRE HOODS ARE BUILT IN COMPLIANCE WITH UL 710 AND NFPA 96 AND ARE RECOGNIZED BY ONE OR MORE OF THE FOLLOWING:
 ETL SANITATION LISTED
 ETL LISTED FILE# 3054804-001

CAPTRATE FILTER INFORMATION
 CAPTRATE SOLO STAINLESS BAFFLE FILTER

NOMINAL SIZE (H x W)	ACTUAL DIMENSIONS (H x W x D)	FREE AREA (SQ. FEET)	VELOCITY (FEET PER MINUTE)	STATIC PRESSURE (WATER GAUGE)
16 x 20	15-9/16" x 19-5/8" x 1-7/8"	1.78	150	0.275
16 x 16	15-9/16" x 15-5/8" x 1-7/8"	1.39	150	0.275

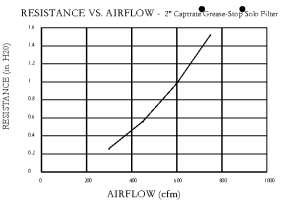
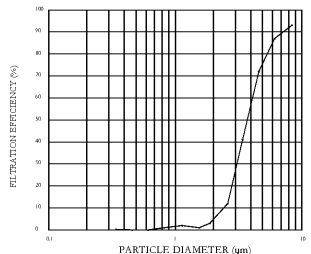
UL LISTED TO MEET UL STANDARD #1046

RESEARCH PRODUCTS FILTER INFORMATION
 KLEEN GUARD STAINLESS BAFFLE FILTER

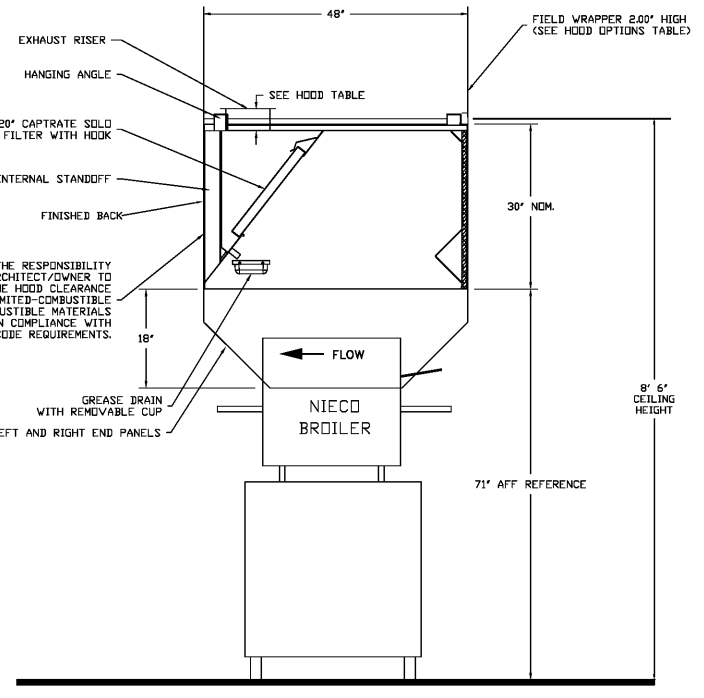
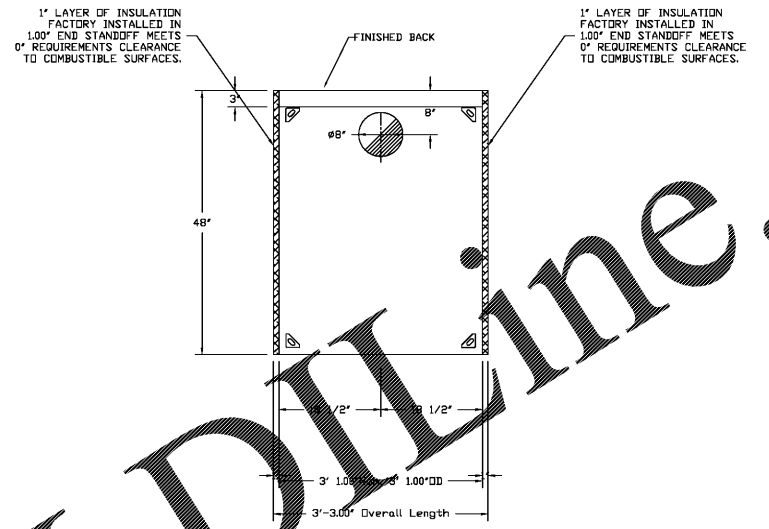
NOMINAL SIZE (H x W)	ACTUAL DIMENSIONS (H x W x D)	FREE AREA (SQ. FEET)	VELOCITY (FEET PER MINUTE)	STATIC PRESSURE (WATER GAUGE)
16 x 20	15-5/8" x 19-5/8" x 1-7/8"	1.73	150	0.20
16 x 16	15-5/8" x 15-5/8" x 1-7/8"	1.35	150	0.20

UL LISTED TO MEET UL STANDARD #1046

SPECIFICATION: CAPTRATE GREASE-STOP SOLID FILTER
 THE CAPTRATE GREASE-STOP SOLID FILTER IS A SINGLE-STAGE FILTER FEATURING A UNIQUE S-BAFFLE DESIGN IN CONJUNCTION WITH A SLOTTED REAR BAFFLE DESIGN, TO DELIVER EXCELLENT FILTRATION EFFICIENCY.
 FILTER IS CONSTRUCTED OF STAINLESS STEEL CONSTRUCTION, AND SIZED TO FIT INTO STANDARD 2" DEEP HOOD CHANNEL(S).
 UNITS SHALL INCLUDE STAINLESS STEEL HANDLES AND A FASTENING DEVICE TO SECURE THE TWO COMPONENTS WHEN ASSEMBLED.
 GREASE EXTRACTION EFFICIENCY PERFORMANCE SHALL REMOVE AT LEAST 75% OF GREASE PARTICLES FIVE MICRONS IN SIZE, AND 90% GREASE PARTICLES SEVEN MICRONS IN SIZE AND GREATER WITH A CORRESPONDING PRESSURE DROP NOT TO EXCEED 1.0 INCHES OF WATER GAUGE.
 THE CAPTRATE GREASE-STOP SOLID WAS TESTED TO ASTM STANDARD ASTM F2519-05.



CAPTRATE FILTERS ARE BUILT IN COMPLIANCE WITH:
 NFPA #96
 NSF STANDARD #2
 UL STANDARD #1046
 INT. MECH. CODE (IMC)



SECTION VIEW - MODEL 4830ND-2 HOOD - #1 (BROILER)

****END PANELS TO SHIP LOOSE WITH NECESSARY HARDWARE TO BE INSTALLED IN THE FIELD****

Order Plans

THIS DRAWING IS PROVIDED FOR REFERENCE ONLY. HOOD CONTRACTOR SHALL SELECT AND CERTIFY ALL EXHAUST/M.U. AIR FANS. ALL SYSTEMS SHALL MEET ALL APPLICABLE REQUIREMENTS OF STATE AND LOCAL CODES AND OTHER REQUIREMENTS AS SHOWN IN DESIGN.

REVISIONS

DATE: 2/24/2017
 DWG.#: 2933344
 DRAWN BY: RDR
 SCALE: 3/4" = 1'-0"
 MASTER DRAWING

SHEET NO.
 1

HARDEE'S T31-MT 4F BATESBURG/LEESVILLE SC
 BATESBURG/LEESVILLE, SC,

CAPTIVE AIR
 National Accounts
 417 North St. Logansport, IN 46847 PHONE: (855) 534-4822 FAX: (714) 722-7213 EMAIL: dan@captiveline.com

WWW.CAPTIVELINE.COM