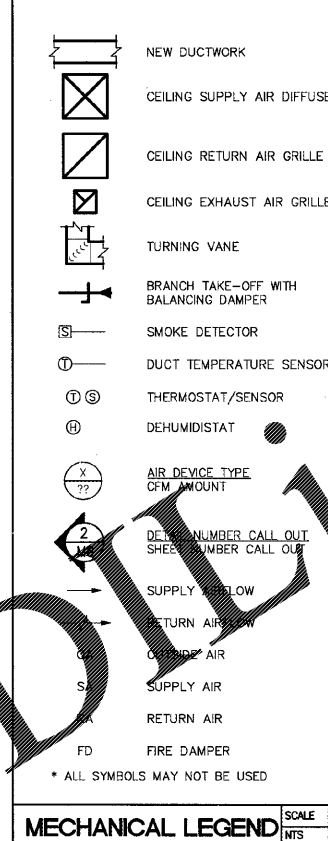


AIR BALANCE SCHEDULE					
UNIT	SUPPLY	RETURN	OUTSIDE	EXHAUST	SERVINGS
RTU-1	3,000	2,000	1,000		BACK KITCHEN
RTU-2	3,200	1,900	1,300		CENTRAL KITCHEN
RTU-3	3,200	1,900	1,300		DINING/RM
EF-1				660	CHARBROILER HOOD (H-1)
EF-2				900	BLODGETT OVEN HOOD (H-2)
EF-3				650	GRIDDLE HOOD (H-3)
EF-4				838	4-VAT FRYER HOOD (H-4)
EF-5				300	MEYER WOMEN'S RESTROOM
TOTAL	9,400	5,800	3,600	3,348	
				252	TOTAL BLDG AIR FLOW

GRILLE AND DIFFUSER SCHEDULE						
MARK	AIR-GUIDE MODEL	FACE SIZE	NECK SIZE	TYPE	MOUNTING	MATERIAL
A	AVP-PLT	24"x24"	PER PLAN	SUPPLY	T-BAR	ALUM.
B	PS-1	24"x24"	PER PLAN	SUPPLY	T-BAR	ALUM.
C	AVP-A-FM	12"x12"	PER PLAN	SUPPLY	SURFACT-BAR	ALUM.
D	RA-AG-T	24"x24"	PER PLAN	RETURN	T-BAR	ALUM.
E	RA-AG-T	12"x12"	PER PLAN	RETURN	T-BAR	ALUM.
F	RA-AG	12"x12"	Ø ROUND	EXHAUST	SURFACE	ALUM.

NOTES:
 1) TRANSITION DUCT AS REQUIRED.
 2) PROVIDE OPPOSED BLADE DAMPERS (ØBD) FOR GRILLES AND DIFFUSERS INSTALLED WITHIN SHEETROCK CEILINGS.
 3) GRILLES AND DIFFUSERS, FLENUM BOXES, AND FLEXIBLE DUCT AVAILABLE FROM HARDEE'S NATIONAL ACCOUNT. CONTACT DANNY GRAY, AIR-GUIDE, (800) 327-8146.
 4) NOT ALL DEVICES MAY BE USED.
 5) ALL "B" DIFFUSERS WITHIN 10' OF A HOOD SHALL HAVE THEIR PATTERN REMOVED OR ARMED IN A DIRECTION VOID OF A HOOD.



- CONTRACTOR SHALL INSTALL CPI PROVIDED REMOTE SENSOR (AND DEHUMIDISTAT WHERE INDICATED) AT 5 FT. ABOVE FINISHED FLOOR AS SHOWN ON PLAN. COORDINATE EXACT LOCATIONS WITH THERMISTAT SENSOR TO BE WIRED TO CPI PROVIDED THERMOSTAT IN CPI BUILDING CONTROL PANEL.
- RTU-1, 2, & 3 THREE SINGLE PACKAGE ROOF TOP UNITS PROVIDED AND INSTALLED BY THE C.C. SEE SHEET M1 FOR MORE INFORMATION. COORDINATE WITH CPI PANEL INSTALLER FOR UNIT CONNECTION TO CPI CONTROL PANEL.
- EC SHALL WIRE FACTORY INSTALLED SMOKE DETECTOR IN RETURN AIR DUCT. DETECTOR TO DE-ENERGIZE RTU SUPPLY AIR. DETECTOR TO BE ACTIVATED (MC 2015-606.4, 606.4.1). DETECTOR TO BE INSTALLED TO CPI PANEL. MC SHALL PROVIDE, INSTALL AND WIRE VISUAL/AUDIBLE ALARM FOR DUCT SMOKE DETECTOR WITH MANUAL RESET. COORDINATE EXACT LOCATION WITH CONSTRUCTION MANAGER. MANUAL EMERGENCY SHUTDOWN SWITCH PREWIRED IN CPI PANEL. INSTALL SMOKE DETECTOR TEST SWITCH IN MANAGER'S OFFICE.
- H-1 BROILER EXHAUST HOOD - SEE HOOD PLANS. HOOD SUPPLIER SHALL FURNISH AND HVAC CONTRACTOR SHALL INSTALL WHERE SHOWN ON PLANS. SEE DETAIL ON SHEET H1.
- H-2 BLODGETT OVEN EXHAUST HOOD - SEE HOOD PLANS. HOOD SUPPLIER SHALL FURNISH AND HVAC CONTRACTOR SHALL INSTALL WHERE SHOWN ON PLANS. SEE DETAIL ON SHEET H2.
- H-3 GRIDDLE EXHAUST HOOD - SEE HOOD PLANS. HOOD SUPPLIER SHALL FURNISH AND HVAC CONTRACTOR SHALL INSTALL WHERE SHOWN ON PLANS. SEE DETAIL ON SHEET H2.
- CONTRACTOR SHALL INSTALL OWNER SUPPLIED CAPTIVE AIR FACTORY BUILT GREASE DUST. DUCT SHALL MEET NFPA96. THE DOUBLE WALL DUCTING SHALL HAVE AN OUTER JACKET OF ALUMINUM STEEL .025" THICK IN 5 INCH THROUGH 24" DIAMETERS AND .034" THICK FOR LARGER DIAMETERS. THE INNER LINER SHALL BE TYPE 304 STAINLESS STEEL WITH A NOMINAL THICKNESS OF .035" FOR ALL SIZES. FIBER INSULATED EXHAUST SYSTEM (MODEL IPS) SHALL HAVE FIBER INSULATION BETWEEN THE WALLS OF 1 INCH THICK.
- GENERAL CONTRACTOR TO UNDERCUT DOOR 3/4" FOR TRANSFER AIR.
- EF-4 TOILET EXHAUST PROVIDED BY OWNER - SEE HOOD PLANS.
- H-4 FRYER EXHAUST HOOD - SEE HOOD PLANS. SUPPLIER SHALL FURNISH AND HVAC CONTRACTOR SHALL INSTALL WHERE SHOWN ON PLANS. SEE DETAIL ON SHEET H2.
- CONTRACTOR SHALL INSTALL CPI PROVIDED DUCT TEMPERATURE SENSORS IN SUPPLY DUCT FOR RTUS AND TIE TO CPI BUILDING CONTROL PANEL. FIELD COORDINATE EXACT REQUIREMENTS BEFORE STARTING WORK.
- INSTALL MARKET MODEL F3384DRP 2000W CEILING HEATER (PROVIDED BY OWNER) OPERATING ON 208 VOLT/1 PHASE WITH TB3380 2"x2" T-BAR MOUNTING KIT. PROVIDE AND INSTALL LINE VOLTAGE HEATING THERMOSTAT. LOCATE ABOVE CASH REGISTER COUNTER WITH LOCKING COVER.
- FURNISH AND INSTALL VISUAL/AUDIBLE ALARM WITH RESET BUTTONS PER LOCAL CODES. MOUNT AT 84" AFF.
- FLY FAN BY KITCHEN EQUIPMENT SUPPLIER.
- FLARE SUPPLY AND RETURN DUCTS AS REQUIRED FROM RTU OPENINGS TO DUCT SIZES SHOWN ON PLANS.
- CONTRACTOR SHALL INSTALL OWNER PROVIDED DEHUMIDISTAT TO CONTROL REHEAT RTU. MOUNT CONTROL AT 96" AFF.
- BOD AT 13'-4".
- MECHANICAL CONTRACTOR TO PULL 2 WIRE SHIELDED SENSOR CABLE AND INSTALL CUSTOMER PROVIDED TEMPERATURE SENSOR.
- WALL MOUNTED ANSUL FIRE SUPPRESSION TANKS. SEE HOOD SHEETS H2 AND H3.
- M.C. SHALL INSTALL WALL MOUNTED ANALOX MODEL NUMBER AX60+ CO2 MONITORING SYSTEM AT 48" AFF. SYSTEM SHALL BE PROVIDED BY THE OWNER. SEE GENERAL CO2 MONITORING SYSTEM NOTE BELOW.

KEYED NOTES SCALE NTS 4

THE INTERNATIONAL MECHANICAL CODE SECTION 702.2 STATES THAT COMBUSTION AIR FOR GAS-BURNING APPLIANCES MAY BE OBTAINED FROM THE ROOM THE APPLIANCE IS IN IF THE ROOM IS AN UNCONFINED SPACE. IT DEFINES AN UNCONFINED SPACE AS, "A SPACE HAVING A VOLUME NOT LESS THAN 50 CUBIC FEET PER 1,000 BTU/HR OF THE AGGREGATE INPUT RATING OF ALL THE APPLIANCES INSTALLED IN THAT SPACE. ROOMS COMMUNICATING DIRECTLY WITH THE SPACE IN WHICH THE APPLIANCES ARE INSTALLED, THROUGH OPENINGS NOT FURNISHED WITH DOORS, ARE CONSIDERED A PART ON THE UNCONFINED SPACE."

COMBUSTION AIR CALCULATION SCALE NTS 5

HOOD SYSTEM - EXHAUST SYSTEM MUST BE LIGHT TEST AND APPROVED AT ROUGH-IN STAGE. (MC 2015-507.6.1) HVAC CONTRACTOR SHALL INSTALL EXHAUST SYSTEM WHERE SHOWN ON PLANS.

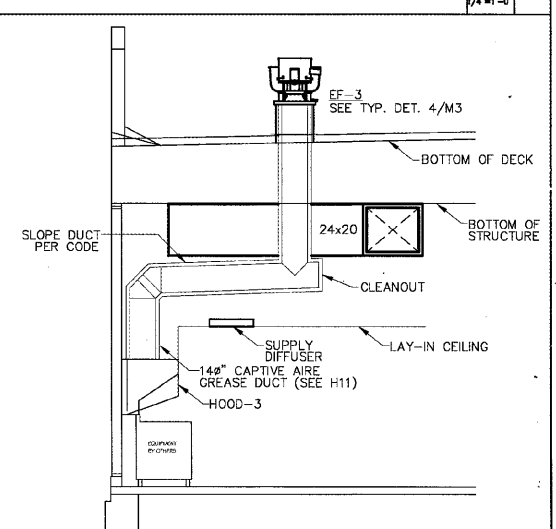
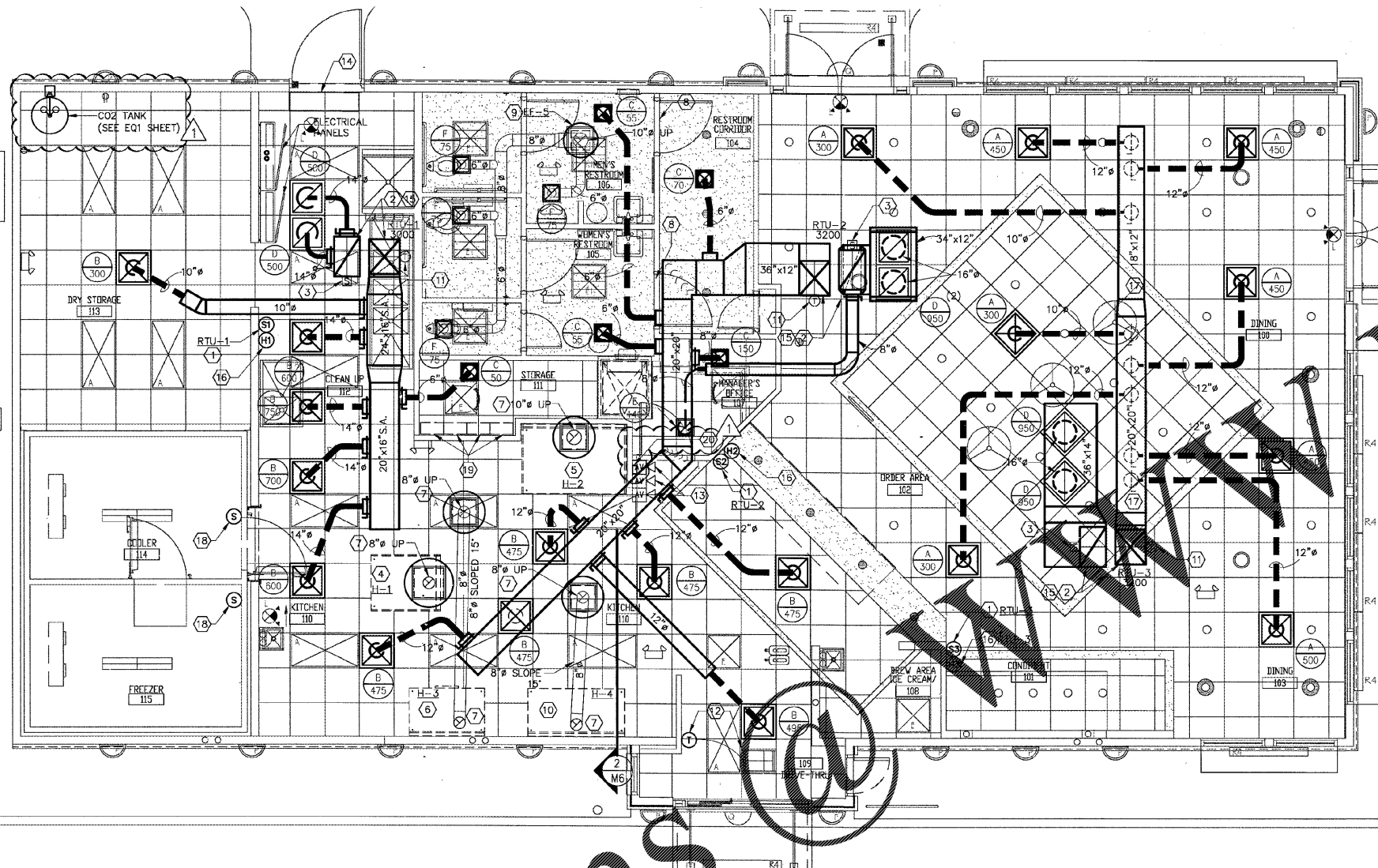
PRIOR TO FINAL C.O., HOOD SYSTEM MUST BE TESTED AND APPROVED TO INCLUDE SHUT DOWN, EXHAUST, FRESH AIR AND MICRO SWITCH CONNECTED INTO ALARM SYSTEM IF REQUIRED. (MC 2015-507.6)

HOOD SYSTEM EXHAUST SCALE NTS 6

ANALOX AX60+ CO2 MONITORING SYSTEM IS A WALL-MOUNTED GAS AND SAFETY DEVICE USED FOR MONITORING CARBON DIOXIDE. THE CO2 SENSOR IS SET BY DEFAULT TO TRIGGER A LOW-LEVEL ALARM AT 1.5% CO2, AN EVACUATION ALARM OF 3% CO2, AND A TIME-WEIGHTED AVERAGE ALARM OF 0.5% CO2 MEASURED OVER EIGHT HOURS. THE CO2 SENSOR IS SET BY DEFAULT TO TRIGGER LOW-GOING ALARMS AT BOTH 19.5% AND AT 18% AND HIGH-GOING ALARM AT 23%. WARNINGS ARE ANNOUNCED BY HIGH-VISIBILITY STROBE LIGHTS AND HIGH-VOLUME SOUNDERS.

SYSTEMS COMES COMPLETE WITH CENTRAL DISPLAY WITH 2 RELAYS RATED FOR 1 A/30 V AC/DC, ALARM STROBE DEVICE, AND CO2 SENSOR.

CO2 MONITORING SYSTEM SCALE NTS 7



Order Plans

NRD national restaurant designers
 ARCHITECTS & ENGINEERS
 3005 CARRINGTON MILL BLVD. SUITE 105
 MORRISVILLE, NORTH CAROLINA 27560
 PH: 919 544 7257 FAX: 919 544 5399
 A Division of LHMAT Associates

UNIT ASSOCIATES, P.A.
 REGISTERED PROFESSIONAL ENGINEERS
 SOUTH CAROLINA
 LICENSE NO. 11000
 REGISTERED PROFESSIONAL ENGINEERS
 NORTH CAROLINA
 LICENSE NO. 11000

Hardee's
 HARDEE'S TAKEAWAY
 145 OAKRIDGE STREET
 BATESBURG-LEESVILLE, SOUTH CAROLINA 29804

REVISIONS		DATE
NO.	DESCRIPTION	5/22/2017
1	COORDINATION	

HVAC PLAN	
DRAWN BY	BT
CHECKED BY	MJM
APPROVED BY	

CKE SITE ID:
 DATE: 2-28-17

SHEET NUMBER:
M2