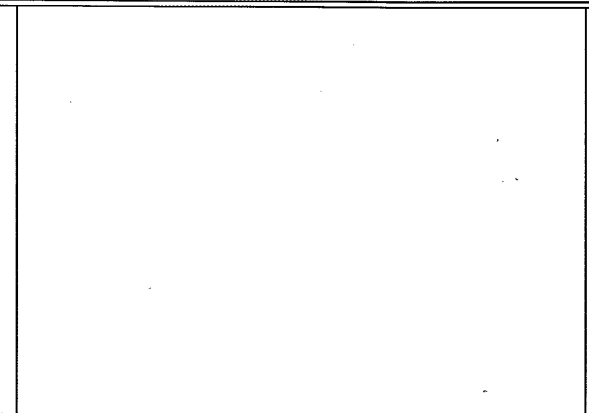
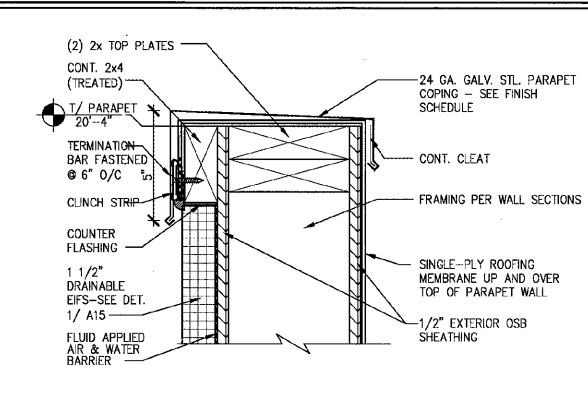


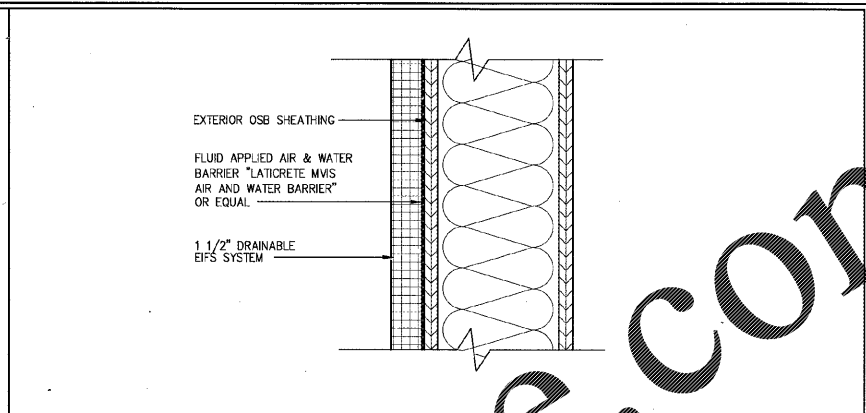
TOWER PARAPET COPING SCALE: 3"=1'-0" 13



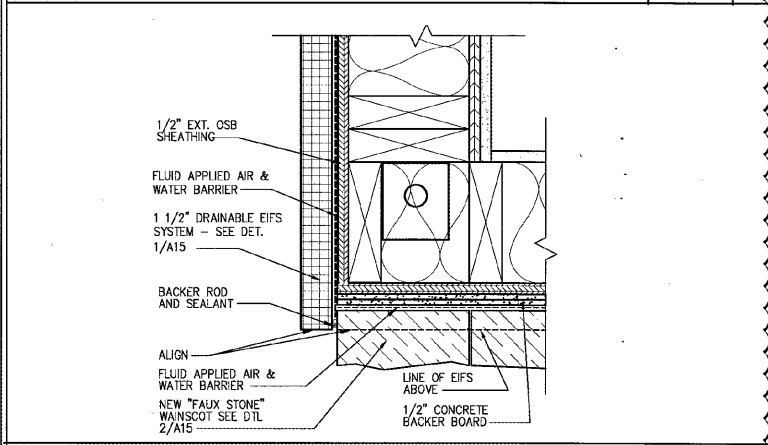
PARAPET COPING @ E.I.F.S. SCALE: 3"=1'-0" 9



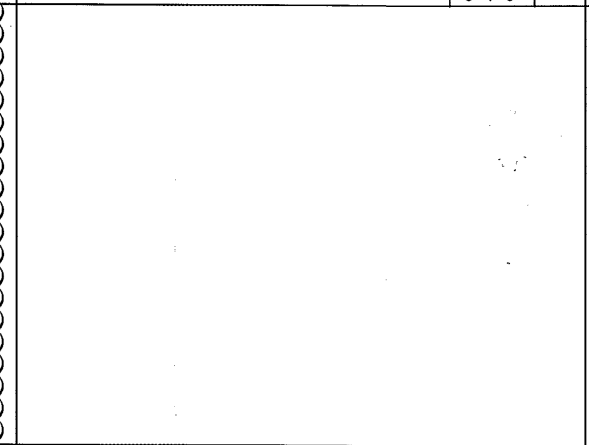
TYPICAL E.I.F.S. SYSTEM SCALE: 3"=1'-0" 5



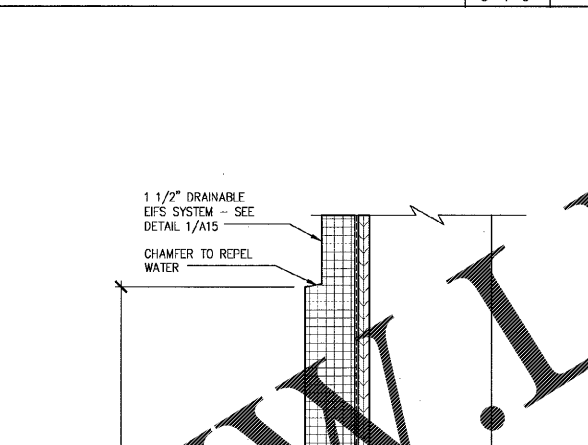
TYPICAL \"FAUX\" STONE SYSTEM SCALE: 3"=1'-0" 1



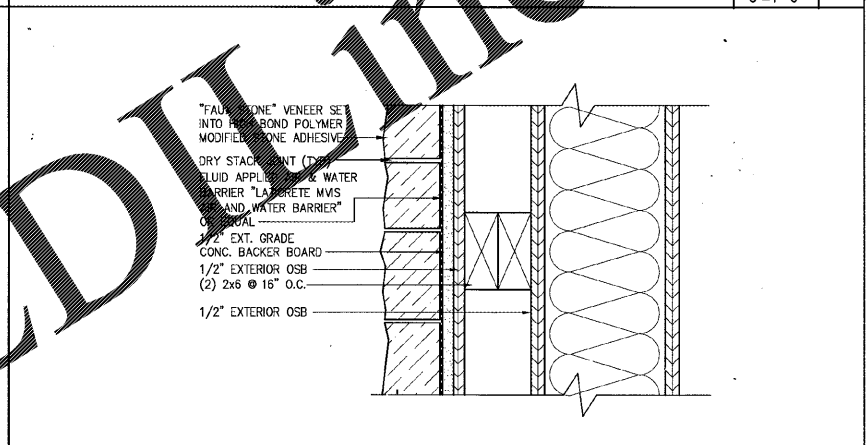
OUTSIDE CORNER AT STONE TO E.I.F.S. WAINSCOT DETAIL SCALE: 3"=1'-0" 14



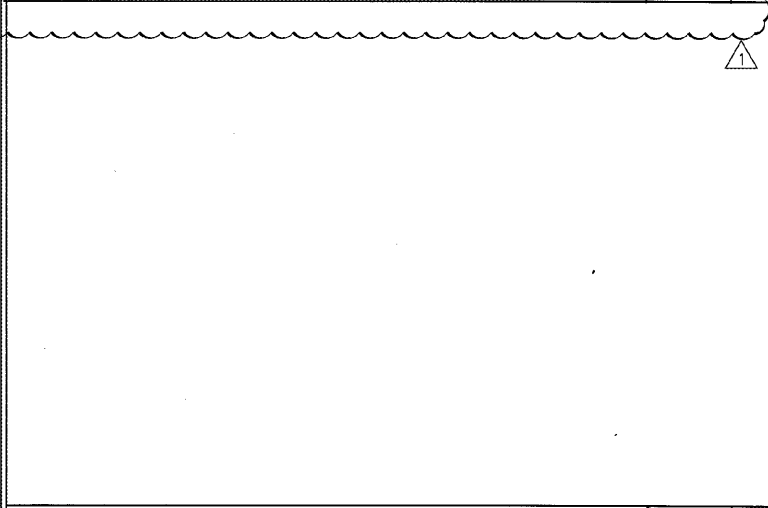
24\"/>



TYPICAL \"FAUX\" STONE SYSTEM SCALE: N.T.S. 2



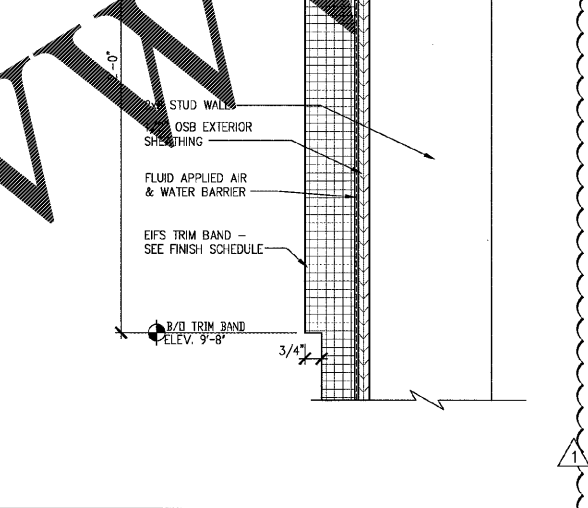
24\"/>



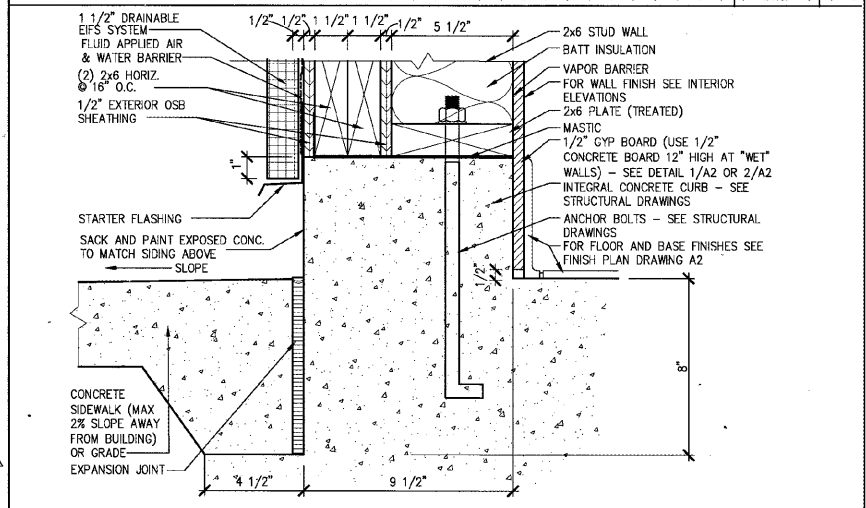
\"FAUX\" STONE WAINSCOT / E.I.F.S. SCALE: 3"=1'-0" 16



\"FAUX\" STONE BASE SCALE: 3"=1'-0" 12



\"FAUX\" STONE BASE AT PILASTERS SCALE: 3"=1'-0" 8



E.I.F.S. BASE SCALE: 3"=1'-0" 7

NRD Project # 16399
NRD ARCHITECTS & ENGINEERS
 3005 CARRINGTON MILL BLVD. SUITE 105
 MORRISVILLE, NORTH CAROLINA 27660
 PH: 919 544 7251 FAX: 919 544 9399
 A Division of LMHT Associates

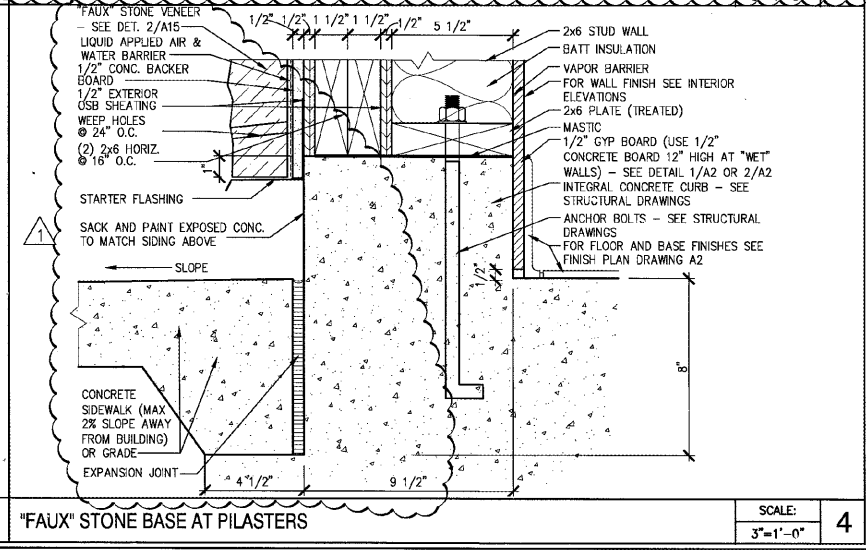
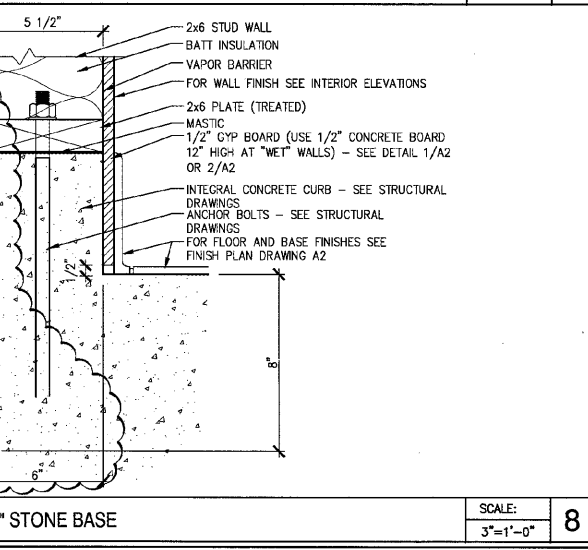
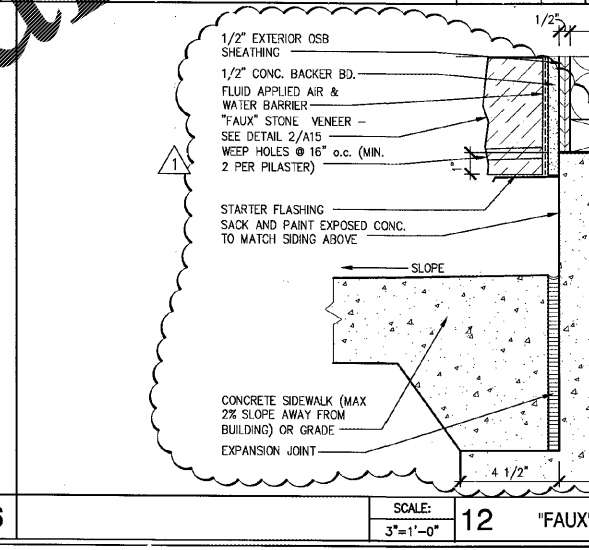
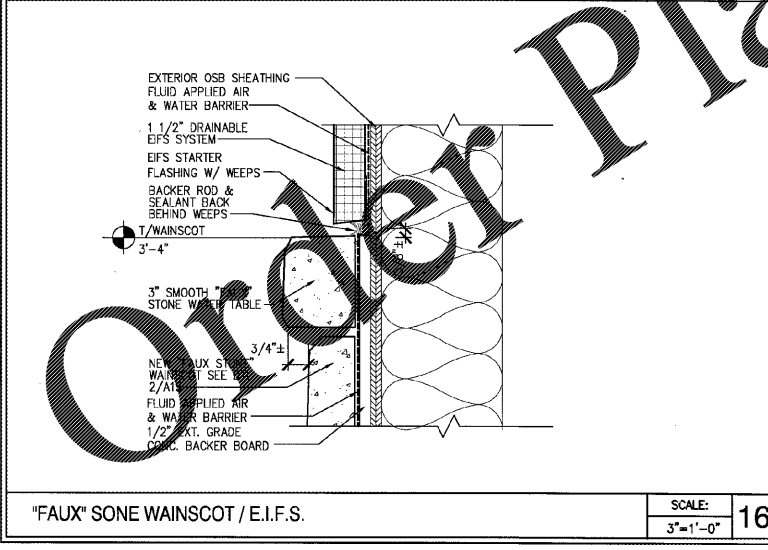
STATE OF SOUTH CAROLINA
 GLEN LEHMANN, NC
 MORRISVILLE, NC 27660
 LICENSE NO. 9285
 REGISTERED PROFESSIONAL ARCHITECT

STATE OF SOUTH CAROLINA
 LMHT ASSOCIATES, P.A.
 MORRISVILLE, NC 27660
 LICENSE NO. 04400
 REGISTERED PROFESSIONAL ARCHITECT

REVISIONS

NO.	DESCRIPTION	DATE
1	COORDINATION	5/22/2017

DATE: 2-28-17
 SHEET NUMBER: **A15**



\"FAUX\" STONE WAINSCOT / E.I.F.S. SCALE: 3"=1'-0" 16

\"FAUX\" STONE BASE SCALE: 3"=1'-0" 12

\"FAUX\" STONE BASE AT PILASTERS SCALE: 3"=1'-0" 8

E.I.F.S. BASE SCALE: 3"=1'-0" 7

Order Plans @ www.LDOnline.com