

ELEVATION T

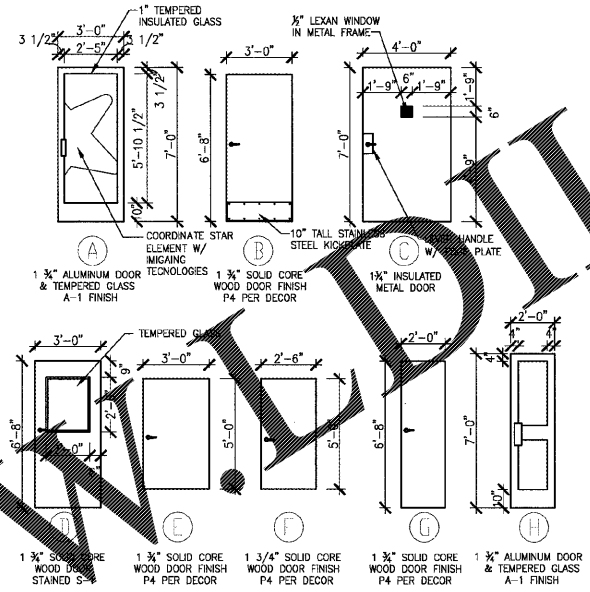
SCALE: 1/4"=1'-0"

ELEVATION U

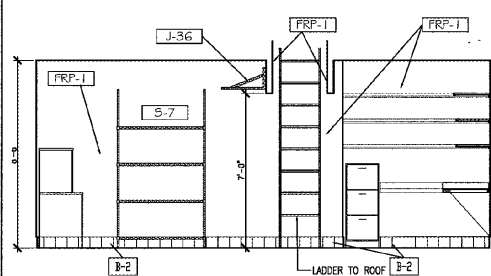
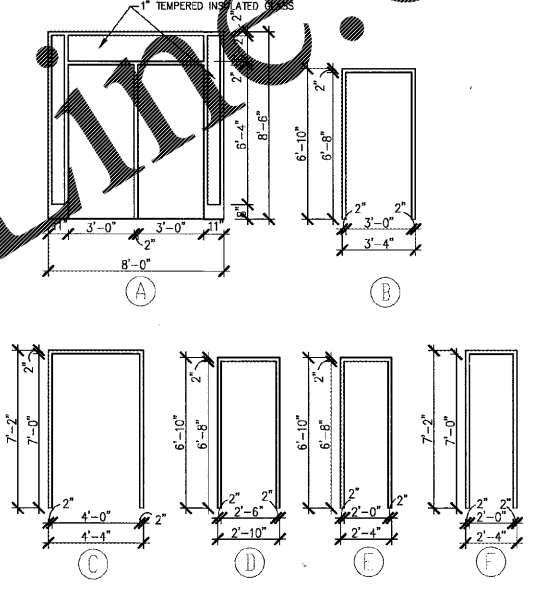
SCALE: 1/4"=1'-0"

DOOR SCHEDULE		NOTE: DOOR & WINDOW FRAME SIZES ARE TO BE FIELD VERIFIED PRIOR TO FABRICATION	
MARK	DOOR FINISHED OPENING SIZE	MATERIAL	NOTES
100A	3'-0" x 7'-0" (2)	ALUMINUM DOOR w/TEMPERED GLASS AND ALUMINUM FRAME	A A-1 A A-1 1 WINDOW FILM - BY IMAGING TECHNOLOGIES
100B	3'-0" x 7'-0" (2)	ALUMINUM DOOR w/TEMPERED GLASS AND ALUMINUM FRAME	A A-1 A A-1 1 WINDOW FILM - BY IMAGING TECHNOLOGIES
103A	2'-0" x 6'-8"	HOLLOW METAL FRAME	G WC-1 E P-4 3
104A	3'-0" x 6'-8"	HOLLOW METAL FRAME	B WC-1 B P-4 2
104B	3'-0" x 5'-0"	HOLLOW METAL FRAME	E WC-1 B P-4 4 TOILET STALL HANG DOOR CENTERED IN FRAME
104C	2'-6" x 5'-0"	HOLLOW METAL FRAME	F WC-1 D P-4 4 TOILET STALL HANG DOOR CENTERED IN FRAME
105A	3'-0" x 6'-8"	HOLLOW METAL FRAME	B WC-1 B P-4 2
105B	3'-0" x 5'-0"	HOLLOW METAL FRAME	E WC-1 B P-4 4 TOILET STALL HANG DOOR CENTERED IN FRAME
106	3'-0" x 6'-8"	HOLLOW METAL FRAME	D S-1 B P-4 3
108	2'-0" x 7'-0"	ALUMINUM DOOR w/TEMPERED GLASS AND ALUMINUM FRAME	H A-1 F A1 6
111	4'-0" x 7'-0"	HOLLOW METAL FRAME	C P-4 C P-4 5 SUPPLIED AND INSTALLED BY GC - COORDINATE WITH OWNER/ SECURITY DEPT.

DOOR TYPES



FRAME TYPES



ELEVATION V

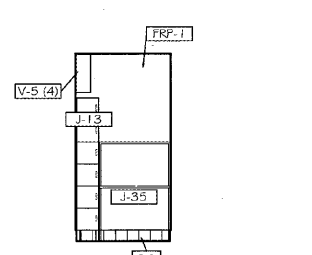
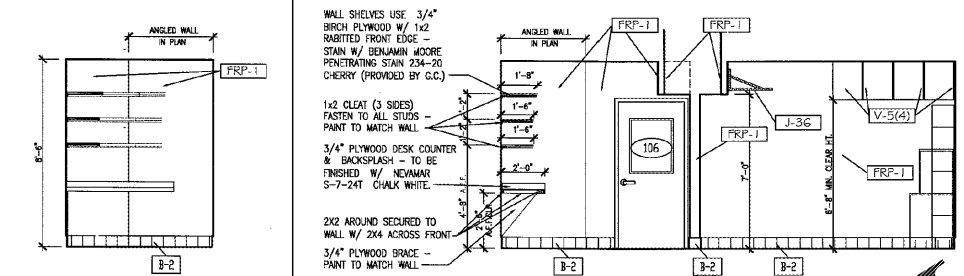
SCALE: 1/4"=1'-0"

ELEVATION W

SCALE: 1/4"=1'-0"

ELEVATION X

SCALE: 1/4"=1'-0"

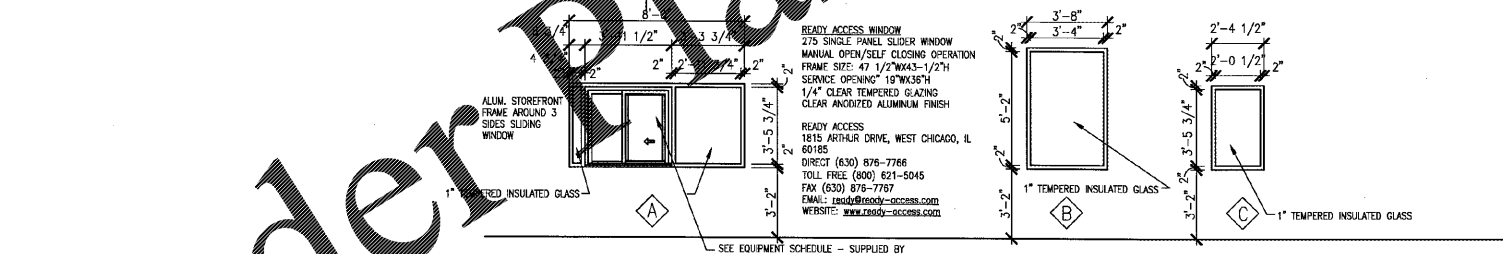
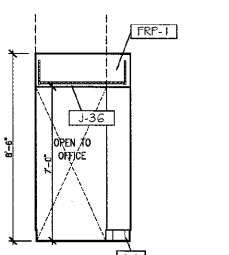


ELEVATION Y

SCALE: 1/4"=1'-0"

ELEVATION Z

SCALE: 1/4"=1'-0"



WINDOW SCHEDULE			
MARK	ROUGH OPENING SIZE	MATERIAL	REMARKS
⊠	8'-0"x3'-9 3/4"	ALUMINUM FRAME	A-1 SEE SHT. A2 DRIVE THRU WINDOW SHALL BE SELF CLOSING
⊠	3'-8" x 5'-8"	ALUMINUM FRAME	A-1 SEE SHT. A2
⊠	2'-4 1/2" x 3'-9 3/4"	ALUMINUM FRAME	A-1 SEE SHT. A2

WINDOW SCHEDULE

HARDWARE SCHEDULE

(with push/pull toilet doors)

<p>HARDWARE SET NO. 1</p> <p>1 FLOOR-MOUNTED DOOR STOP #FS434 (BY G.C.)</p> <p>ALL DOOR HARDWARE FURNISHED IN STANDARD DOOR PACKAGE INCLUDING RIM PANIC EXT DEVICE</p> <p>1 4040 REGULAR CLOSER WITH 18TJ</p> <p>HARDWARE SET NO. 2</p> <p>1 1/2 PR. HINGES FBB-179 4 1/2 X 4 1/2</p> <p>1 CLOSER 1461T SERIES</p> <p>1 KICKPLATE 20 GAUGE STAINLESS STEEL 10x34"LOW</p> <p>1 CAST PULL #EN</p> <p>1 PUSH PLATES #HOR 3"x 12"</p> <p>1 WALL MOUNTED DOOR STOP #WS406</p> <p>1 WALL-MOUNTED HANDICAP/BRAILLE SIGN Ø 60" AFF</p> <p>HARDWARE SET NO. 3</p> <p>1 1/2 PR. HINGES FBB-179 4 1/2 X 4 1/2</p> <p>1 CLOSER 1460 SERIES</p> <p>1 WALL-MOUNTED DOOR STOP #WS406</p> <p>1 #CL3651 LEVER LOCKSET W/STRIKE</p> <p>HARDWARE SET NO. 4</p> <p>1 1/2 PR. HINGES FBB-179 4 1/2 X 4 1/2</p> <p>1 CLOTHES HOOK & DOOR BUMPER B-212</p> <p>1 #CL3620 LEVER LOCKSET W/STRIKE</p> <p>HARDWARE SET NO. 5</p> <p>1 CONTINUOUS HALF-SURFACE HINGE WITH THREE BLOCK-OUT PLATES ON DOOR</p> <p>1 CLOSER: 4040 H-CUSH</p> <p>1 ARMOR PLATE 36" X 48" WITH S.S. SCREWS</p> <p>1 FLOOR-MOUNTED DOOR STOP #FS434</p> <p>1 SB-01-0048 STEEL SECURITY BAR (OR OPTIONAL PHOENIX D-20 SECURITY BAR)</p> <p>1 THRESHOLD w/ VINYL WEATHERSTRIP 179Avx48</p> <p>1 RAINDRIP 346 C 48"</p> <p>1 ADAMS-RITE PANIC BAR OPTION: RUSSWIN RIM CYLINDER TO MATCH MGR. OFFICE DOOR-VERIFY W/REP.</p> <p>HARDWARE SET NO. 6</p> <p>1 FLOOR-MOUNTED DOOR STOP #FS434 (BY G.C.)</p> <p>ALL DOOR HARDWARE FURNISHED IN STANDARD DOOR PACKAGE INCLUDING INTERIOR THUMB TURN DEAD BOLT LOCK ON INSIDE, & PUSH/PULL W/NO EXTERIOR LOCKSET.</p> <p>1 4040 REGULAR CLOSER WITH 18TJ</p>	<p>IVES</p> <p>VISTAWALL</p> <p>OR KAWNEER</p> <p>LCN</p> <p>DARK BRONZE ANODIZED ALUM.</p> <p>DARK BRONZE ANODIZED ALUM.</p> <p>STANLEY</p> <p>LCN</p> <p>IVES</p> <p>CORBIN/RUSSWIN</p> <p>DARK BRONZE</p> <p>DK BRONZE</p> <p>DK BRONZE</p> <p>DK BRONZE</p> <p>MARKAR #HS-203 OR HAGER/ROTON #780-053HD OR PEMKO #HSHD</p> <p>LCN</p> <p>BALDWIN OR BURNS</p> <p>IVES</p> <p>EXIT SECURITY (SEE NOTE 2)</p> <p>PEMKO</p> <p>PEMKO</p> <p>ADAMS RITE</p> <p>IVES</p> <p>VISTAWALL OR KAWNEER</p> <p>LCN</p> <p>CLEAR ANODIZED ALUM.</p> <p>CLEAR ANODIZED ALUM.</p>
---	--

DOOR SCHEDULE

SCALE: 1/4"=1'-0"

Order Plans @ WWW.WWLDLINE.COM

national restaurant designers
INRDI
ARCHITECTS & ENGINEERS
 3005 CARRINGTON MILL RD., SUITE 105
 MORRISVILLE, NORTH CAROLINA 27560
 ph: 919 544 7251 fax: 919 544 9389
 A Division of LMHT Associates

STATE OF SOUTH CAROLINA REGISTERED ARCHITECT
 GLEN I. LEVINSKY, INC.
 License No. 02265

Star Hardeen
 HARDEEN'S T2AKE PROTOTYPE
 143 CHERRY STREET
 DATESBORO, SOUTH CAROLINA 29544

NO.	DATE	REVISIONS DESCRIPTION

INTERIOR ELEVATIONS
 DRAWN BY: [] CHECKED BY: []
 DATE: 2-28-17

CKE SITE ID:
 DATE: 2-28-17
 SHEET NUMBER:
A12