

**NRD** ARCHITECTS & ENGINEERS  
 SUITE 105  
 3005 CARRINGTON MILL BLVD.  
 NORTH CAROLINA 27569  
 PH: 919 544 7251 FAX: 919 544 9599  
 A Division of LHM Associates

STATE OF SOUTH CAROLINA  
 GLEN LEHMANN  
 ARCHITECTS & ENGINEERS  
 NO. 2628  
 REGISTERED ARCHITECT

STATE OF SOUTH CAROLINA  
 LHM ASSOCIATES  
 ARCHITECTS & ENGINEERS  
 NO. 62405  
 REGISTERED ARCHITECT

**StarHarden**  
 CHAUNCEY H. HARDEN, III  
 ARCHITECT

HARDEE'S T24KE PROTOTYPE  
 143 CHURCH STREET  
 BATESBURG-LEESVILLE, SOUTH CAROLINA 29634

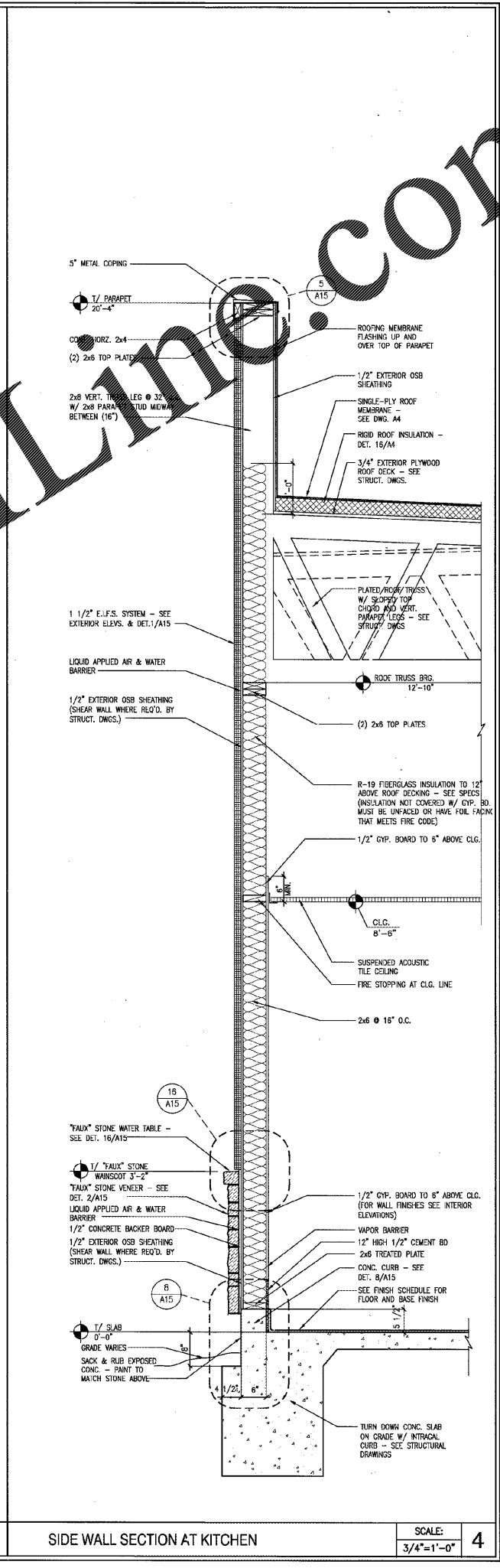
NO.	DATE	DESCRIPTION
1	5/22/2017	COORDINATION

CHECKED BY #1	CHECKED BY #2	APPROVED BY

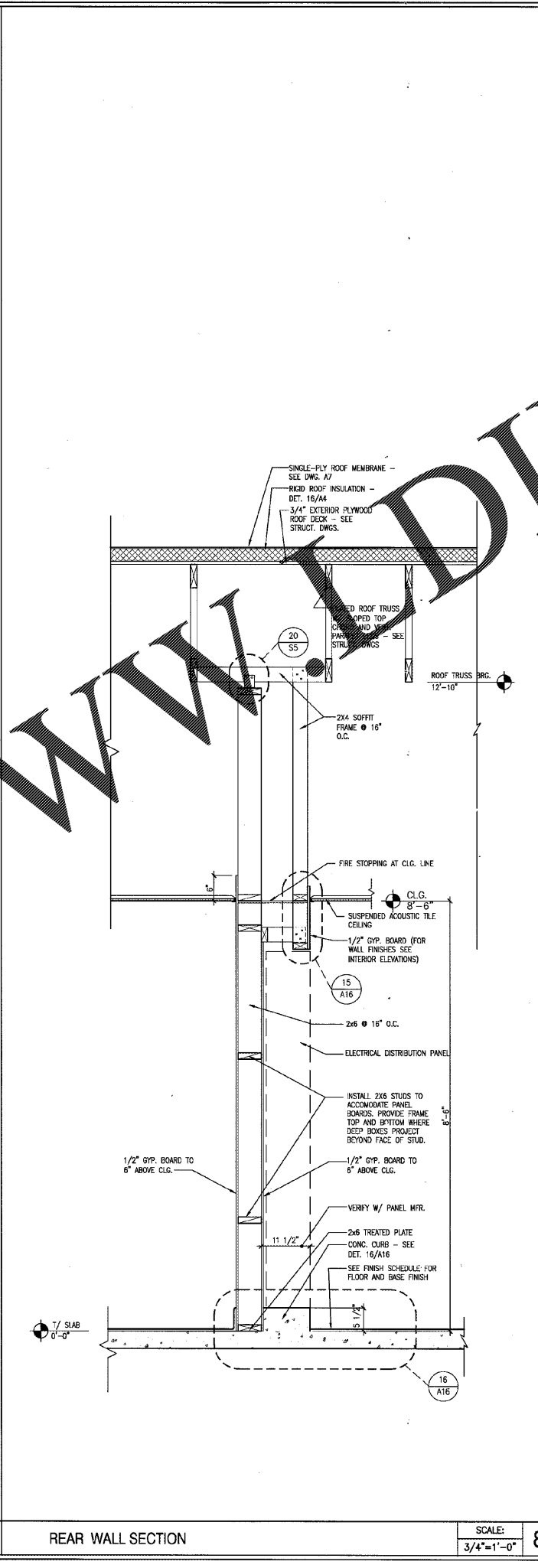
CHE SITE ID: \_\_\_\_\_

DATE: 2-28-17

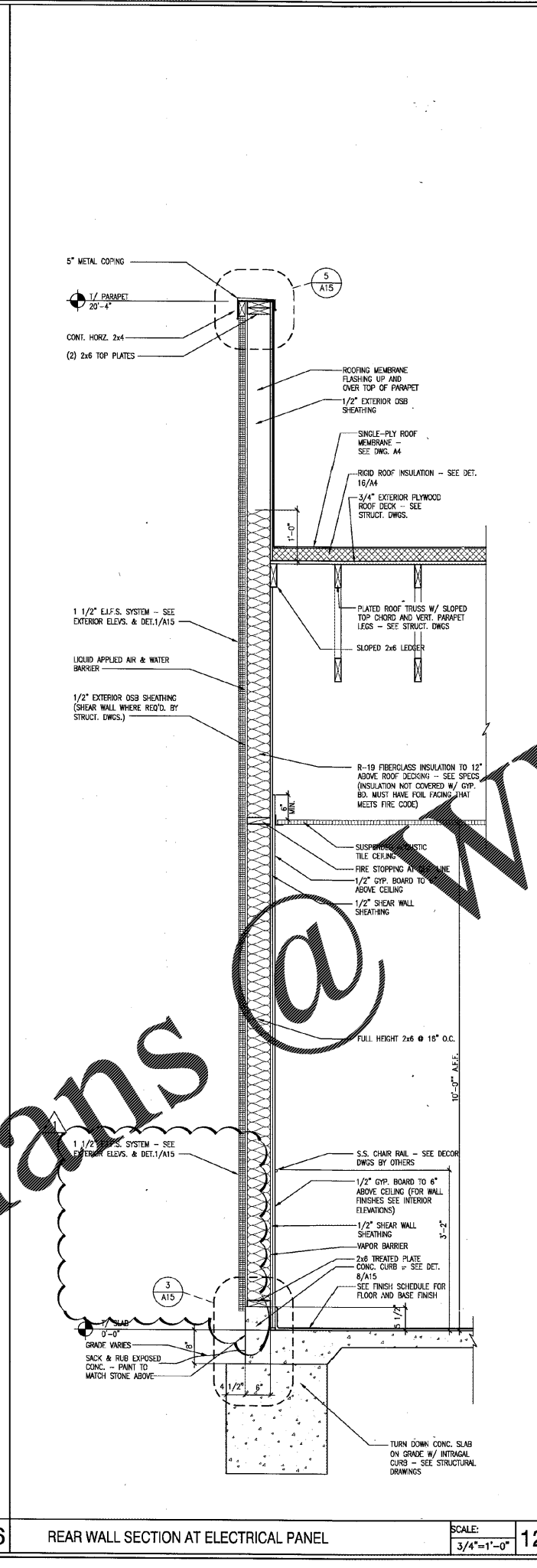
SHEET NUMBER: **A8**



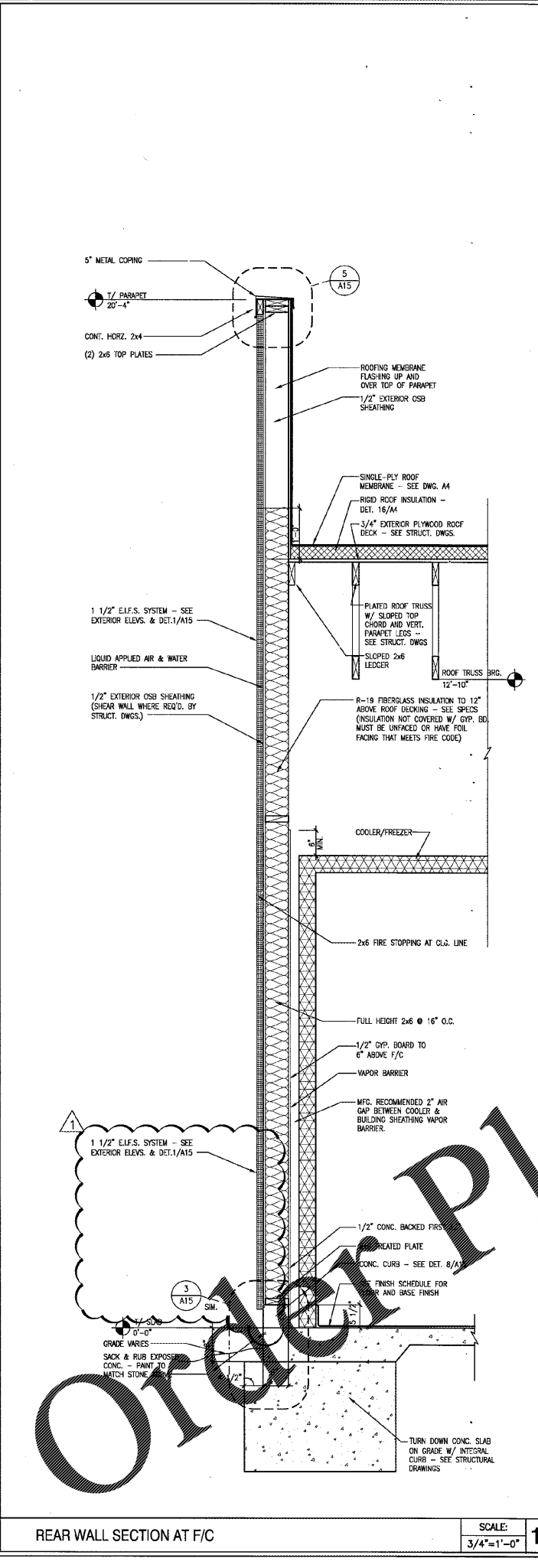
SIDE WALL SECTION AT KITCHEN SCALE: 3/4"=1'-0" 4



REAR WALL SECTION SCALE: 3/4"=1'-0" 12



REAR WALL SECTION AT ELECTRICAL PANEL SCALE: 3/4"=1'-0" 16



REAR WALL SECTION AT F/C SCALE: 3/4"=1'-0" 16

Order Plans @ WWW.DI.LINE.COM