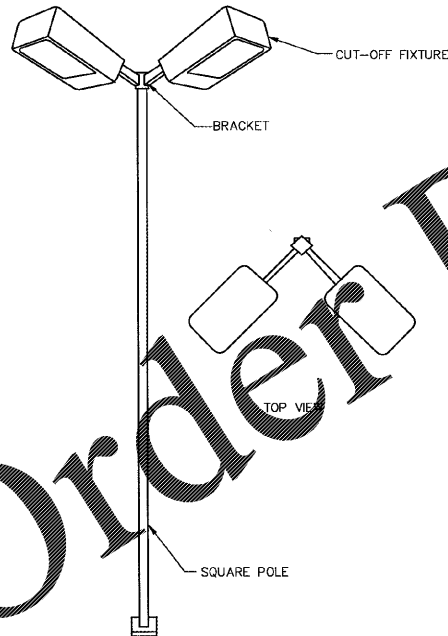


D/T DOOR GUARDRAIL

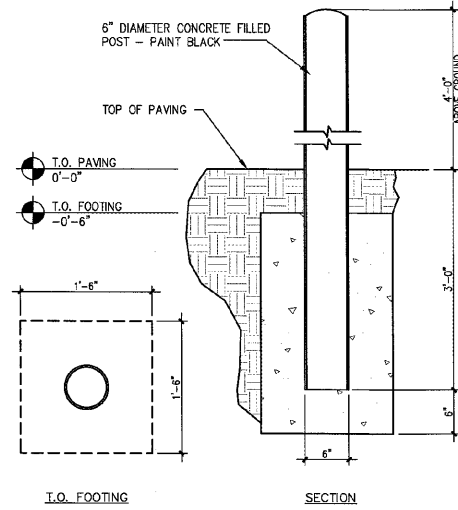
SCALE: 3/4"=1'-0" 14

- NOTES:
1. LIGHT FIXTURE(S) ARE TO ILLUMINATE SITE & DRIVES WITH NO SPILLAGE ON ADJACENT PROPERTIES. THIS WORK SHALL BE THE RESPONSIBILITY OF THE INSTALLING CONTRACTOR. ALL PARKING LOT LIGHTS ARE TO BE AIMED AND FOCUSED AFTER DARK BY THE ELECTRICAL SUB-CONTRACTOR WITH THE OWNER AND JOB SUPERINTENDENT PRESET.
 2. SEE CIVIL AND ELECTRICAL DRAWINGS FOR LIGHT LOCATIONS.
 3. SEE DETAIL 12/SD1 FOR YARD LIGHT FOUNDATIONS.
 4. LIGHT FIXTURES, POLES, BRACKETS, BASE PLATES, AND 4 ANCHOR BOLTS AND 8 NUTS AND WASHERS PER POLE SUPPLIED BY OWNER. INSTALLED BY GEN. CONTRACTOR. ANCHOR BOLTS ARE AVAILABLE TO BE SHIPPED AHEAD.
 5. THE ELECTRICAL SUB-CONTRACTOR IS TO INSTALL SITE LIGHT POLES ON LEVELING NUTS WITH FLAT WASHERS ON TOP OF LEVELING NUTS. FLAT WASHERS AND LOCK WASHERS WILL ALSO BE USED UNDER THE LOCK NUTS. THE ANCHOR BOLTS WILL NOT EXTEND MORE THAN 1" ABOVE LOCK NUTS. THE TOPS OF BASES ARE TO BE GROUDED AND CROWNED WITH NON-SHRINKING GROUT TO THE BOTTOM OF THE POLE BASE PLATES WITH A 1/4" DIAMETER WEEP HOLE.



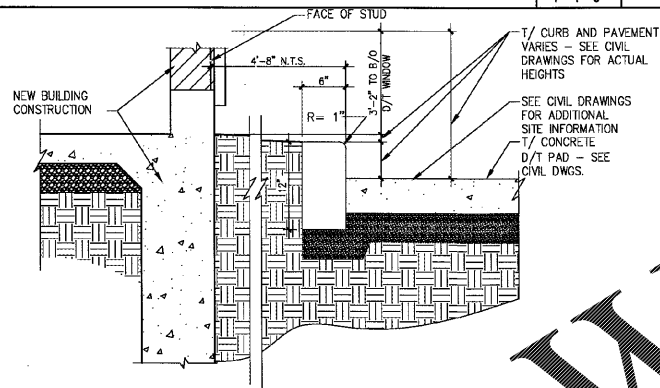
YARD LIGHT

SCALE: NTS 16



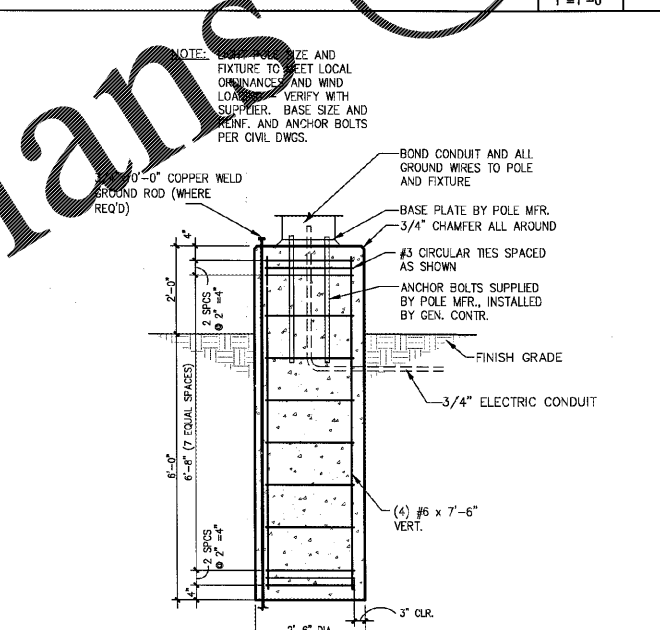
TYPICAL BOLLARD

SCALE: 1"=1'-0" 9



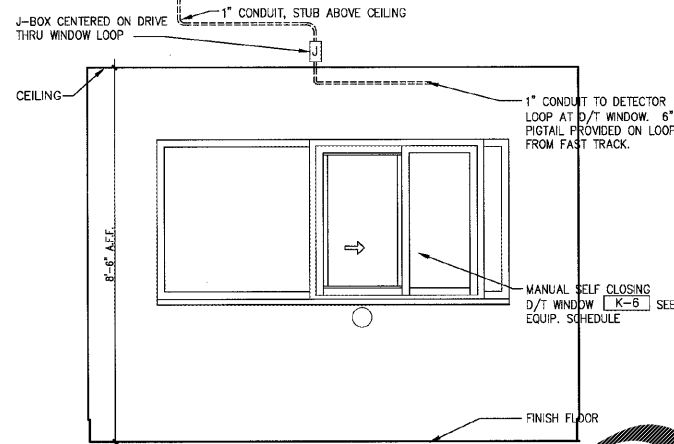
DRIVE-THRU CURB AT MAIN BUILDING LINE

SCALE: 1"=1'-0" 11



YARDLIGHT FOOTING

SCALE: NTS 12

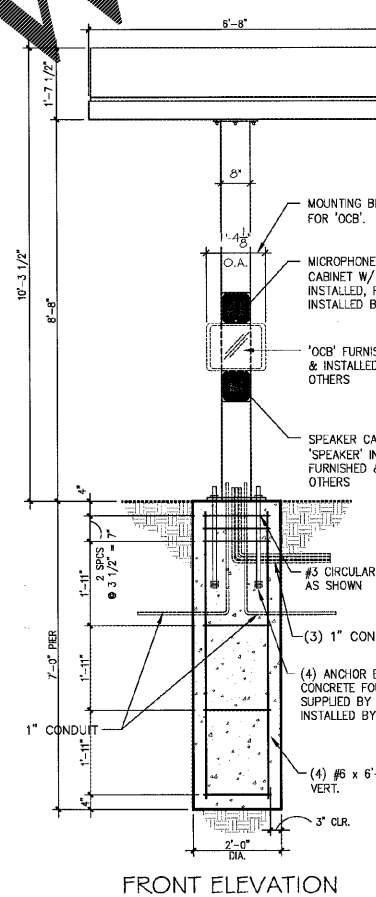
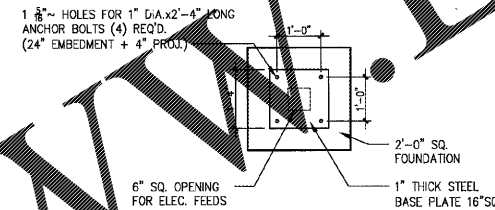


INTERIOR DRIVE-THRU WINDOW ELEVATION

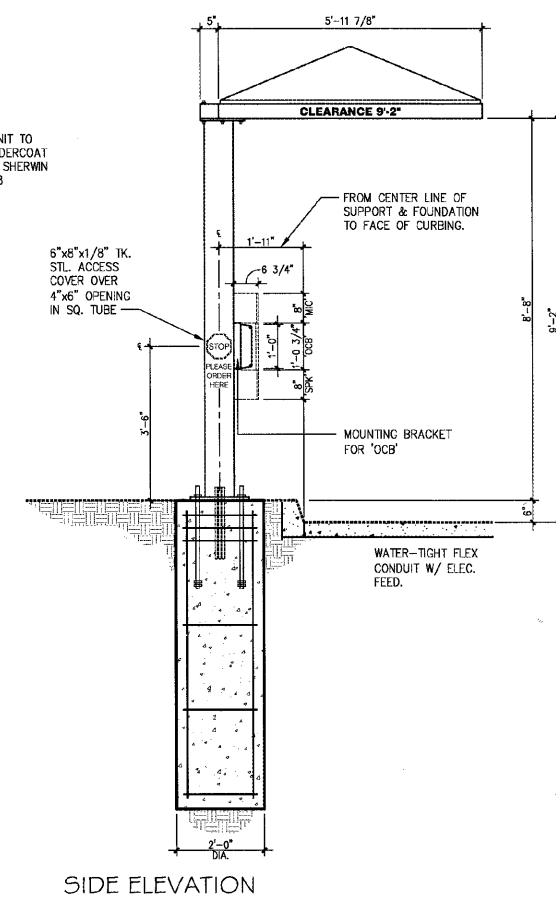
SCALE: 3/4"=1'-0" 5

NOT USED

SCALE: 1/2"=1'-0" 1



FRONT ELEVATION



SIDE ELEVATION

SPEAKER POST W/ ORDER CONFIRMATION BOARD AND AWNING DETAILS

SCALE: 1/2"=1'-0" 4

NRD ARCHITECTS & ENGINEERS
 3005 CARRINGTON MILLS BLVD. SUITE 105
 NORTH CHARLOTTE, NC 28217
 PH: 919 544 7251 FAX: 919 544 9399
 A Division of LMHT Associates

STATE OF SOUTH CAROLINA
 ARCHITECTS & ENGINEERS
 LICENSE NO. 35006
 REGISTERED ARCHITECT

Starlander
 HARDEE'S T24KE PROTOTYPE
 145 CHURCH STREET
 BATESBURGH-LEWISVILLE, SOUTH CAROLINA 29804

NO.	REVISIONS	DESCRIPTION	DATE

DATE: 2-28-17

SHEET NUMBER: SD2