

**NRD**  
 national restaurant designers  
 ARCHITECTS & ENGINEERS  
 3005 CARRINGTON MILL BLVD. SUITE 105  
 MORRISVILLE, NORTH CAROLINA 27560  
 ph: 919 544 7251 fax: 919 544 9399  
 A Division of LMHT Associates

REGISTERED ARCHITECT  
 REGISTERED ENGINEER  
 GLEN LEHRMAN, INC.  
 MORRISVILLE, NC  
 No. 2205

**Hardee's**  
 HARDEE'S TRADE PROTOTYPE  
 45 CHURCH STREET  
 BATESBURG-LEESVILLE, SOUTH CAROLINA 29844

NO.	DATE	DESCRIPTION

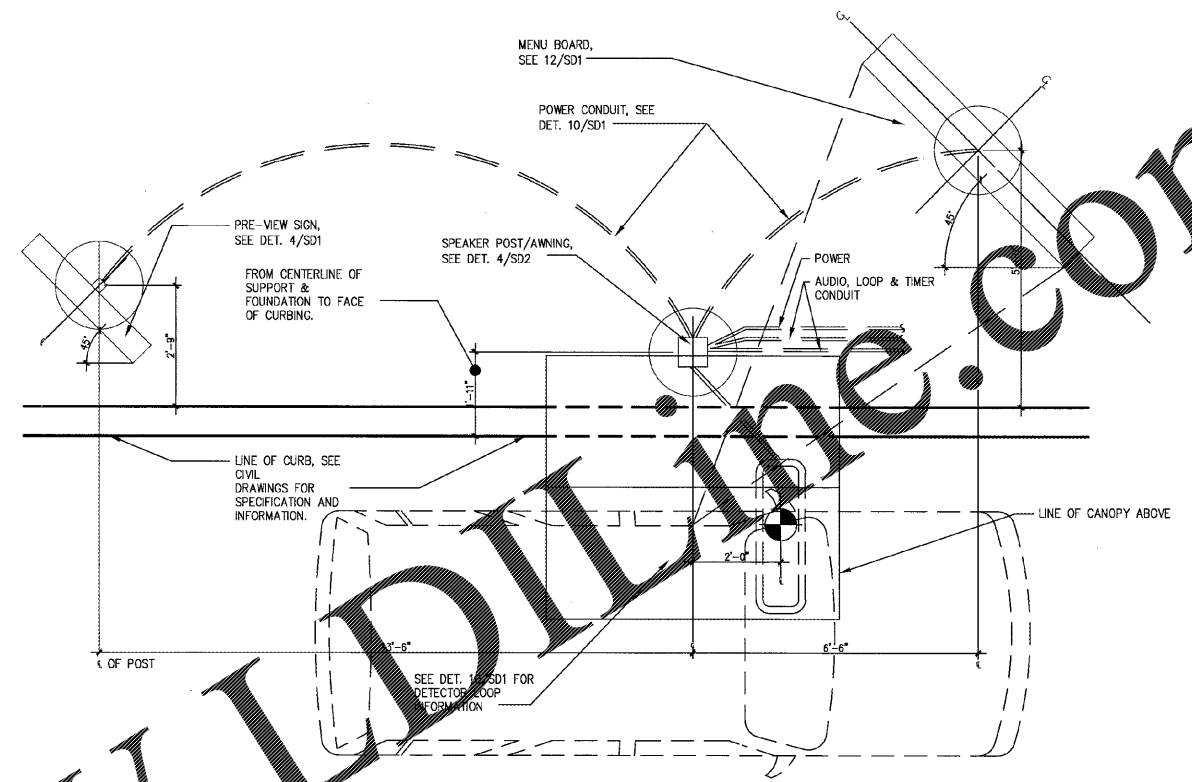
**DRIVE-THRU DETAILS**

DRAWN BY: [ ] CHECKED BY: [ ]  
 DATE: [ ] DATE: [ ]

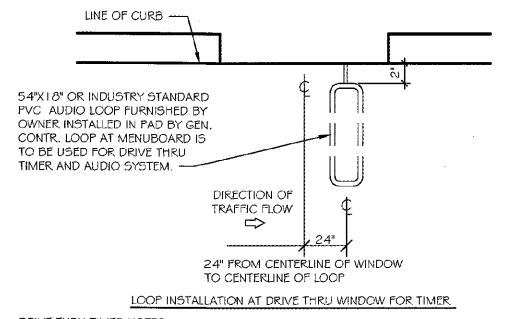
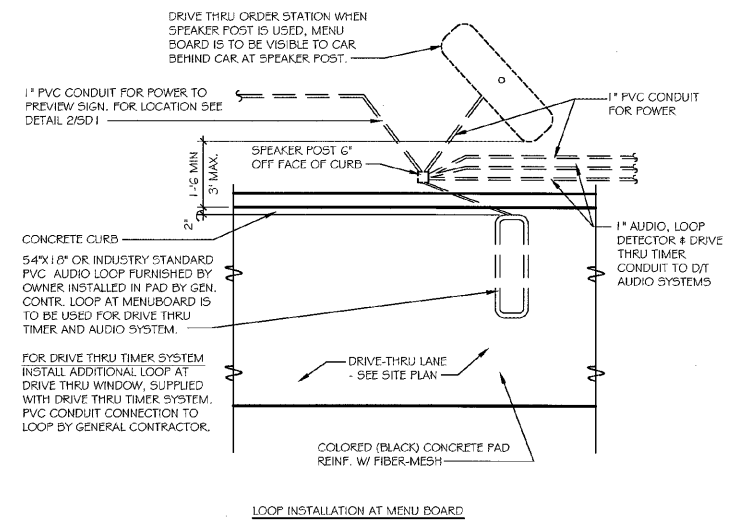
C/SK SITE ID: [ ]

DATE: 2-28-17

SHEET NUMBER:  
**SD1**

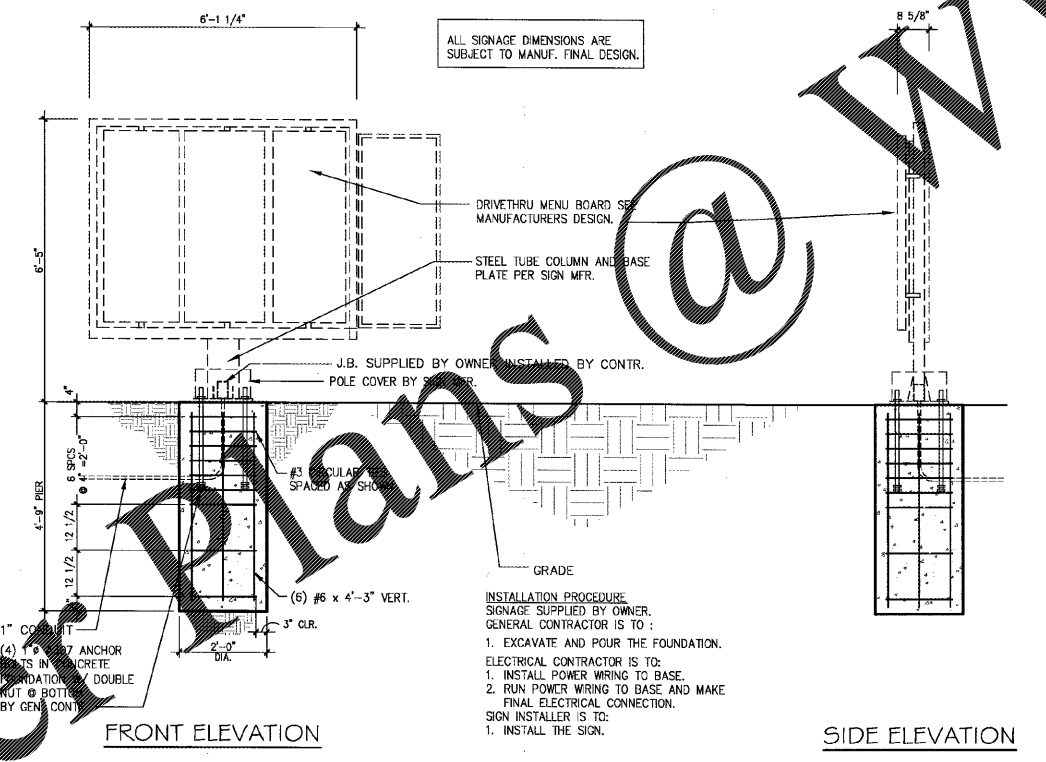


SCALE: 1/2"=1'-0" 2

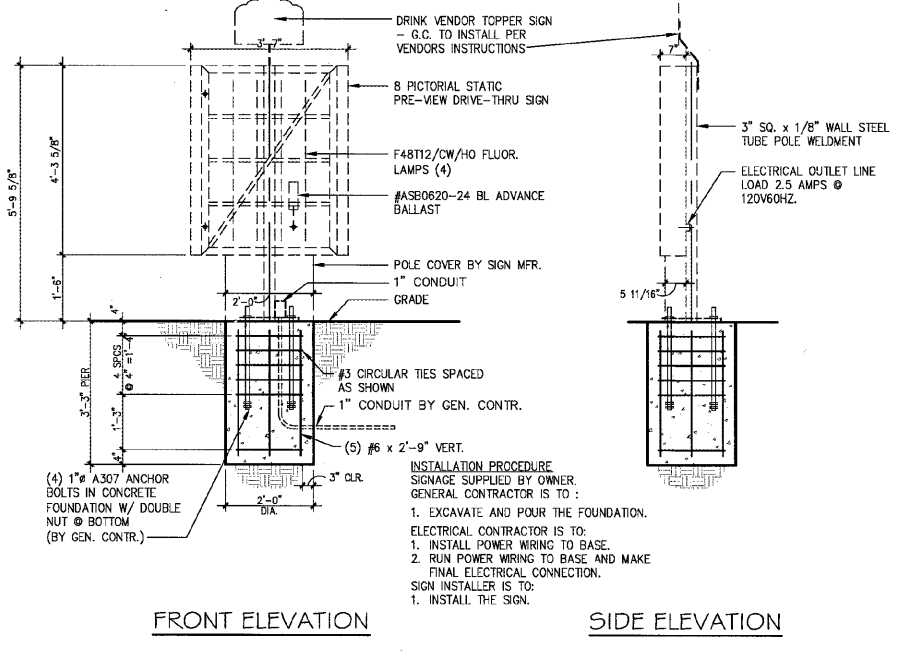


- DRIVE THRU TIMER NOTES**
1. D.T. PAD TO HAVE FIBER-MESH REINFORCING ONLY.
  2. NO METAL TO RUN WITHIN 24" OF GROUND LOOP, ESPECIALLY SEWER, DRAIN AND WATER PIPES.
  3. GROUND LOOP MUST NOT BE BURIED MORE THAN 2" DEEP IN THE CONCRETE.
  4. LONG SIDES OF THE LOOP TO BE AT RIGHT ANGLES TO THE CURB OF THE DRIVE.
  5. LOOPS AT DRIVE THRU WINDOW TO HAVE DRIVE THRU TIMER CONDUIT ONLY.

SCALE: 1/4"=1'-0" 10



SCALE: 1/2"=1'-0" 4



SCALE: 1/2"=1'-0" 4

Order Plans @ WWW.LDLINE.COM

SCALE: 1/2"=1'-0" 4

SCALE: 1/2"=1'-0" 4