

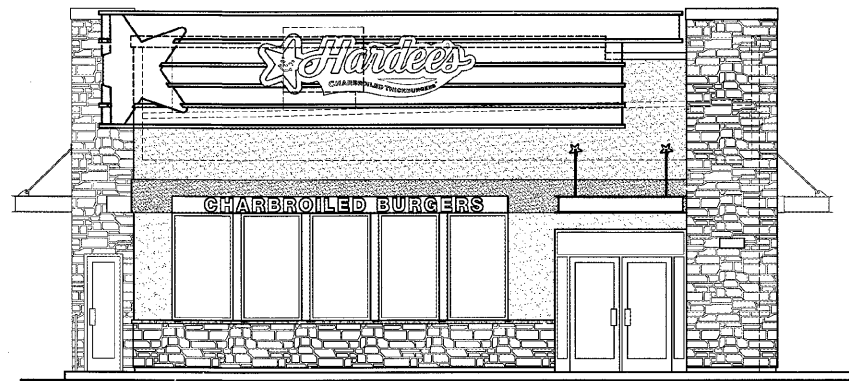
REVISIONS table with columns for NO, DATE, DESCRIPTION, COORDINATION, and STRUC. COORDINATION

TITLE SHEET information including CKE SITE ID., DATE (2-28-17), and SHEET NUMBER (T1)

LIST OF DRAWINGS

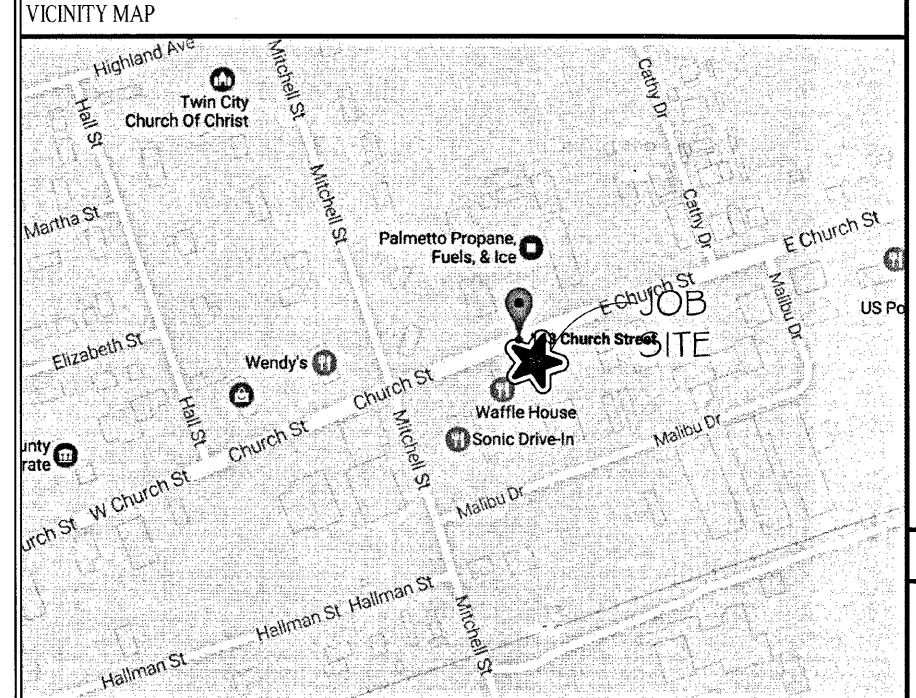
Table listing architectural, structural, electrical, mechanical, and plumbing drawings with drawing numbers and descriptions.

OWNER: Hardee's Carolina Convenience Corporation - Madhu Shrivastava
ARCHITECT: National Restaurant Designers
STRUCTURAL ENGINEER: Britt Peters and Associates Inc.
ELECTRICAL ENGINEER: National Restaurant Designers
MECHANICAL/PLUMBING ENGINEER: National Restaurant Designers
CIVIL ENGINEER: HERITAGE ENGINEERING INC.



HARDEE'S T24KE
148 Church Street
Batesburg-Lesville, South Carolina 29054

ABBREVIATIONS and DRAFTING SYMBOLS table with various symbols and their corresponding meanings.



BUILDING CODE SUMMARY

Table listing applicable building codes: 2015 SOUTH CAROLINA BUILDING CODE, 2015 SOUTH CAROLINA MECHANICAL CODE, 2015 SOUTH CAROLINA FIRE CODE, 2015 SOUTH CAROLINA PLUMBING CODE, 2015 SOUTH CAROLINA GAS CODE, and 2009 ICC/ANSI A117.1.

BUILDING DATA and FIRE RESISTANCE RATINGS

Tables for BUILDING DATA (Occupancy, Load, etc.) and FIRE RESISTANCE RATINGS (Assembly, Exterior, Interior, etc.).

LIFE SAFETY SYSTEM

Table detailing life safety systems: EMERGENCY LIGHTING, EXIT SIGNS, FIRE ALARM SYSTEM, SMOKE DETECTION SYSTEM, and PANIC HARDWARE.

STRUCTURAL DESIGN LOADS

SEE STRUCTURAL DRAWINGS

SPECIAL INSPECTIONS

NONE REQUIRED

TOILET FACILITIES

Table for TOILET FACILITIES showing counts for 83 people (42 male, 42 female) and table 403.1 - RESTAURANTS.

BASIC INFORMATION

Table for BASIC INFORMATION including BUILDING SQUARE FEET (2968), SEAT COUNT (66), ELECTRICAL SERVICE (800 AMPS), WATER SERVICE (1-1/2" 30.4 GPM), GREASE INTERCEPTOR SIZE (1,000 GAL), and RTU TOTAL TONAGE (27.5 TONS).

RESPONSIBILITY SCHEDULE

Table for RESPONSIBILITY SCHEDULE with columns for ITEM, DESCRIPTION, OFCI, and OFOI.

ENERGY CODE SUMMARY

2012 INTERNATIONAL ENERGY CONSERVATION CODE

MECHANICAL SYSTEMS AND EQUIPMENT table detailing RTU specifications, heating/cooling efficiency, and equipment details.

ELECTRICAL SYSTEM AND EQUIPMENT

Table detailing electrical system specifications, lighting schedules, and equipment requirements.

Additional notes and specifications for the electrical system.