

CODES

A. WORK AND MATERIALS SHALL CONFORM TO THE LATEST RULES OF THE NATIONAL BOARD OF FIRE UNDERWRITERS' CODE, REGULATIONS OF THE STATE FIRE MARSHAL, AND WITH APPLICABLE LOCAL CODES AND WITH ALL PREVAILING RULES AND REGULATIONS PERTAINING TO ADEQUATE PROTECTION AND/OR GUARDING OF ALL MOVING PARTS, OR OTHERWISE HAZARDOUS CONDITIONS. NOTHING IN THESE SPECIFICATIONS SHALL BE CONSTRUED TO PERMIT WORK NOT CONFORMING TO THE MOST STRINGENT OF APPLICABLE CODES.

B. THE NATIONAL ELECTRIC CODE, THE LOCAL ELECTRIC CODE, AND THE ELECTRICAL REQUIREMENTS AS ESTABLISHED BY THE STATE AND LOCAL FIRE MARSHAL, AND RULES AND REGULATIONS OF THE POWER COMPANY SERVING THE PROJECT, ARE HEREBY MADE PART OF THE DRAWINGS OR SPECIFICATIONS TO MAKE THE WORK COMPLY WITH THESE REQUIREMENTS. THE ELECTRICAL CONTRACTOR SHALL SO NOTIFY THE ARCHITECT.

C. CONDUCTOR MATERIAL

1. THE CONDUCTOR MATERIAL SHALL BE AS FOLLOWS, UNLESS OTHERWISE NOTED:
 - A. FEEDERS: SHALL BE TYPE THN OR THWN RATED AT 75 DEGREES CENTRIGRADE.
 2. CONDUCTORS INDICATED ON THE DRAWINGS ARE BASED ON COPPER.
 3. ALL CONDUCTORS WITH THE SIZE OF NO. 8 OR LARGER SHALL BE STRANDED.
2. ALL WORK SHALL BE PERFORMED BY A LICENSED ELECTRICAL CONTRACTOR.

4 ELECTRICAL SPECIFICATIONS
E3 SCALE: NONE

EXISTING PANEL 'D'

1	1P-20A	1P-20A	2
2	1P-20A	1P-20A	3
3	1P-20A	1P-20A	4
4	1P-20A	1P-20A	5
5	1P-20A	2P-20A	6
6	1P-20A	2P-20A	7
7	1P-20A	2P-20A	8
8	SPACE	2P-15A	9
9	SPACE	2P-15A	10
10	SPACE	2P-15A	11
11	SPACE	2P-15A	12
12	SPACE	2P-15A	13
13	SPACE	2P-15A	14
14	SPACE	2P-15A	15
15	SPACE	2P-15A	16
16	SPACE	2P-15A	17
17	SPACE	2P-15A	18

208/120 3PH 4W
100 AMP MLD
10,000 AC

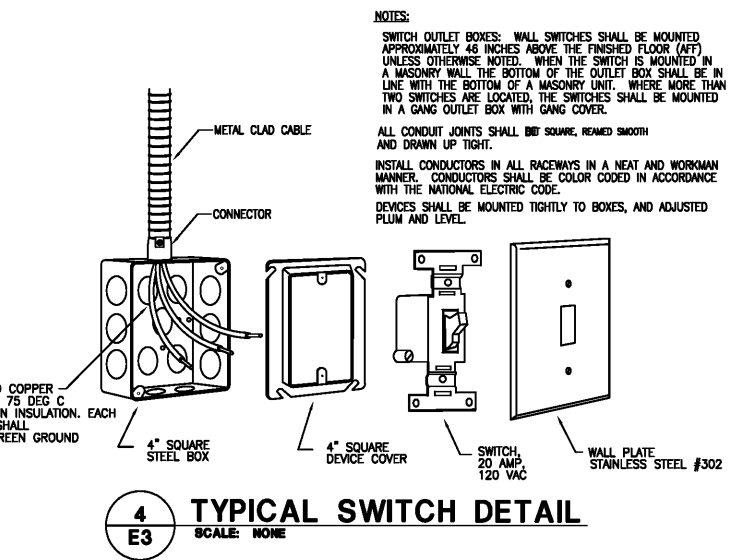
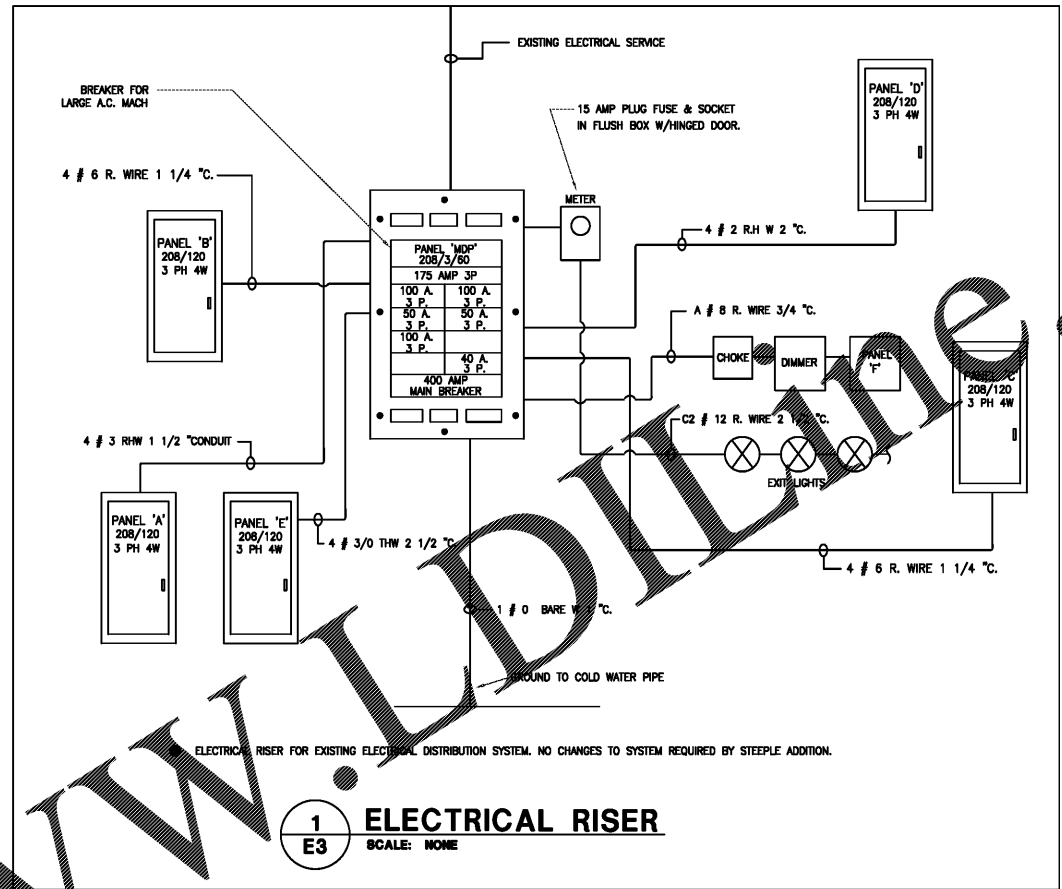
* PROVIDE NEW 2-P 15A BREAKER FOR PANEL MATCH PANEL AC RATING.
WIRE SIZE FOR 2-POLE 15 AMP CIRCUIT
WIRE - 1(2 #12, 1 #12 GND., 3/4" C)

EXISTING PANEL 'C'

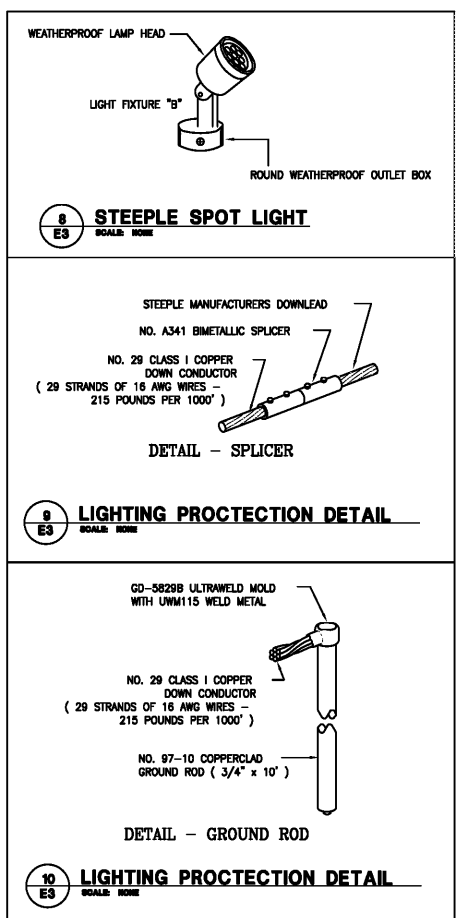
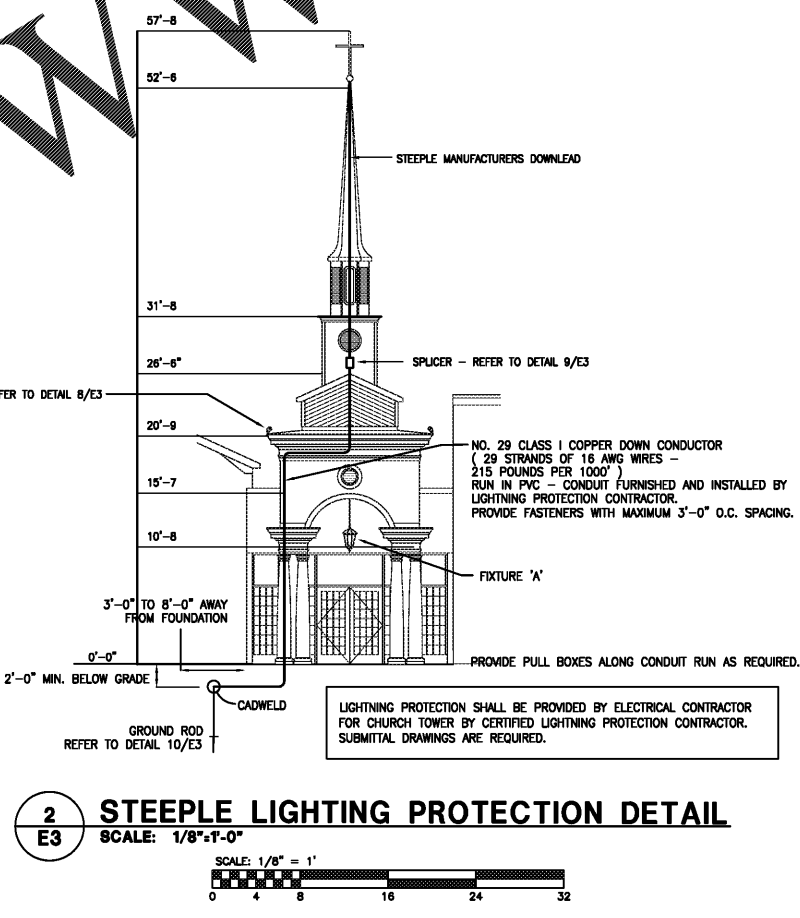
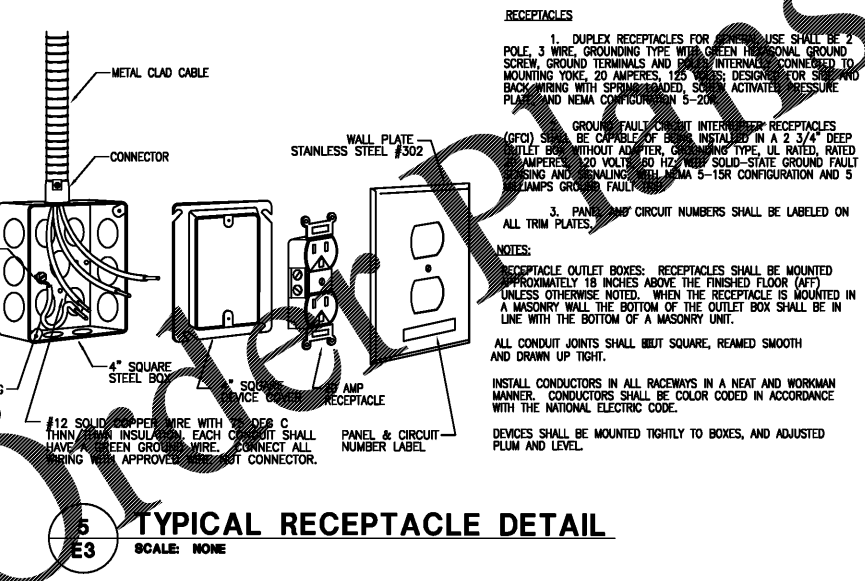
1	1P-20A	1P-20A	2
2	1P-20A	1P-20A	3
3	1P-20A	1P-20A	4
4	1P-20A	1P-20A	5
5	1P-20A	1P-20A	6
6	1P-20A	1P-20A	7
7	1P-20A	1P-20A	8
8	1P-20A	1P-15A	9
9	1P-20A	1P-15A	10
10	1P-20A	1P-15A	11
11	1P-20A	1P-15A	12
12	SPACE	SPACE	13
13	SPACE	SPACE	14
14	SPACE	SPACE	15
15	SPACE	SPACE	16
16	SPACE	SPACE	17
17	SPACE	SPACE	18

208/120 3PH 4W
100 AMP MLD
10,000 AC

* PROVIDE NEW 1-P 15A BREAKER FOR PANEL MATCH PANEL AC RATING.
WIRE SIZE FOR EACH 1-POLE 15 AMP CIRCUIT
WIRE - 1(1 #12, 1 #12 GND., 3/4" C)



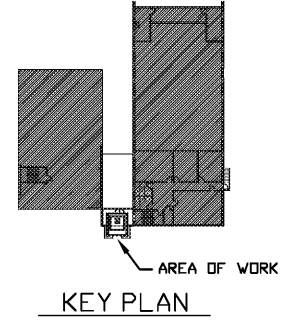
3 PANEL SCHEDULE
E3 SCALE: NONE



RAMSAY BURGIN SMITH ARCHITECTS

225 NORTH MAIN STREET, SUITE 901
SHELBY, NORTH CAROLINA 28144
Phone: (704) 335-3333 Fax: (704) 693-3361
Email: rbs@ramsayburginsmith.com www.rbsarch.com

NO REVISIONS OR REVISE OF THESE DRAWINGS OR ANY DETAILS THEREFROM MUST BE WITH THE WRITTEN CONSENT OF THE ARCHITECT



ELECTRICAL RISER
PANEL SCHEDULES
LIGHTNING PROTECTION

2198 East Holly Grove Road
P.O. Box 1256
Lexington, N.C. 27283
Design Engineering, Inc. 336/224-0100
336/224-0099 (fax)

CLEMMONS FIRST BAPTIST CHURCH NARTHEX ADDITION

PROFESSIONAL ENGINEER
DAVID S. SMITH
NORTH CAROLINA
LICENSED PROFESSIONAL ENGINEER
C-657

AS/MSB
DATE: 08/2017
DATE
SHEET NO. **E3**
OF 3