

LOAD SUMMARY				
LOAD	VOLT-AMPS	DEMAND FACTOR	VOLT-AMPS	METER# 775 163 20
PEAK OF THE YEAR 8-2017	23000	1.25	28750	1ST 10KV @ 100% REMAINDER @ 50%
LIGHTS	540	1.25	675	
RECEPTACLES	180		180	
HVAC	2064		2064	
TOTAL			31669	/1.73 X 208 = 88 AMPS
FUTURE CAPACITY SERVICE - 208/120 VOLTS 3 PHASE 4W				312 AMPS 400 AMPS

**6 LOAD SUMMARY**  
E1 SCALE: NONE

**CODES**

A. WORK AND MATERIALS SHALL CONFORM TO THE LATEST RULES OF THE NATIONAL BOARD OF FIRE UNDERWRITERS' CODE, REGULATIONS OF THE STATE FIRE MARSHAL, AND WITH APPLICABLE LOCAL CODES AND WITH ALL PREVAILING RULES AND REGULATIONS PERTAINING TO ADEQUATE PROTECTION AND/OR GUARDING OF ALL MOVING PARTS, OR OTHERWISE HAZARDOUS CONDITIONS. NOTHING IN THESE SPECIFICATIONS SHALL BE CONSTRUED TO PERMIT WORK NOT CONFORMING TO THE MOST STRINGENT OF APPLICABLE CODES.

B. THE NATIONAL ELECTRIC CODE, THE LOCAL ELECTRIC CODE, AND THE ELECTRICAL REQUIREMENTS AS ESTABLISHED BY THE STATE AND LOCAL FIRE MARSHAL, AND RULES AND REGULATIONS OF THE POWER COMPANY SERVING THE PROJECT, ARE HEREBY MADE PART OF THE DRAWINGS OR SPECIFICATIONS TO MAKE THE WORK COMPLY WITH THESE REQUIREMENTS. THE ELECTRICAL CONTRACTOR SHALL SO NOTIFY THE ARCHITECT.

C. CONDUCTOR MATERIAL

1. THE CONDUCTOR MATERIAL SHALL BE AS FOLLOWS, UNLESS OTHERWISE NOTED:

A. FEEDERS SHALL BE TYPE THHN OR THWN RATED AT 75 DEGREES CENTIGRADE.

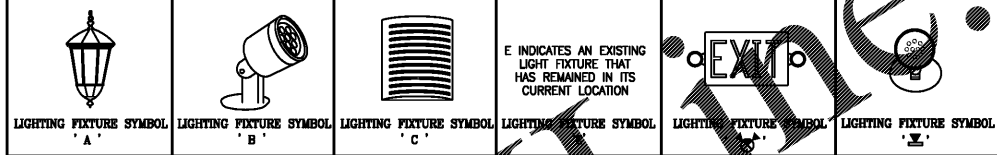
2. CONDUCTORS INDICATED ON THE DRAWINGS ARE BASED ON COPPER.

3. ALL CONDUCTORS WITH THE SIZE OF NO. 8 OR LARGER SHALL BE STRANDED.

D. ALL WORK SHALL BE PERFORMED BY A LICENSED ELECTRICAL CONTRACTOR.

**4 ELECTRICAL SPECIFICATIONS**  
E1 SCALE: NONE

LIGHTING FIXTURE SCHEDULE									
SYM	MNFR	CATALOG #	NO.	LAMP TYPE	BALLAST TYPE	VOLT-AMPS	VOLTAGE	MTD HEIGHT	
A	HINKLEY	2452CB	1	LED	-	-	120 V		3 LIGHT AUGUSTA OUTDOOR PENDANT, (3) BULBS ARE 40W 891/2 CAND C INCAND BULBS, 120 VOL. SOLID BRASS WITH COOPER BRASS FINISH AND GLASS, OUTDOOR LIGHT.
B	INSIGHT	SSP-15-40K 30-CDS-INT-1	4	LED 15W 40K 75K LUMEN	-	15 WATT	120 V	ROOF MOUNTING	120 VOLT, 15W, 40K STANDARD FIXTURE WITH A HEAVY DUTY DIE-CAST ALUMINUM FINISH AND COLOR CHOICE BY ARCH.
C	DALSIGHTING	WFD400-12 ZLEDHB35K	4	LED 14W 35K 22K LUMEN	-	14 WATT	120 V	WALL MOUNT	14 W, 35K, 2200 LUMEN LED WALL SCOCNE, COLOR BY ARCH.
E	EXISTING LIGHT FIXTURES								
	SURE-LITES DUAL-LITE LITHONIA LIGHTING	APWR1 EQUAL	1	LED LAMP HEADS	-	1 VA	120/277 DUAL VOLTAGE	MTD TO EXTERIOR WALL MOUNT BELOW FIXTURE	LED SINGLE REMOTE HEAD, UL LISTED WET LOCATION NOTE: REMOTE HEAD WILL BE OFF DURING NORMAL OPERATION, WILL BE ACTIVATED BY POWER FAILURE
	SURE-LITES DUAL-LITE LITHONIA LIGHTING	APCH7 EQUAL	2	LED LAMP HEADS	-	2 VA	120/277 DUAL VOLTAGE	MOUNT TO WALL ABOVE DOOR FRAME	LED EXIT SIGN/BATTERY LIGHT COMBINATION, WHITE THERMOPLASTIC HOUSING, RED LETTERS, EMERGENCY LED HEADS MAINTENANCE FREE SEALED NICKEL CADMIUM BATTERY (90 MIN.), WITH REMOTE CAPABILITY, UL LISTED LOCATIONS



**ELECTRICAL SYSTEM AND EQUIPMENT METHOD OF COMPLIANCE**

Energy Code:  PRESCRIPTIVE  PERFORMANCE  
ASHRAE 90.1:  PRESCRIPTIVE  PERFORMANCE

**LIGHTING SCHEDULE**

lamp type required in fixture See Lighting Schedule On Dwg. E-1  
number of lamps in fixture \_\_\_\_\_  
ballast type used in the fixture \_\_\_\_\_  
number of ballast in fixture \_\_\_\_\_  
total wattage per fixture \_\_\_\_\_  
total interior wattage specified vs allowed 56 W VS 186 W (whole building or space by space)  
total exterior wattage specified vs allowed NA

**ADDITIONAL PRESCRIPTIVE COMPLIANCE**

506.2.1 More Efficient Mechanical Equipment  
 506.2.2 Reduced Lighting Power Density  
 506.2.3 Energy Recovery Ventilation Systems  
 506.2.4 Higher Efficiency Service Water Heating  
 506.2.5 On-Site Supply of Renewable Energy  
 506.2.6 Automatic Daylighting Control Systems

**DESIGNER STATEMENT:**  
To the best of my knowledge and belief, the design of this building complies with the thermal envelope requirements of the North Carolina State Building Code, 2012 Energy Conservation Code.

NAME: DAVID S. SMITH  
TITLE: ELECTRICAL ENGINEER

**7 ENERGY CODE**  
E1 SCALE: NONE

ELECTRICAL DISCONNECT SCHEDULE				
EQUIPMENT NUMBER	V/P/HZ	MCA	MFA	DISCONNECT
OUTDOOR UNIT	208/1/60	8.6	15	HUBBELL (OR EQUAL) CATALOG # HBL7832FMD HEAVY DUTY AC MANUAL MOTOR CONTROLLER (SUITABLE AS MOTOR DISCONNECT) 3QA, DOUBLE POLE, SINGLE THROW, BY E.C.
INDOOR UNIT	INDOOR UNIT IS POWERED FROM THE OUTDOOR UNIT			

**5 DISCONNECT SCHEDULE**  
E1 SCALE: NONE

ELECTRICAL LEGEND & EQUIPMENT SCHEDULE			
SYM	MNFR	CATALOG #	DESCRIPTION
\$	LEVITON	1221	20 AMP, 125V, SINGLE POLE, COLOR BY ARCH., MOUNT 48" ABOVE FLOOR TO TOP OF PLATE
\$3	LEVITON	1223	20 AMP, 125V, THREE WAY, COLOR BY ARCH., MOUNT 48" ABOVE FLOOR TO TOP OF PLATE
\$4	LEVITON	1224	20 AMP, 125V, FOUR WAY, COLOR BY ARCH., MOUNT 48" ABOVE FLOOR TO TOP OF PLATE
REX	LEVITON	5262	EXISTING RECEPTACLE
R	LEVITON	5262	RECEPTACLE, 15 AMP, 125V, 3 WIRE, COLOR BY ARCH.
R			DUPLEX RECEPTACLE, 20 AMP, 125V, 3 WIRE, COLOR BY ARCH., COVER PLATE, COLOR SELECTED BY ARCHITECT, MOUNTED 42" AFF OR 6 INCHES ABOVE BACK
WP	LEVITON	WP-26	WEATHER PROOF RECEPTACLE COVER
GF	LEVITON		GROUND FAULT RECEPTACLE, 20 AMP, 125V, GRAY NYLON FACE, STAINLESS STEEL COVER PLATE, MOUNT 16" AFF OR AS NOTED
A	SEE FIXTURE SCHEDULE		
O	SEE FIXTURE SCHEDULE		
D	SEE FIXTURE SCHEDULE		
C	SEE FIXTURE SCHEDULE		
E	SEE FIXTURE SCHEDULE		
F	SEE FIXTURE SCHEDULE		
			PHOTO CELL
			RACEWAY CONCEALED ABOVE CEILING OR IN WALL
			CONNECTION TO PANEL BOARD
			PANEL BOARD
			DISCONNECT SWITCH
			HEAVY DUTY FUSED SAFETY SWITCH, SIZE FUSES AS REQUIRED, USE NEMA 1 ENCLOSURES FOR INDOOR APPLICATIONS AND NEMA 3R FOR OUTDOOR APPLICATIONS

**8 ELECTRICAL LEGEND & EQUIPMENT SCHEDULE**  
E1 SCALE: NONE

**GENERAL DEMOLITION NOTES**

- ALL SALVAGEABLE EQUIPMENT AND MATERIALS SUBJECT TO DEMOLITION SHALL BE TURNED OVER TO THE OWNER.
- ALL UNWANTED DEMOLISHED EQUIPMENT AND MATERIALS ARE TO BE PROPERLY DISPOSED OF BY ELECTRICAL CONTRACTOR.
- DISCONNECTION OF ALL ELECTRIC MOTORS SHALL BE BY THE ELECTRICAL CONTRACTOR.
- ELECTRICAL CONTRACTOR SHALL TAKE STEPS TO PROTECT EXISTING FINISHES FROM DAMAGE AND SHALL BE RESPONSIBLE FOR DAMAGE REPAIR.
- ELECTRICAL CONTRACTOR SHALL VERIFY ALL CIRCUITS PRIOR TO BEGINNING DEMOLITION.
- DURING CONSTRUCTION PHASE E.C. IS RESPONSIBLE FOR MAINTAINING UNINTERRUPTED POWER, SECURITY AND COMMUNICATIONS CONNECTIONS TO ELECTRICAL DEVICES IN AREAS NOT UNDER CONSTRUCTION. E.C. SHALL REROUTE WIRING AND CABLING AS REQUIRED.
- ELECTRICAL CONTRACTOR SHALL DEMOLISH ALL ABANDONED WIRING AND ALL ACCESSIBLE ABANDONED CONDUIT. ABANDONED HOMERUNS SHALL BE DEMOLISHED TO PANEL AND BREAKERS SPARED.
- E.C. SHALL PROVIDE BLANK COVER PLATES FOR ABANDONED RECESSED JUNCTION BOXES ON EXISTING WALLS. E.C. SHALL DEMOLISH ALL SURFACE MOUNTED ABANDONED JUNCTION BOXES.
- IT IS THE INTENT OF THIS DRAWING TO ILLUSTRATE EQUIPMENT AND MATERIALS TO BE REMOVED UNDER THIS CONTRACT. SHOULD ANY ITEM BE INADVERTENTLY OMITTED IT IS THE RESPONSIBILITY OF THE ELECTRICAL CONTRACTOR TO REMOVE THIS ITEM(S) AT NO ADDITIONAL COST TO THE OWNER.

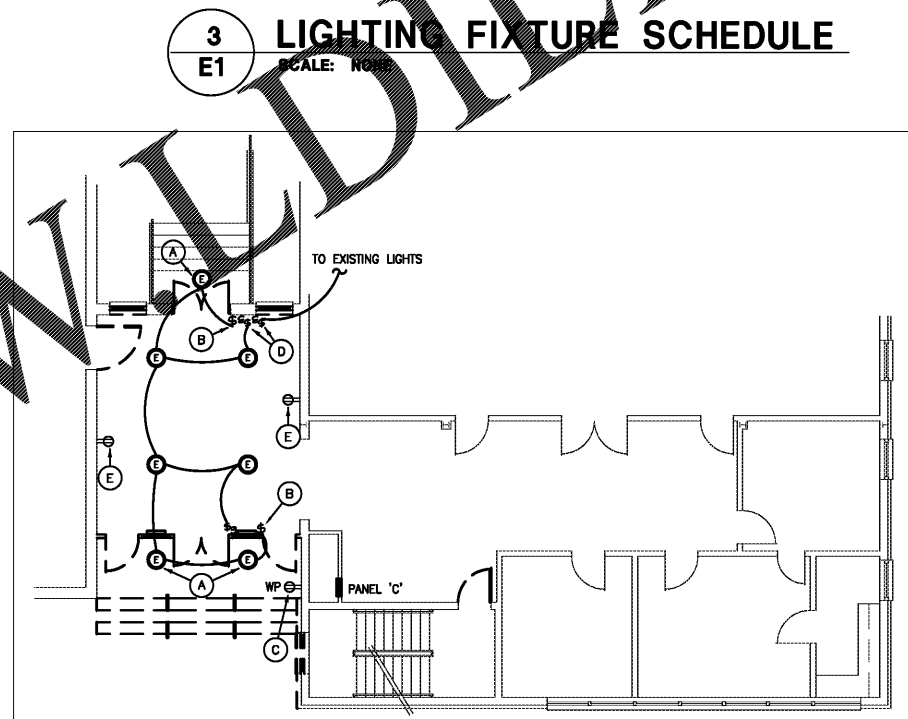
**DEMOLITION NOTES**

SYMBOL	NOTES
---	WALLS AND OTHER STRUCTURAL ELEMENTS THAT ARE TO BE DEMOLISHED ARE SHOWN WITH HEAVY DASHED LINE. E.C. IS RESPONSIBLE FOR REMOVING ALL RECEPTACLES, SWITCHES, AND OTHER ELECTRICAL DEVICES FROM WALLS THAT ARE TO BE DEMOLISHED. E.C. SHALL REROUTE EXISTING WIRING IN DEMOLISHED WALLS AS REQUIRED TO MAINTAIN POWER, SECURITY AND COMMUNICATIONS CONNECTIONS TO ALL UNDEMOLISHED ELECTRICAL DEVICES.

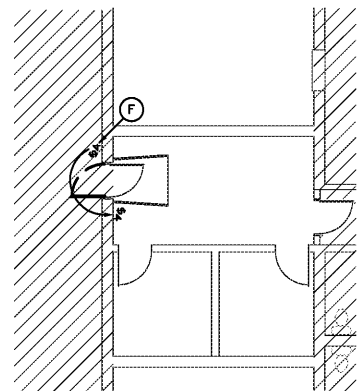
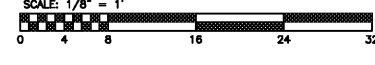
X  
↑  
REFERENCE THE FOLLOWING DEMOLITION NOTES ON PLAN:

- EXISTING LIGHT FIXTURE TO BE DEMOLISHED.
- EXISTING SWITCH TO BE DEMOLISHED.
- EXISTING RECEPTACLE TO BE DEMOLISHED.
- EXISTING SWITCH WILL REMAIN.
- EXISTING RECEPTACLE WILL REMAIN.
- RELOCATE SWITCH FOR CHANGE IN DOOR SWING. RECONNECT SWITCH TO LIGHT. MAINTAIN EXISTING SWITCHING PATTERN.

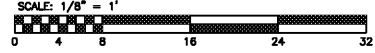
GENERAL NOTE: REMOVE FLOOD LIGHT ON EXISTING STEEPLE.



**1 1ST FLOOR DEMO PLAN**  
E1 SCALE: 1/8"=1'-0"



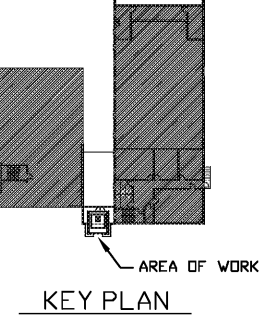
**2 BASEMENT DEMO PLAN**  
E1 SCALE: 1/8"=1'-0"



**RAMSAY BURGIN SMITH ARCHITECTS**

225 NORTH MAIN STREET, SUITE 501  
Raleigh, NC 27601  
Phone: (919) 783-7373 Fax: (919) 639-5361  
Email: rbs@ramsaysmith.com (RAMSBARCH.COM)

ALL INFORMATION AND RELIANCE OF THESE DRAWINGS OR ANY DETAILS THEREFROM MUST BE WITH THE WRITTEN CONSENT OF THE ARCHITECT



**DEMO PLAN**  
LIGHTING SCHEDULE  
ELECTRICAL LEGEND

2198 East Holly Grove Road  
P.O. Box 1258  
Lexington, N.C. 27293  
Design Engineering, Inc. 336/224-0100  
336/224-0099 (fax)

**CLEMMONS FIRST BAPTIST CHURCH NARTHEX ADDITION**

**DESIGN ENGINEERING, INC.**  
C-657  
DAVID S. SMITH  
REGISTERED ELECTRICAL ENGINEER  
STATE OF NORTH CAROLINA

AS/MS/CS  
DRAWN BY  
DSS  
CHECKED BY  
AUGUST-2017  
DATE

SHEET NO. E1  
OF 3