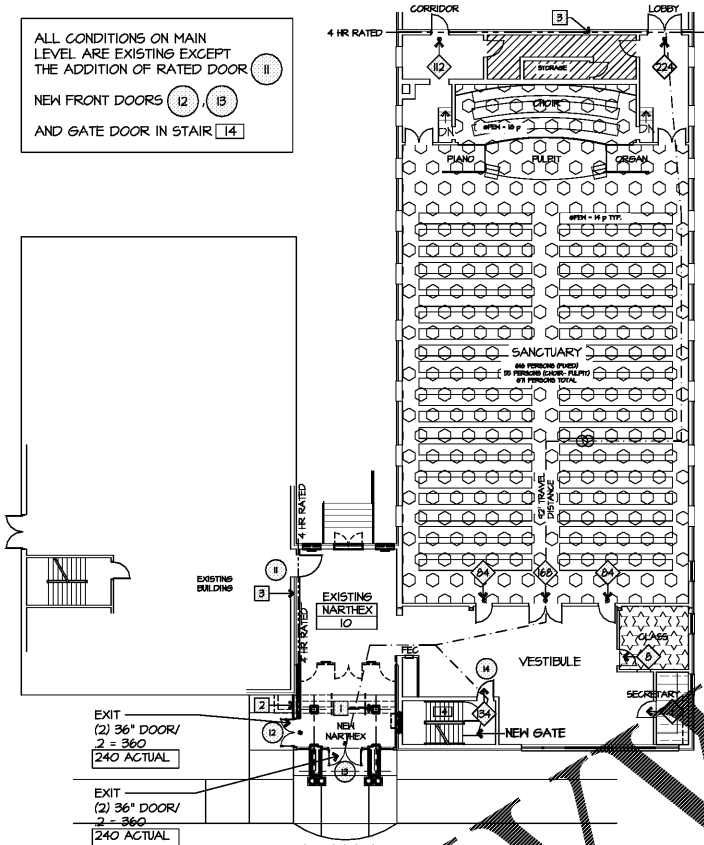
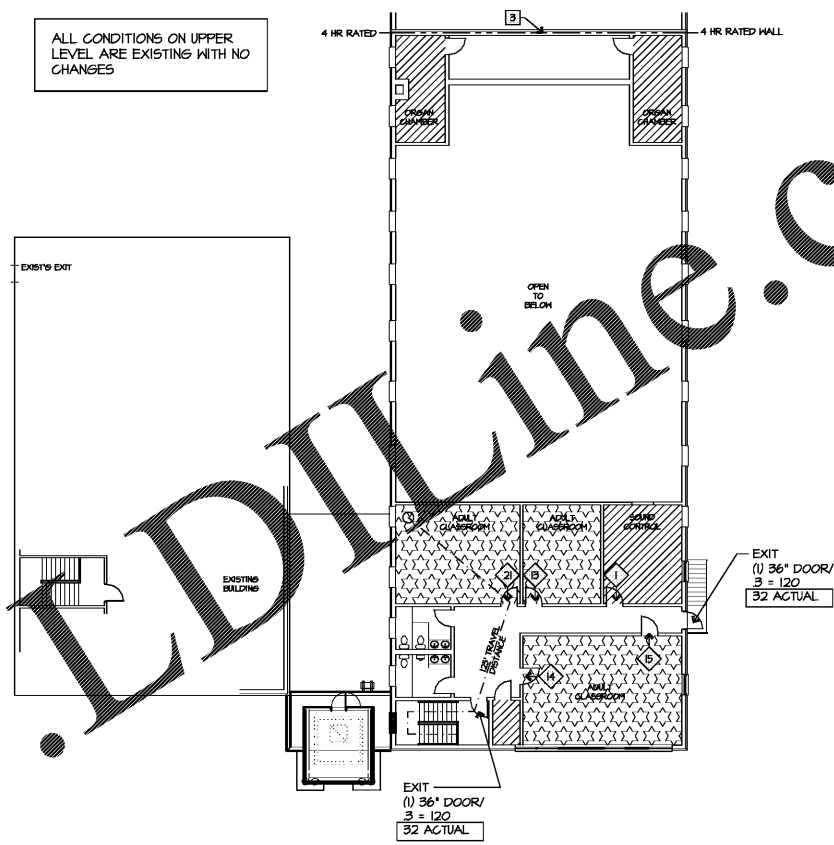


1 BASEMENT PLAN
 SCALE: 1/16" = 1'-0"



2 FIRST FLOOR PLAN
 SCALE: 1/16" = 1'-0"



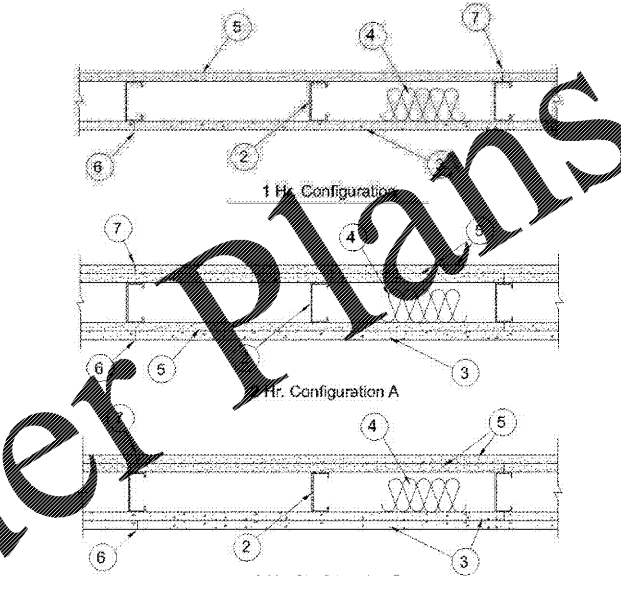
3 SECOND FLOOR PLAN
 SCALE: 1/16" = 1'-0"

LEGEND/ SYMBOLS

SYMBOL	DESCRIPTION
[Symbol]	1 HR RATED WALL
[Symbol]	EXIT SIGN LOCATION (ARROW INDICATES DIRECTION)
[Symbol]	EXIT SIGN & BATTERY LIGHT
[Symbol]	FIRE EXTINGUISHING CABINET
[Symbol]	NUMBER OF PEOPLE AND DIRECTION EXITING
[Symbol]	200' MAX. TRAVEL DISTANCE
[Symbol]	DOOR TAG DESIGNATIONS; SEE DOOR SCHEDULE
[Symbol]	WALL TYPES TAG DESIGNATIONS; SEE WALL TYPES 4/C1.2
[Symbol]	EXIT
[Symbol]	ALL NEW DOORS MARKED EXIT SHALL HAVE PANIC HARDWARE
[Symbol]	NAME ROOM NAME
[Symbol]	TITLE ROOM TITLE
[Symbol]	100 ROOM NUMBER
[Symbol]	FIXED SEATS - SANCTUARY ACTUAL COUNT
[Symbol]	ASSEMBLY AREAS UNCONCENTRATED 15 NET
[Symbol]	ACCESSORY STORAGE AREAS 300 GROSS
[Symbol]	BUSINESS AREAS 100 GROSS
[Symbol]	EDUCATIONAL CLASSROOM AREAS 20 NET
[Symbol]	LIBRARY READING ROOMS 50 NET

Design No. U404
 July 31, 2017

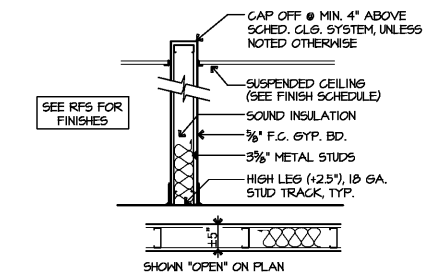
Nonbearing Wall Rating - 1 and 2 Hr (See Items 3 and 5)
 * Indicates such products shall bear the UL or cUL Certification Mark for jurisdictions employing the UL or cUL Certification (such as Canada), respectively.



- Steel Floor and Ceiling Runners** - (Not Shown) - Channel shaped, fabricated from min 20 MBSI (60329) in. min bare metal thickness galvanized steel. Attached to floor and ceiling with steel fasteners spaced 24 in. OC max.
- Steel Studs** - Channel shaped, fabricated from min 20 MBSI corrosion-protected for gully steel. 2-1/2 in. min width, min 1-1/2 in. flanges and 1/4 in. return, spaced a max of 16 in. OC. Studs resist-rt into floor and ceiling members. Studs to cut 5/8 to 3/4 in. less than assembly height.
- Concrete/Block Backer Units** - 1-1/2 in. or 5/8 in. thick, applied vertically or horizontally with vertical joints centered over studs, fastened to studs and runners with expansion fasteners, oblonged, ribbed water head screws with a minimum head diameter of 1/8 in. For nonbearing systems, fastened to studs and bottom runners with the uppermost screws placed 1/2 in. to 2 in. below the bottom edge of the top runner, horizontal joints need not be braced by framing.
- 4 Hr System** - Screws shall be min 1-1/4 in. long and spaced a max of 8 in. OC. All vertical joints staggered one stud cavity from gypsum board vertical joints on the opposite side of studs. Horizontal edge joints and horizontal butt joints need not be staggered.
- 2 Hr System** - For the base layer in Configuration B, the screws shall be min 1-1/4 in. long and spaced a max of 12 in. OC. For the base layer, screws shall be 1-5/8 in. long and spaced a max of 8 in. OC. All face layer joints offset min 1/2 in. from underlying base layer joints. Joints in either layer need not be staggered from joints on the opposite side of the wall.
- UNITED STATES GYPSUM CO** - Type DKB
- Batts and Blankets** - Min 2 in. thick mineral wool insulation batts, friction-fitted between studs.
- JOHNS MANVILLE** - Type S818
- ROXUL INC** - Type AFB
- THERMAFIBER INC** - Type SAFB, SAFB FF
- Gypsum Board** - 5/8 in. thick, with square or tapered edges, applied vertically or horizontally with vertical joints centered over studs. Horizontal joints need not be braced by framing. For vertical application, fastened to studs and runners with 1 in. long screws spaced max 8 in. OC at vertical edges and spaced max 12 in. OC in the field. For horizontal application, fastened to studs and runners with 1 in. long screws spaced max 8 in. OC. Vertical joints staggered one stud cavity from gypsum board vertical joints on the opposite side of studs. Horizontal edge joints and horizontal butt joints need not be staggered.
- 2 Hr System** - Base layer with an overlying gypsum board face layer, fastened with 1 in. long screws spaced max 12 in. OC to studs and runners. Face layer joints offset min 1/2 in. from underlying base layer joints. Joints in either layer need not be staggered from joints on the opposite side of the wall. When used in walls other than 48 in. gypsum panels to be installed horizontally.
- CGC INC** - Types AR, C, JP-AR, JP-X1, JP-X2, PFC-AR, SCA, SHK, SHX, 1X3, USGX, WRC or WRX (Joint tape and compound, Items 6 and 7, optional for use with Type USGX).
- UNITED STATES GYPSUM CO** - Type AF, C, FCX-C, JP-AR, JP-X1, JP-X2, PFC-AR, SCA, SHK, ULX, WRC, WRX, USGX (Joint tape and compound, Items 6 and 7, optional for use with Type USGX).
- USE BORAL ZANWAVE DRYWALL L L C SFZ** - Types C, SCX
- USE MEXICO S A DE C V** - Types AR, C, JP-AR, JP-X1, JP-X2, PFC-AR, SCA, SHK, ULX, USGX, WRC, WRX (Joint tape and compound, Items 6 and 7, optional for use with Type USGX).

- Gypsum Board** - (As an alternate to Item 5) May be used as the base layer on one or both sides of wall. For direct attachment only. Nominal 5/8 in. thick lead backed gypsum panels with beveled, square or tapered edges, applied vertically. Vertical joints centered over studs and staggered min 1 stud cavity on opposite sides of studs. Wallboard secured to studs with 1-1/4 in. long Type S-12 steel screws spaced 8 in. OC at perimeter and 12 in. OC in the field when applied as the base layer. When applied as the face layer screw length to be increased to 2-1/2 in. Lead backer strips require lead backed gypsum wallboard and applied at remaining stud locations. Lead backer strips, min 2 in. wide, max 1/4 in. long with a max thickness of 1/4 in. placed on the face of studs and attached to the stud with two 1 in. long Type S-12 pan head steel screws, one at the top of the strip and one at the bottom of the strip. Lead discs, max 3/16 in. diam by max 1/40 in. thick, compression fitted or adhered over the screw heads. Lead backer strips and discs to have a purity of 99.9% meeting the Federal Specification QQ-L-2011, Grade "A", C or D. Fasteners for face layer gypsum panels (Item 5) when installed over lead backer board to be min 2-1/2 in. Type S-12 bugle head steel.
- NEW ENGLAND LEAD BURNING CO INC, DBA NELCO** - Nelco
- Gypsum Board** - (As an alternate to Item 5) For Direct Application to Studs Only - For use on the base layer or as the face layer. Nominal 5/8 in. thick lead backed gypsum panels with beveled, square or tapered edges, applied vertically. Vertical joints centered over studs and staggered min 1 stud cavity on opposite sides of studs. Wallboard secured to studs with 1-1/4 in. long Type S-12 steel screws spaced 8 in. OC at perimeter and 12 in. OC in the field. Lead backer strips, min 2 in. wide, max 1/4 in. long with a max thickness of 1/4 in. placed on the face of studs and attached to the stud with two 1 in. long Type S-12 pan head steel screws, one at the top of the strip and one at the bottom of the strip. Lead discs, max 3/16 in. diam by max 1/40 in. thick, compression fitted or adhered over the screw heads. Lead backer strips and discs to have a purity of 99.9% meeting the Federal Specification QQ-L-2011, Grade "A", C or D. Fasteners for face layer gypsum panels (Item 5) when installed over lead backer board to be min 2-1/2 in. Type S-12 bugle head steel.
- MAYCO INDUSTRIES INC** - Type 3-Ray Shined Gypsum
- Gypsum Board** - (As an alternate to Item 5) For Direct Application to Studs Only - For use on the base layer or as the face layer. Nominal 5/8 in. thick lead backed gypsum panels with beveled, square or tapered edges, applied vertically. Vertical joints centered over studs and staggered min 1 stud cavity on opposite sides of studs. Wallboard secured to studs with 1-1/4 in. long Type S-12 steel screws spaced 8 in. OC at perimeter and 12 in. OC in the field. Lead backer strips, min 2 in. wide, max 1/4 in. long with a max thickness of 1/4 in. placed on the face of studs and attached to the stud with two 1 in. long Type S-12 pan head steel screws, one at the top of the strip and one at the bottom of the strip. Lead discs, max 3/16 in. diam by max 1/40 in. thick, compression fitted or adhered over the screw heads. Lead backer strips and discs to have a purity of 99.9% meeting the Federal Specification QQ-L-2011, Grade "A", C or D. Fasteners for face layer gypsum panels (Item 5) when installed over lead backer board to be min 2-1/2 in. Type S-12 bugle head steel.
- JOINTS** - Covered with glass fiber mesh tape and latex modified Portland cement mortar or bonoset, or Type 1 organic adhesive.
- JOINTS** - When tapered edge gypsum board is used, face layer joints covered with joint compound and paper tape. As an alternate, gypsum board joints may be applied to the entire surface of Chloroflex water based board with joints reinforced. When square-edge gypsum board is used, treatment of joints as optional.
- Vapor Retarder, Water Barrier or Weather Resistive Barrier** - (Optional - Not shown) - As required.
- Lead Backer Strips** - (Not Shown, For use with Item 5A) - Lead backer strips, min 2 in. wide, max 1/4 in. long with a max thickness of 1/4 in. Strips placed on the face of studs and attached to the stud with two min. 1 in. long min. Type S-12 pan head steel screws, one at the top of the strip and one at the bottom of the strip. Lead discs, max 3/16 in. diam by max 1/40 in. thick, compression fitted or adhered over the screw heads. Lead backer strips and discs to have a purity of 99.9% meeting the Federal Specification QQ-L-2011, Grade "A", C or D. Lead backer strips required behind vertical joints of lead backed gypsum wallboard (Item 5) and optional at remaining stud locations.
- Lead Discs or Tabs** - (Not Shown, For use with Item 5A) - Used in lieu of or in addition to the lead backer strips (Item 9) or optional at other locations. Max 3/16 in. diam by max 1/40 in. thick lead disc compression fitted or adhered over the screw heads or max 1/2 in. by 1-1/4 in. by max 0.125 in. thick lead tabs placed on gypsum boards (Item 5A) underhead screw locations prior to the installation of the gypsum. Lead discs or tabs to have a purity of 99.9% meeting the Federal Specification QQ-L-2011, Grade "A", C or D. Lead backer strips required behind vertical joints of lead backed gypsum wallboard (Item 5A) and optional at remaining stud locations.
- Lead Backer Strips** - (Not Shown, For use with Item 5B) - Lead backer strips, 2 in. wide, max 1/4 in. long with a max thickness of 1/4 in. Strips placed on the face of studs and attached to the stud with two min. 1 in. long min. Type S-12 pan head steel screws, one at the top of the strip and one at the bottom of the strip. Lead discs, max 3/16 in. diam by max 1/40 in. thick, compression fitted or adhered over the screw heads. Lead backer strips and discs to have a purity of 99.9% meeting the Federal Specification QQ-L-2011, Grade "A", C or D. Lead backer strips required behind vertical joints of lead backed gypsum wallboard (Item 5B) and optional at remaining stud locations.
- Lead Tabs** - (Not Shown, For use with Item 5B) - Lead tabs, 5 in. long with a max thickness of 0.142 in. Tabs required at each location where a screw (Item 5) secures the gypsum boards, Item 5B) will penetrate the steel stud. Lead tabs to have a purity of 99.9% meeting the Federal Specification QQ-L-2011, Grade "A", C or D. Lead tabs may be held in place with non-sanded adhesive tape if necessary.

WALLS WITH LESS THAN OR EQUAL TO FINISHED CEILING 4'-0" SHALL BE CAPPED OFF @ 4'-0" AFF UNLESS NOTED OTHERWISE.
 WALLS WITH 4'-0" CEILING HEIGHTS SHALL BE CAPPED OFF @ 4'-0" AFF. BRACE TO STRUCTURE AS REQUIRED. IF WALLS CONTINUE TO STRUCTURE INSTALL SOUND INSULATION TO ABOVE CEILING.



- 1 INTERIOR HALL TYPE TYPICAL UNLESS NOTED OTHERWISE
- 2 1 HR. RATED WALL
- 3 4 HR RATED WALL

WALL TYPES
 SCALE: 3/4" = 1'-0"

CLEMMONS FIRST BAPTIST CHURCH NARTHEX ADDITION

