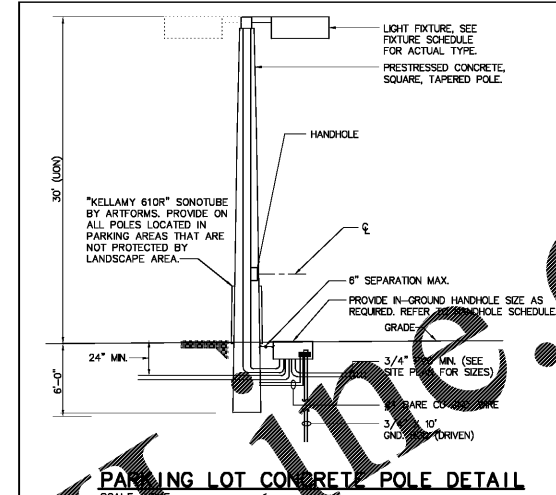
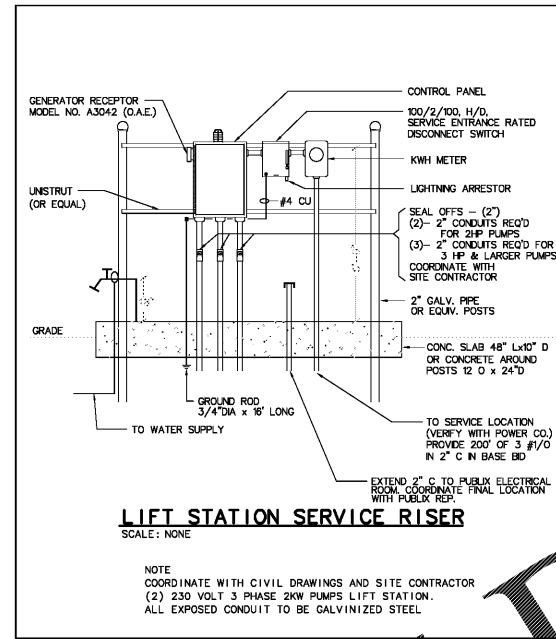


Order Plans @ www.lideline.com



- GENERAL NOTES
- AT EVERY POLE LOCATION THE CONTRACTOR SHALL PROVIDE A 3/4"X10" COPPER AND GROUNDING CONDUCTED TO A #4 BARE COPPER CONDUCTOR, CAST IN POLYMER EXTENDED TO THE TOP SLIP FITTER. EQUIPMENT GROUNDING CONDUCTORS SHALL ALSO BE BONDED TO THE GROUND ROD. ALL CONNECTIONS TO THE GROUND ROD SHALL BE BY EXOTHERMIC WELD CONNECTION.
 - ALL POLES SHALL BE PROVIDED WITH HAND HOLES (MINIMUM 3"X5").
 - PROVIDE ALL HARDWARE NECESSARY TO COMPLETE THE INTENDED INSTALLATION.
 - CONTRACTOR SHALL BE REQUIRED TO SUBMIT CALCULATIONS FROM THE POLE MANUFACTURER SEALED BY A STRUCTURAL ENGINEER LICENSED IN THE STATE OF SOUTH CAROLINA, TO CERTIFY CONFORMANCE OF EACH ENTIRE POLE AND FIXTURE ASSEMBLY TO THE FOLLOWING STANDARDS:
 - 90 MPH IN ACCORDANCE WITH AASHTO SPECIFICATIONS.
 - CONTRACTOR IS TO FURNISH AND INSTALL IN-LINE BALLAST FUSES IN BUSSELMANN "TROM" WEATHERPROOF FUSE HOLDERS #JEB-SERIES WITH KIT FUSES (SIZE AS REQUIRED). FUSE EACH LUMINAIRE SEPARATELY. LOCATE FUSES IN HANDHOLE OF POLE.
 - AN IN-GROUND HANDHOLE SHALL BE INSTALLED AT EVERY POLE LOCATION WHETHER OR NOT INDICATED ON THE DRAWINGS. THE HANDHOLE SHALL BE SIZED TO CONTAIN ALL CONNECTOR KITS, AND GROUND RODS. ALL CONNECTIONS IN HANDHOLE SHALL BE MADE WITH WATERPROOF, SNAP-LOCK GEL FILLED CONNECTOR KITS EQUAL TO CMC #DSR2/0 OR RAYCHEM #GTAP-2 AND KING "DRY-CONN" WIRE NUTS FOR FUSE TO FIXTURE CONNECTION.

IN-GROUND HANDHOLE SCHEDULE	
MARK	DESCRIPTION
HH SMALL	POLYMER CONCRETE, UL LISTED, HANDHOLE WITH BOLT DOWN COVER AND OPEN BOTTOM. COVER TO BE LIFT OUT, LOCKING TYPE WITH (2) HEX HEAD BOLTS. COVER TO INDICATE "ELECTRIC". NOMINAL BOX SIZE: 17" W x 18" L x 12" D QUARTZITE #P0118B12/P0118C400-17, LANDSCAPE AREAS - UL TIER 5 QUARTZITE #P0118B12/P0118W400-17, PAVED PARKING AREAS - UL TIER 10
HH MEDIUM	POLYMER CONCRETE, UL LISTED, HANDHOLE WITH BOLT DOWN COVER AND OPEN BOTTOM. COVER TO BE LIFT OUT, LOCKING TYPE WITH (2) HEX HEAD BOLTS. COVER TO INDICATE "ELECTRIC". NOMINAL BOX SIZE: 17" W x 24" L x 18" D QUARTZITE #P0128B18/P0128C400-17, LANDSCAPE AREAS - UL TIER 5 QUARTZITE #P0118B12/P0118W400-17, PAVED PARKING AREAS - UL TIER 10
HH LARGE	POLYMER CONCRETE, UL LISTED, HANDHOLE WITH BOLT DOWN COVER AND OPEN BOTTOM. COVER TO BE LIFT OUT, LOCKING TYPE WITH (2) HEX HEAD BOLTS. COVER TO INDICATE "ELECTRIC". NOMINAL BOX SIZE: 17" W x 30" L x 24" D QUARTZITE #P0128B18/P0128C400-17, LANDSCAPE AREAS - UL TIER 5 QUARTZITE #P0128B18/P0128W400-17, PAVED PARKING AREAS - UL TIER 10

NOTES:
1. CONDUITS TO BE STUBBED A MINIMUM OF 4" ABOVE GRAVEL.
2. FURNISH AND INSTALL GRVEL IN BOTTOM OF HANDHOLE FOR DRAINAGE IN ACCORDANCE WITH MANUFACTURER'S INSTRUCTIONS.
3. ALL CONNECTIONS IN HANDHOLE SHALL BE MADE WITH WATERPROOF, SNAP-LOCK GEL FILLED CONNECTOR KITS EQUAL TO CMC #DSR2/0 OR RAYCHEM #GTAP-2 AND KING "DRY-CONN" WIRE NUTS FOR FUSE TO FIXTURE CONNECTION.

1925 Prospect Ave.
Orlando, FL 32814
P (407) 661-9100
F (407) 661-9101
www.cpe.com

WindCrest Companies
605 E. Robinson Street, Suite 340
Orlando, Florida 32801

Publix/Retail @ Lake Crossing
South Lake Drive & Platt Springs Road
Levinston, South Carolina

ELECTRICAL SITE DETAILS

No.	Description	Date
A	100% Final Submission	03/07/17
B	100% Public	05/17/17
A	Included for Bid/Permit	06/01/17

DATE: 03-17-17
DRAWN: SW
CHECKED: DS

Job Number: 51207
Colwill Engineering
Consulting Engineers, Inc.
Engineering Division No. CO 2007-PE
4790 East Adams Drive, Tampa, Florida 33606
Tel: 813-841-0800 Fax: 813-841-4848
© 2017 ALL RIGHTS RESERVED

ES200