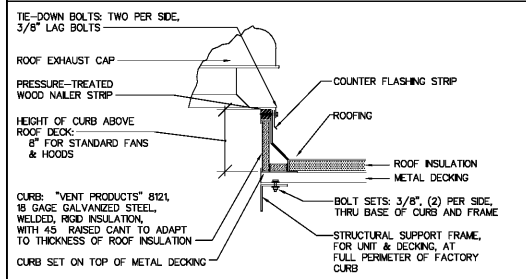
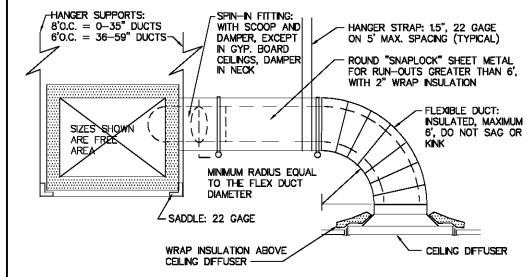


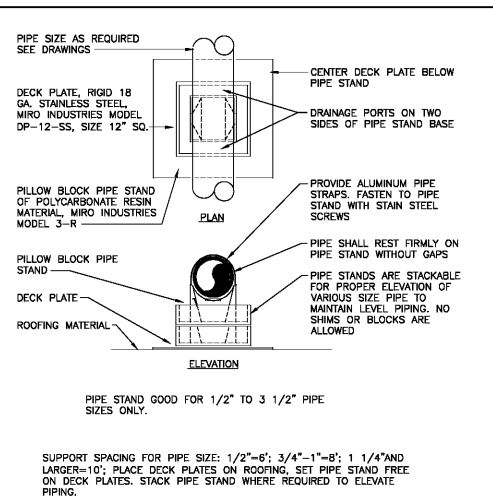
BATH FAN DETAIL
SCALE: NONE



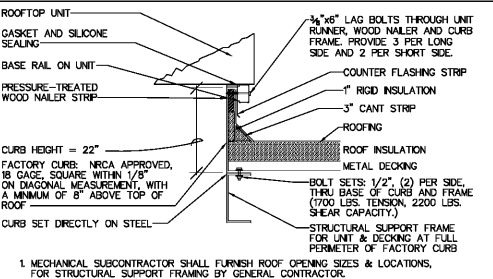
CURB DETAIL: FAN ROOF CAP
SCALE: NONE



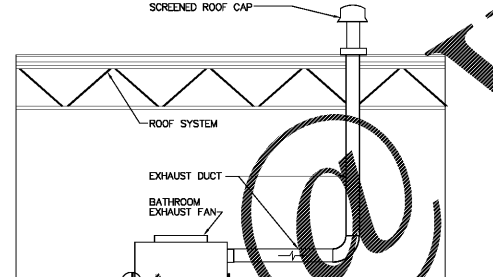
TYPICAL FIBERGLASS DUCT DETAIL
SCALE: NONE



ROOF CONDENSATE PIPE SUPPORT DETAIL
SCALE: NONE



RTU CURB/TIE DOWN DETAIL
SCALE: NONE



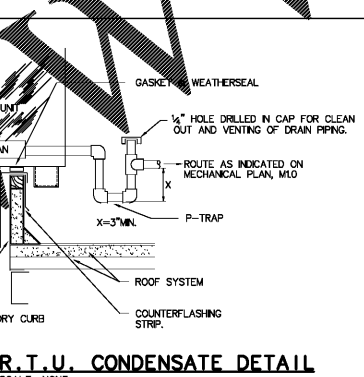
BATH FAN DETAIL
SCALE: NONE

	OUTSIDE		INSIDE	
	DB °F	WB °F	DB °F	RH %
SUMMER	94.5	75.1	75	50%
WINTER	25.9	N/A	68	N/A

AIR HANDLER DATA		
MARK	---	AHU-1
MANUFACTURER	---	MITSUBISHI
MODEL	---	PKA-A18
CAPACITY	TONS	1
TOTAL COOLING	MBH	18
SUPPLY AIR	CFM	370
OUTSIDE AIR	CFM	0
TOTAL HEATING	MBH	19
ENTERING AIR TEMP	DB/WB	75/63
LEAVING AIR TEMP	DB/WB	52/53
EXTERNAL STATIC PRESSURE	IN H ₂ O	0.125
FAN MOTOR	FLA	0.33
ELECTRICAL DATA	V/PH/Hz	208/1/60
MCA	AMPS	1
MOCIP	AMPS	15
LOCATION	---	FIRE RISER ROOM
WEIGHT	LBS	50

HEAT PUMP UNIT DATA		
MARK	---	CJ-1
MANUFACTURER	---	MITSUBISHI
MODEL	---	PUZ-A18
CAPACITY	TONS	1
CIRCUITS	NO.	1
REFRIGERANT	TYPE	410A
EFFICIENCY	SEER/EER	15.2/-
COMPRESSOR	NO./RLA	1/12.0
CONDENSING FAN	NO./FLA	1/0.35
ELECTRICAL DATA	V/PH/Hz	208/1/60
MCA	AMPS	11
MOCIP	AMPS	30
LOCATION	---	ON ROOF
WEIGHT	LBS	100
		1-8

- NOTES
- HVAC CONTRACTOR IS RESPONSIBLE FOR ANY ADDITIONAL ELECTRICAL COSTS WHICH MAY RESULT FROM SUBSTITUTED EQUIPMENT.
 - AIR HANDLING UNIT AND CONDENSING FAN SHALL HAVE A SINGLE POINT ELECTRICAL CONNECTION.
 - PROVIDE TV'S AND LOW AMPIER HIGH PRESSURE SWITCHES.
 - PROVIDE LIQUID LINE FILTER DRYERS.
 - IDENTIFY EACH UNIT WITH PERMANENT LABEL.
 - APPROVED ALTERNATE MANUFACTURERS: TOSHIBA.
 - PROVIDE LOW AMPERE KIT.
 - PROVIDE EXTERNAL ELECTRIC HEATER W/STEATITE.



FAN SCHEDULE		
MARK	---	EF-1 THRU EF-7
MANUFACTURER	---	GREENHECK
MODEL	---	SP-A90
SERVICE	---	RESTROOM
AIR QUANTITY	CFM	50
EXTERNAL STATIC PRESSURE	IN H ₂ O	0.25
FAN TYPE	---	CENTRIFUGAL
MAXIMUM FAN SPEED	RP/M	900
DRIVE	---	DIRECT
MOTOR	HP(W)	29.4 W
ELECTRICAL	V/PH/Hz	115/1/60
CONTROLS	---	SWITCH W/ LIGHTS
SONES	---	1.2
WEIGHT	LBS.	12
NOTES	---	1-5

- NOTES
- PROVIDE FACTORY MOUNTED DISCONNECT SWITCH.
 - PROVIDE WITH AUTOMATIC BACKDRAFT DAMPER.
 - PROVIDE WITH SOLID STATE SPEED CONTROLLER.
 - APPROVED ALTERNATE MANUFACTURER: COOK.
 - PROVIDE WALL CAP WITH BIRD/INSECT SCREEN.
 - PROVIDE FACTORY FABRICATED ROOF CURB.
 - PROVIDE WITH BIRD/INSECT SCREEN.
 - CONTROL WITH REVERSE ACTING THERMOSTAT.

OUTSIDE AIR CALCULATION SCHEDULE						
SPACE	GROSS AREA (sq.ft.)	OCCUPANCY	REQUIREMENTS	REQUIRED CFM	PROVIDED CFM	NOTES
RETAIL SPACE (TYP)	1400	9	SEE NOTE 2	236	240	1, 2

- NOTE
- OUTSIDE AIR CALCULATIONS BASED ON ASHRAE 62.1-2010
 - REQUIREMENTS BASED ON 7.5 CFM/PERSON AND 0.12 CFM/SQUARE FOOT.

AIR DISTRIBUTION SCHEDULE						
MARK	MANUFACTURER	MODEL	TYPE	MATERIAL	NOTES	
CD1	PRICE	ASCO	CEILING DIFFUSER, LAY-IN	ALUMINUM	1, 2, 3, 4, 5, 6	
CD2	PRICE	ACVD	CEILING DIFFUSER, SURFACE MTD.	ALUMINUM	1, 2, 3, 4, 5, 6	
RG1	PRICE	630	RETURN GRILLE, LAY-IN	ALUMINUM	1, 2, 3, 5, 6	
L-1	GREENHECK	ESD435X	OUTDOOR AIR LOUVER	ALUMINUM	7, 8	

- NOTES
- NOISE CRITERIA NOT TO EXCEED 25.
 - CONTRACTOR TO COORDINATE BORDER WITH CEILING TYPE.
 - REFER TO FLOOR PLAN FOR CFM.
 - AIR DEVICES ARE 4-WAY THROW.
 - PROVIDE MANUAL VOLUME DAMPER AT MAIN TRUNK TAKEOFF FOR BALANCING.
 - APPROVED ALTERNATE MANUFACTURERS: TITUS AND METAL AIRE
 - PROVIDE BIRD/INSECT SCREEN IN REMOVABLE ALUMINUM FRAME.
 - APPROVED ALTERNATE MANUFACTURERS SHALL BE SUBMITTED FOR REVIEW.

ELECTRIC UNIT HEATER		
MARK	---	RE-1
MANUFACTURER	---	RE-1
MODEL	---	EGM
AIR FLOW	CFM	300
FAN SPEED	RP/M	1200
FAN MOTOR	HP/FLA	1/125/3
ELECTRIC HEAT	W/STEP	3.75/1
ELECTRICAL DATA	V/PH/Hz	208/1/60
WEIGHT	LBS	20
LOCATION	---	FIRE RISER ROOM
NOTES	---	1-5

- NOTES
- PROVIDE WALL MOUNTED SUSPENSION KIT.
 - INTERLOCK WITH CU-1.
 - PROVIDE UNIT MOUNTED THERMOSTAT. SET AT 40 DEGREES F.
 - HEATER SHALL BE INSTALLED ACCORDING TO MANUFACTURER'S SPECIFICATIONS AND ALL APPLICABLE LOCAL AND NATIONAL CODES.
 - UNIT SHALL BE UL LISTED AND CSA CERTIFIED.
 - PROVIDE SINGLE POINT POWER CONNECTION.

RTU SCHEDULE		
MARK	---	RTU-1 THRU 7
MANUFACTURER	---	LENNOX
MODEL	---	LGH04854
SUPPLY AIR	CFM	1600
OUTSIDE AIR	CFM	240
CAPACITY	TONS	4.0
TOTAL COOLING	MBH	48
SENSIBLE COOLING	MBH	38
EXTERNAL STATIC PRESSURE	IN H ₂ O	0.8
GAS HEAT INPUT	MBH	150.0
GAS HEAT OUTPUT	MBH	120.0
EVAPORATOR FAN	HP/FLA	0.75/3.5
FILTER TYPE	---	THROWAWAY
COMPRESSOR	NO./RLA	1/14
CONDENSING FAN	NO./FLA	1/1.7
COMBUSTION FAN	FLA	---
ELECTRICAL DATA	V/PH/Hz	208/3/60
MCA	AMPS	26
FUSE/MOCIP	AMPS	35
EFFICIENCY	SEER/EER	15.0/-
WEIGHT	LBS	1250
NOTES	---	1-15

- NOTES
- TRAP CONDENSATE DRAIN AT UNIT (FULL SIZE OF OPENING) MIN. 3" WATER SEAL AND EXTEND AS SHOWN.
 - ALL UNITS SHALL BE SUPPLIED WITH COMPLETE TEMPERATURE CONTROLS AND AUTOMATIC CHANGEOVER.
 - ALL CAPACITIES AT A.R.I. CONDITIONS.
 - PROVIDE WITH FACTORY FABRICATED 22" INSULATED ROOF CURB WITH SLOPED BASE TO MATCH ROOF PITCH AND SET TOP LEVEL.
 - PROVIDE SINGLE POINT POWER CONNECTION.
 - PROVIDE DUCT TRANSITIONS FROM THE SUPPLY AND RETURN DUCT OPENINGS TO THE DUCT SIZES SHOWN ON THE DRAWINGS.
 - HVAC CONTRACTOR SHALL BE RESPONSIBLE FOR ANY ADDITIONAL ELECTRICAL COSTS WHICH MAY RESULT FROM SUBSTITUTED EQUIPMENT.
 - PERMANENTLY IDENTIFY ALL SYSTEMS WITH THE ROOF TOP UNIT DESIGNATION AND SPACE NUMBER SERVED.
 - INSTALL FILTERS IN UNIT PRIOR TO STARTUP AND PROVIDE NEW SET OF FILTERS AT COMPLETION OF CONSTRUCTION PRIOR TO TEST AND BALANCE.
 - ELECTRICAL POWER AND CONTROL CONDUITS SHALL RISE UP INSIDE THE CURB OF THE RTU.
 - DISCONNECT SWITCH SHALL BE PROVIDED BY ELECTRICAL CONTRACTOR.
 - CONVENIENCE OUTLET SHALL BE PROVIDED BY ELECTRICAL CONTRACTOR.
 - APPROVED ALTERNATE MANUFACTURERS: TRANE AND CARRIER.
 - PROVIDE AND INSTALL WITH FACTORY ECONOMIZER PACKAGE INCLUDING POWER EXHAUST.
 - ALL OUTSIDE AIR INTAKES SHALL HAVE MOTORIZED VOLUME DAMPERS.

1925 Prospect Ave.
Orlando, FL 32814
P (407) 661-9100
F (407) 661-9101
www.e-p.com

Colucci & Retzlaff
Architects & Engineers

WindCrest Companies
605 E. Robinson Street, Suite 340
Orlando, Florida 32801

Publix/Retail @ Lake Crossing
South Lake Drive & Platt Springs Road
Lexington, South Carolina

MECHANICAL SCHEDULES AND DETAILS		
PROJECT NO.	216102	DATE
REVISION	03/17/17	DATE
NO.	DESCRIPTION	DATE
A	100% PLAN SUBMISSION	03/17/17
B	100% PERMITS SUBMISSION	03/17/17
C	100% PERMITS SUBMISSION	03/17/17
D	100% PERMITS SUBMISSION	03/17/17
E	100% PERMITS SUBMISSION	03/17/17
F	100% PERMITS SUBMISSION	03/17/17
G	100% PERMITS SUBMISSION	03/17/17
H	100% PERMITS SUBMISSION	03/17/17
I	100% PERMITS SUBMISSION	03/17/17
J	100% PERMITS SUBMISSION	03/17/17
K	100% PERMITS SUBMISSION	03/17/17
L	100% PERMITS SUBMISSION	03/17/17
M	100% PERMITS SUBMISSION	03/17/17
N	100% PERMITS SUBMISSION	03/17/17
O	100% PERMITS SUBMISSION	03/17/17
P	100% PERMITS SUBMISSION	03/17/17
Q	100% PERMITS SUBMISSION	03/17/17
R	100% PERMITS SUBMISSION	03/17/17
S	100% PERMITS SUBMISSION	03/17/17
T	100% PERMITS SUBMISSION	03/17/17
U	100% PERMITS SUBMISSION	03/17/17
V	100% PERMITS SUBMISSION	03/17/17
W	100% PERMITS SUBMISSION	03/17/17
X	100% PERMITS SUBMISSION	03/17/17
Y	100% PERMITS SUBMISSION	03/17/17
Z	100% PERMITS SUBMISSION	03/17/17