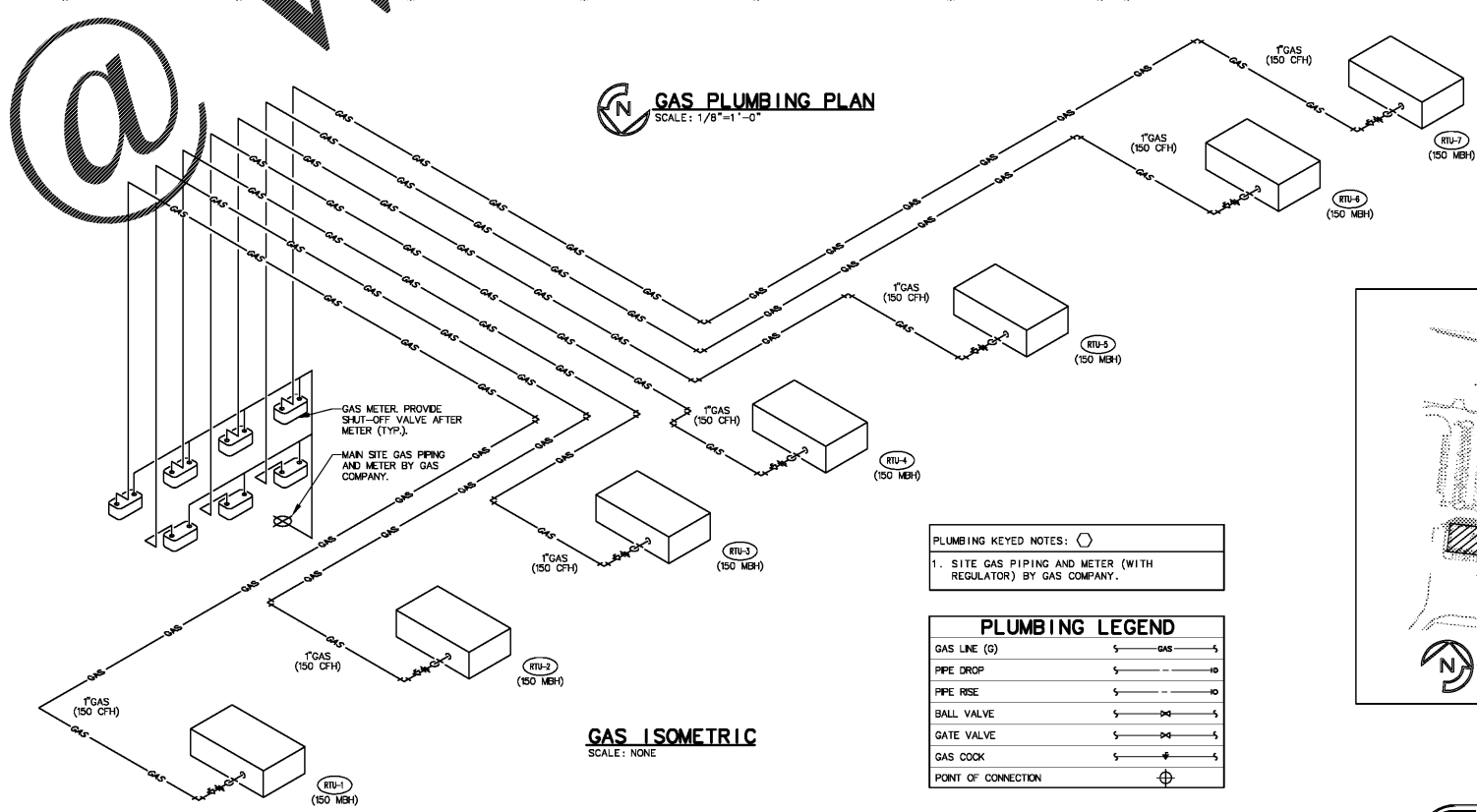
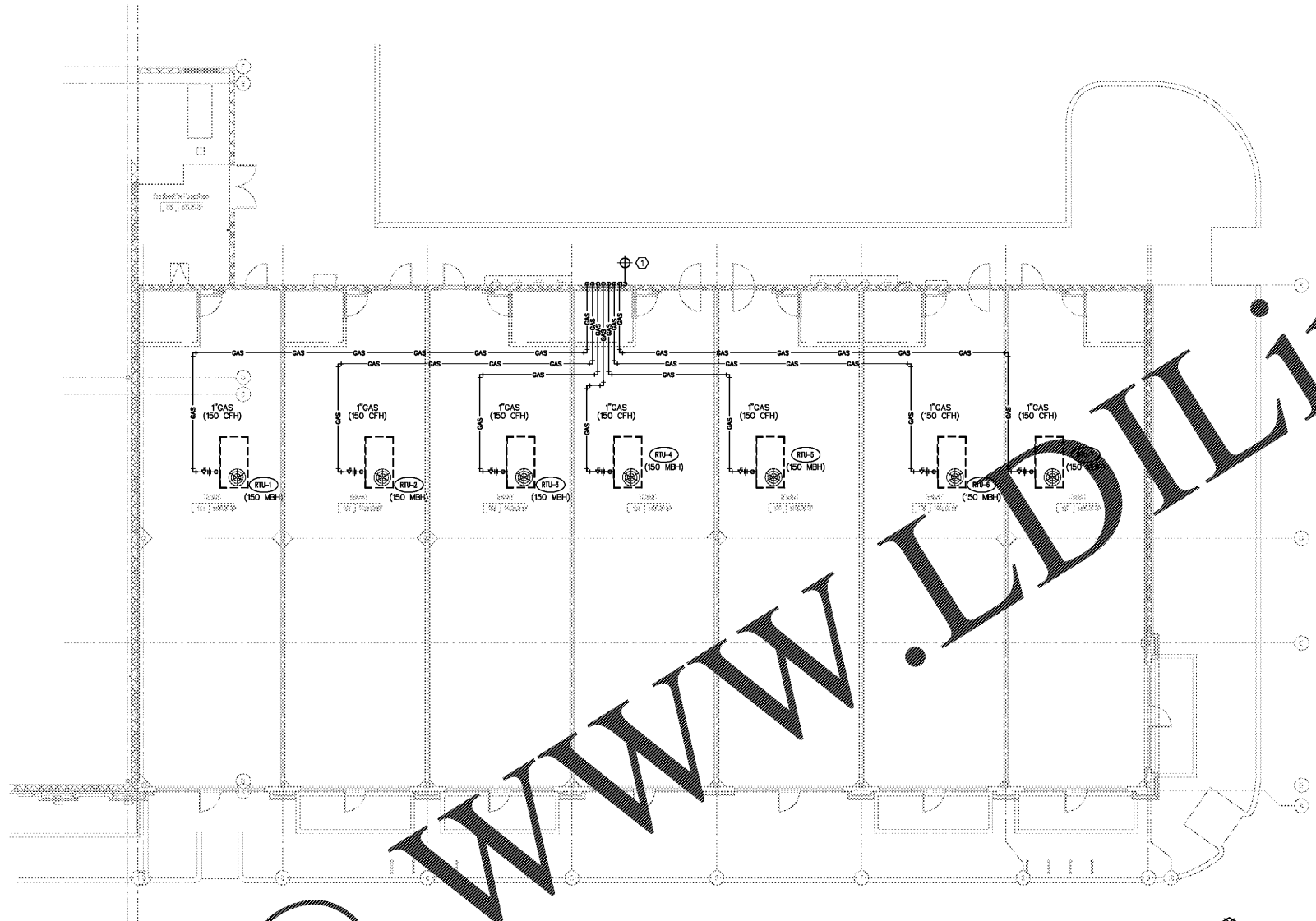


Order Forms



- GAS PIPING**
1. GAS PIPING SHALL BE INSTALLED IN ACCORDANCE WITH THE SOUTH CAROLINA FUEL GAS CODE OR NFPA-54 WHERE REQUIREMENTS ARE MORE STRINGENT.
 2. ALL GAS EQUIPMENT SHALL BE AGA APPROVED.
 3. THE INSTALLATION SHALL BE FOR NATURAL GAS.
 4. THE INSTALLING SUBCONTRACTOR SHALL BE LICENSED IN THE INSTALLATION OF NATURAL GAS.
 5. ABOVE GROUND GAS PIPING SHALL BE SCHEDULE 40, WELDED SEAMLESS, WROUGHT STEEL PIPE (NOM. 10.0) WITH THREADED FITTINGS. UNDERGROUND GAS PIPING SHALL BE POLYETHYLENE (PE) PIPE (ASTM D-2513), PROVIDED WITH TRACER WIRE OR MAGNETIC TAPE.
 6. ANY GAS PIPING WHICH IS EXPOSED, SHALL BE PAINTED WITH BLACK "RUSTOLEUM" PAINT. VERIFY COLOR WITH ARCHITECT.
 7. GAS PIPING SHALL BE TIGHT TO THE ROOF STRUCTURE, SUPPORTED WITH HANGERS BY GRIP ALL OR EQUAL.
 8. BRANCH TAPS MUST BE MADE OFF OF THE TOP OF THE PIPING.
 9. CONNECTION TO EACH PIECE OF EQUIPMENT SHALL INCLUDE AN INVERTED SUMP, A GAS COCK, A UNION AND A DIRT LEG. CONNECTIONS SHALL BE MADE WITH NO FLEX.
 10. ALL GAS FLUES SHALL BE MINIMUM OF 10'-0", OR AS REQUIRED BY CODE, AWAY FROM FRESH AIR INTAKES.

TYPICAL GAS DEMAND (SUITE #101 THRU #107)

①	FIXTURE	CONN.	MEH EACH	QTY EACH	MEH ALL
1	ROOF TOP UNIT (TYPICAL RTU-1 THRU RTU-7)	1"	150	1	150
TOTAL MEH					150

SYSTEM SIZED FOR 0.6 SPECIFIC GRAVITY GAS AND DELIVERY OF 0.25 PSI WITH A 0.5" WC. GAS PIPE SIZED ON 125 FT. (RTU-1 THRU RTU-7) 2015 SOUTH CAROLINA FUEL GAS CODE, TABLE 402.4(2) (MEH RATING FOR THE EQUIPMENT IS DETERMINED BY THE MANUFACTURER.)

GAS PLUMBING PLAN
SCALE: 1/8"=1'-0"

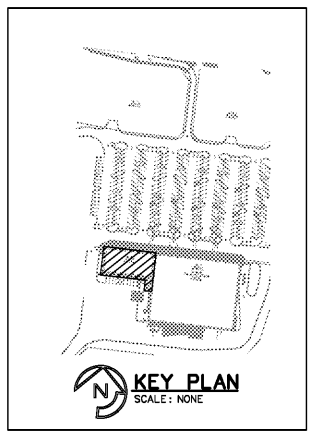
GAS ISOMETRIC
SCALE: NONE

PLUMBING KEYED NOTES:

1. SITE GAS PIPING AND METER (WITH REGULATOR) BY GAS COMPANY.

PLUMBING LEGEND

GAS LINE (G)	---
PIPE DROP	---
PIPE RISE	---
BALL VALVE	○
GATE VALVE	○
GAS COCK	○
POINT OF CONNECTION	⊕



Job Number: 51207
Colwill Engineering
 Consulting Engineers, Inc.
 Engineering Business No. CO 2557-PB
 5750 East Adams Drive, Tampa, Florida 33605
 Tel: 813-941-0800 Fax: 813-941-0406
 © 2017 ALL RIGHTS RESERVED

1925 Prospect Ave.
Orlando, FL 32814
P (407) 661-9100
F (407) 661-9101
www.cpa.com

Colwill & Retz
Architects & Retainers

CLIENT NAME
WindCrest Companies
605 E. Robinson Street, Suite 340
Orlando, Florida 32801

PROJECT NAME
Publix/Retail @ Lake Crossing
South Lake Drive & Platt Springs Road
Lexington, South Carolina

PROJECT NO. 216102
DATE 03-17-17
DATE 03-17-17
DATE 03-17-17
DATE 03-17-17
DATE 03-17-17

REVISION

No.	Description	Date
A	100% Final Submission	03/17/17
B	100% Public Submission	03/17/17
C	Final Submission	03/17/17
D	Final Submission	03/17/17

CHECKED LR
DATE 03/17/17

P101