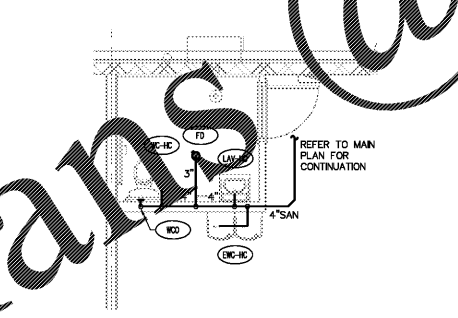
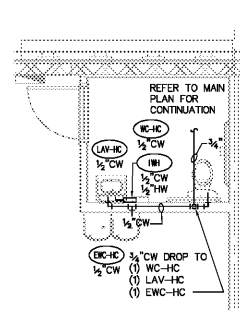


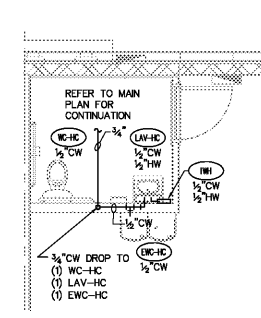
ENLARGED FIRE PUMP ROOM PART PLAN - WATER
SCALE: 1/4"=1'-0"



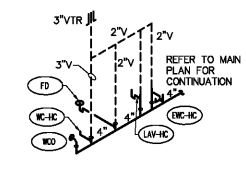
ENLARGED PLUMBING PLAN - SANITARY
SCALE: 1/4"=1'-0"



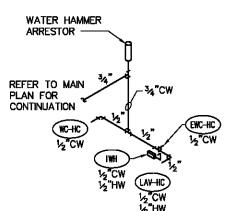
ENLARGED PLUMBING PLAN - WATER
SCALE: 1/4"=1'-0" TENANT 103, 105 & 107



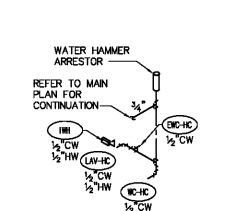
ENLARGED PLUMBING PLAN - WATER
SCALE: 1/4"=1'-0" TENANT 101, 102, 104 & 106



SANITARY ISOMETRIC
SCALE: NONE



WATER ISOMETRIC
SCALE: NONE

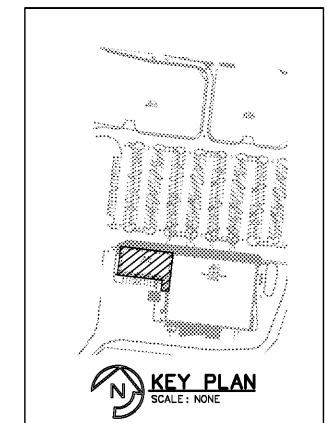


WATER ISOMETRIC
SCALE: NONE

- KEYED NOTES**
1. EXTEND AND CONNECT 4" SANITARY TO SITE SEWER SYSTEM. MINIMUM INVERT ELEVATION=30" B.F.F. COORDINATE WITH CIVIL UTILITY PLANS. PRIOR TO COMMENCEMENT OF WORK.
 2. EXTEND AND CONNECT TO SITE DOMESTIC WATER SUPPLY MAIN.
 3. EXTEND 3/4" CW AND SUB-METER FOR TENANT SPACE.
 4. COORDINATE FINAL LOCATION WITH FIRE PUMP LOCATION.
 5. EXTEND AND CONNECT TO SITE SANITARY SEWER. MIN. I.E. = 24" B.F.F. COORDINATE LOCATION AND INVERT WITH CIVIL PLANS PRIOR TO COMMENCEMENT OF WORK. (TYPICAL)
 6. HOUSE METER FOR 1" CW TO HOSE BIBBS.
 7. DOWNSPOUT, REFER TO ARCHITECTURAL DRAWING. (TYP)
 8. EXTEND AND CONNECT TO GREASE TRAP. COORDINATE LOCATION AND INVERT WITH CIVIL PLANS PRIOR TO COMMENCEMENT OF WORK.
 9. EXTEND CONNECT HUB DRAN PIPING TO EXISTING 4" ST. COORDINATE LOCATION AND INVERT WITH CIVIL PLANS PRIOR TO COMMENCEMENT OF WORK. COORDINATE CONDENSATE PIPING DROP WITH MECHANICAL CONTRACTOR.

PLUMBING LEGEND

SANITARY SEWER (SAN)	—S—S
GREASE WASTE (GW)	—GW—S
VENT (V)	—V—S
COLD WATER (CW)	—CW—S
FLOOR CLEANOUT (FCO)	—FCO—S
CLEANOUT TO GRADE (COTG)	—COTG—S
PIPE DROP	—D—S
PIPE RISE	—R—S
SHUT-OFF VALVE	—S—S
WALL HYDRANT (WH)	—WH—S
POINT OF CONNECTION	—PC—S
CONNECTION TO EXISTING	—CE—S



KEY PLAN
SCALE: NONE

1925 Prospect Ave.
Orlando, FL 32814
P (407) 661-9100
F (407) 661-9101

Colucci & Retzlaff
Architects & Retainers
www.c-r.com

WindCrest Companies
605 E. Robinson Street, Suite 340
Orlando, Florida 32801

Publix/Retail @ Lake Crossing
South Lake Drive & Platt Springs Road
Levinston, South Carolina

PROJECT NAME	Publix/Retail @ Lake Crossing
CLIENT NAME	WindCrest Companies
DATE	03/17/17
DESCRIPTION	100% Final
DATE	03/17/17
DESCRIPTION	100% Public
DATE	03/17/17
DESCRIPTION	100% Public
DATE	03/17/17
DESCRIPTION	100% Public

Job Number: 51207
Colwill Engineering
Consulting Engineers, Inc.
Engineering Business No. CO 2557-PB
3750 East Alabama Drive, Tampa, Florida 33610
Tel: 813-841-0888 Fax: 813-841-0484
© 2017 ALL RIGHTS RESERVED

I:\131207 Publix Retail @ Lake Crossing\131207 P100.dwg, 4/2/2017 5:24:42 PM, c:\e\retail_031999a.plt, ANCI, L1, 11

Order Plans @ www.LDILine.com