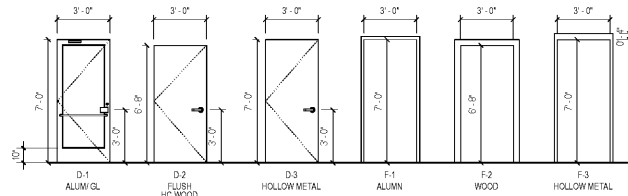


Door Schedule										
DOOR LETTER		RETAIL NUMBER								
DOOR	TYPE	LOCATION	SIZE	MATERIAL	FRAME	GLASS	HARDWARE	REMARKS		
D-1	FRONT DR	3'-0" X 7'-0"	1'-3 1/4"	ALUM	F-1	ALUM	H1, J1, S1	1	FINAL CORE PROCESS FOR LOCKSETS & KEYING	KAMNEER 350 MEDIUM STYLE
D-2	REAR DR	3'-0" X 7'-0"	1'-3 1/4"	HM	F-3	HM	H3, J3, S3	3	SUBCONTRACTORS WILL INSTALL ALL DOORS, FRAMES, HARDWARES & LOCKSETS	HM DOOR PAINT FINISH LATEX GLOSS ENAMEL HOLLOW CORE PRESHING DOOR PAINT GRADE
D-2	TOILET DR	3'-0" X 6'-8"	1'-3 1/4"	HC WOOD	F-2	WOOD	H2, J2, S2	2		PAINT TO MATCH STUCCO
D-2	FRIBER RM	3'-0" X 7'-0"	1'-3 1/4"	HM	F-3	HM	H3, J3, S3	4		

**DOOR AND FRAME NOTES**

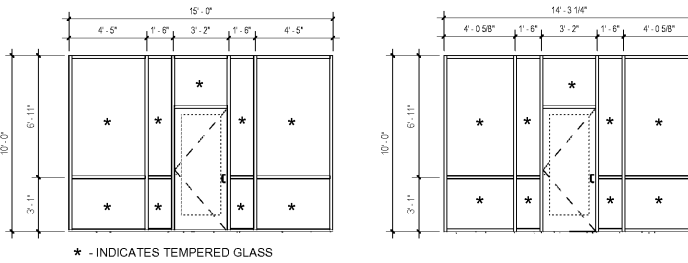
- REAR DOOR AND FRAME TO BE PAINTED ON EXT SIDE ONLY
- TOILET WOOD DOOR AND FRAME TO BE PAINTED BOTH SIDES WITH ENAMEL PAINT
- UNDERCUT TOILET ROOM DOOR, COORDINATE WITH MECHANICAL



**1 Door & Frame Types**  
SCALE: 1/4" = 1'-0"

**HARDWARE NOTES & SCHEDULE**

- ADJUST ALL CLOSERS TO A 5 LB MAX OPENING FORCE
  - CONTRACTOR TO SUBMIT TYPE WRITTEN SHOP DRAWINGS AND PRODUCT LITERATURE FOR ALL DOORS AND HARDWARE SPECIFIED. PREPARED BY A LICENSED AND CERTIFIED CONSULTANT.
  - ALL EXTERIOR HOLLOW CORE METAL DOORS ARE TO BE INSULATED. DOOR AND FRAME TO BE SHOP PRIMED AND PAINTED.
  - ALL LOCK AND PASSAGE SETS TO BE SCHLAGE GRADE OR BETTER. SUBMIT OTHERS FOR APPROVAL. LOCKS NEED TO BE REKEYABLE.
  - SUBMIT DETAILED HARDWARE SCHEDULE FOR ARCHITECT'S APPROVAL.
  - ALL DOORS AND HARDWARE TO COMPLY WITH THE SOUTH CAROLINA ACCESSIBILITY CODES AND THE A.D.A. FEDERAL REGULATION CODES, UTILIZING A LEVER LATCH OR LOCKSET.
  - ALL STORE FRONT SYSTEM DOORS AND REAR EXIT DOORS SHALL BE INDIVIDUALLY KEYED. PROVIDE 2 SETS OF KEYS FOR EACH TENANT SPACE.
  - ALL RETAIL HARDWARE TO BE MASTER KEYED (FRONT AND REAR DOORS TO USE SAME KEY). UTILIZING CONSTRUCTION CODES/SPECIFIERS THAT ARE TO BE REPLACED AT TURNOVERS BY GC (INCLUDING FURNISHING SIX (6) NEW KEYS FOR EACH UNIT).
- HARDWARE SET #1 (KAWNEER SINGLE ENTRANCE DOOR)**
- (1) SET SINGLE ACTING OFFSET PIVOT HINGES BY KAWNEER
  - (1) DOOR CLOSER - INHIBITOR 1008 SURFACE CLOSER
  - (1) 4" EXTRUDED - MILL FINISH ALUMINUM THRESHOLD (FOR OFFICE PIVOT AND OVERHEAD CLOSERS)
  - (1) ADAMS RITE 5500 LOCK/LATCH COMBINATION
  - (1) ADAMS RITE 4500 LATCH PADLOCK DEVICE
  - (1) ADAMS RITE 5" STANDARD LATCH STRIKE AS REQUIRED
  - (1) CYLINDER - SCHLAGE (P/N) MORTISE - MATCH DOOR FINISH
  - (1) 1" DOOR PUSH & GO 9" PULL #14 CLEAR ANODIZE FINISH
  - (1) SEALER WEATHERING SYSTEM AND DROM SLIDE SURFACE AT ADDED SWEEP STRIP
  - (1) CONTRACTOR INSTALLED NOTE: "DOOR TO REMAIN UNLOCKED DURING TYPE OPERATION"
- HARDWARE SET #2 (RESTROOM DOOR)**
- (1) 1/2" PAR HAGER 4 1/2" X 4 1/2" BUTT FULL MORTISE HINGES NO. 1191 FINISH 26 D, FINISH 260 (STAINLESS)
  - (3) SLIDERS
  - (1) LOCKSET SCHLAGE AL SERIES "SATURN" FINISH 606 PRIVACY LOCK
  - (1) CLOSER - LON NO. 1460 FINISH US28D MOUNTED IN ROOM
  - (1) WALL STOP
- HARDWARE SET #3 (REAR EXIT DOOR)**
- (1) 1/2" PAR HAGER 4 1/2" X 4 1/2" BUTT FULL MORTISE HINGES NO. 1191 FINISH 26D
  - (1) LOCKSET SCHLAGE AL SERIES SINGLE ACTING LEVER W KEY LOCK HEAVY DUTY MOUNTED IN ROOM
  - (1) ALUMINUM THRESHOLD
- HARDWARE SET #4 (FRIBER ROOM DOOR)**
- (1) 1/2" PAR HAGER 4 1/2" X 4 1/2" BUTT FULL MORTISE HINGES NO. 1191 FINISH 260 (STAINLESS)
  - (1) LOCKSET SCHLAGE AL SERIES SINGLE ACTING LEVER W KEY LOCK HEAVY DUTY MOUNTED IN ROOM
  - (1) ALUMINUM THRESHOLD

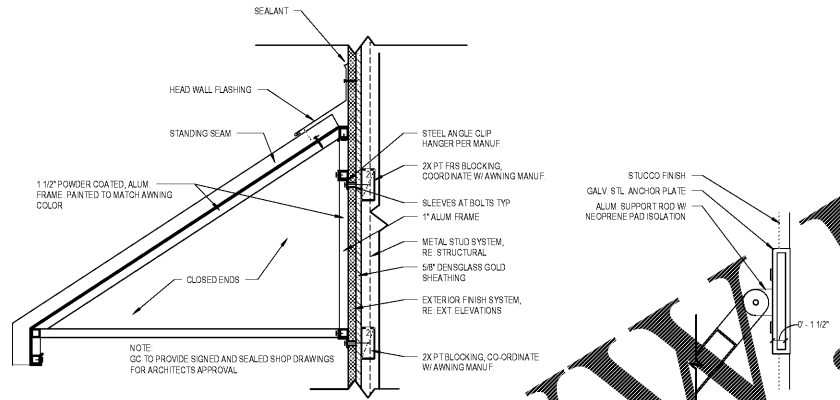


**2 Storefront Type 'A'**  
SCALE: 1/4" = 1'-0"

**2A Storefront Type 'B'**  
SCALE: 1/4" = 1'-0"

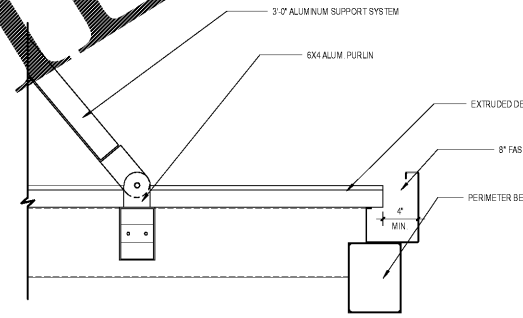
**STOREFRONT NOTES**

- NOTES**
- STOREFRONT ALUM. FINISH TO BE CLEAR ANODIZED
  - GLAZING TO BE INSULATED, NON IMPACT RATED
  - BASIS OF DESIGN - PPG BIM SOLORBAN 70XL (2) ON STARPHIRE - 067 PVB - 8MM CLEAR + 1/2" AIR + 8MM CLEAR
    - a. LOW E GLASS
    - b. U-FACTOR OF .48
    - c. SHGC OF .26
    - d. ALL PAVES TO BE TEMPERED

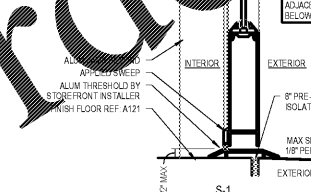
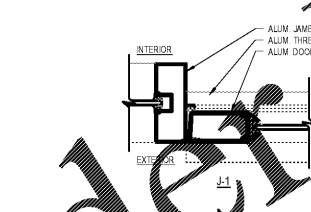
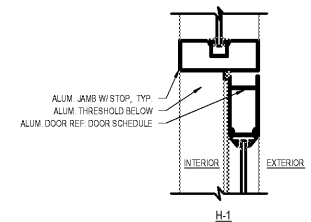


**3 Awning Detail**  
SCALE: 1 1/2" = 1'-0"

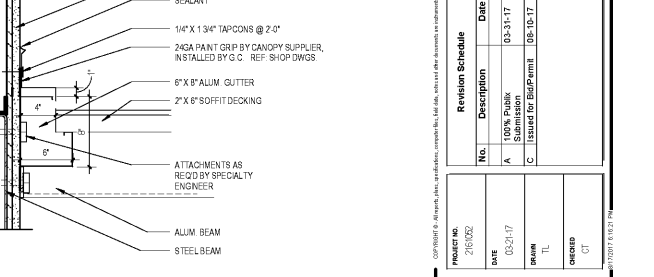
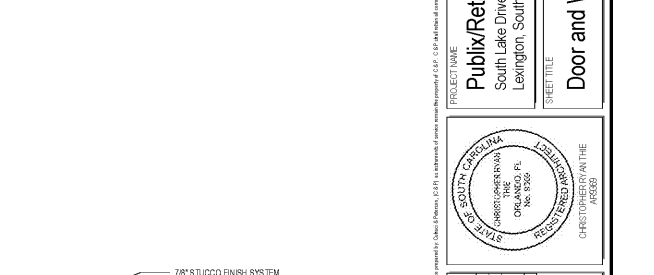
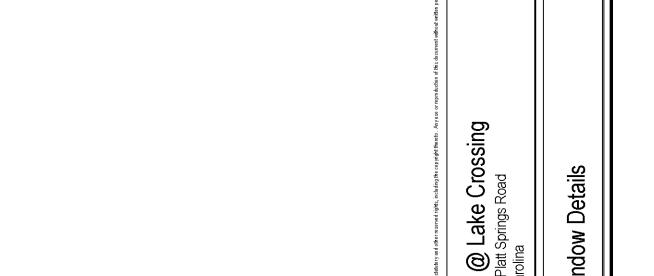
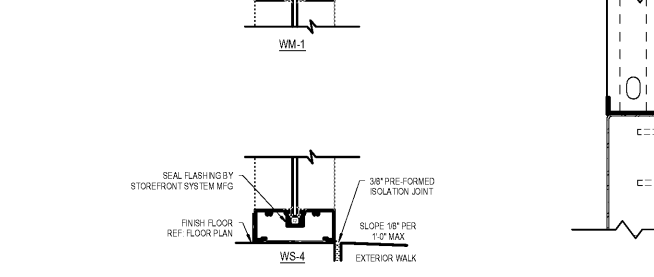
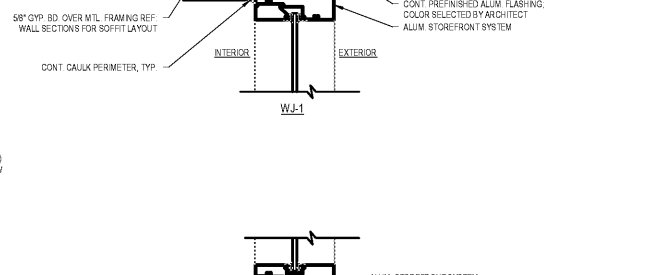
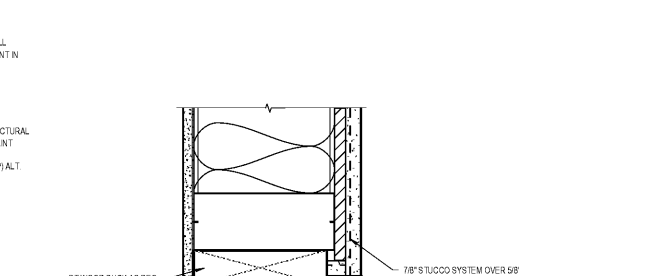
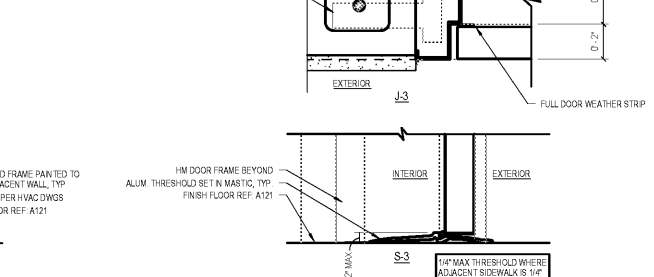
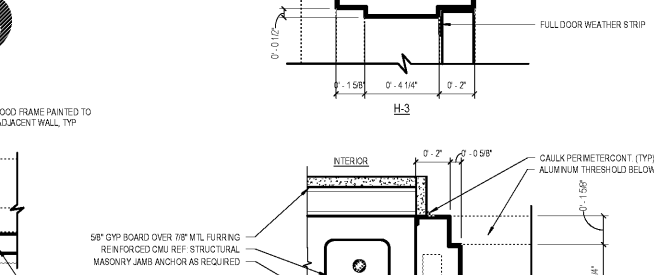
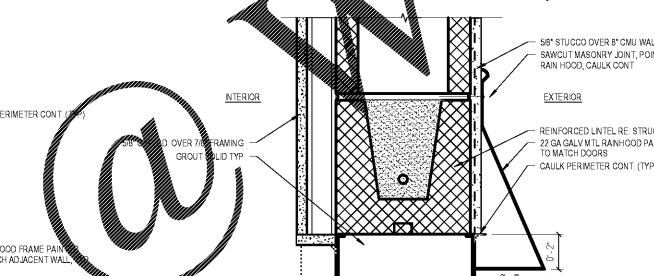
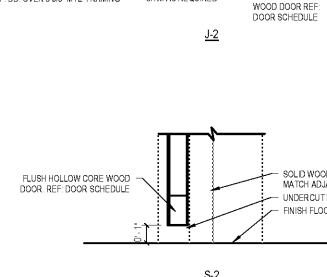
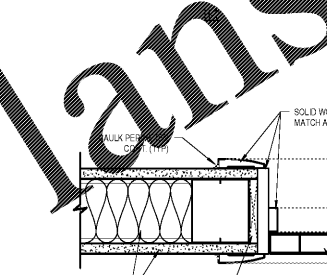
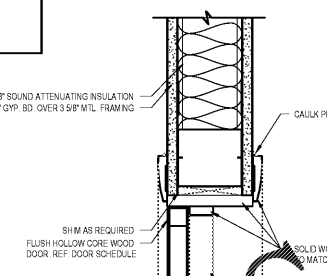
**4 Alum. Canopy Support Detail**  
SCALE: 1 1/2" = 1'-0"



**5 Alum. Canopy Detail**  
SCALE: 1 1/2" = 1'-0"



**6 Head, Jamb, & Sill Details**  
SCALE: 3" = 1'-0"



**7 Alum. Canopy Connection Detail**  
SCALE: 1 1/2" = 1'-0"

Order Plans

1925 PROSPECT AVE  
Orlando, FL 32814  
P (407) 661-9100  
F (407) 661-9101  
www.csl.com

**Publix Super Markets, Inc.**  
3300 Publix Corporate Pkwy  
Lakeland, Florida

**Publix/Retail @ Lake Crossing**  
South Lake Drive & Platt Springs Road  
Lexington, South Carolina

PROJECT NAME  
CLIENT NAME  
SHEET TITLE

No.	Description	Date
A	100% PUBLISH	03-31-17
B	ISSUE FOR PERMIT	05-10-17

**A601**