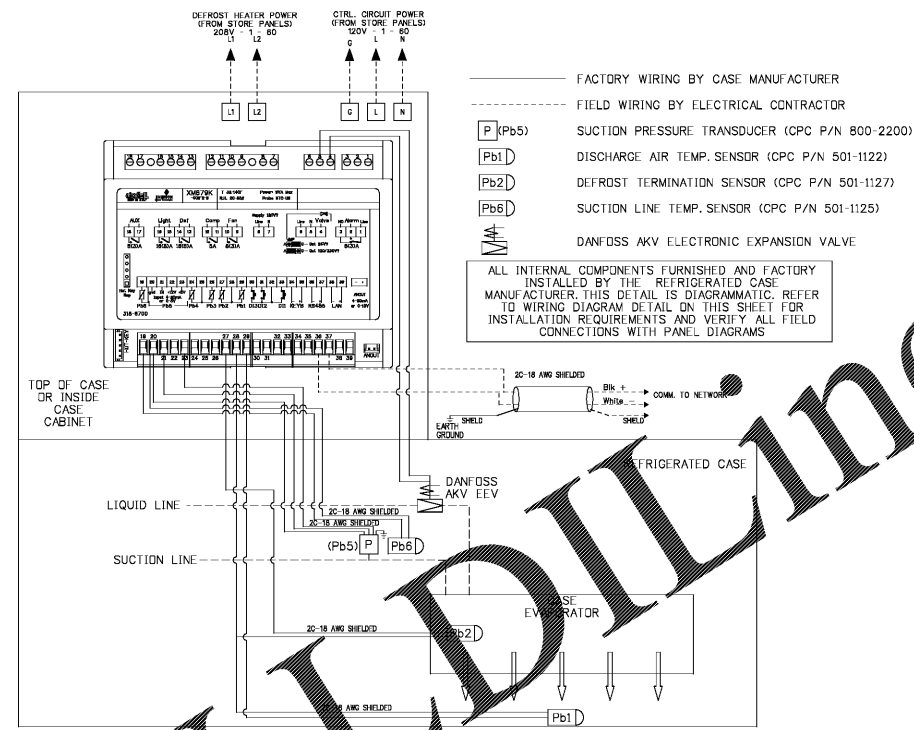


Connected To Rack #1

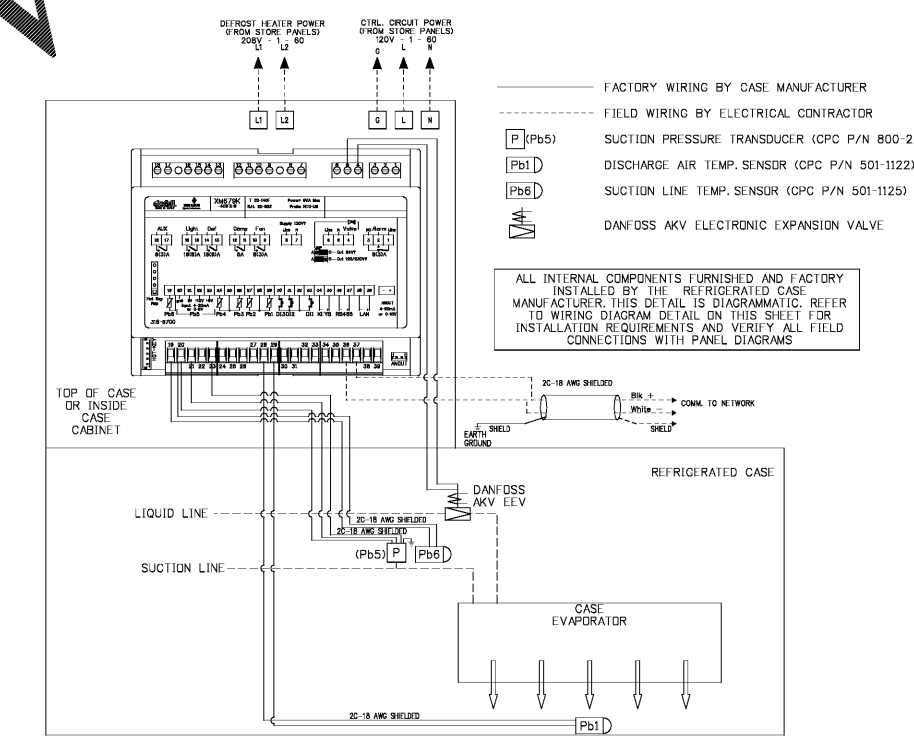
Circuit	Case Controller	Quantity	Type	Diagram Detail	Factory Installed	Field Installed
14	Dixell	1	Case	1/R-5.1	X	
15	Dixell	1	Case	1/R-5.1	X	
16	Dixell	1	Case	1/R-5.1	X	
23	Dixell	1	Case	1/R-5.1	X	
24	Dixell	1	Case	1/R-5.1	X	
25	Dixell	1	Case	1/R-5.1	X	
26	Dixell	1	Case	1/R-5.1	X	
27	Dixell	1	Case	1/R-5.1	X	
34	Dixell	1	Case	1/R-5.1	X	
35	Dixell	1	Case	1/R-5.1	X	
47A / 47B	Dixell	2	Walk-In	1/R-5.2		X
58	Dixell	1	Walk-In	2/R-5.2		X
93	Dixell	1	Walk-In	2/R-5.2		X
96	Dixell	1	Walk-In	2/R-5.2		X
98	Dixell	1	Case	1/R-5.1	X	
1	Dixell	1	Case	1/R-5.1	X	
2	Dixell	1	Case	1/R-5.1	X	
3	Dixell	1	Case	1/R-5.1	X	
4	Dixell	1	Case	1/R-5.1	X	
5	Dixell	1	Case	1/R-5.1	X	
6	Dixell	1	Case	1/R-5.1	X	
7	Dixell	1	Case	1/R-5.1	X	
8	Dixell	1	Case	1/R-5.1	X	
9	Dixell	1	Case	1/R-5.1	X	
10	Dixell	1	Case	1/R-5.1	X	
11	Dixell	1	Case	1/R-5.1	X	
12	Dixell	1	Case	1/R-5.1	X	
13	Dixell	1	Case	1/R-5.1	X	
17	Dixell	1	Case	1/R-5.1	X	
18	Dixell	1	Case	1/R-5.1	X	
19	Dixell	1	Case	1/R-5.1	X	
20	Dixell	1	Case	1/R-5.1	X	
21	Dixell	1	Case	1/R-5.1	X	
22	Dixell	1	Case	1/R-5.1	X	
29	Dixell	1	Case	1/R-5.1	X	
28	Dixell	1	Case	1/R-5.1	X	
63	Dixell	1	Case	1/R-5.1	X	

Connected To Rack #2

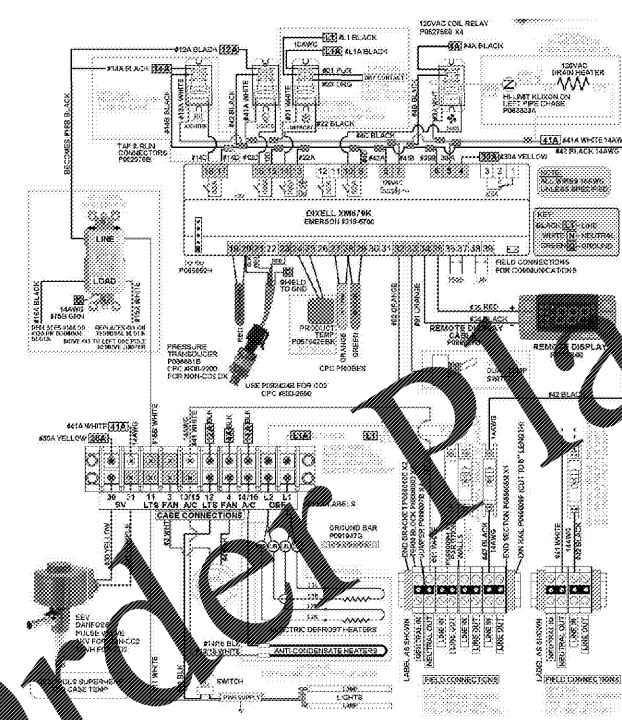
Circuit	Case Controller	Quantity	Type	Diagram Detail	Factory Installed	Field Installed
48A/48B	Dixell	2	Walk-In	3/R-5.2		X
59	Dixell	1	Walk-In	2/R-5.2		X
60A / 60B	Dixell	2	Walk-In	1/R-5.2		X
64	Dixell	1	Case	2/R-5.1	X	
65	Dixell	1	Case	2/R-5.1	X	
80	Dixell	1	Case	2/R-5.1	X	
81A / 81B	Dixell	2	Case	2/R-5.1	X	
86	Dixell	1	Case	2/R-5.1	X	
94	N/A	N/A	N/A	N/A	N/A	N/A
95	Dixell	1	Case	2/R-5.1	X	
97	Dixell	1	Case	2/R-5.1	X	
99	Dixell	1	Case	2/R-5.1	X	
100	Dixell	1	Case	2/R-5.1	X	
30	Dixell	1	Case	2/R-5.1	X	
31	Dixell	1	Case	2/R-5.1	X	
32	Dixell	1	Case	2/R-5.1	X	
33	Dixell	1	Case	2/R-5.1	X	
36	Dixell	1	Case	2/R-5.1	X	
37	Dixell	1	Case	2/R-5.1	X	
38	Dixell	1	Case	2/R-5.1	X	
39	Dixell	1	Case	2/R-5.1	X	
40	Dixell	1	Case	2/R-5.1	X	
41	Dixell	1	Case	2/R-5.1	X	
42	Dixell	1	Case	2/R-5.1	X	
43	Dixell	1	Case	2/R-5.1	X	
44	Dixell	1	Case	2/R-5.1	X	
45	Dixell	1	Case	2/R-5.1	X	
46	Dixell	1	Case	2/R-5.1	X	
49	Dixell	1	Case	2/R-5.1	X	
50	Dixell	1	Case	2/R-5.1	X	
51	Dixell	1	Case	2/R-5.1	X	
52	Dixell	1	Case	2/R-5.1	X	
53	Dixell	1	Case	2/R-5.1	X	
54	Dixell	1	Case	2/R-5.1	X	
55	Dixell	1	Case	2/R-5.1	X	
56	Dixell	1	Case	2/R-5.1	X	
57	Dixell	1	Case	2/R-5.1	X	
61	Dixell	1	Walk-In	4/R-5.2		X
62	Dixell	1	Walk-In	4/R-5.2		X
66	Dixell	1	Case	2/R-5.1	X	
67	Dixell	1	Walk-In	4/R-5.2		X
68	Dixell	1	Walk-In	4/R-5.2		X
69	Dixell	1	Case	2/R-5.1	X	
70	Dixell	1	Case	2/R-5.1	X	
71	Dixell	1	Case	2/R-5.1	X	
72	Dixell	1	Case	2/R-5.1	X	
73	Dixell	1	Walk-In	4/R-5.2		X
74	Dixell	1	Walk-In	4/R-5.2		X
75	Dixell	1	Case	2/R-5.1	X	
76	Dixell	1	Case	2/R-5.1	X	
77	Dixell	1	Case	2/R-5.1	X	
78	Dixell	1	Case	2/R-5.1	X	
79	Dixell	1	Case	2/R-5.1	X	
83A / 83B	Dixell	2	Case	2/R-5.1	X	
85	Dixell	1	Case	2/R-5.1	X	
87	Dixell	1	Case	2/R-5.1	X	
88	Dixell	1	Case	2/R-5.1	X	
89	Dixell	1	Case	2/R-5.1	X	
90	Dixell	1	Case	2/R-5.1	X	
91	Dixell	1	Walk-In	4/R-5.2		X
92	Dixell	1	Walk-In	4/R-5.2		X



1 DIXELL CASE CONTROLLER WIRING DIAGRAM (ELECTRIC DEFROST, REFRIGERATED CASE)



2 DIXELL CASE CONTROLLER WIRING DIAGRAM (TIMED OFF DEFROST, REFRIGERATED CASE)



ALL REFRIGERATED CASES REQUIRING REMOTE REFRIGERATION SHALL BE PROVIDED WITH FACTORY INSTALLED CPC CASE CONTROLLER BOARDS AS INDICATED ON THIS DETAIL. CASE MANUFACTURER SHALL ALSO FACTORY INSTALL ALL REQUIRED TEMPERATURE PROBES, PRESSURE TRANSDUCERS, ELECTRONIC EXPANSION VALVES, BREAKERS AND RELAYS AS REQUIRED. ALL COMPONENT SHALL BE FACTORY PRE-WIRED TO MAXIMUM EXTENT TO CASE CONTROLLER AND TERMINAL BLOCK AS INDICATED ON THIS DETAIL. THE ENTIRE INSTALLATION SHALL FOLLOW CPC RECOMMENDATIONS.

MANUFACTURER WIRING DIAGRAM (REFRIGERATED CASE)

CORPORATE OFFICES, FACILITIES DESIGN
3000 FARMERS CORPORATE PARKWAY
LAKELAND, FL 32811-2111

PUBLIX FACILITIES DESIGN DEPARTMENT

DAVID
ARCHITECTURAL ENGINEER
P.E.
AL REG. 31847
FL REG. 31847
NC REG. 31847
VA REG. 31847

JOHN J. CARMALIS, PE
MECHANICAL
FL REG. 31847
AL REG. 31847
NC REG. 31847
VA REG. 31847

ANTHONY CLEMENTI, PE
MECHANICAL
FL REG. 31847
AL REG. 31847
NC REG. 31847
VA REG. 31847

RAYMOND J. SIRIANNI, PE
ELECTRICAL
FL REG. 31847
AL REG. 31847
NC REG. 31847
VA REG. 31847

NORMAN MEIER, PE
ELECTRICAL
FL REG. 31847
AL REG. 31847
NC REG. 31847
VA REG. 31847

© COPYRIGHT 2017
THE PUBlix STORES, INC.

THIS CONNECTION DOCUMENT IS THE PROPERTY OF PUBlix STORES, INC. AND IS NOT TO BE REPRODUCED OR TRANSMITTED IN ANY FORM OR BY ANY MEANS, ELECTRONIC OR MECHANICAL, INCLUDING PHOTOCOPYING, RECORDING, OR BY ANY INFORMATION STORAGE AND RETRIEVAL SYSTEM. THE USER AGREES TO HOLD PUBlix STORES, INC. HARMLESS FROM ANY AND ALL LIABILITY ARISING FROM THE USE OF THIS DOCUMENT.

THE USER AGREES TO HOLD PUBlix STORES, INC. HARMLESS FROM ANY AND ALL LIABILITY ARISING FROM THE USE OF THIS DOCUMENT.

DATE: 25 AUG 2017

REVISION DATA:

1637
PUBLIX @ LAKE CROSSING
PLATT SPRINGS RD & HWY 6
LEXINGTON, LEXINGTON, SC

45.92
10/17/2017
SIENNA - LITE

CASE CONTROLLER SCHEDULES & DETAILS (REFRIGERATED CASES)

NOT TO SCALE

R-5.1