

TYPICAL CONNECTION SYMBOLOLOGY

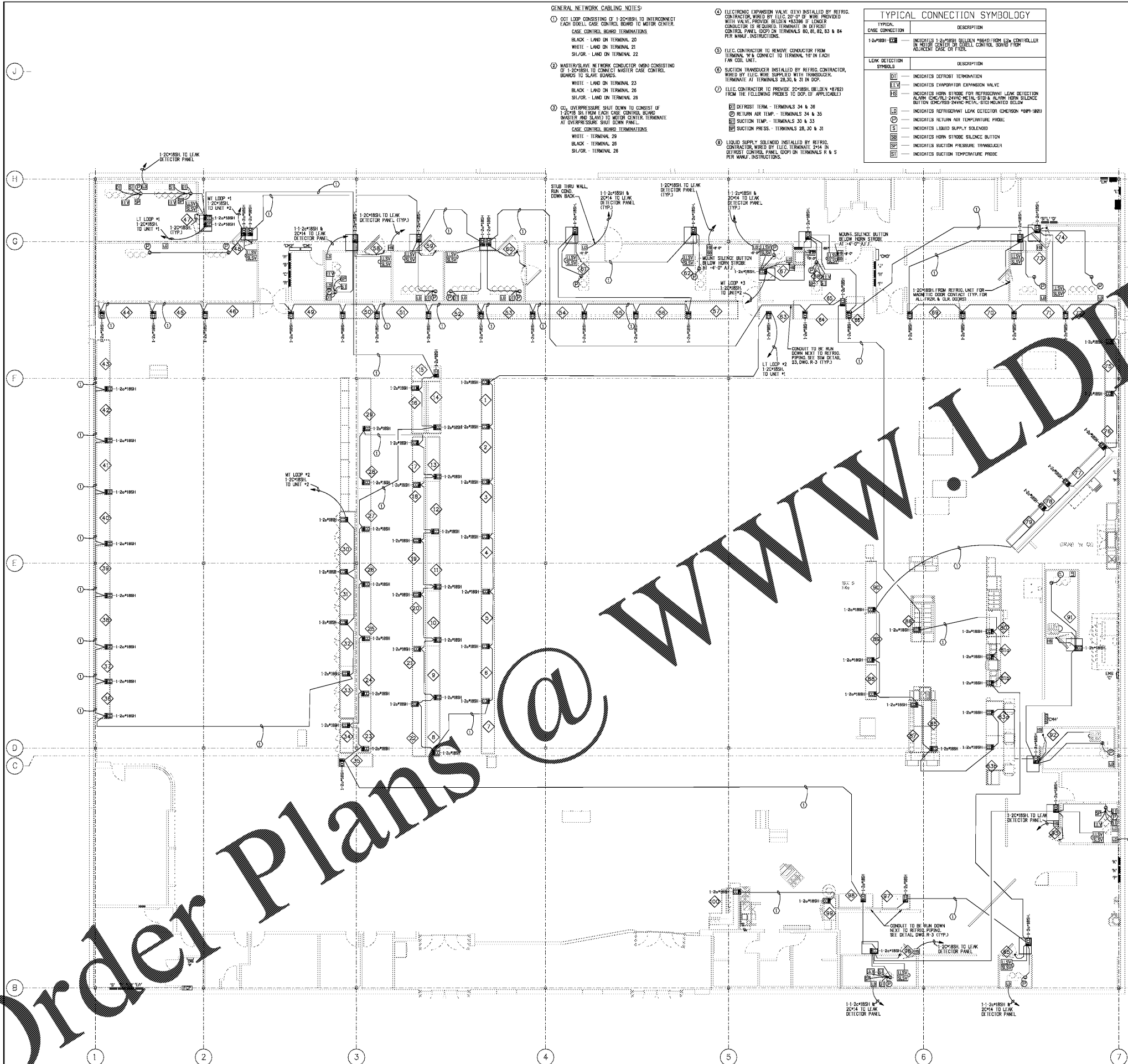
SYMBOL	DESCRIPTION
1-2u/1881	INDICATES 1-2u/1881 BELLWELL FROM FROM LOW VOLTAGE CONTROLLER IN MOTOR CENTER OF CASE CONTROL BOARD FROM REFRIGERATION CASE OR FUEL.
1-2u/1881	INDICATES DEFROST TERMINATION
1-2u/1881	INDICATES EVAPORATOR EXPANSION VALVE
1-2u/1881	INDICATES HORN STROBE FOR REFRIGERATION LEAK DETECTION ALARM (CIRCUITS 24VAC, METAL, STEEL & ALUMINUM SILENCE BUTION LOCATED IN THE FOLLOWING AREAS: 28, 30, & 31 IN DCP.
1-2u/1881	INDICATES REFRIGERATION LEAK DETECTOR (SENSORS #889-1802)
1-2u/1881	INDICATES RETURN AIR TEMPERATURE PROBE
1-2u/1881	INDICATES LIQUID SUPPLY SOLENOID
1-2u/1881	INDICATES HORN STROBE SILENCE BUTION
1-2u/1881	INDICATES SUCTION PRESSURE TRANSDUCER
1-2u/1881	INDICATES SUCTION TEMPERATURE PROBE

GENERAL NETWORK CABLING NOTES:

- COIL LOOP CONSISTING OF 1-20#1881 TO INTERCONNECT EACH CASE CONTROL BOARD TO MOTOR CENTER. CASE CONTROL BOARD TERMINATIONS:
BLACK - LAND ON TERMINAL 20
WHITE - LAND ON TERMINAL 21
SLUR/ - LAND ON TERMINAL 22
- MASTER/SLAVE NETWORK CONDUCTOR (MNS) CONSISTING OF 1-20#1881 TO CONNECT MASTER CASE CONTROL BOARD TO SLAVE SENSORS.
WHITE - LAND ON TERMINAL 23
BLACK - LAND ON TERMINAL 26
SLUR/ - LAND ON TERMINAL 28
- OVERPRESSURE SHUT DOWN TO CONSIST OF 1-20#1881 ON EACH CASE CONTROL BOARD (MASTER AND SLAVE) TO MOTOR CENTER. TERMINATE AT OVERPRESSURE SHUT DOWN PANEL.
CASE CONTROL BOARD TERMINATIONS:
WHITE - TERMINAL 29
BLACK - TERMINAL 26
SLUR/ - TERMINAL 28
- ELECTRONIC EXPANSION VALVE (EEV) INSTALLED BY REFRIG. CONTRACTOR. WIRE BY ELEC. 20#1881 TO WIRE PROVIDED WITH VALVE. PROVIDE BELDEN #889 IF LONGER CONDUCTOR IS REQUIRED. TERMINATE IN DEFROST CONTROL PANEL. LOOP IN TERMINALS 80, 81, 82, 83 & 84 PER MANUFACTURER'S INSTRUCTIONS.
- ELEC. CONTRACTOR TO REMOVE CONDUCTOR FROM TERMINAL 18 & CONNECT TO TERMINAL 19 IN EACH FAN COIL UNIT.
- SUCTION TRANSDUCER INSTALLED BY REFRIG. CONTRACTOR. WIRE BY ELEC. WIRE SUPPLIED WITH TRANSDUCER. TERMINATE AT TERMINALS 28, 30, & 31 IN DCP.
- ELEC. CONTRACTOR TO PROVIDE 20#1881 (BELDEN #889) FROM THE FOLLOWING PROBES TO DCP. IF APPLICABLE:
DEFROST TERM - TERMINALS 34 & 36
RETURN AIR TEMP - TERMINALS 34 & 36
SUCTION TEMP. - TERMINALS 30 & 33
SUCTION PRESS. - TERMINALS 28, 30 & 31
- LIQUID SUPPLY SOLENOID INSTALLED BY REFRIG. CONTRACTOR. WIRE BY ELEC. TERMINATE 2#18 IN DEFROST CONTROL PANEL. LOOP IN TERMINALS R & S PER MANUFACTURER'S INSTRUCTIONS.

REFRIGERATION NOTES

- ALL BRANCH CIRCUITS, PROBES, DEFROST TERMINATION CONDUCTORS ARE TO BE RUN IN THE TRAC WAY OF SYSTEMS (A, B, C, D, E, F, G, H, I, J, K, L, M, N, O, P, Q, R, S, T, U, V, W, X, Y, Z).
- ALL BRANCH CIRCUITS, PROBES AND DEFROST TERMINATION OF ALL REMAINING CASES TO BE CONNECTED TO THE ELECTRICAL JUNCTION BOX OF THE CASE.
- ALL BRANCH CIRCUITS, PROBES AND DEFROST TERMINATION FOR CO2 AND CO2 CASES ARE TO BE CONNECTED TO THE CONDUIT SYSTEM ON TOP OF CASES.
- ALL WALK-IN FREEZERS TO HAVE SOLENOID VALVE INSTALLED BY REFRIGERATION CONTRACTOR AND WIRE BY ELECTRICAL CONTRACTOR.
- ALL WALK-IN FREEZERS AND COOLERS TO HAVE A SEER SWITCH MOUNTED INTO COIL SWITCHES ARE TO BE PROVIDED AND INSTALLED BY REFRIGERATION CONTRACTOR. WIRE BY ELECTRICAL CONTRACTOR. COORDINATE WITH PUBlix REPRESENTATIVE FOR WIRING. ALSO SEE DETAIL ON THIS DRAWING.
- PROVIDE 1-20#1881 FROM EACH PROBE AND 1-20#1881 FROM EACH DEFROST TERMINATION TERMINAL IN CASE (DOWN AS SHOWN) TO RESPECTIVE REFRIG. UNIT CONTROL CABINET. THESE CONDUCTORS CAN BE GROUPED TOGETHER, DO NOT CUT OR SPICE CONDUCTORS. CLEARLY IDENTIFY BOTH ENDS OF CONDUCTORS BY SYSTEM NUMBER.
- ALL APPROVED SWELED CABLE SUPPLIED AND INSTALLED BY CONTRACTOR.
- ALL CASES SHALL HAVE CONDUCTORS IN A FLEXIBLE CONDUIT FROM CASE TO CONDUIT AS ON TOP OF THE CASE.
- ON ALL MULTI-CASE SYSTEMS THE DEFROST TERMINATION (DT) ARE TO BE WIRED IN SERIES USING #12 CONDUCTORS OF THE 40#1881.
- IN ALL WALK-IN COOLERS AND FREEZERS PROVIDE A HUBBELL RECEPTACLE, MALE PLUG, BUT WEATHERPROOF COVER PLATE, AND COIL FOR EACH COIL AS SHOWN ON THE DRAWING. SEE SYMBOL SCHEDULE ON DWG. FOR COMPLETE DEVICE ASSEMBLY.
- WIRING TO REFRIGERATED CASES, WALK-IN COOLERS, AND FREEZERS SHALL BE TYPE FAN STRANDED COPPER WIRES AS INDICATED.
- CONDUCTORS FOR SINGLE SOLENOID VALVE STATIONS SHALL BE BLENDED SMOKE CO2H4 AND WIRE BY ELECTRICAL CONTRACTOR. ELECTRICAL CONTRACTOR TO VERIFY LOCATION OF J-BOX BEHIND COILS TOP SIDE OF COOLERS.
- NOT USED
- CONTRACTOR TO INSTALL ONE (1) #12 GREEN CONDUCTOR TO EACH LINE OF CASES, FREEZERS AND COOLERS FOR GROUNDING.
- CONTRACTOR TO MAKE ALL ELEVATION AND CONNECTIONS WITH THE SILENT APPROPRIATE LENGTHS AND CONNECTIONS TO THE COOLERS (A.C.).
- PROVIDE KEY TYPE SWITCHES TO CONTROL AND SEPARATE COOLERS (A.C.).
- ALL HOOD TOP REFRIGERATION EQUIPPED WITH REFRIGERATION SWITCHES.
- ELEC. CONTRACTOR TO CALL EACH HOOD SHOWING THE PANELS AND CIRCUIT NUMBER. THE CASES WILL BE SHOWN BY HULL MARKED AND INSTALLED BY CONTRACTOR.
- PENETRATIONS THROUGH CEILING, FLOORS, WALLS AND CEILING SHALL BE SLEEVED WITH THREADED SCHEDULE 40 AND PROPERLY GASKETED. ALL RAZEMATS AND SLEEVES SHALL BE FILLED WITH ENFORCED SEALANT. USE LOW SEALANT BY DOW PER MFG. 300.710.
- ALL PENETRATIONS THROUGH PARTITIONS TO BE COMPLETED IN ACCORDANCE WITH ALL APPLICABLE CODES.
- ALL LOW VOLTAGE WIRING FROM ALL REFRIG. CASES, WALK-IN COOLERS AND FREEZERS MUST BE SLEEVED IN CONDUIT UP TO ELEV. 800.
- ALL MULTIPLE CONDUCTORS IN CONDUIT HAVE BEEN DERATED AS PER 2001 N.E.C. TABLE 310.15(B). ANY DEVIATION BY CONTRACTOR MUST REMAIN IN ACCORDANCE WITH ALL APPLICABLE CODES.
- ELECTRICAL CONTRACTOR TO INCLUDE EQUIPMENT GROUNDING CONDUCTOR IN ALL CONDUITS CONTAINING POWER CIRCUITS (E.G. FAN LIGHT, HEAT) IN ADDITION TO WIRE QUANTITIES SHOWN.
- INSTALL EXPOSED CABLES PARALLEL AND PERPENDICULAR TO SURFACES OR EXPOSED STRUCTURAL MEMBERS AND FOLLOW SURFACE CONDUITS WHERE POSSIBLE.
- MAKE SPLICES, TAPS, AND TERMINATION ONLY AT INDICATED DOWELS, TERMINALS AND STRIPS.
- SECURE AND SUPPORT EXPOSED CABLES AT INTERVALS NOT EXCEEDING 30" AND NOT MORE THAN 6" FROM CABLES, BOXES, FITTINGS AND TERMINALS.
- CONTRACTOR SHALL FREE WIRE LOW VOLTAGE CABLES ONLY UPON COMPLETION OF PAINTING IN THE INSTALLATION AREA.
- ELECTRICAL CONTRACTOR SHALL LABEL EACH END OF ALL LOW VOLTAGE CONDUCTORS INSTALLED BY ELECTRICAL CONTRACTOR INCLUDING CONDUCTORS TERMINATED BY OTHERS.
- ALL CONTROL CONDUCTORS RUN ON TOP OF CASES, COOLERS AND FREEZERS SHALL BE IN CONDUIT (ELEV. CONDUIT TO BE 24" MAX).
- NO LOW VOLTAGE CONDUCTORS, CABLES, WIRES, ETC. PERMITTED TO BE INSTALLED BETWEEN TOP OF JUST AND ROOF DECK.



Order Plans @