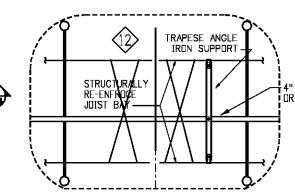
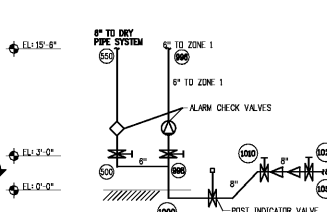


1 MECHANICAL CENTER FIRE PROTECTION  
SCALE: 1/8" = 1'-0"



2 TRAPEZE SUPPORTS  
SCALE: NTS



3 RISER ELEVATION WITH NODES  
SCALE: NTS

- DRAWING NOTES**
- UPRIGHT SPRINKLER HEAD 12" MAX. 1" MIN FROM UNDER SIDE OF ROOF DECK.
  - UPRIGHT SPRINKLER HEAD LOCATED IN JOIST SPACE ABOVE AREA WITH CEILING MOUNTED SPRINKLER HEADS.
  - WALL EXTENDS TO UNDERSIDE OF JOISTS, SEE DRAWING A-4 FOR MORE DETAIL.
  - WALL EXTENDS TO UNDER SIDE OF ROOF DECK, SEE DRAWING A-4 FOR MORE DETAIL.
  - CHANGES TO FRONT CANOPY MAY REQUIRE MODIFICATION OF CANOPY SPRINKLER DESIGN.
  - ROUTE PIPING UNDER IDENTIFIED I-BEAM AS NECESSARY.
  - SEISMIC RESTRAINTS WHERE REQUIRED.
  - TRANSVERSE BRACING - 2 OPPOSING 1/2" CABLES
  - LONGITUDINAL BRACING - 2 OPPOSING 1/2" CABLES
  - VALVEWAY BRACE AT THE TOP OF THE RISER, PROVIDE WITH FLEXIBLE COUPLERS AT THE TOP AND BASE OF THE RISER.
  - PROVIDE DRAIN VALVES AT TRAPPED SECTIONS OF PIPE.
  - PROVIDE SPRINKLER HEAD PROTECTION BELOW ALL REFRIGERANT PIPE OCCUPANCIES AND HVAC DUCT GREATER THAN 48 INCHES WIDE.
  - DRY PIPE SPRINKLER SYSTEM REQUIRED NORTH OF INTERSTATE 4.
  - SEE M-1 AND M-3 FOR ROOM HEATING REQUIREMENTS.
  - HEATER FURNISHED AND INSTALLED BY MECHANICAL CONTRACTOR.
  - 8" MAIN & 4" CROSSMAIN SHALL BE POSITIONED BETWEEN THE STRUCTURALLY REINFORCED JOIST BAY. SEE STRUCTURAL DRAWING S-4 FOR REINFORCED JOIST BAY LOCATION. PIPING SHALL BE TRAPED & SUPPORTED THIS BAY. NO EXCEPTIONS (SEE DETAIL 47 SHI, FP-3).
  - SPRINKLER BELOW 40°C AND REFRIGERATION EQUIPMENT SHALL EXTEND UP INTO THE CURB TO WITHIN 12" OF THE EQUIPMENT CASING IN BETWEEN THE CURB AND SUPPORT BEAM.
  - WHEN A RISER ROOM IS USED - PROVIDE WALKING SURFACE WORK IN BUILDING RISER TO CONNECT THE EXTERIOR FIRE MAIN TO THE FIRE RISER INSIDE THE RISER ROOM.
  - SEE SITE SPECIFIC DOCUMENT FOR DRY RISE CANOPY FIRE PROTECTION SPRINKLER LAYOUT. SEE NOTES 2.5.1.1.3 AND PM-8, PM-7 FOR CANOPY SPRINKLER SYSTEM DESIGN REQUIREMENTS AND SPECIFICATIONS. SUPERMARKETS SOUTH OF FLORIDA SP-40 SHALL RELY ON WET PIPE SPRINKLER SYSTEMS. SUPERMARKETS NORTH OF FLORIDA SP-40 SHALL RELY ON DRY PIPE SPRINKLER SYSTEMS.
  - REFER TO WALL PENETRATION DETAIL DESIGN NO. C-A-1081 ON SHEET A-1.

**DESIGN DATA**

SALES AREA	STORAGE/RECEIVING
2800 SQ. FT. - 20 HDS	2000 SQ. FT. - 20 HDS
125 SQ. FT./H.D.	100 SQ. FT./H.D.

1.4 #/2000 - 7 HEADS/BRANCH  
1.4 #/2000 - 7 HEADS/BRANCH

**LEGEND:**

	WALLS/SEFIT TO THE ROOF DECK
	WALLS/SEFIT TO THE UNDERSIDE OF THE ROOF JOIST
	WALLS 6" ABOVE CEILING
	COOLER WALL

NOTE: ALL O.P.R. BOARD TO RUN 6" ABOVE ADJACENT CEILING

**NORMAL CALCULATION - STORAGE/RECEIVING**  
DESIGN FLOW DENSITY - 2.50 GPM/SQ. FT.  
DESIGN SPRINKLER HEAD  
AREA OF COVERING - 100 SQ. FT./HEAD  
DESIGN AREA - 2007 SQ. FT.  
FLOW - 485 GPM - 2500 GPM  
RESIDUAL PRESSURE - 24.4 PSI

**NORMAL CALCULATION - SALES AREA**  
DESIGN FLOW DENSITY - 2.50 GPM/SQ. FT.  
DESIGN SPRINKLER HEAD  
AREA OF COVERING - 100 SQ. FT./HEAD  
DESIGN AREA - 2800 SQ. FT.  
FLOW - 700 GPM - 7000 GPM  
RESIDUAL PRESSURE - 28 PSI

Order Plans @ [www.ldline.com](http://www.ldline.com)