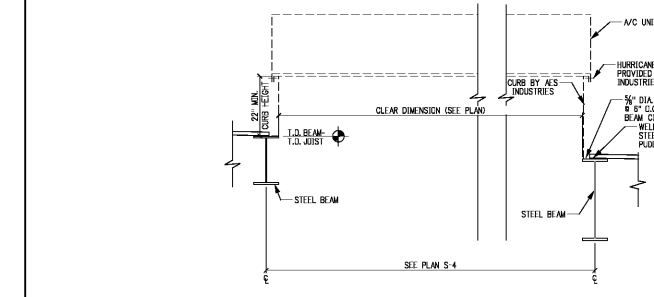
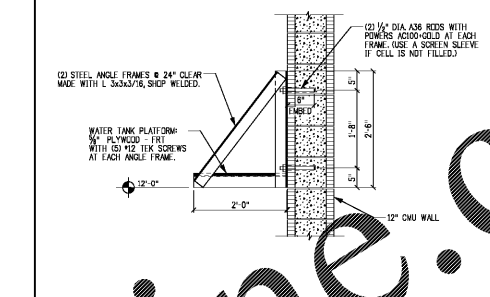


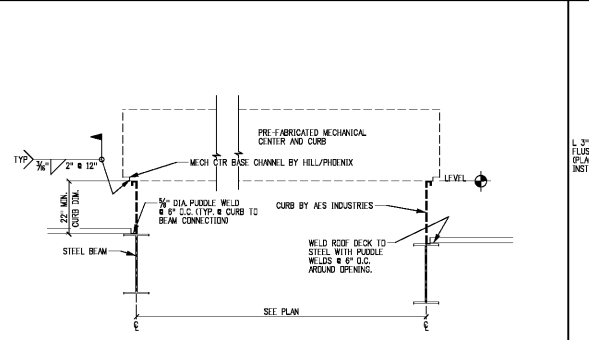
1 SECTION AT AC UNIT
S-6 SCALE: 3/4"=1'-0"



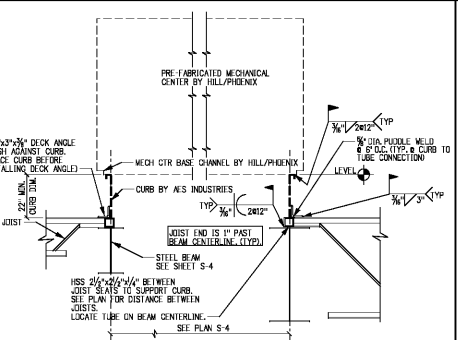
2 SECTION AT AC UNIT
S-6 SCALE: 3/4"=1'-0"



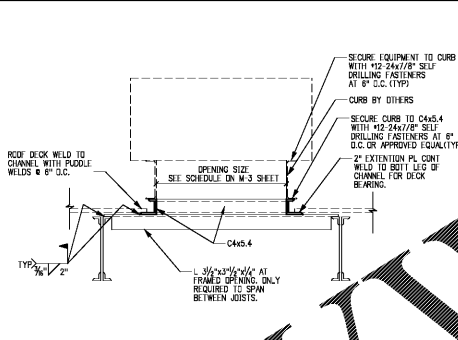
4 SECTION FOR WATER TANK
S-6 SCALE: 3/4"=1'-0"



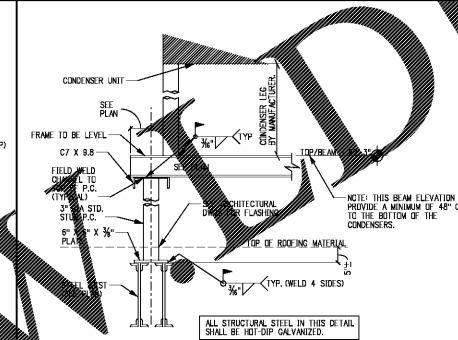
5 SECTION AT MECHANICAL CENTER
S-6 SCALE: 3/4"=1'-0"



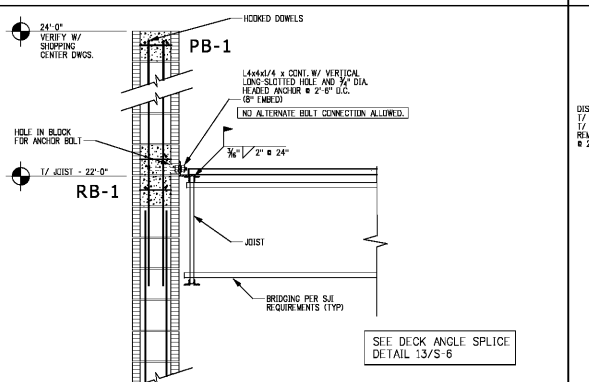
6 SECTION AT MECHANICAL CENTER
S-6 SCALE: 3/4"=1'-0"



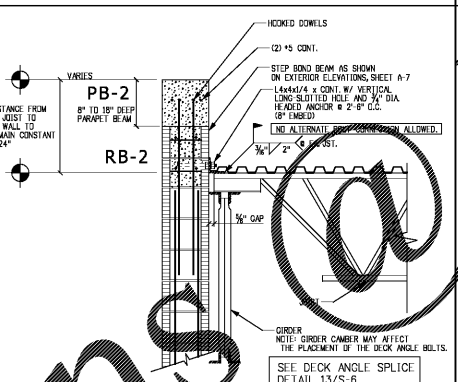
7 ROOF OPENING DETAIL FOR RISERS AND RISERS
S-6 SCALE: 3/4"=1'-0"



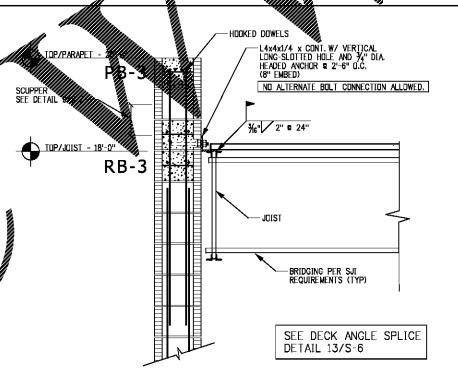
8 SECTION AT BENCH
S-6 SCALE: 3/4"=1'-0"



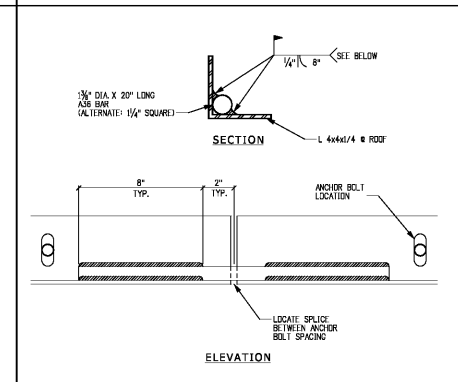
10 SECTION AT FRONT
S-6 SCALE: 3/4"=1'-0"



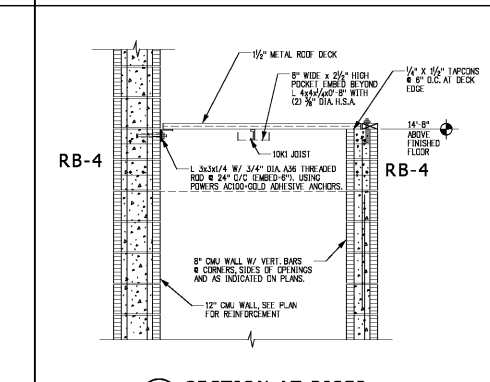
11 SECTION AT SIDES
S-6 SCALE: 3/4"=1'-0"



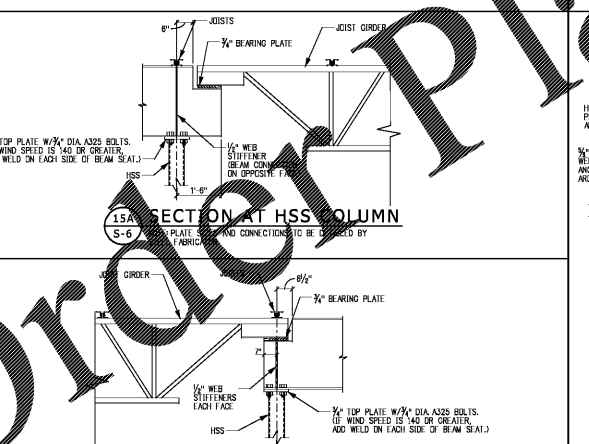
12 SECTION AT REAR
S-6 SCALE: 3/4"=1'-0"



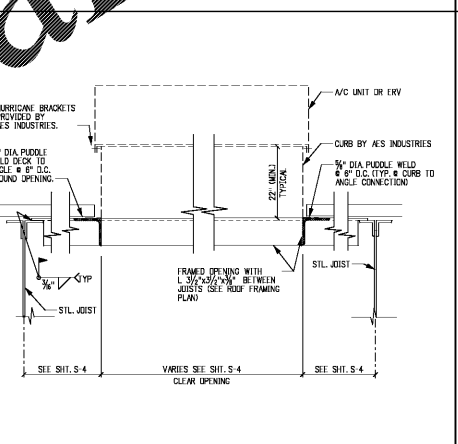
13 ROOF DECK ANGLE SPLICE
S-6 SCALE: 3"=1'-0"



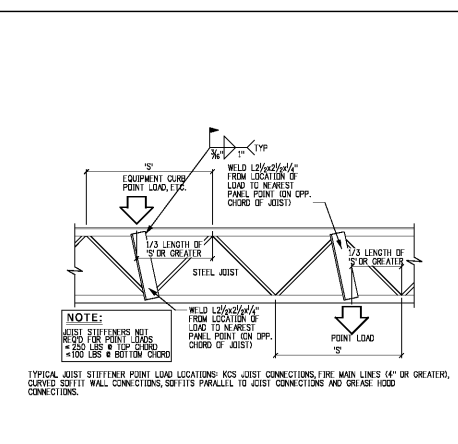
14 SECTION AT RISER
S-6 SCALE: 1/2"=1'-0"



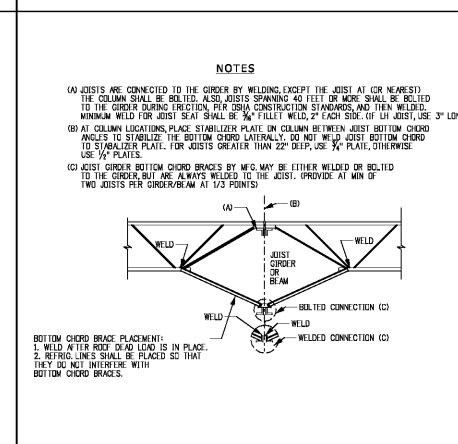
15 SECTION AT HSS COLUMN
S-6 SCALE: 3/4"=1'-0"



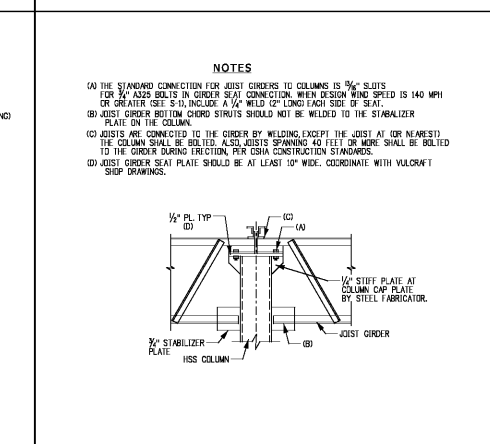
16 SECTION AT AC UNIT
S-6 SCALE: 1 1/2"=1'-0"



17 TYP JOIST STIFFENER DETAIL
S-6 SCALE: NONE (WHERE POINT LOADS OCCUR BETWEEN JOIST PANEL POINTS)



18 JOIST TO GIRDER DETAIL
S-6 SCALE: 3/4"=1'-0"



19 GIRDER TO COLUMN DETAIL
S-6 SCALE: 3/4"=1'-0"

NOTES

(A) JOISTS ARE CONNECTED TO THE GIRDERS BY WELDING, EXCEPT THE JOIST AT (OR NEAREST) THE COLUMN SHALL BE BOLTED. ALSO, JOISTS SPANNING 40 FEET OR MORE SHALL BE BOLTED TO THE GIRDERS BEARING IN THE GIRDERS CONSTRUCTION STANDARDS, AND THEN WELDED TO STABILIZER PLATE. FOR JOISTS GREATER THAN 22" DEEP, USE 3/4" PLATE, OTHERWISE USE 1/2" PLATE.

(B) JOISTS GREATER THAN 22" DEEP, USE 3/4" PLATE, OTHERWISE USE 1/2" PLATE.

(C) JOIST GIRDERS BOTTOM CHORD BRACES BY WELDING, EXCEPT THE JOIST AT (OR NEAREST) THE COLUMN SHALL BE BOLTED. ALSO, JOISTS SPANNING 40 FEET OR MORE SHALL BE BOLTED TO THE GIRDERS BEARING IN THE GIRDERS CONSTRUCTION STANDARDS.

(D) JOIST GIRDERS SEAT PLATE SHOULD BE AT LEAST 10" WIDE. COORDINATE WITH VALORCIT SHEET DRAWINGS.

NOTES

(A) THE STANDARD CONNECTION FOR JOIST GIRDERS TO COLUMNS IS 3/4" SLITS FOR 3/4" A325 BOLTS IN GIRDER SEAT CONNECTION. WHEN DESIGN WIND SPEED IS 140 MPH OR GREATER, SEE S-6, INCLUDE 1/2" WELD 12" LONG EACH SIDE OF SEAT.

(B) JOIST GIRDERS BOTTOM CHORD STRUTS SHOULD NOT BE WELDED TO THE STABILIZER PLATE.

(C) JOISTS ARE CONNECTED TO THE GIRDERS BY WELDING, EXCEPT THE JOIST AT (OR NEAREST) THE COLUMN SHALL BE BOLTED. ALSO, JOISTS SPANNING 40 FEET OR MORE SHALL BE BOLTED TO THE GIRDERS BEARING IN THE GIRDERS CONSTRUCTION STANDARDS.

(D) JOIST GIRDERS SEAT PLATE SHOULD BE AT LEAST 10" WIDE. COORDINATE WITH VALORCIT SHEET DRAWINGS.

PLOT DATE:
25 AUG 2017

REVISION DATA:

1637
PUBlix LAKE CROSSING
PLATT SPRINGS RD & HWY 6
LEXINGTON, LEXINGTON, SC

45.9.2
08/17/2017

SIENNA-LITE

SECTIONS & DETAILS

SCALE: AS NOTED

S-6

Order Plans