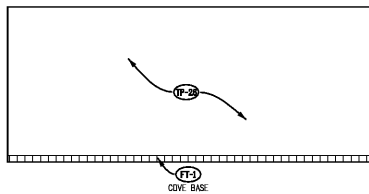
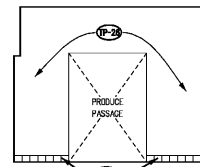


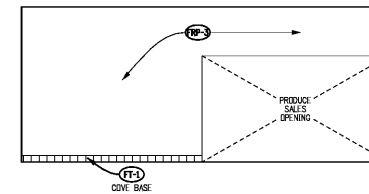
1 ENLARGED PRODUCE PLAN  
A-14 SCALE: 1/4" = 1'-0"



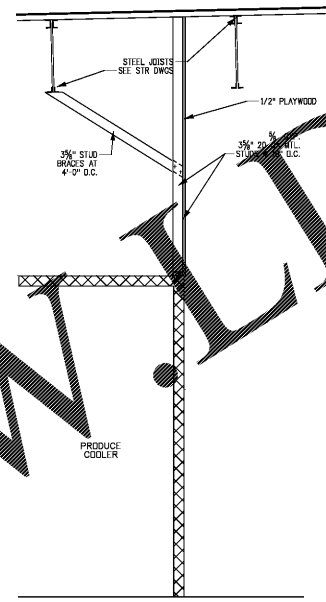
A PRODUCE ELEVATION  
A-14 SCALE: 1/4" = 1'-0"



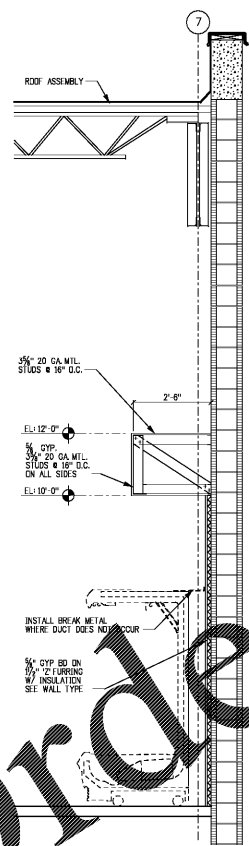
B PRODUCE ELEVATION  
A-14 SCALE: 1/4" = 1'-0"



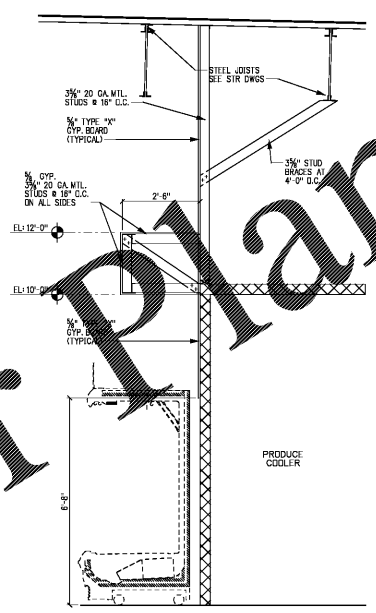
C PRODUCE ELEVATION  
A-14 SCALE: 1/4" = 1'-0"



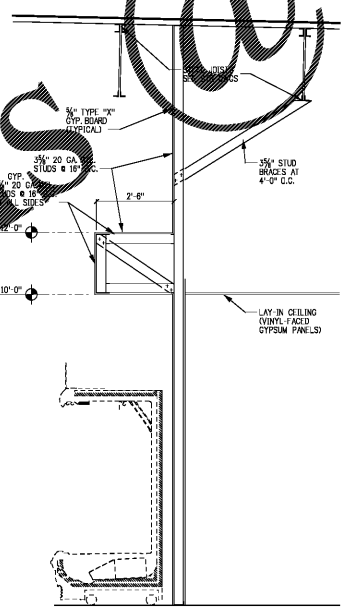
2 BACK WALL SECTION AT PRODUCE COOLER  
A-14 SCALE: 1/2" = 1'-0"



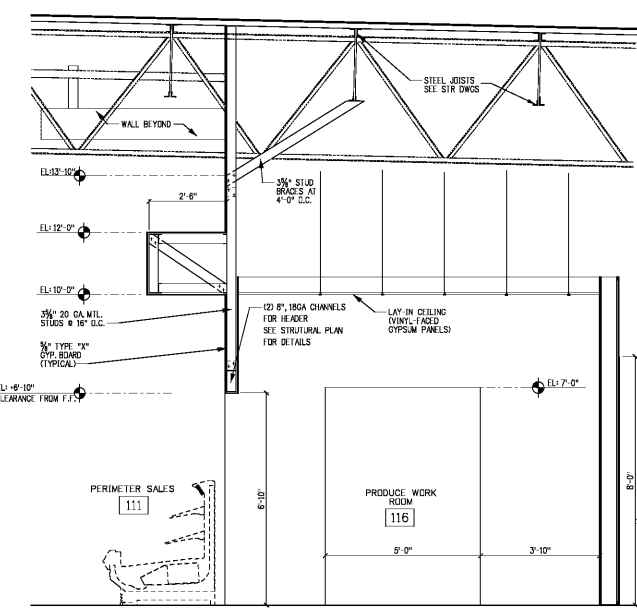
3 WALL SECTION AT PRODUCE  
A-14 SCALE: 1/2" = 1'-0"



4 WALL SECTION AT PRODUCE COOLER  
A-14 SCALE: 1/2" = 1'-0"



5 WALL SECTION AT PRODUCE  
A-14 SCALE: 1/2" = 1'-0"



6 WALL SECTION AT PRODUCE WORK ROOM  
A-14 SCALE: 1/2" = 1'-0"

**FINISHES & COLORS LEGEND (SIENNA & SIENNA LITE)**

(P1) INTERIOR PAINT	(P2) COOLER WALL/FREEZER PANEL FINISH
(P3) SHERWIN WILLIAMS SW 8022 PORTABELLO	(P4) COOLER WALL/FREEZER PANEL - BRUSHED ALUMINUM FINISH
(P4) SHERWIN WILLIAMS SW 0042 RUSSET FROM GREEN	(P5) COOLER WALL/FREEZER PANEL - STAINLESS STEEL FINISH
(P5) (NOT USED)	(P6) COOLER WALL/FREEZER PANEL - WHITE FINISH
(P6) SHERWIN WILLIAMS SW 8019 ANTIQUE WHITE	(P7) COOLER WALL/FREEZER PANEL - EXISTING TO REMAIN
(P7) SHERWIN WILLIAMS SW 8874 JONQUIL	
(P8) SHERWIN WILLIAMS SW 8516 DOWN POUR	
(P9) (NOT USED)	
(P10) SHERWIN WILLIAMS SW 6420 LEAF FROG	
(P11) (NOT USED)	
(P12) SHERWIN WILLIAMS SW 6716 DANCING GREEN	
(P13) SHERWIN WILLIAMS SW 8228 REFUGE	
(P14) SHERWIN WILLIAMS SW 8206 OYSTER BAY	
(P15) SHERWIN WILLIAMS SW 8320 RED BAY	
(P16) SHERWIN WILLIAMS SW 7069 IRON ORE	
(P17) SHERWIN WILLIAMS SW 8018 TATAMI TAN	
(P18) (NOT USED)	
(P19) SHERWIN WILLIAMS SW 6307 FINE WINE	
(P20) SHERWIN WILLIAMS SW 6340 BAYED CLAY	
(P21) SHERWIN WILLIAMS SW 6835 SAFETY RED	
(P22) SHERWIN WILLIAMS ALKYO PRIMER	
(P23) SHERWIN WILLIAMS SW 6254 LAZY GRAY	
(P24) SHERWIN WILLIAMS SW 7005 EXTRA WHITE	
(P25) (NOT USED)	
(P26) SHERWIN WILLIAMS SW 0001 CROWN TAN	
(P27) (NOT USED)	
(P28) (NOT USED)	
(P29) SHERWIN WILLIAMS SW 8515 LEISURE BLUE	
(P30) SHERWIN WILLIAMS SW 8207 BLISSFUL BLUE	
(P31) MATCH EXISTING ADJACENT COLOR	
(P32) EXISTING PAINT COLOR TO REMAIN	
(P33) (NOT USED)	
(P34) PLASTIC LAMINATE	
(P35) (NOT USED)	
(P36) (NOT USED)	
(P37) WILSONART ALUMINUM 6277 TYPE 418	
(P38) WILSONART *7939K-18 "BLOND ECHO"	
(P39) WILSONART *7951K-18 "ASIAN SUN"	
(P40) (NOT USED)	
(P41) WILSONART *7209K-78 "NEPA TEAK"	
(P42) WILSONART *4673-80 "SAFIRON TORIS"	
(P43) WILSONART *4912-38 "GOLDEN MERIT"	
(P44) WILSONART *4588-07 "KALAWARI TOPAZ"	
(P45) WILSONART *7209K-18 "ALICE"	
(P46) WILSONART "BRUSHED ALUMINUM" EDGE BANDING	
(P47) NEW PLASTIC LAMINATE TO MATCH EXISTING	
(P48) EXISTING PLASTIC LAMINATE TO REMAIN	
(P49) (NOT USED)	
(P50) (NOT USED)	
(P51) (NOT USED)	
(P52) (NOT USED)	
(P53) (NOT USED)	
(P54) (NOT USED)	
(P55) (NOT USED)	
(P56) (NOT USED)	
(P57) (NOT USED)	
(P58) (NOT USED)	
(P59) (NOT USED)	
(P60) (NOT USED)	
(P61) (NOT USED)	
(P62) (NOT USED)	
(P63) (NOT USED)	
(P64) (NOT USED)	
(P65) (NOT USED)	
(P66) (NOT USED)	
(P67) (NOT USED)	
(P68) (NOT USED)	
(P69) (NOT USED)	
(P70) (NOT USED)	
(P71) (NOT USED)	
(P72) (NOT USED)	
(P73) (NOT USED)	
(P74) (NOT USED)	
(P75) (NOT USED)	
(P76) (NOT USED)	
(P77) (NOT USED)	
(P78) (NOT USED)	
(P79) (NOT USED)	
(P80) (NOT USED)	
(P81) (NOT USED)	
(P82) (NOT USED)	
(P83) (NOT USED)	
(P84) (NOT USED)	
(P85) (NOT USED)	
(P86) (NOT USED)	
(P87) (NOT USED)	
(P88) (NOT USED)	
(P89) (NOT USED)	
(P90) (NOT USED)	
(P91) (NOT USED)	
(P92) (NOT USED)	
(P93) (NOT USED)	
(P94) (NOT USED)	
(P95) (NOT USED)	
(P96) (NOT USED)	
(P97) (NOT USED)	
(P98) (NOT USED)	
(P99) (NOT USED)	
(P100) (NOT USED)	

**NOTES:**

- NOT ALL COLORS OR FINISHES MAY BE USED ON THIS PROJECT.
- FOR FLOOR FINISHES, SEE SHEET A-14.
- INTERIOR PAINTS FOR SALES AREA WALL SURFACES ABOVE 8' ARE TO BE "FLAT FINISH". ALL OTHER SURFACES TO BE SEMI-GLOSS SATIN FINISH.
- APPLY BLOCK FILLER TO ALL MASONRY TO RECEIVE PAINT.
- ALL SURFACES BEHIND CASES WALK-IN COOLERS OR FREEZERS SHALL USE 1/2" SHEET POLYURETHANE OR BLOCK FILLER. ALL EXPOSED SURFACES ABOVE THE CASES WALK-IN COOLERS OR FREEZERS SHALL ALSO RECEIVE THE FINISH CALL OF PAINT.
- IN RECEIVING/STORAGE AREA, 2" WIDE OF SW 6893B SAFETY RED SHALL BE PAINTED AT A HEIGHT OF 12'-0" (TOP OF LINE) ON WALLS WHERE STORAGE OCCURS. THIS LINE WILL BE STENCILLED, IN 3" CAPITAL LETTERS, "NO STORAGE ABOVE THIS LINE."
- PAINT ALL EXPOSED UTILITY DEVICES, SUCH AS PLUMBING LINES, REFRIGERATION LINES, ELECTRICAL CONDUIT, DUCTS AND COLUMNS, TO MATCH ADJACENT WALL SURFACE, WHEN MORE THAN ONE COLOR IS USED ON WALL, MATCH COLOR CHANGES AT EXACT SAME HEIGHTS.

**NOTE:**  
ALL GAS PIPING TO BE PAINTED SAFETY YELLOW

CORPORATE OFFICES, FACILITIES DESIGN  
404 4TH LAKELAND, FL 33602  
888.888.8888  
PHYSICAL ADDRESS: 3300 FARMER CORPORA...  
LAKELAND, FL 33811-1211

**PUBLIC FACILITIES DESIGN DEPARTMENT**

DAVID...  
ARCHITECT...  
FL REG. 12111  
AL REG. 12111  
NC REG. 12111  
VA REG. 12111

JOHN...  
STRUCTURAL...  
FL REG. 12111  
AL REG. 12111  
NC REG. 12111  
VA REG. 12111

PAUL C. HARMAN, PE  
STRUCTURAL...  
FL REG. 12111  
AL REG. 12111  
NC REG. 12111  
VA REG. 12111

JOHN J. CARAMALIS, PE  
MECHANICAL...  
FL REG. 12111  
AL REG. 12111  
NC REG. 12111  
VA REG. 12111

ANTHONY CLEMENTI, PE  
MECHANICAL...  
FL REG. 12111  
AL REG. 12111  
NC REG. 12111  
VA REG. 12111

RAYMOND J. SIRIANNI, PE  
ELECTRICAL...  
FL REG. 12111  
AL REG. 12111  
NC REG. 12111  
VA REG. 12111

NORMAN MEIER, PE  
ELECTRICAL...  
FL REG. 12111  
AL REG. 12111  
NC REG. 12111  
VA REG. 12111

© COPYRIGHT 2017  
THE PUBlix STORES, INC.

THESE CONSTRUCTION DOCUMENTS ARE THE PROPERTY OF PUBlix STORES, INC. AND ARE NOT TO BE COPIED OR REPRODUCED IN ANY MANNER WITHOUT THE WRITTEN PERMISSION OF PUBlix STORES, INC. ANY UNAUTHORIZED REPRODUCTION OF THESE DOCUMENTS IS PROHIBITED.

THE DESIGN INDICATED IN THESE CONSTRUCTION DOCUMENTS SHALL BE THE BASIS OF ANY CONTRACT, SPECIFICATIONS AND BIDDING DOCUMENTS. CONTRACTORS SHALL BE RESPONSIBLE FOR VERIFYING ALL CONDITIONS AND CONDITIONS OF WORK.

DATE: 05/11/2017  
REVISION DATA:

1637  
PUBlix LAKE CROSSING  
PLANT SPRINGS RD & HWY 6  
LEXINGTON, KENTUCKY

45.92  
05/11/2017  
SIENNA - LITE

ENLARGED PRODUCE PLAN, ELEVATIONS AND SECTIONS

SCALE: 1/8" = AS NOTED

A-14

WWW.WLDLine.com

Order Plans @