

PLOT DATE:
25 AUG 2017

REVISION DATA:

1637
PUBLIX @ LAKE CROSSING
PLATT SPRINGS RD & HWY 6
LEXINGTON, LEXINGTON, SC

45.9.2
10/27/2017
SIENNA - UTE

FLOOR PLAN

SCALE: 1/8" = 1'-0"

A-1

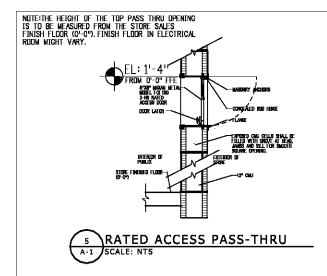
TRIM-OUT LEGEND:

SYMBOL	DESCRIPTION	MODEL	REMARKS
(10-00004)	2" MOULD CART STOP WITH HARDWARE PACKAGE	CSR-2A-111	TRIM AND ADJUSTMENTS AS NECESSARY
(10-00004)	4" MOULD CART STOP WITH HARDWARE PACKAGE	CSR-4A-111	TRIM AND ADJUSTMENTS AS NECESSARY
(10-00004)	6" MOULD CART STOP WITH HARDWARE PACKAGE	CSR-6A-111	TRIM AND ADJUSTMENTS AS NECESSARY
(10-00004)	8" MOULD CART STOP WITH HARDWARE PACKAGE	CSR-8A-111	TRIM AND ADJUSTMENTS AS NECESSARY
(10-00004)	10" MOULD CART STOP WITH HARDWARE PACKAGE	CSR-10A-111	TRIM AND ADJUSTMENTS AS NECESSARY
(10-00004)	12" MOULD CART STOP WITH HARDWARE PACKAGE	CSR-12A-111	TRIM AND ADJUSTMENTS AS NECESSARY
(10-00004)	32" MOULD CARTSTOP FULCRUM KIT	CRFP-3-32	INSTALL BY MANUFACTURER'S RECOMMENDATIONS
(10-00008)	LADDER HOEK		SEE HEIGHT & LOCATION TO BE FIELD DETERMINED

OPENING DESIGN PRESSURES (PSF)

OPENING MARK	DESIGN WIND SPEED
(1)	125 MPH
(2)	125 MPH
(3)	125 MPH
(4)	125 MPH
(5)	125 MPH
(6)	125 MPH
(7)	125 MPH
(8)	125 MPH
(9)	125 MPH
(10)	125 MPH
(11)	125 MPH
(12)	125 MPH
(13)	125 MPH
(14)	125 MPH
(15)	125 MPH
(16)	125 MPH
(17)	125 MPH
(18)	125 MPH
(19)	125 MPH
(20)	125 MPH
(21)	125 MPH
(22)	125 MPH
(23)	125 MPH
(24)	125 MPH
(25)	125 MPH
(26)	125 MPH
(27)	125 MPH
(28)	125 MPH
(29)	125 MPH
(30)	125 MPH
(31)	125 MPH
(32)	125 MPH
(33)	125 MPH
(34)	125 MPH
(35)	125 MPH
(36)	125 MPH
(37)	125 MPH
(38)	125 MPH
(39)	125 MPH
(40)	125 MPH
(41)	125 MPH
(42)	125 MPH
(43)	125 MPH
(44)	125 MPH
(45)	125 MPH
(46)	125 MPH
(47)	125 MPH
(48)	125 MPH
(49)	125 MPH
(50)	125 MPH
(51)	125 MPH
(52)	125 MPH
(53)	125 MPH
(54)	125 MPH
(55)	125 MPH
(56)	125 MPH
(57)	125 MPH
(58)	125 MPH
(59)	125 MPH
(60)	125 MPH
(61)	125 MPH
(62)	125 MPH
(63)	125 MPH
(64)	125 MPH
(65)	125 MPH
(66)	125 MPH
(67)	125 MPH
(68)	125 MPH
(69)	125 MPH
(70)	125 MPH
(71)	125 MPH
(72)	125 MPH
(73)	125 MPH
(74)	125 MPH
(75)	125 MPH
(76)	125 MPH
(77)	125 MPH
(78)	125 MPH
(79)	125 MPH
(80)	125 MPH
(81)	125 MPH
(82)	125 MPH
(83)	125 MPH
(84)	125 MPH
(85)	125 MPH
(86)	125 MPH
(87)	125 MPH
(88)	125 MPH
(89)	125 MPH
(90)	125 MPH
(91)	125 MPH
(92)	125 MPH
(93)	125 MPH
(94)	125 MPH
(95)	125 MPH
(96)	125 MPH
(97)	125 MPH
(98)	125 MPH
(99)	125 MPH
(100)	125 MPH

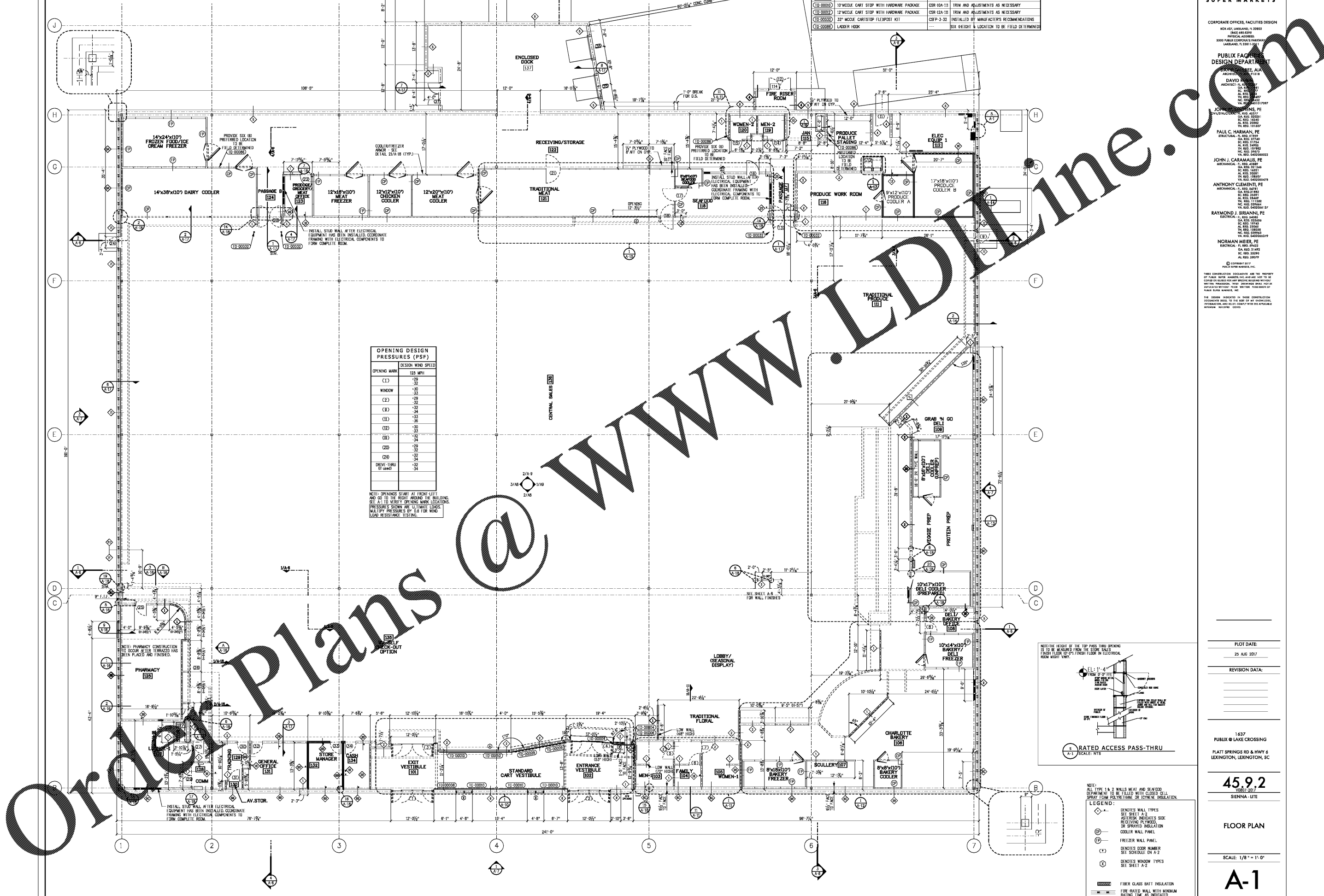
NOTE: OPENINGS START AT FRONT LEFT
AND GO TO THE RIGHT AROUND THE BUILDING.
SEE A-1 TO VERIFY OPENING MARK LOCATIONS.
PRESSURES SHOWN ARE ON CHILLER LINES.
MULTIPLY PRESSURES BY 0.8 FOR WIND
LOAD RESISTANCE TESTING.



NOTE:
ALL TYPE 1 & 2 WALLS MEAT AND SEAFOOD
DEPARTMENT TO BE FILLED WITH CLOSED CELL
SPRAY FOAM POLYURETHANE OR EQUIV. INSULATION.

LEGEND:

- ◊ DENOTES WALL TYPES SEE SHEET A-2
- * ASTERISK INDICATES SIDE RECEIVING PLUMBED OR SPRAYED INSULATION COOLER WALL PANEL
- ⊖ FREEZER WALL PANEL
- (C) DENOTES DOOR NUMBER SEE SCHEDULE ON A-2
- ⊗ DENOTES WINDOW TYPES SEE SHEET A-2
- ▨ FIBER GLASS BATT INSULATION
- ▩ FIRE-RATED WALL WITH MINIMUM RATING TIME AS INDICATED



Order Plans