

MAINTENANCE:
 INSPECT SKIMMER SEDIMENT BASINS AT LEAST WEEKLY AND AFTER EACH SIGNIFICANT (ONE-HALF INCH OR GREATER) RAINFALL EVENT AND REPAIR IMMEDIATELY. REMOVE SEDIMENT AND RESTORE BASIN TO ITS ORIGINAL DIMENSIONS WHEN SEDIMENT ACCUMULATES TO ONE-HALF THE HEIGHT OF THE FIRST BAFFLE. PULL THE SKIMMER TO ONE SIDE SO THAT THE SKIMMER UNDERNEATH IT CAN BE EXCAVATED. EXCAVATE THE SEDIMENT FROM THE ENTIRE BASIN, NOT JUST AROUND THE SKIMMER OR THE FIRST BAFFLE. MARK THE VEGETATION GROWING IN THE BOTTOM OF THE BASIN DOES NOT HOLD DOWN THE SKIMMER.

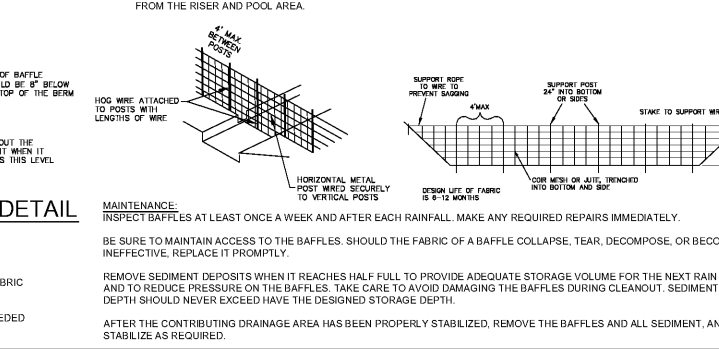
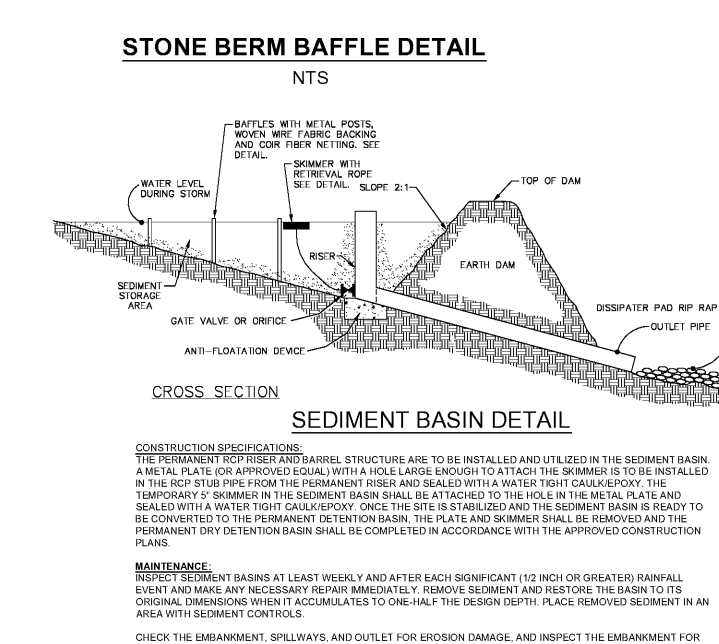
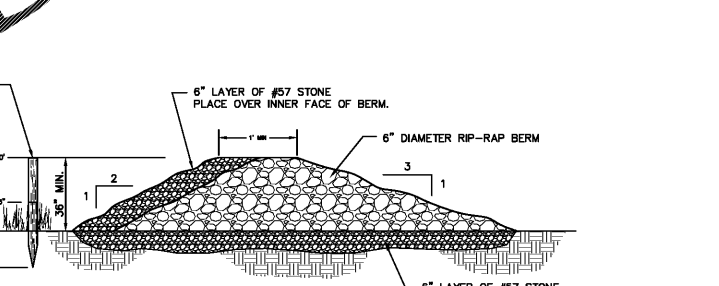
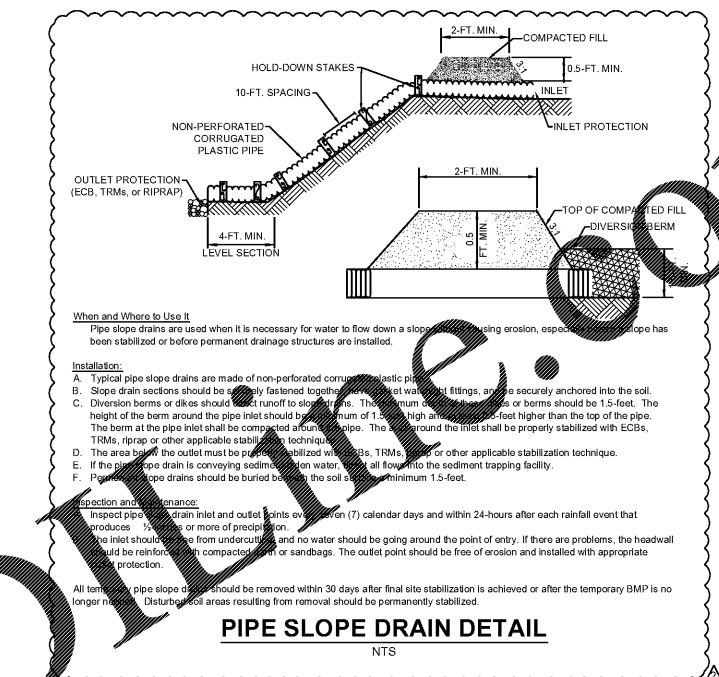
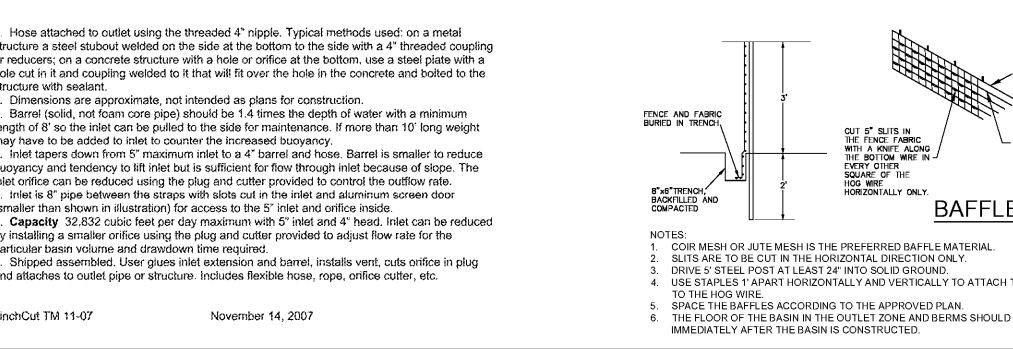
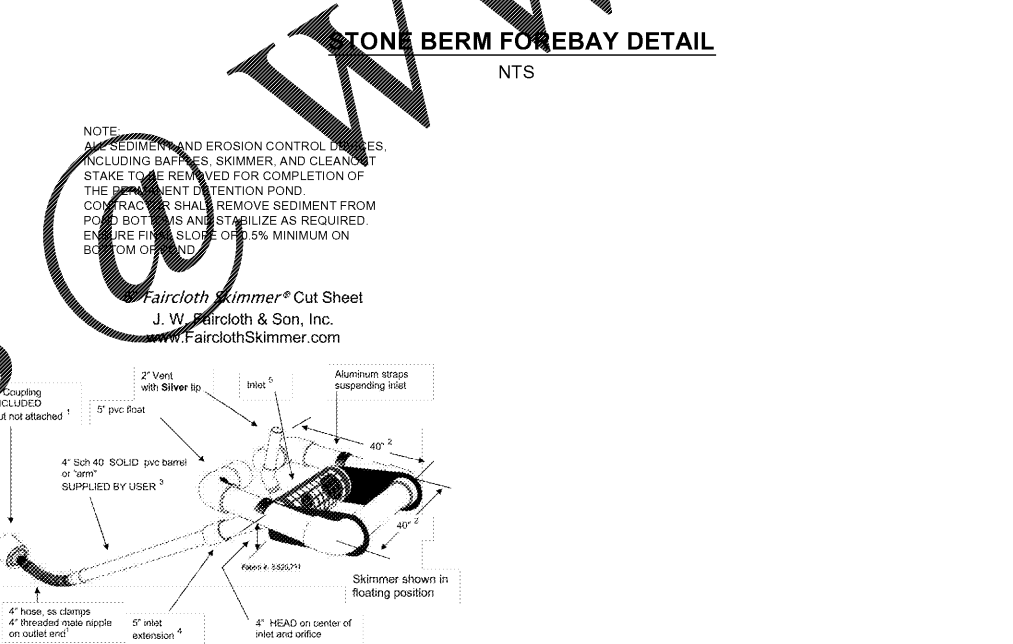
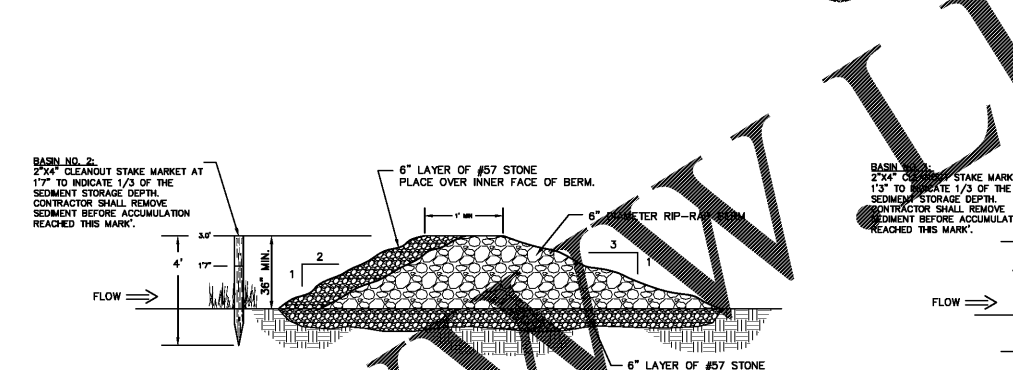
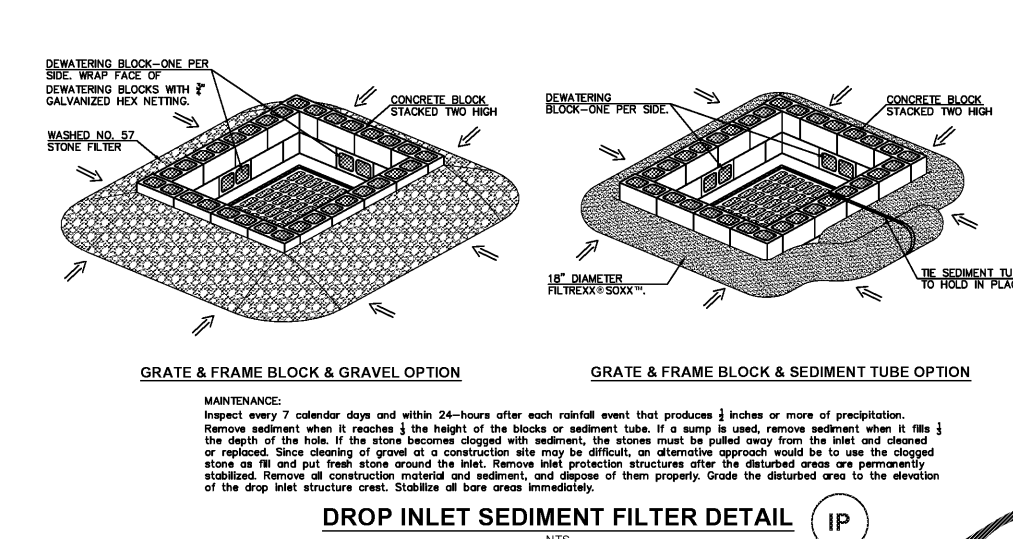
REPAIR THE BAFFLES IF THEY ARE DAMAGED. RE-ANCHOR THE BAFFLES IF WATER IS FLOWING UNDERNEATH OR AROUND THEM.

IF THE SKIMMER IS CLOGGED WITH TRASH AND THERE IS WATER IN THE BASIN, USUALLY JERKING ON THE ROPE WILL MAKE THE SKIMMER BOB UP AND DOWN AND DISLODGE THE DEBRIS AND RESTORE FLOW. IF THIS DOES NOT WORK, PULL THE SKIMMER OVER TO THE SIDE OF THE BASIN AND REMOVE THE DEBRIS. ALSO CHECK THE ORIFICE INSIDE THE SKIMMER TO SEE IF IT IS CLOGGED. IF SO REMOVE THE DEBRIS.

IF THE SKIMMER ARM OR BARRAGE PIPE IS CLOGGED, THE ORIFICE CAN BE REMOVED AND THE OBSTRUCTION CLEARED WITH A PLUMBER'S SNAKE OR BY FLUSHING WITH WATER. BE SURE AND REPLACE THE ORIFICE BEFORE REPOSITIONING THE SKIMMER.

CHECK THE FABRIC AND SPILLWAY FOR DAMAGE AND MAKE ANY REQUIRED REPAIRS WITH FABRIC THAT SPANS THE FULL WIDTH OF THE SPILLWAY. CHECK THE EMBANKMENT FOR PIPING SETTLEMENT. MAKE ALL NECESSARY REPAIRS IMMEDIATELY. REMOVE ALL TRASH AND OTHER DEBRIS FROM THE SKIMMER AND POOL AREAS.

FREEZING WEATHER CAN RESULT IN ICE FORMING IN THE BASIN. SOME SPECIAL PRECAUTIONS SHOULD BE TAKEN IN THE WINTER TO PREVENT THE SKIMMER FROM PLUGGING WITH ICE.



COX AND DINKINS
 ENGINEERS & SURVEYORS
 COX AND DINKINS, INC.
 803-254-0518
 803-765-0993
 Fax: 803-765-0993
 Email: cdinc@coxanddinkins.com

REGISTERED PROFESSIONAL ENGINEER
 NO. 14890

CERTIFICATE OF AUTHORIZATION
 COX AND DINKINS, INC.
 NO. C00294

CERTIFICATE OF AUTHORIZATION SEAL

NO.	DATE	DESCRIPTION
1	3/22/2017	Revised to add additional sheets
2	4/19/2017	Revised Per Public & Utility company comments
3	7/7/2017	Revised Water and Sanitary Server
4	8/6/2017	Revised building footprint
5	8/11/2017	Bid Set

DEVELOPER:
 Mr. Tom Murray
 WindCrest Development Group
 605 East Robinson St. Suite 340
 Orlando, Florida 32751
 (P) 407.219.3540
 (F) 407.219.3541
 tmurray@WINDCREST.COM

PROJECT:
Publix
 South Lake Drive & Platt Springs Road
 LOCATED NEAR RED BANK
 LEXINGTON COUNTY, SOUTH CAROLINA

BID SET
 TMS 007600-02-005, 006, 013, 084, 095, 116
 BOOK N/A SF NO. 245-19A
 PROJECT NO. 1920 SHEET NO. C29
 DATE 3/15/2017 30 of 48