

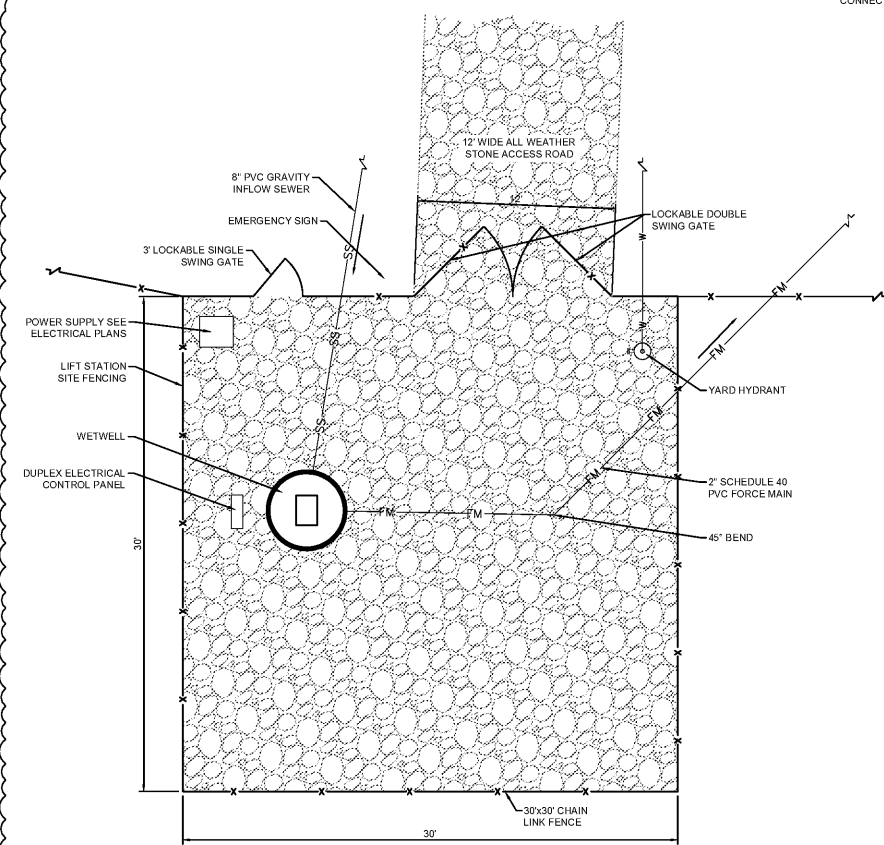
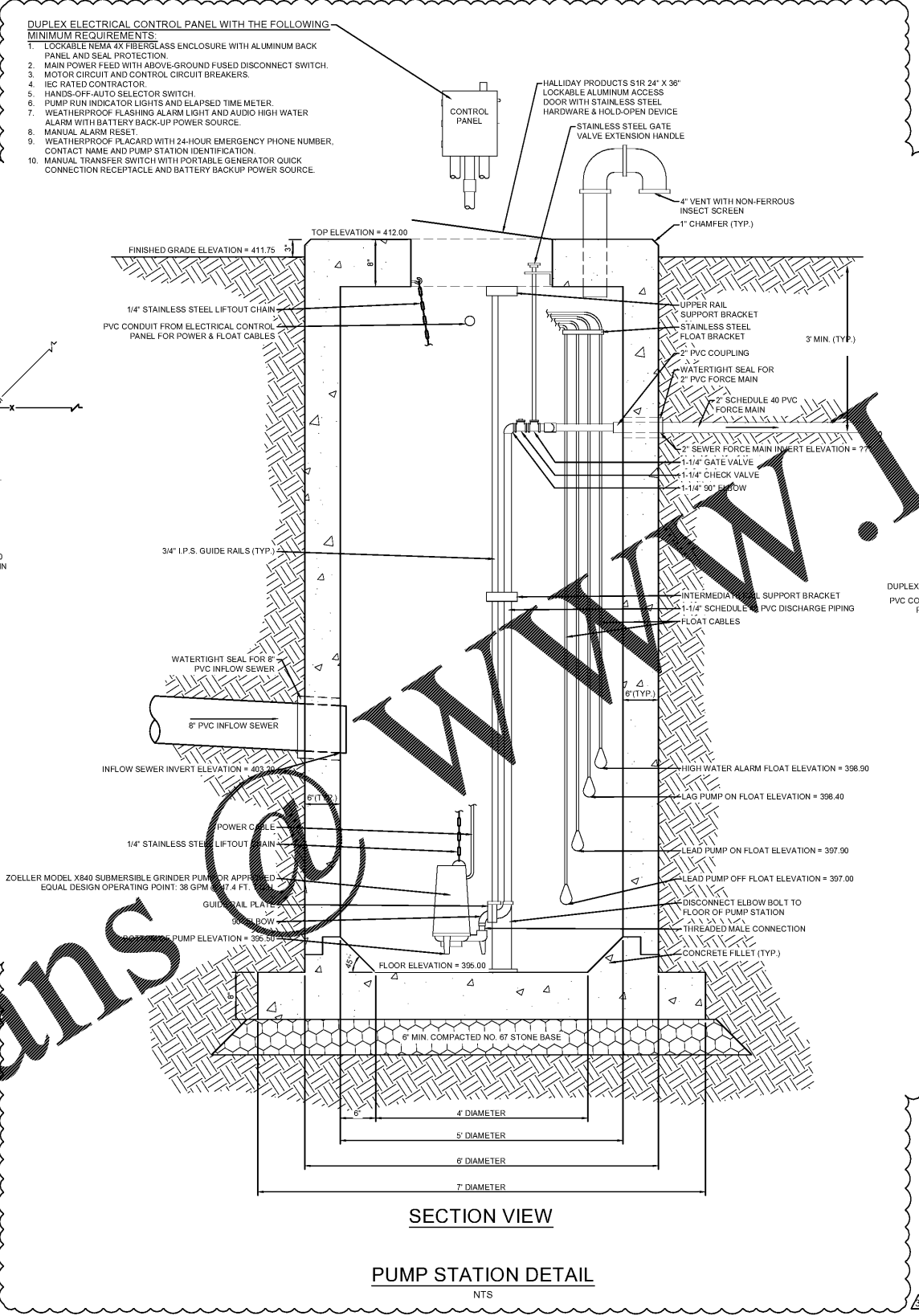
CERTIFICATE OF AUTHORIZATION SEAL

NO.	DATE	DESCRIPTION
1	3/22/2017	Revised to add additional sheets
2	4/19/2017	Revised Per Public & Utility company comments
3	7/7/2017	Revised Water and Sanitary Sewer
4	8/6/2017	Revised building footprint
5	9/11/2017	Bid Set

DEVELOPER:
 Mr. Tom Murray
 WindCrest Development Group
 605 East Robinson St. Suite 340
 Orlando, Florida 32751
 (P) 407.219.3540
 (F) 407.219.3541
 tmurray@WINDCREST.COM

BID SET
Publix
 South Lake Drive & Platt Springs Road
 LOCATED NEAR RED BANK
 LEXINGTON COUNTY, SOUTH CAROLINA
DETAILS

TMS 007600-02-005, 006, 013, 084, 095, 116	SF No. 245-19A
BOOK N/A	SHEET NO. C26
PROJECT NO. 1920	DATE 3/15/2017
27 of 48	



PUMP STATION SITE NOTES:

1. PUMP STATION SITE SHALL BE GRADED TO PROMOTE POSITIVE DRAINAGE AWAY FROM THE WET WELL AND OTHER STRUCTURES.
2. A PERMANENT SIGN SHALL BE PLACED CONTAINING THE CONTACT INFORMATION NECESSARY IN CASE OF ANY EMERGENCIES. THE SIGN SHALL BE READILY VISIBLE.

PUMP STATION NOTES:

1. 90 MINUTES OF EXCESS STORAGE TO MEET PUBLIC REQUIREMENTS IS ACCOMMODATED IN THIS DESIGN.
2. SEWER PUMP STATION SHALL MEET THE REQUIREMENTS OF 15A NCAC 021 .0305.
3. PUMP STATION ELECTRICAL CONTROL PANEL SHALL BE SUPPLIED WITH A SEPARATE ELECTRICAL SERVICE FROM TRANSFORMER.
4. THE PUMP POWER CABLES AND FLOAT CABLES SHALL BE RUN THROUGH PVC CONDUIT FROM THE PUMP STATION TO THE ELECTRICAL CONTROL PANEL. ELECTRICAL CONTRACTOR SHALL DETERMINE SIZE OF CONDUIT REQUIRED.
5. PUMP STATION ELECTRICAL CONTROL PANEL SHALL BE PROVIDED WITH A PERMANENT WEATHERPROOF FLAGCARD LISTING THE 24-HOUR EMERGENCY CONTACT PERSON, PHONE NUMBER AND PUMP STATION IDENTIFICATION NUMBER.
6. FOR PUMP STATION RELIABILITY, THE ELECTRICAL CONTROL PANEL SHALL INCLUDE A HIGH WATER AUDIO AND VISUAL ALARM IN ACCORDANCE WITH 15A NCAC 021 .035 (H)(1)(P).
7. ALL PORTS OF ENTRY INTO THE PUMP STATION AND ELECTRICAL CONTROL PANEL SHALL BE PADLOCKED.
8. PUMP STATION ELECTRICAL CONTROL PANEL SHALL INCLUDE A MANUAL TRANSFER SWITCH FOR CONNECTION OF AN EMERGENCY POWER GENERATOR IN CASE OF PRIMARY POWER SOURCE FAILURE IN ACCORDANCE WITH 15A NCAC 021 .0305 (H)(1)(C). ELECTRICAL CONTRACTOR SHALL DETERMINE SIZE AND TYPE OF POWER GENERATOR AND MANUAL TRANSFER SWITCH REQUIRED BY THE ELECTRICAL SPECIFICATIONS OF THE PUMPS SELECTED.
9. PUMP STATION SHALL BE TESTED FOR WATERTIGHTNESS IN ACCORDANCE WITH SCDHEC STANDARDS. THE WATER TIGHTNESS TEST SHALL BE COMPLETED SEPARATELY AND INDEPENDENTLY OF THE SEWER FORCE MAIN LEAKAGE TEST. THE ENGINEER SHALL BE PRESENT DURING TESTING.
10. FOLLOWING INSTALLATION, NEW PUMPS SHALL BE SUBJECTED TO A DRAWDOWN TEST TO CONFIRM THE PUMPS ARE OPERATING AT OR NEAR THE REQUIRED DESIGN OPERATION POINT IN ACCORDANCE WITH SCDHEC STANDARDS. DRAWDOWN TEST FOR THE NEW PUMPS SHALL BE CONDUCTED USING BOTH THE PRIMARY POWER SOURCE AND THE EMERGENCY POWER GENERATOR PROVIDED TEMPORARILY BY THE CONTRACTOR. THE ENGINEER SHALL BE PRESENT DURING TESTING.
11. SEE SEWER MAIN SPECIFICATIONS FOR ADDITIONAL DETAILS.

Order Plans @ WWW.LDOnline.com