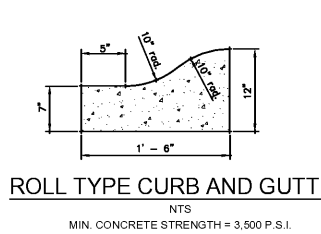
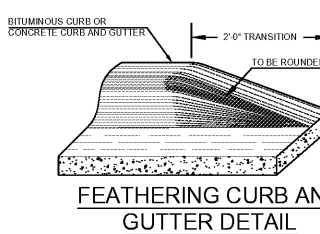


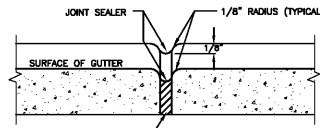
"L" TYPE CURB AND GUTTER
NTS
MIN. CONCRETE STRENGTH = 3,500 P.S.I.



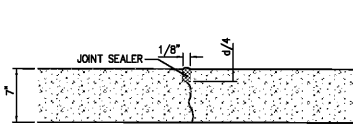
ROLL TYPE CURB AND GUTTER
NTS
MIN. CONCRETE STRENGTH = 3,500 P.S.I.



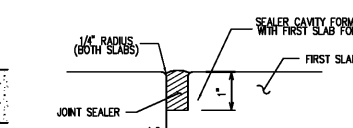
FEATHERING CURB AND GUTTER DETAIL
NTS



TRANSVERSE EXPANSION JOINT



SAWED CONTROL JOINT
N.T.S.

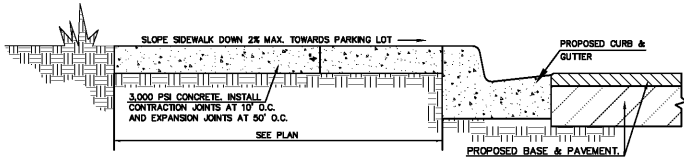


CONSTRUCTION JOINT (AT END OF THE DAYS WORK)
N.T.S.

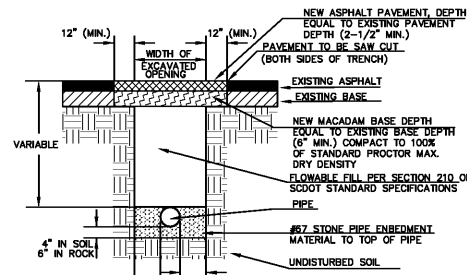
NOTES:

- CONTRACTION JOINTS SHALL BE SPACED AT 10-FOOT INTERVALS. JOINT SPACING MAY BE ALTERED BY THE ENGINEER TO PREVENT UNCONTROLLED CRACKING.
- CONTRACTION JOINTS MAY BE INSTALLED BY THE USE OF TEMPLATES OR FORMED BY OTHER APPROVED METHODS. WHERE SUCH JOINTS ARE NOT FORMED BY TEMPLATES, A MINIMUM DEPTH OF 1 1/2" SHALL BE OBTAINED.
- ALL EXPANSION JOINTS SHALL BE SPACED AT 50-FOOT INTERVALS, AND ADJACENT TO ALL RIGID OBJECTS. JOINTS SHALL MATCH LOCATIONS WITH JOINTS IN ADJUTING SIDEWALK.
- SEE CONCRETE PAVEMENT DETAILS FOR PAVEMENT THICKNESS AND COMPRESSIVE STRENGTH.

CONCRETE JOINT DETAILS

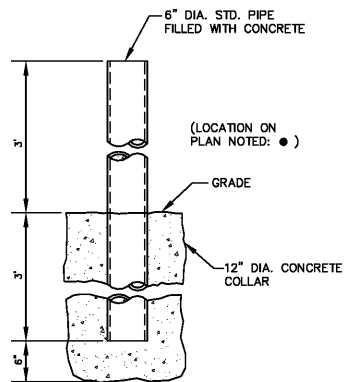


CONCRETE SIDEWALK DETAIL ALONG PARKING LOT
N.T.S.

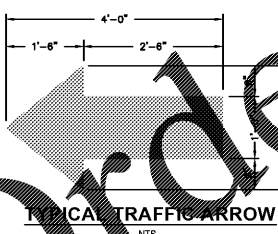


PAVEMENT REPAIR DETAIL
NOT TO SCALE

- NOTE**
- NATIONAL FIRE PROTECTION ASSOCIATION (NFPA) 24 2.5.5 REQUIRES THE PIPE BETWEEN THE CHECK VALVE AND THE OUTSIDE HOSE COUPLING SHALL BE EQUIPPED WITH AN APPROVED AUTOMATIC DRIP, ARRANGED TO DISCHARGE TO A PROPER PLACE.
 - NFPA 24 7-2 REQUIRES ALL FERROUS PIPE SHALL BE LINED.

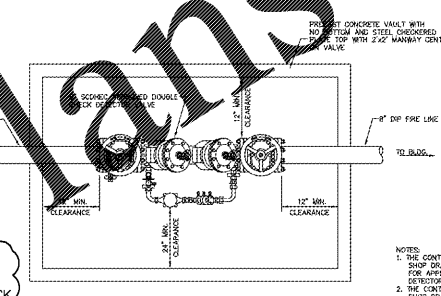


PIPE BOLLARD DETAIL
NOT TO SCALE

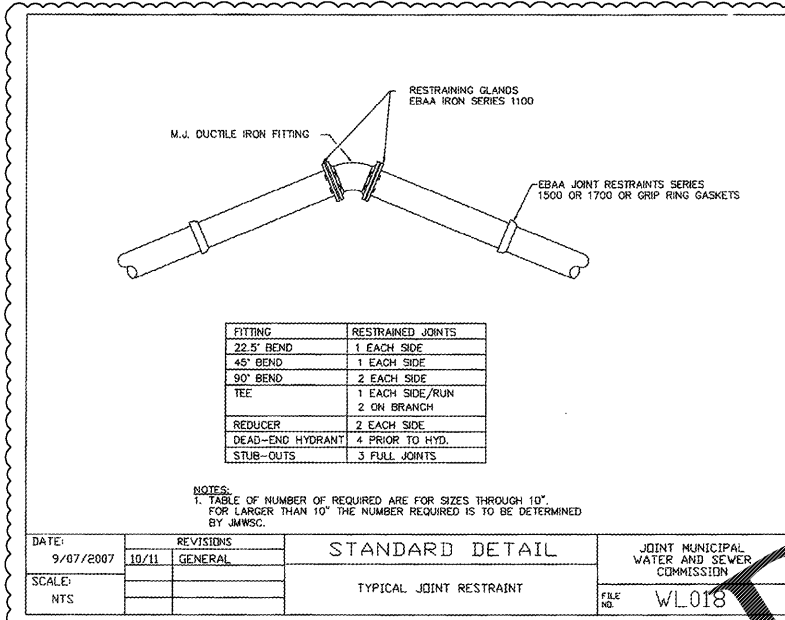


TYPICAL TRAFFIC ARROW
NTS

NOTE:
CONTRACTOR SHALL USE AMES SERIES 3000SS DOUBLE CHECK DETECTOR OR APPROVED EQUAL.
LOCATE ALL PIPING A MINIMUM OF 36" BELOW FINISHED GRADE - BELOW THE FROST LINE.



6" FIRE LINE VAULT DETAIL



FITTING	RESTRAINED JOINTS
22.5° BEND	1 EACH SIDE
45° BEND	1 EACH SIDE
90° BEND	2 EACH SIDE
TEE	1 EACH SIDE/RUN 2 ON BRANCH
REDUCER	2 EACH SIDE
DEAD-END HYDRANT	4 PRIOR TO HYD.
STUB-OUTS	3 FULL JOINTS

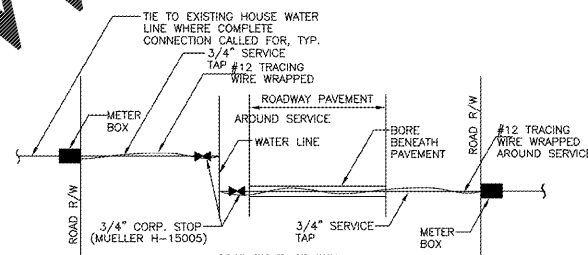
NOTES:
1. TABLE OF NUMBER OF REQUIRED ARE FOR SIZES THROUGH 10". FOR LARGER THAN 10" THE NUMBER REQUIRED IS TO BE DETERMINED BY JMWSC.

DATE:	REVISIONS:	STANDARD DETAIL	LENGTON COUNTY JOINT MUNICIPAL WATER AND SEWER COMMISSION
9/07/2007	10/11 GENERAL	TYPICAL JOINT RESTRAINT	FILE NO. WL018

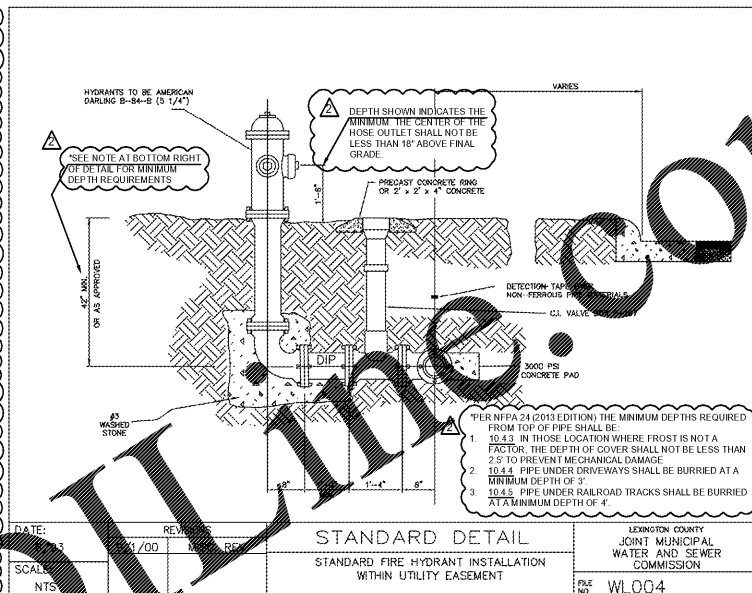
FLUSHING TABLE FOR FIRE SERVICE MAINS

PIPE SIZE (IN.)	FLOW RATE (GPM)
4	350
6	350
8	350
10	350
12	350
14	350
16	350
18	350
20	350
24	350
30	350
36	350
42	350
48	350
60	350
72	350
84	350
96	350
108	350
120	350

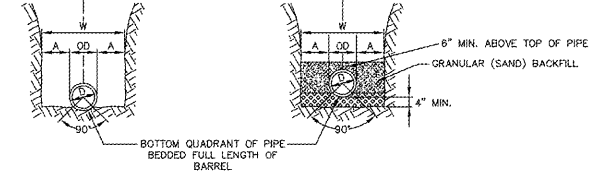
(FLOW REQUIRED TO PRODUCE VELOCITY OF 10 FT/SEC)



DATE:	REVISIONS:	STANDARD DETAIL	LENGTON COUNTY JOINT MUNICIPAL WATER AND SEWER COMMISSION
5/6/94	9/1/93 MISC. REVISIONS 6/7/00 MISC. REVISIONS	STANDARD 3/4" WATER METER CONNECTION	FILE NO. WL007

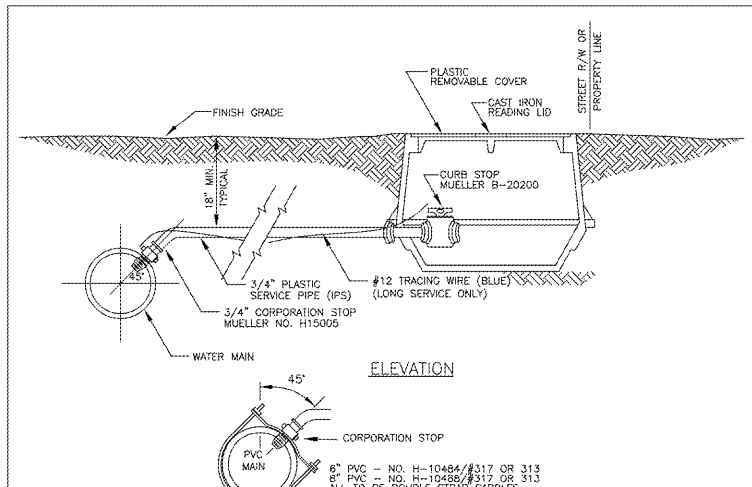


DATE:	REVISIONS:	STANDARD DETAIL	LENGTON COUNTY JOINT MUNICIPAL WATER AND SEWER COMMISSION
9/2005		STANDARD FIRE HYDRANT INSTALLATION WITHIN UTILITY EASEMENT	FILE NO. WL004



PIPE DIA. (IN.)	MAXIMUM "A" (IN.)
6" TO 15"	6"
16" TO 21"	10"
24" TO 30"	12"
33" TO 42"	15"
48" & LARGER	18"

DATE:	REVISIONS:	STANDARD DETAIL	LENGTON COUNTY JOINT MUNICIPAL WATER AND SEWER COMMISSION
9/2005		STANDARD PIPE TRENCH BEDDING DETAIL	FILE NO. WL017



DATE:	REVISIONS:	STANDARD DETAIL	LENGTON COUNTY JOINT MUNICIPAL WATER AND SEWER COMMISSION
7/1/93	9/1/97 ADDED TRACE WIRE	3/4" x 5/8" WATER TAP AND METER DETAILS	FILE NO. WL013

COX AND DINKINS
ENGINEERS & SURVEYORS
AND DINKINS, INC.
561 TULINE BLVD.
COLUMBIA, SC 29205
803-254-0518
Fax: 803-765-0993
Email: cdinc@coxanddinkins.com

SOUTH CAROLINA
REGISTERED PROFESSIONAL ENGINEER
NO. 14890
W. HOLMES
REGISTERED PROFESSIONAL ENGINEER
NO. 14890

SOUTH CAROLINA
CERTIFICATE OF AUTHORIZATION
COX AND DINKINS, INC.
NO. C00294

CERTIFICATE OF AUTHORIZATION SEAL

NO.	DATE	DESCRIPTION
1	3/22/2017	Revised to add additional sheets
2	4/19/2017	Revised Per Public & Utility company comments
3	7/7/2017	Revised Water and Sanitary Sewer
4	8/6/2017	Revised building footprint
5	9/1/2017	Bid Set

DEVELOPER:
Mr. Tom Murray
WindCrest Development Group
605 East Robinson St. Suite 340
Orlando, Florida 32751
(P) 407.219.3540
(F) 407.219.3541
tmurray@WINDCREST.COM

BID SET
Publix
South Lake Drive & Platt Springs Road
LOCATED NEAR RED BANK
LEXINGTON COUNTY, SOUTH CAROLINA
DETAILS

TMS	BOOK	SF NO.
007600-02-005, 006, 013, 084, 095, 116	N/A	245-19A
PROJECT NO.	SHEET NO.	
1920	C25	
DATE	26 of 48	
3/15/2017		

Order Plans

WWW.LDLINE.COM