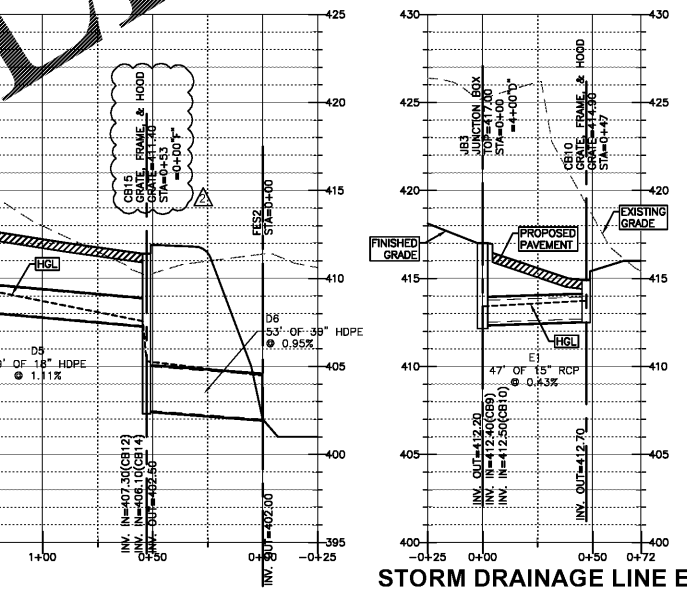
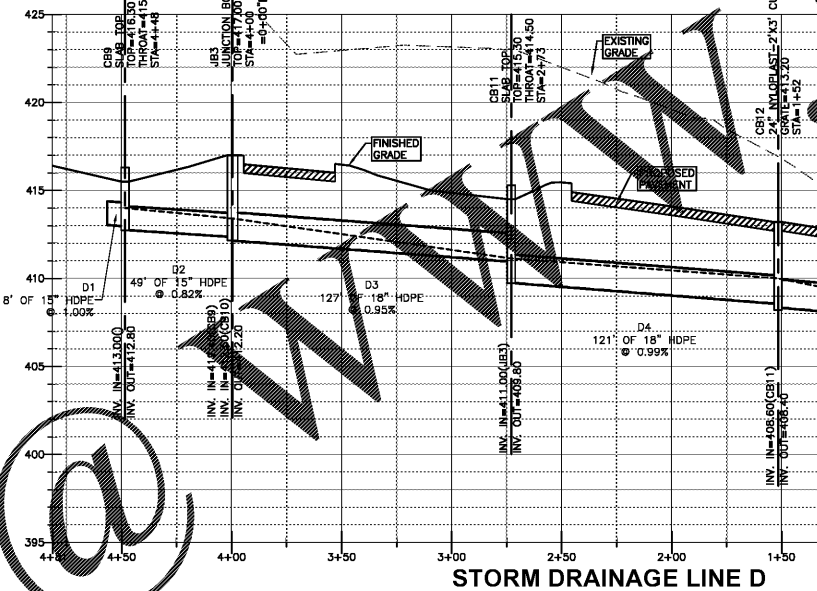
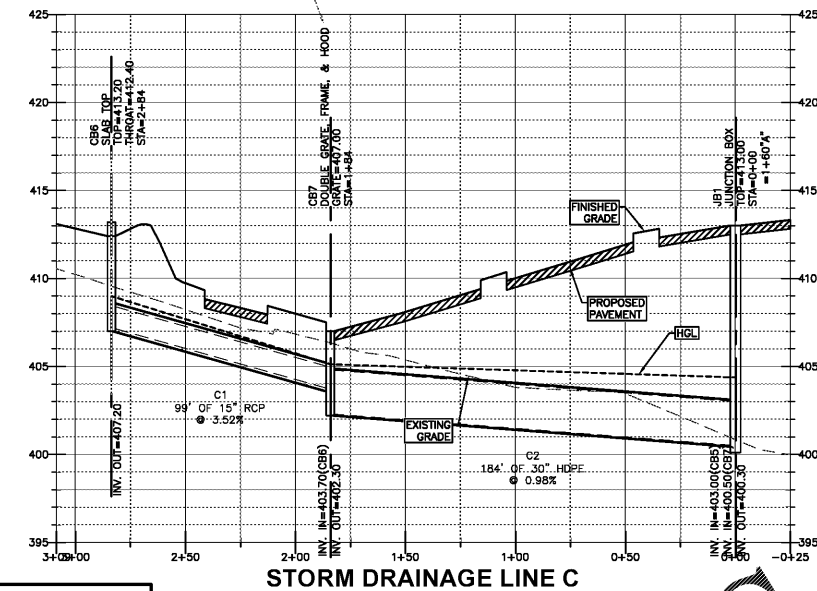
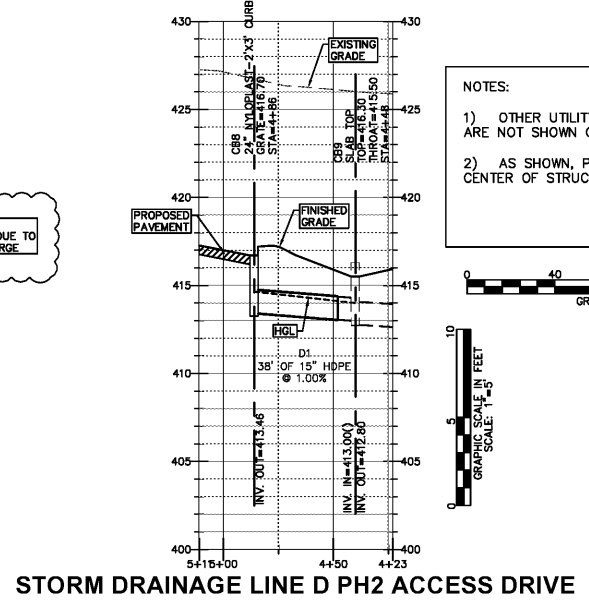
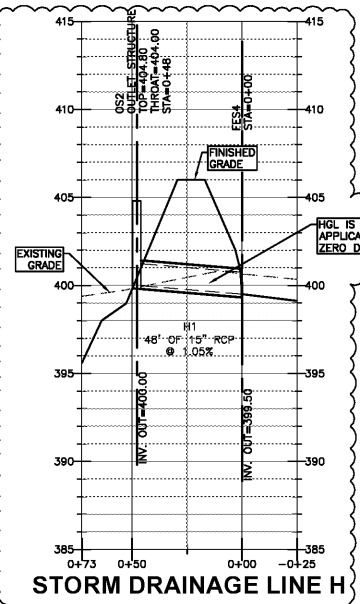
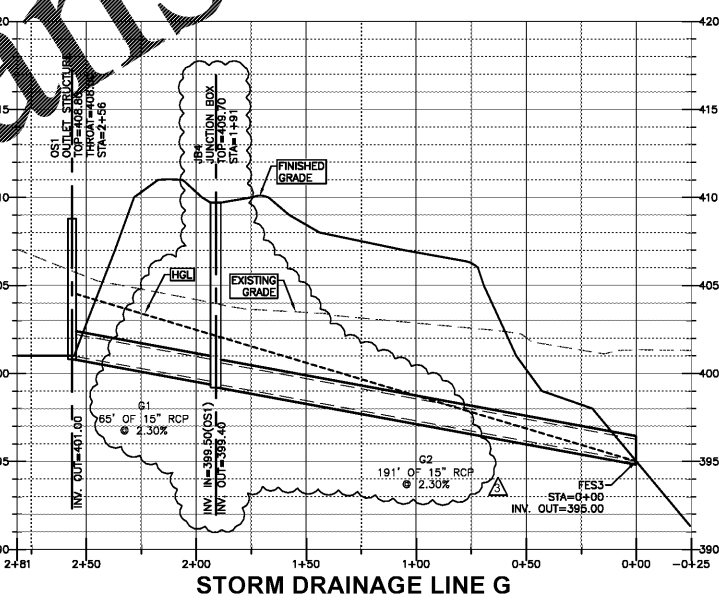
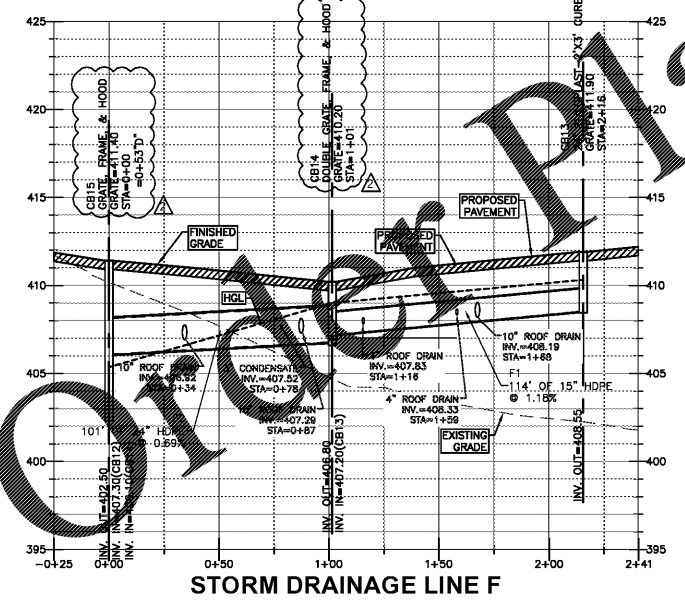


NOTE:
CATCH BASINS CB5, CB7, AND CB14 SHALL BE PRECAST AND SHALL BE SIZED TO ACCOMMODATE A DOUBLE GRATE, FRAME AND HOOD CURB INLET



NOTE:
CATCH BASINS CB5, CB7, AND CB14 SHALL BE PRECAST AND SHALL BE SIZED TO ACCOMMODATE A DOUBLE GRATE, FRAME AND HOOD CURB INLET



NOTES:
1) OTHER UTILITY CROSSINGS MAY EXIST THAT ARE NOT SHOWN ON THIS PROFILE.
2) AS SHOWN, PIPE LENGTHS ARE CENTER TO CENTER OF STRUCTURES.

GRAPHIC SCALE IN FEET
SCALE: 1"=40'

GRAPHIC SCALE IN FEET
SCALE: 1"=5'

COX AND DINKINS
ENGINEERS & SURVEYORS
AND DINKINS, INC.
851 TULINE BLVD.
COLUMBIA, SC 29205
803-254-0518
Fax: 803-765-0993
Email: cdinkins@coxanddinkins.com

SOUTH CAROLINA
REGISTERED PROFESSIONAL ENGINEER
NO. 14890
W. HOLCOMB
REGISTERED PROFESSIONAL ENGINEER
NO. 14899

SOUTH CAROLINA
CERTIFICATE OF AUTHORIZATION
COX AND DINKINS, INC.
No. C00294

CERTIFICATE OF AUTHORIZATION SEAL

NO.	DATE	DESCRIPTION
1	3/22/2017	Revised to add additional sheets
2	4/19/2017	Revised Per Public & Utility company comments
3	7/7/2017	Revised Water and Sanitary Sewer
4	8/6/2017	Revised building footprint
5	9/1/2017	Bid Set

DEVELOPER:
Mr. Tom Murray
WindCrest Development Group
605 East Robinson St, Suite 340
Orlando, Florida 32751
(P) 407.219.3540
(F) 407.219.3541
tmurray@WINDCREST.COM

BID SET

Publix
South Lake Drive & Platt Springs Road
LOCATED NEAR RED BANK
LEXINGTON COUNTY, SOUTH CAROLINA

STORM DRAINAGE PROFILES

TNS 02/7600-02-005, 006, 013, 084, 095, 116
BOOK N/A SF NO. 245-19A
PROJECT NO. 1920 SHEET NO. C22
DATE 3/15/2017 23 of 48

C:\Pro\1920 Publix Platt Springs\Drawings\1920 SWPPP.dwg, Plotted By: DLH, Plotted: Sep 01, 2017 11:14am