

NO.	DATE	DESCRIPTION
1	3/22/2017	Revised to add additional sheets
2	4/19/2017	Revised Per Public & Utility company comments
3	7/7/2017	Revised Water and Sanitary Sewer
4	8/6/2017	Revised building footprint
5	9/11/2017	Bid Set

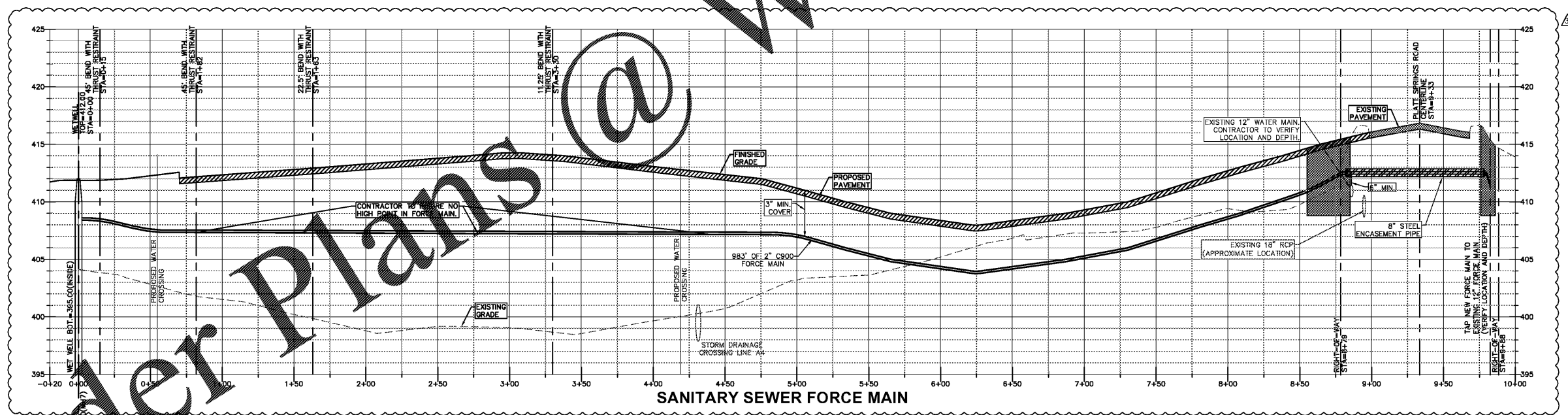
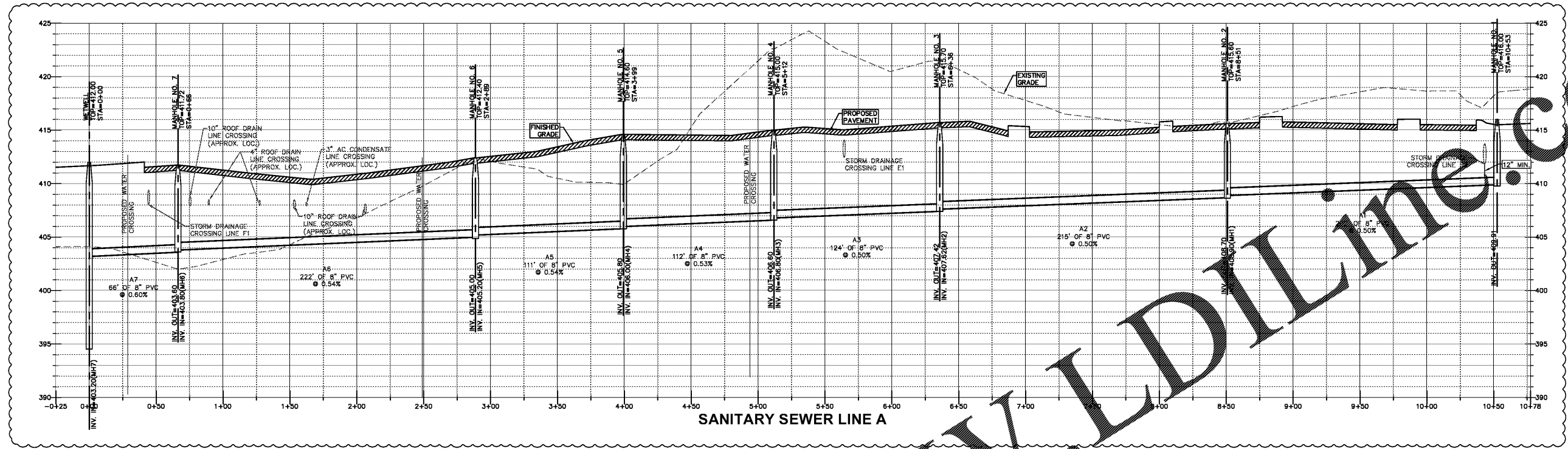
DEVELOPER:
 Mr. Tom Murray
 WindCrest Development Group
 605 East Robinson St. Suite 340
 Orlando, Florida 32751
 (P) 407.219.3540
 (F) 407.219.3541
 tmurray@WINDCREST.COM

BID SET

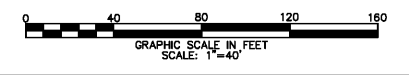
Publix
 South Lake Drive & Platt Springs Road
 LOCATED NEAR RED BANK
 LEXINGTON COUNTY, SOUTH CAROLINA

SANITARY SEWER PROFILES

PROJECT:
 TMS 007600-02-005, 006, 013, 084, 095, 116
 BOOK N/A SF NO. 245-19A
 PROJECT NO. 1920 SHEET NO. **C18**
 DATE 3/15/2017 19 of 48



NOTES:
 1) OTHER UTILITY CROSSINGS MAY EXIST THAT ARE NOT SHOWN ON THIS PROFILE.
 2) AS SHOWN, PIPE LENGTHS ARE CENTER TO CENTER OF STRUCTURES.



Order Plans @ WWW.LDLINE.COM