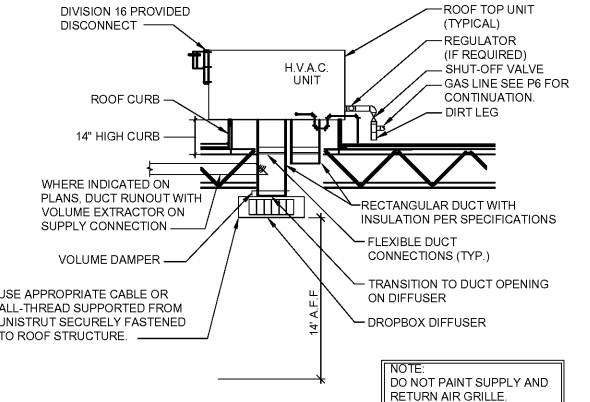
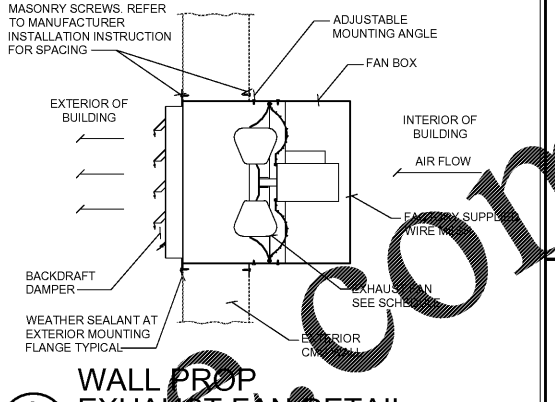


**1** M2 N.T.S. **GAS FIRED INFRA-RED STRAIGHT TUBE HEATER DETAIL** DETAIL BY MANUFACTURER FOR REFERENCE ONLY.



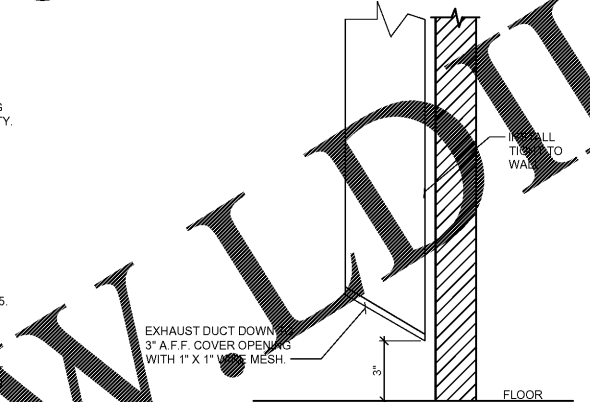
**2** M2 N.T.S. **RTU PACKAGE HVAC DETAIL**



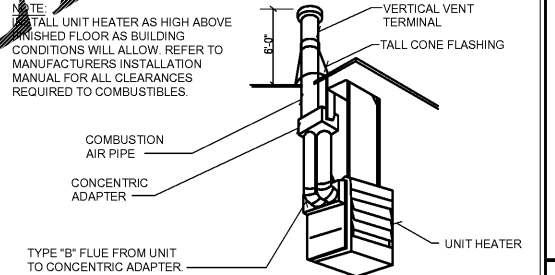
**3** M2 N.T.S. **WALL PROP EXHAUST FAN DETAIL**

**INFRARED HEATER NOTES**

1. INFRARED HEATERS SHALL BE FURNISHED INSTALLED BY CONTRACTOR. ALL NECESSARY MOUNTING HARDWARE INCLUDING BRACKETS AND WIRE HANGERS ARE CONTRACTOR RESPONSIBILITY.
2. THE HEATER IS SHIPPED PARTIALLY ASSEMBLED. FOLLOW MANUFACTURER'S INSTRUCTIONS TO CONNECT BODY PACKAGES AND CONTROL / EXHAUSTER ASSEMBLIES.
3. CHAIN SETS ARE REQUIRED AT THE POINTS SHOWN TO PROVIDE THE FLEXIBILITY NECESSARY TO ALLOW FOR HEATER EXPANSION CONTRACTION.
4. REFER TO MANUFACTURER'S INSTALLATION MANUAL FURNISHED WITH HEATER FOR ADDITIONAL DATA.
5. INSTALL HEATER AT HEIGHT SHOWN ON ARCHITECTURAL SHEET AS5. REFER TO MANUFACTURER'S INSTALLATION MANUAL FOR ALL CLEARANCES REQUIRED TO COMBUSTIBLES, BELOW AND ABOVE UNIT.
6. INSTALL FLUE ASSEMBLY TO CLEAR LIGHT FIXTURES, EQUIPMENT AND TO PENETRATE ROOF PAST THE RIDGE VENT. SEE ROOF PLAN.
7. CONTRACTOR SHALL ROTATE RADIANT HEATER TO A 30 DEG ANGLE PER MANUFACTURER'S INSTRUCTIONS.



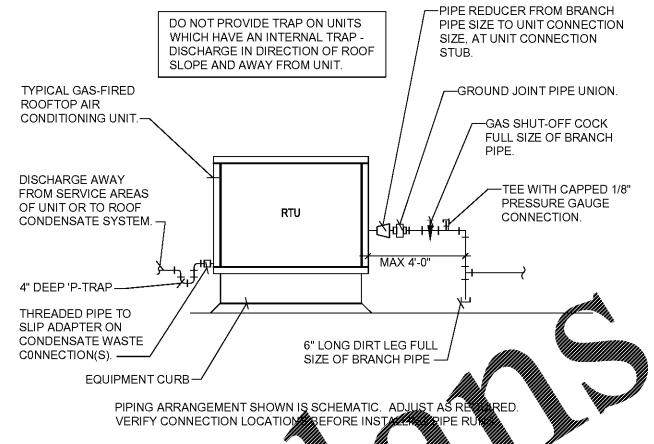
**4** M2 N.T.S. **SERVICE BAY EXHAUST DUCT DETAIL**



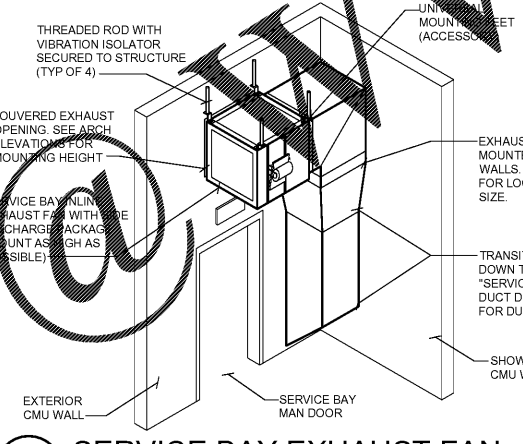
**5** M2 N.T.S. **UNIT HEATER CONCENTRIC FLUE DETAIL**

**GENERAL DETAIL NOTES**

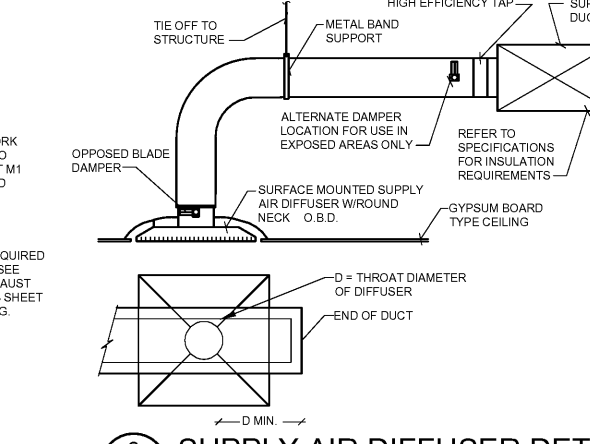
1. SUSPEND UNIT HEATER AND RADIANT TUBE HEATERS FROM UNISTRUT CHANNELS MOUNTED TO ROOF TRUSS WITH VIBRATION ISOLATORS EQUIPPED HANGER RODS OR AN APPROVED EQUAL METHOD.
2. ALL EQUIPMENT FURNISHED BY CONTRACTOR SHALL HAVE MAGNETIC STARTERS OF SIZE AND CAPACITIES AS REQ'D. FOR PROPER EQUIPMENT OPERATION. FURNISH WEATHERPROOF BOXES (NEMA 3R) FOR EXTERIOR USE.
3. EXTEND ALL METALBESTOS FLUES OF DIAMETERS SHOWN THROUGH ROOF TO HEIGHT REQUIRED BY CODE WITH ALUMINUM ROUND TOP. PROVIDE VENTILATING THIMBLE THROUGH ROOF FOR CLEARANCE AROUND STACK AND SUPPORT SECURELY. PROVIDE WEATHER TIGHT RAIN COLLAR AND FLASHING AT PENETRATION.
4. ALL THERMOSTATS TO BE FURNISHED BY HVAC CONTRACTOR TO ELECTRICAL CONTRACTOR FOR INSTALLATION.
5. FURNISH AND INSTALL UL RATED FIRE DAMPERS W/FUSIBLE LINKS AND ACCESS PANELS IN DUCT WORK AT PENETRATIONS OF FIRE RATE ASSEMBLIES AS REQUIRED BY CODE.
6. WIRING SCHEMATICS OF ALL HVAC EQUIPMENT SHALL BE FURNISHED BY HVAC CONTRACTOR TO ELECTRICAL CONTRACTOR.
7. ADJUST ALL FANS TO PROPER RPM TO ASSURE CFM REQUIRED AND BALANCE ALL GRILLES AND DIFFUSERS TO CFM SHOWN ON DRAWINGS. (±5%)
8. WHERE DRAWINGS AND SPECIFICATIONS EXCEED GOVERNING CODE REQUIREMENTS. DESIGN SHALL GOVERN. INSTALL NO WORK CONTRARY TO OR BELOW MINIMUM LEGAL STANDARDS. WHETHER DRAWINGS AND SPECIFICATIONS FULLY COMPLY OR NOT.
9. ROUTE ALL PIPING TIGHT TO CEILING AND WALLS, PARALLEL AND PERPENDICULAR TO BUILDING STRUCTURE WHERE POSSIBLE.
10. ALL SHUT OFF VALVES TO BE ACCESSIBLE TO ASSOCIATES WITHOUT THE USE OF A LADDER OR STEP-STOOL.



**6** M2 N.T.S. **ROOFTOP UNIT PIPING DETAIL**



**7** M2 N.T.S. **SERVICE BAY EXHAUST FAN**



**8** M2 N.T.S. **SUPPLY AIR DIFFUSER DETAIL**

Aug. 08, 2017 - 3:36pm - USER: ryan.mccrory@sbridgestone-firestone.com (Engineering) \V20255 BSR0 - Williamsburg, VA Sheets\M2 MECHANICAL DETAILS.dwg

**Order Plans**

Professional Engineer of Record  
 Randall Nelson, P. E.  
 148 West 95th Street  
 Lenexa, Kansas 66215  
 Phone 913 322 5150

**Firestone**  
 COMPLETE AUTO CARE

THE DRAWING IS THE PROPERTY OF BRIDGESTONE RETAIL OPERATIONS, LLC AND IS LOANED TO THE EXPRESS CONDITION THAT IT IS NOT TO BE USED IN ANY WAY WITHOUT THE WRITTEN PERMISSION OF BRIDGESTONE RETAIL OPERATIONS, LLC. THE ACCEPTANCE OF THIS DRAWING WILL BE CONSIDERED AS AN ACCEPTANCE OF THE FOREGOING CONDITIONS AND AS A WAIVER TO THE FOREGOING CONDITIONS AND AS A WAIVER TO THE FOREGOING CONDITIONS AND AS A WAIVER TO THE FOREGOING CONDITIONS.

**NEW FCAC STORE**  
 2015 - JUNE - ER - RIGHT  
 1900 RICHMOND ROAD  
 WILLIAMSBURG, VA

COMMONWEALTH OF VIRGINIA  
 RANDALL A. NELSON  
 No. 43229  
 08/08/17

ISSUE BLOCK	
PROPERTY NO.:	167739
6 DIGIT NO.:	785533
4 DIGIT NO.:	6868
AOR PROJECT NUMBER:	1655B14
TO PERMIT:	DATE: 08/10/17
TO BID:	DATE: TBD
DRAWN BY:	ZS,MJ,RC
CHECKED BY:	CF,AR
SHEET TITLE:	
MECHANICAL DETAILS	
SHEET NUMBER:	
<b>M2</b>	