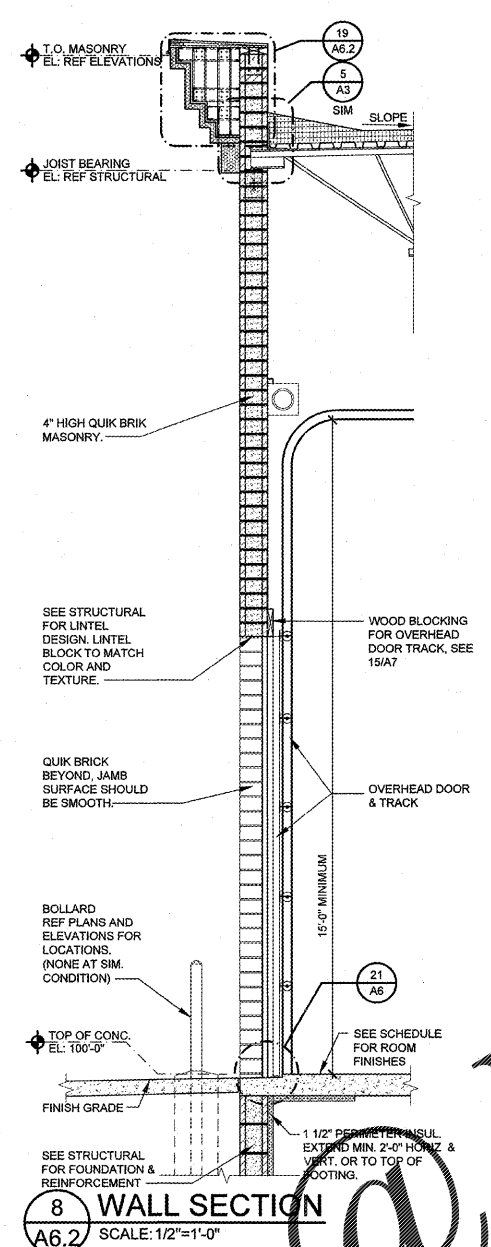
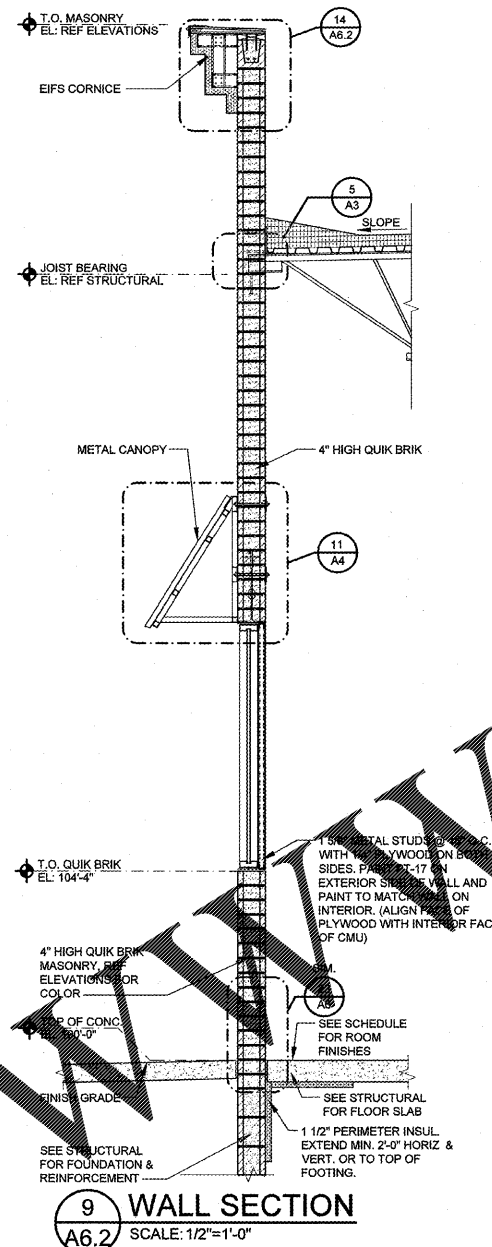


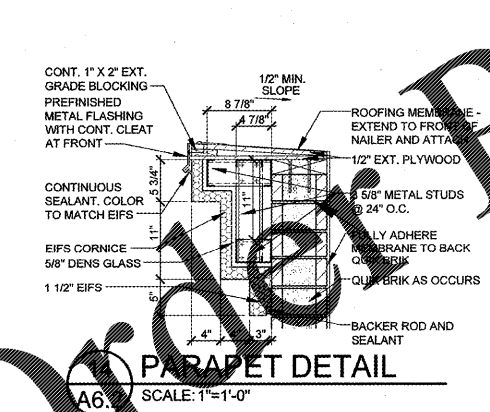
7 WALL SECTION
A6.2 SCALE: 1/2"=1'-0"



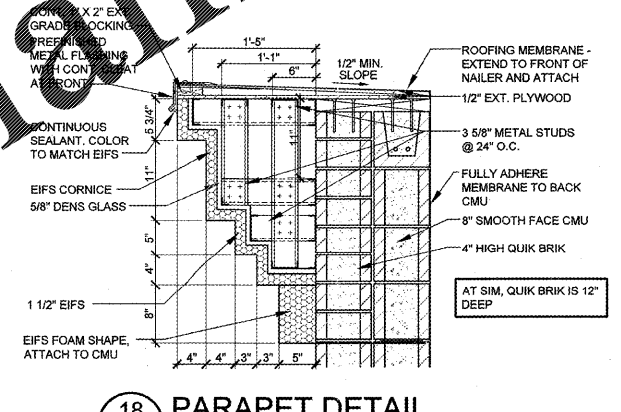
8 WALL SECTION
A6.2 SCALE: 1/2"=1'-0"



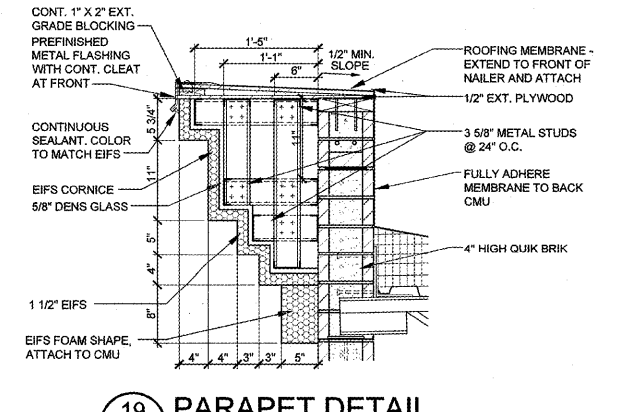
9 WALL SECTION
A6.2 SCALE: 1/2"=1'-0"



16 PARAPET DETAIL
A6.2 SCALE: 1"=1'-0"



18 PARAPET DETAIL
A6.2 SCALE: 1"=1'-0"



19 PARAPET DETAIL
A6.2 SCALE: 1"=1'-0"

Order Plans @ www.LDILine.com

Aug 09, 2017 - 4:39pm - USBR: k46
 P:\35561\Projects\Williamsburg\VA - 200905\12_F043_IP-A002.dwg

SGS Design Group, P.C.
 1400 South Boulder, Suite 500
 Tulsa, Oklahoma 74119-3009
 P: 918.567.8000
 F: 918.567.8001
 www.sgsgroup.com

Firestone
COMPLETE AUTO CARE

THIS DRAWING IS THE PROPERTY OF PROGRESSIVE RETAIL OPERATIONS, LLC AND IS LOANED TO THE EXPRESS CONSENT OF PROGRESSIVE RETAIL OPERATIONS, LLC. IT IS NOT TO BE USED IN ANY MANNER THAT IS DELETTERIOUS TO THE INTERESTS OF PROGRESSIVE RETAIL OPERATIONS, LLC. THE ACCEPTANCE OF THIS DRAWING WILL BE CONSIDERED AS AN ACCEPTANCE OF THE FOREGOING CONDITIONS AND AS ASSUMPTION OF THE OBLIGATIONS OF THE DRAWING BY PROGRESSIVE RETAIL OPERATIONS, LLC.

NEW FCAC STORE
 2015 - JUNE - ER - RIGHT
 1900 RICHMOND ROAD
 WILLIAMSBURG, VA

COMMONWEALTH OF VIRGINIA
 DOUG TAYRIEN
 Lic. No. 0401014936
 ARCHITECT
 8/10/17

ISSUE BLOCK

PROPERTY NO.: 167739
 6 DIGIT NO.: 785533
 4 DIGIT NO.: 6888
 AOR PROJECT NUMBER: 1655B14
 TO PERMIT: DATE: 08/10/17
 TO BID: DATE: TBD
 DRAWN BY: JD
 CHECKED BY: MGC

SHEET TITLE:
WALL SECTIONS AND DETAILS
 SHEET NUMBER:
A6.2