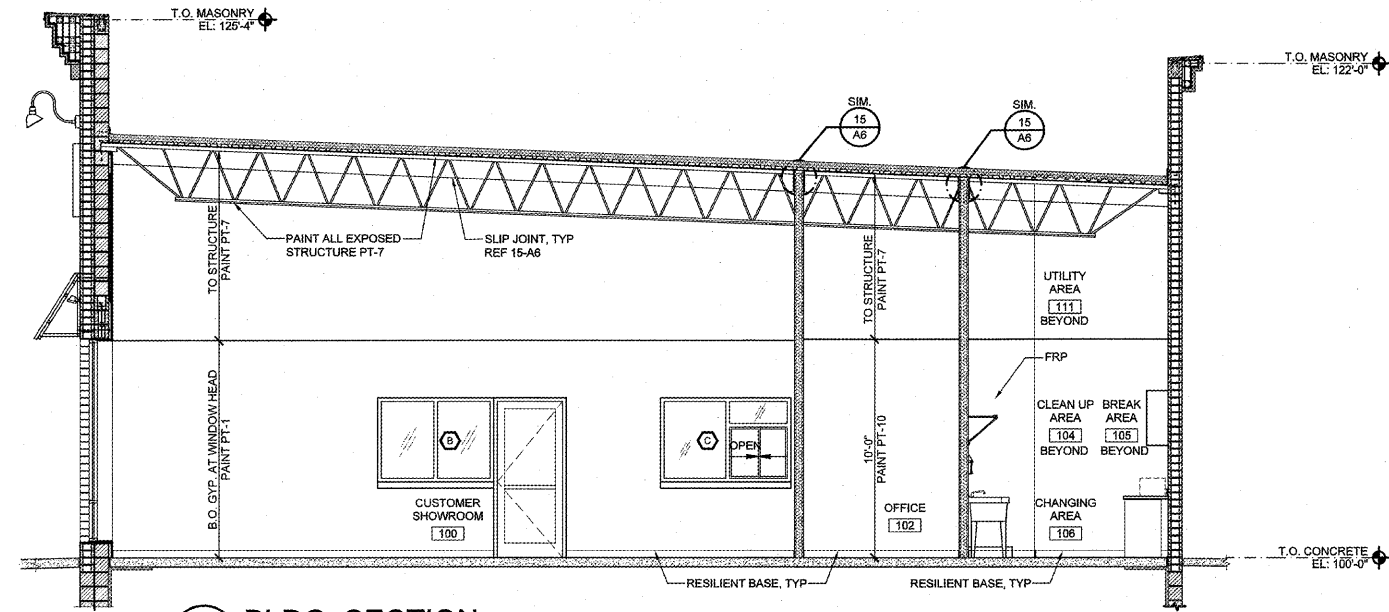
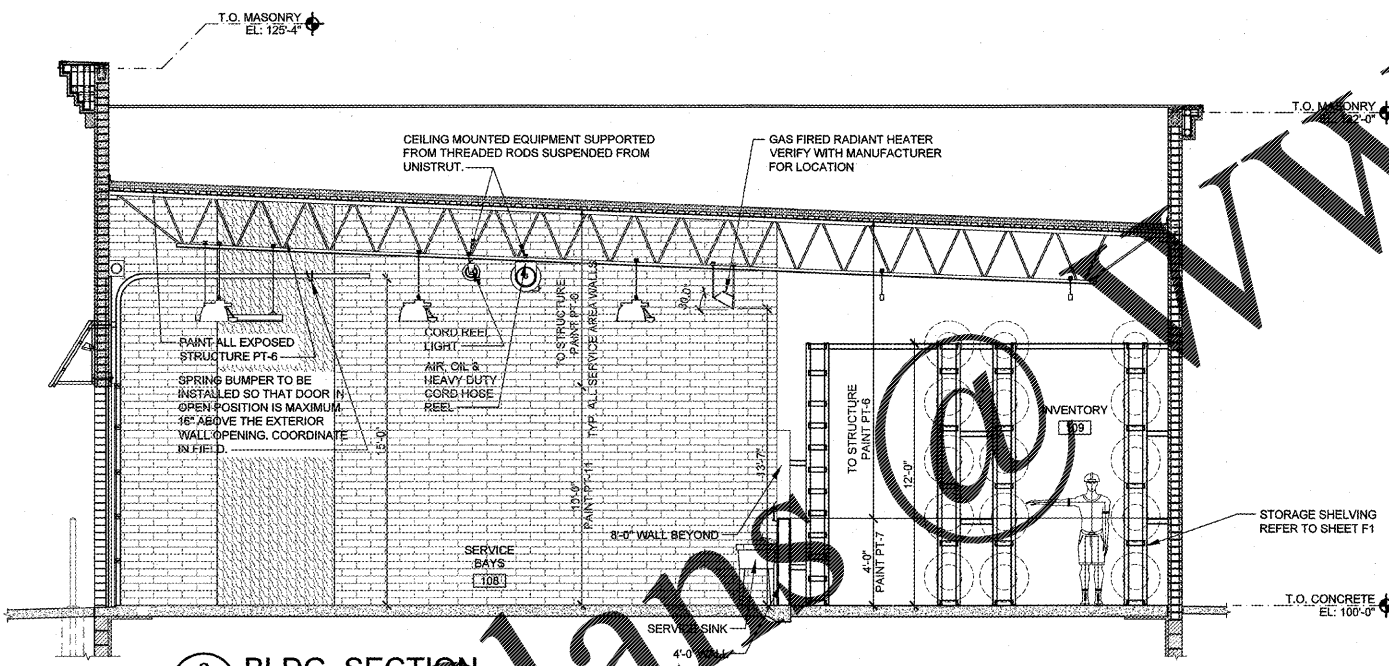


Aug 09, 2017 - 5:48pm - 35EP.rvt
 P:\SSO\Fred\Williamsburg\New FCAC\FCAC.dwg
 P:\SSO\Fred\Williamsburg\New FCAC\FCAC.dwg
 P:\SSO\Fred\Williamsburg\New FCAC\FCAC.dwg

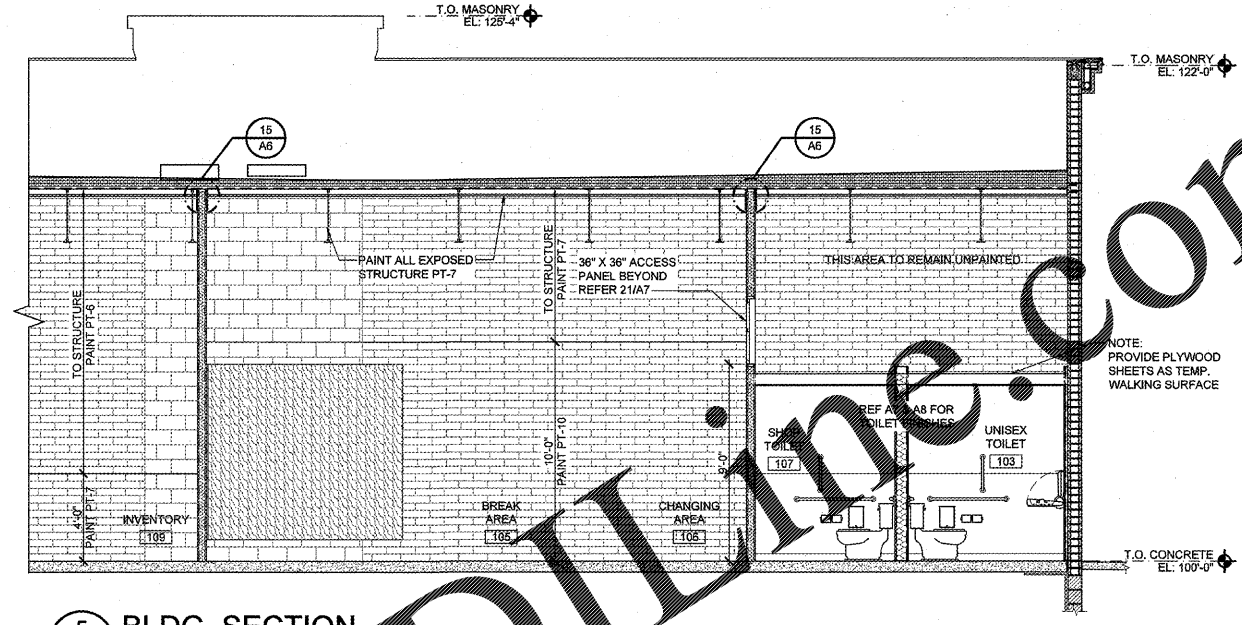
Order Plans



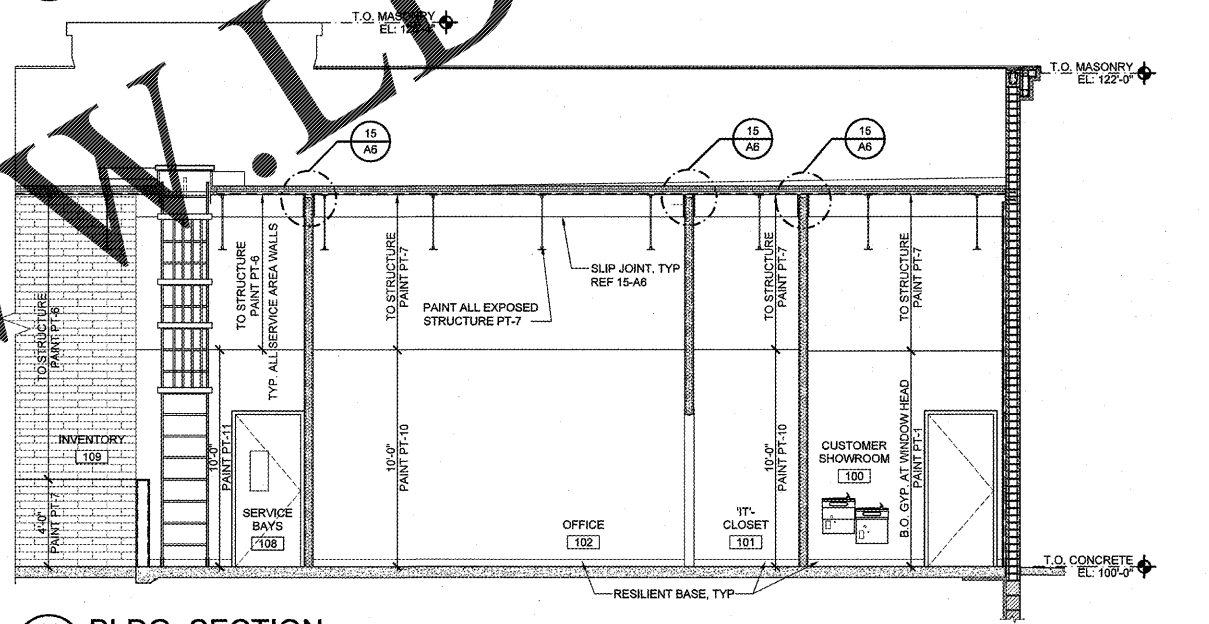
1 BLDG. SECTION
 A5 SCALE: 1/4"=1'-0"



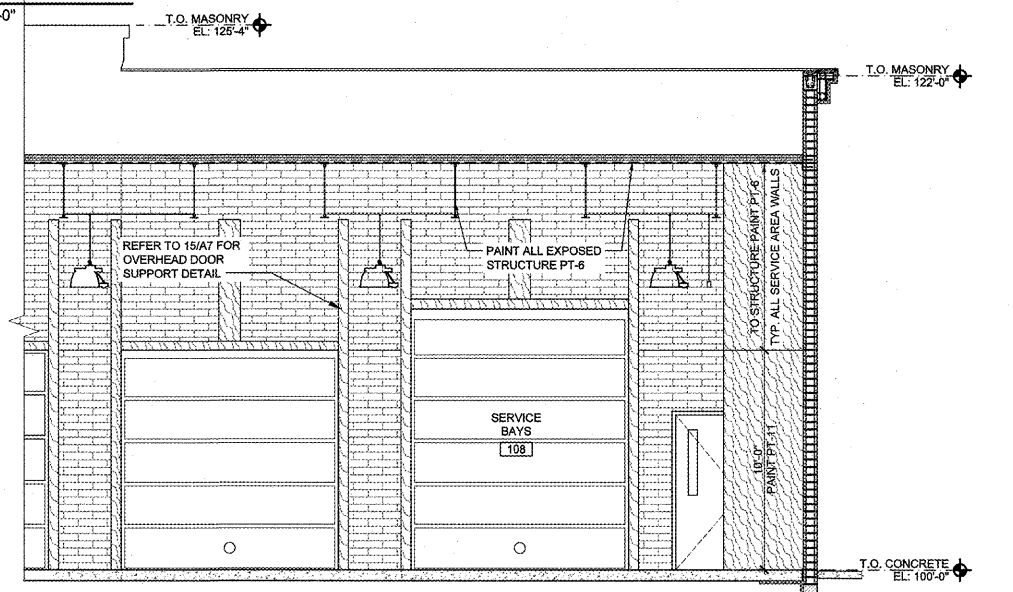
6 BLDG. SECTION
 A5 SCALE: 1/4"=1'-0"



5 BLDG. SECTION
 A5 SCALE: 1/4"=1'-0"



10 BLDG. SECTION
 A5 SCALE: 1/4"=1'-0"



15 BLDG. SECTION
 A5 SCALE: 1/4"=1'-0"

MECHANICAL NOTE:
 SEE MECHANICAL, PLUMBING, AND ELECTRICAL DRAWINGS FOR DUCT WORK, PIPING, LIGHT FIXTURES, ETC.
 SEE FIXTURE PLAN, REFLECTED CEILING, AND ELECTRICAL PLANS FOR ALL DIMENSIONS.
 VERIFY LOCATIONS WITH M.E.P. SHEETS.
 VERIFY LOCATIONS WITH EQUIPMENT MANUFACTURERS.
INSULATION NOTE:
 PROVIDE FOAMED IN PLACE INSULATION IN ALL EXTERIOR MASONRY WALLS. (R-7.5 MIN.)
 PROVIDE PERIMETER FOUNDATION/SLAB INSULATION, EXTEND 24" HORIZ. AND 24" VERT. OR TO TOP OF FOOTINGS. (R-10 MIN.)

SGS Design Group, P.C.
 1400 Boulder, Suite 550
 Tulsa, Oklahoma 74119-3609
 P: 918.587.8600
 F: 918.587.8601
 www.sgsdesigngroup.com

Firestone
 COMPLETE AUTO CARE

THIS DRAWING IS THE PROPERTY OF PROGRESSIVE RETAIL OPERATIONS, LLC AND IS LOANED TO THE INTERESTS OF PROGRESSIVE RETAIL OPERATIONS, LLC. IT IS NOT TO BE USED IN ANY MANNER DEVIATING FROM THE INTERESTS OF PROGRESSIVE RETAIL OPERATIONS, LLC. THE ACCEPTANCE OF THIS DRAWING SHALL BE CONSIDERED AS AN ACCEPTANCE OF THE FOREGOING CONDITIONS AND AS A WARRANTY TO THE EXCLUSIVE CONTRACTORS NAMED IN THIS DRAWING BY PROGRESSIVE RETAIL OPERATIONS, LLC.

NEW FCAC STORE
 2015 - JUNE - ER - RIGHT
 1900 RICHMOND ROAD
 WILLIAMSBURG, VA

COMMONWEALTH OF VIRGINIA
 DOUG TRYBEN
 Lic. No. 0401014956
 8/10/17

ISSUE BLOCK	
PROPERTY NO.:	167739
6 DIGIT NO.:	785633
4 DIGIT NO.:	8868
AOR PROJECT NUMBER:	1655B14
TO PERMIT:	DATE: 08/10/17
TO BID:	DATE: TBD
DRAWN BY:	JD
CHECKED BY:	MGC
SHEET TITLE:	
BUILDING SECTIONS AND DETAILS	
SHEET NUMBER:	
A5	