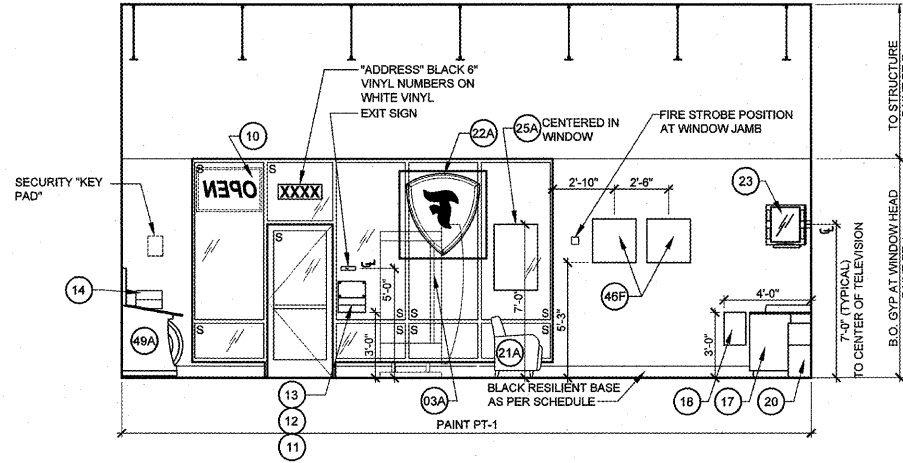
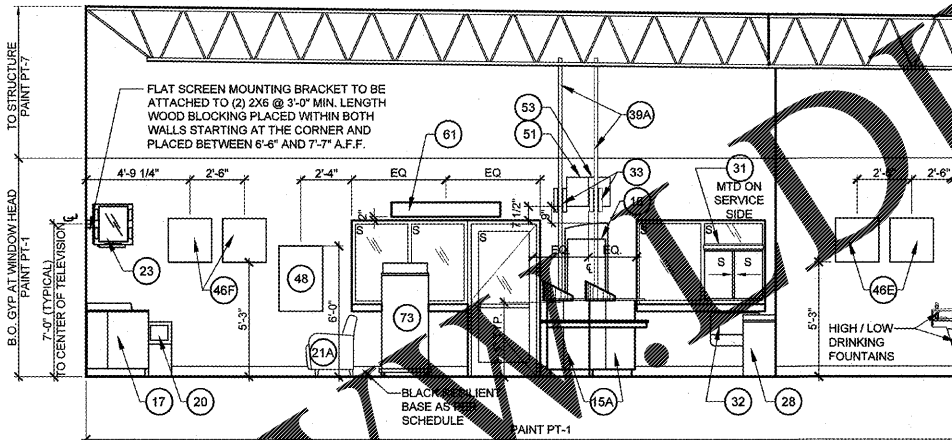


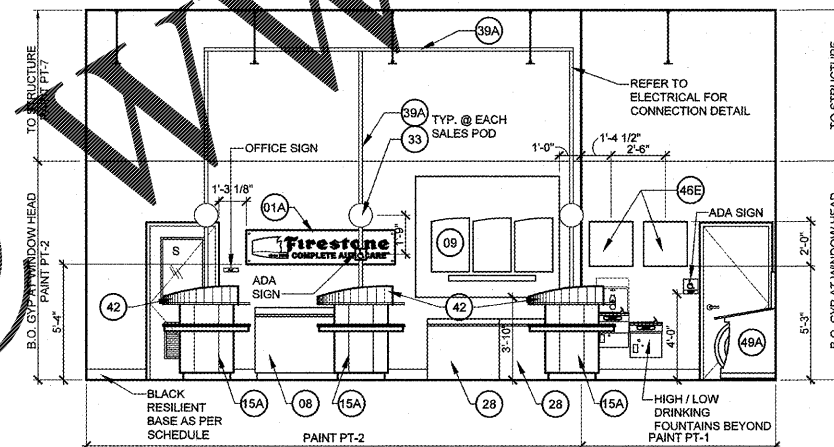
11 ENLARGED SHOWROOM FIXTURE PLAN
F2 SCALE: 1/4"=1'-0"



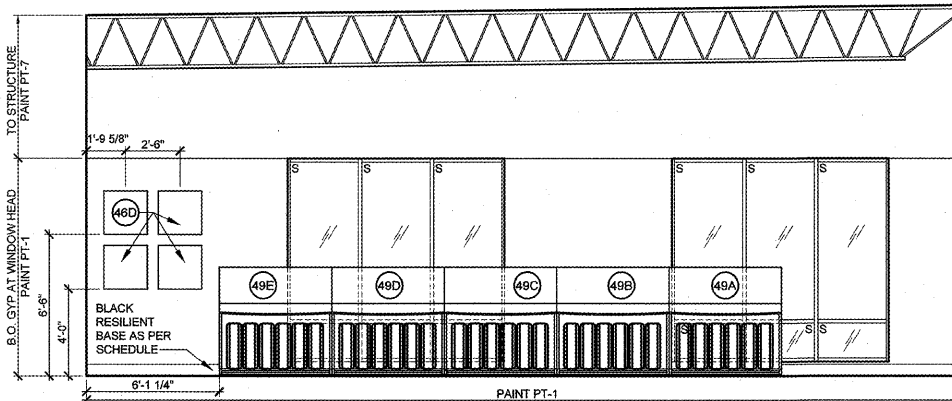
ELEVATION "A"



ELEVATION "B"



ELEVATION "C"

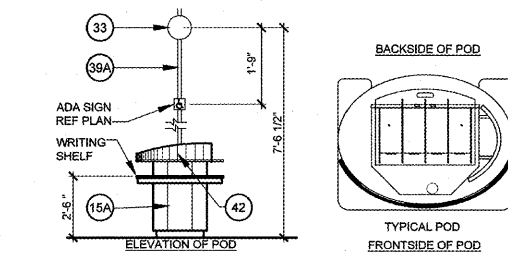


ELEVATION "D"

13 INTERIOR ELEVATIONS
F2 SCALE: 1/4"=1'-0"

DISPLAY FIXTURES & ACCESSORY KEY:
 FURNISHED BY BSRO U.N.O., INSTALLED BY GENERAL CONTRACTOR U.N.O.

#	QTY	DESCRIPTION
01A	1	BRAND WALL 82" X 18"
03A	1	MRT SINGLE UNIT
08	1	HUB, PLACE 1 1/2" FROM WALL, RUN CABLES THROUGH HOLE PROVIDED. DO NOT CUT CABINET.
09	1	MENU BOARD
10	1	OPEN SIGN (ELECTRICAL)
11	1	STORE HOURS SIGN GRAPHIC
12	1	CREDIT CARD/ ASE/ FLEETCARE/ MAP GRAPHIC
13	1	ASE/ FLEETCARE
14	1	KEY DROP BOX, SEE DETAIL 16A/7
15A	3	CUSTOMER SERVICE POD
16	1	ASE BOARD
17	1	SMALL COFFEE STAND - (COFFEE DISPENSER TO BE LOCATED ON COFFEE STAND, COFFEE MAKER TO BE LOCATED OUTSIDE SALES AREA. LOCATION TO BE DETERMINED BY STORE MANAGER.)
18	1	MAGAZINE WALL RACK
19A	3	TRASH CAN (18) GARBAGE
20	2	TRASH CAN (18) GARBAGE
21A	5	BASE CHAIR WITH AERATOR "CHARCOAL GRAY"
22A	1	WINDOW DIMENSIONAL F SHIELD (48" X 48")
23	1	ELECTRIC FLAT SCREEN W/ DVD & WALL RACK
24	1	MANAGER CHAIR
25A	1	WINDOW POSTER/PROMOTIONAL POSTER
26	1	MANAGER'S DESK 5'-0"
27	1	END TABLE 15" X 15"
28	2	COUNTER TOPS FOR NEW LATERAL FILE CABINETS (3'-0" EACH)
29	2	CLEANING SUPPLY RACK (3'-0" EACH)
31	1	OVERFLOW BAR
32	1	JOB ENVELOPE WALL BOX 27"W X 6"D
33	3	POD DISK GRAPHICS MTD @ 7'-6 1/2" TO CENTER
35A	3	FLOOR MATS/3'-0" X 4'-0"
35B	2	FLOOR MATS/3'-0" X 6'-6"
35C	1	FLOOR MATS/3'-0" X 8'-0" (SHOP WALK OFF MAT)
37	3	COAT RACK
38	1	WALL MTD SERVER RACK, OWNER INSTALLED
39A	3	POWER POLE DETAIL, SEE ELECTRICAL
41	1	ABOVE GROUND SAFE
42	3	SERVICE POD SHIELD/ GRAPHIC
43	1	CARPET TILES
44	1	EXTERIOR WALL MOUNTED SMOKER STATION, MOUNT 48" TO TOP
45	1	EXTERIOR TRASH CONTAINER
46D	1	SERIES GRAPHICS
46E	1	SERIES GRAPHICS
46F	1	SERIES GRAPHICS
48	1	MARKETING GRAPHIC (24"W X 36"H)
49A	1	TIRE BAY FLOOR UNIT/PASSENGER CARS & VANS
49B	1	TIRE BAY FLOOR UNIT/TOURING PERFORMANCE
49C	1	TIRE BAY FLOOR UNIT/ LIGHT TRUCK & SUV/ HIGHWAY
49D	1	TIRE BAY FLOOR UNIT/LIGHT TRUCK & SUV/ALL TERRAIN
49E	1	TIRE BAY FLOOR UNIT/UHP MAXIMUM PERFORMANCE
50	1	SPECIAL ORDER & PENDING BIN
51	1	HOURLY RATE SIGN
52	1	SAFETY GRAPHIC 24" X 36" MOUNTED 4'-7" A.F.F. ON DOOR
53	1	RECYCLING SIGN
54	2	PAPER TOWEL DISPENSER (ROLL)
55	1	GOVERNMENT POSTER
56	1	OSHA POSTER
57	2	FOUR DRAWER VERTICAL FILING CABINETS
58	1	WALL MOUNTED FRAME (CERTIFICATE OF OCCUPANCY)
59	1	WALL MOUNTED FRAME (BUSINESS LICENSE)
60	1	SOILED GARMENT CABINET
61	1	SERVICE BAY WINDOW HEADER
62	2	HAND SOAP DISPENSER
63	2	HAND GREASE CLEANER DISPENSER
64	1	COMPACT REFRIGERATOR
65	1	MICROWAVE
68	1	TEAM INFO CENTER (37"W X 78"H) 32" A.F.F.
71	1	NEW CHASSIS DISPLAY
73	1	TIRE/WMPER COMBO FLOOR DISPLAY
84	1	MOBILE COAT RACK



15 SALES POD PLAN VIEW
F2 SCALE: 1/2"=1'-0"

SSG Design Group, P.C.
 1400 N. Boulder, Suite 550
 Tulsa, Oklahoma 74119-3809
 P: 918.587.5600
 F: 918.587.5601
 www.ssgdesigngroup.com

Firestone COMPLETE AUTO CARE

THIS DRAWING IS THE PROPERTY OF BRIDGESTONE RETAIL OPERATIONS, LLC AND IS LOANED ON THE OPERATIONS OF BRIDGESTONE RETAIL OPERATIONS, LLC. THAT IT IS NOT TO BE USED IN ANY MANNER WITHOUT THE WRITTEN PERMISSION OF BRIDGESTONE RETAIL OPERATIONS, LLC. THE PERMISSION TO THE EXCLUSIVE CONTRACTOR SHALL BE LIMITED TO THE USUALLY BRIDGESTONE RETAIL OPERATIONS, LLC.

NEW FCAC STORE
 2015 - JUNE - ER - RIGHT
 1900 RICHMOND ROAD
 WILLIAMSBURG, VA

COMMONWEALTH OF VIRGINIA
 DOUG TAYRIEN
 Lic. No. 0401014956

PROPERTY NO.: 167739
 6 DIGIT NO.: 785533
 4 DIGIT NO.: 6868

AOR PROJECT NUMBER: 1655B14
 TO PERMIT: DATE: 08/10/17
 TO BID: DATE: TBD
 DRAWN BY: JD
 CHECKED BY: MGC

SHEET TITLE:
**SHOWROOM
 FIXTURE PLAN
 & ELEVATIONS**

SHEET NUMBER:
F2